

# COLOPHON

$$\text{distance} = \text{reading} \times \cos^2 L$$

$$\begin{aligned} \text{altitude} &= \text{reading} \times \cos^2 L \tan L \\ &= \text{reading} \times \sin L \cos L \end{aligned} \left. \vphantom{\begin{aligned} \text{altitude} \\ &= \text{reading} \times \sin L \cos L \end{aligned}} \right\} \text{minus height of pole}$$

Index pp. 149 - 155

Index pp. 149 - 155

M. 1011.

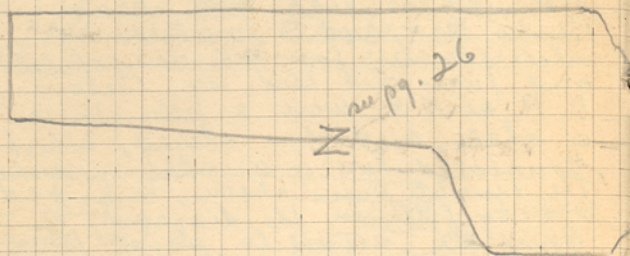
Apr. 12, 1932. The moving of the heavy equipment of the expedition was made difficult at the customs house in Smyrna because it was sent with a bill of lading (as freight). In spite of the orders from the "Approria" to have the goods go through free, there were many officials to see, and a whole morning was wasted at the customs house alone. Even in convenient baggage, if in any way possible should be brought with the passengers and entered through the small customs house as personal baggage. With an order for free entry of baggage, this is quite easy. At the large customs house one must be accompanied by a man who understands Turkish.

Carts and carriages in Smyrna are found at the Customs House landing. Another large carriage stand is behind the Grand Hotel Splendid Palace. For moving heavy luggage across the paved shore front, a duty is charged by the French company which surfs the pavement (officers opposite the large customs house).

There are two carts for transport in Dersimdere, two in Davelibuy and about 20 in Malkadjik.

Banjans is the less disagreeable and more reliable of the two cart owners of Davelibuy. Those in Dersimdere, who speak only Turkish, are apparently reliable. A Turk named Doumouss at Malkadjik controls about 12 carts and is very high priced. I found one Greek, Avaboulos, easier to deal with especially if his patriotism as being a Greek was appealed to.

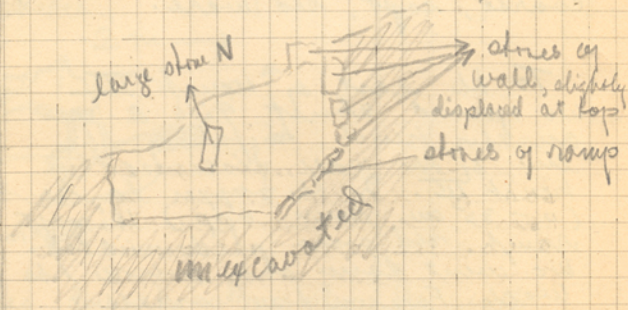
The following is a



Shaded stones barely show on surface of the ground, along line of wall. They do not however appear to be in situ. The block marked M in the design above we removed just to the east of it.

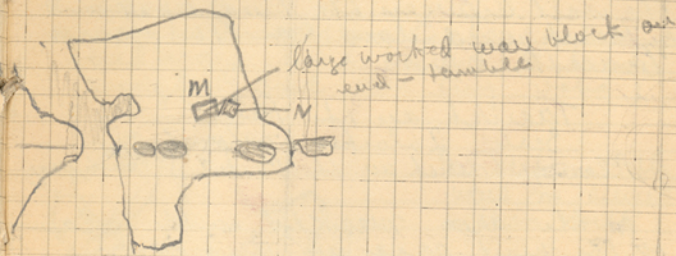
In digging from M and N to what appeared to be a ramp, inclined bottom of the wall.

Cross section of trench



sketch of the combined trench.

Scale - 2 squares = 1 meter



surface of the ground, along line of wall. They do not however appear to be in situ. The block marked M in the design above we removed just to the east of it. Another (marked N above) appeared

the line of the wall, we ran across at an angle of  $45^\circ$  to support the

- looking from west to east.

During the afternoon we laid bare a larger section of the ramp and began clearing away the soil between the two sections of the trench

12 April 25 - Tuesday

In charge of Trench III and Trench on Hill Point

In Trench III we cleared away the soil between the two sections of trench and laid bare the scarp beneath.

Trench on the Point

Scale 2 blocks = 1 meter. (See next page)  
Plan of Trench on the Point

In the area marked on the plan on the next page we dug down through rather hard, somewhat clay-like soil with fragments of rough-red pottery and tile in it. A wall 60 cm. wide separated the two regions of work.

At a depth of 19-23 cm in the section marked A in the diagram we struck a layer of burnt material. The soil was very black and full of carbon. Some small sticks of wood were found as charcoal.



life size

The black carboniferous soil was close to the wall at the depth of 23 cm. extending out only 50 cm. to the east.

In digging down in section B a wall appeared as shown in the sketch - labeled m.

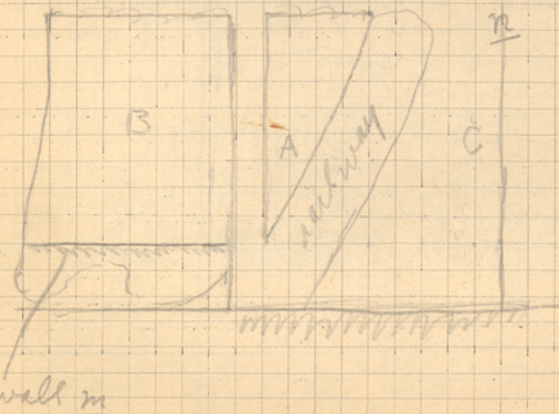
Another wall appeared to east - (wall n in the plan) and along the western face of it (C on plan) were charcoal remains of burnt wood, at a depth of from 30-50 cm. below the surface.

In section C to east of railway were found 6 iron weights and one tiny vase.

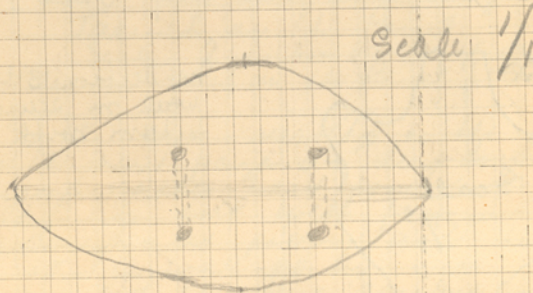


In section B the wall m seemed to turn north

Scale 2 blocks = 1 meter  
Plan of trench on point

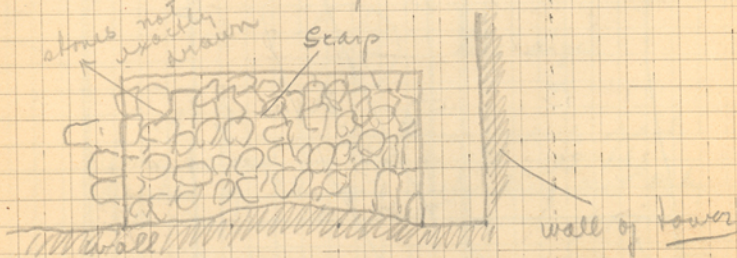


In Trench III we cleared the scarp further and dug down trying to find the extent of the scarp toward the north. A term weight of following shape and size was found wedged in between the scarp and the wall.



To the east of the section already dug we proceeded along the wall. The scarp ended in a fairly fine straight line, and then below, further the wall returned, apparently in a tower.

Scale, each square 25 cm.



The scarp apparently stops in a straight line as shown in the plan with a row of stones set up on edge. The stones of the scarp itself are for the most part roughly oblong found flat surfaced, - all inclined at an angle to 45° to form the scarp.

Near the corner of the tower we found the coin shown below, a bronze coin with a head on one side; the reverse was too much covered with encrustation to be discernable.

Rough sketch below:



350-300 B.C.

Coin 1 (15)

Photograph No 7 on Roll

Photograph of the first section of wall found in Trench III, taken from across trench to north. The ledge of scarp is visible to the left.

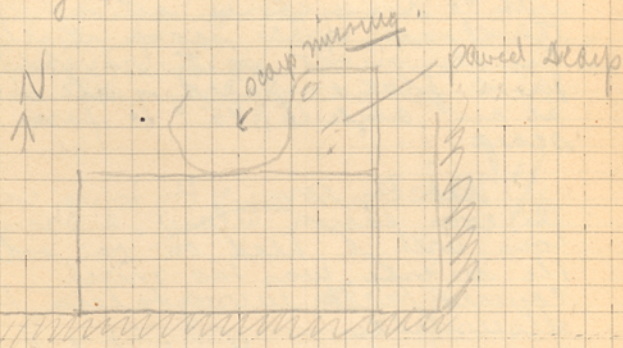
Trench III no 2.

Photograph No. 8 on Roll

taken from west into second section of Trench III showing scarp and return of the wall to form the tower. Trench III no 3.

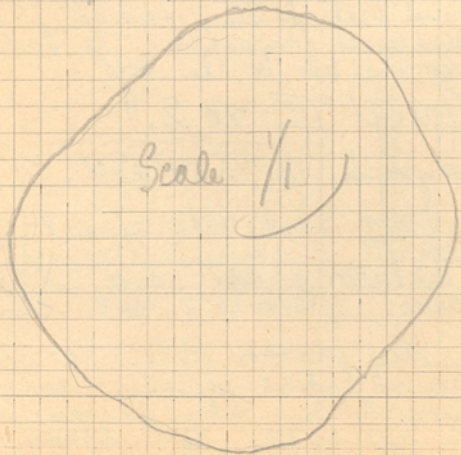
We dug further below the scarp and found that it still continued downward. We also began to clear away the dirt along the lower edge of the scarp between sections 1 + 2.

In one place some of the scarp was missing; as shown in diagram below.



We dig down here below the level of the scarp and found a much higher % of pottery. Some cooking vessels were almost complete, though in fragments. They were badly mixed together.

A round ball of iron was also found.

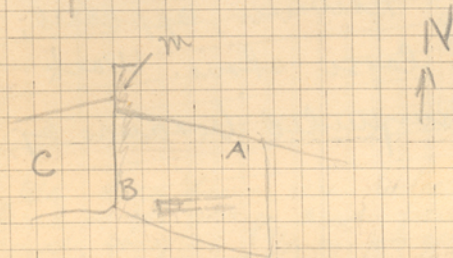


April 26, Wednesday. 17

In trench # we dig to the west of the tumbler in the western section, trying to find the face of the wall. Nothing, however, appeared, except loose stone. Work was suspended because of rain.

April 27 Thursday.  
In charge of Trench VI

We opened the trench on both sides of a wall appearing, as planned, 1 square = 1 meter

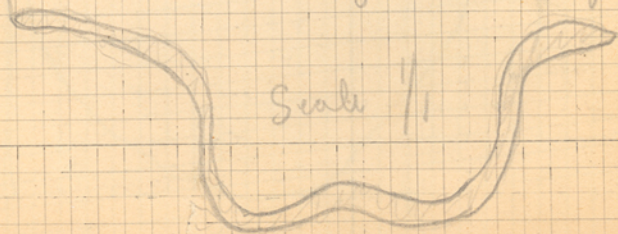


almost immediately below the surface the soil was very hard and clay-like.

At point A an oblong piece of carbonized wood was found at a depth of 25 cm.

Charred soil found at point B at depth of 15 cm.

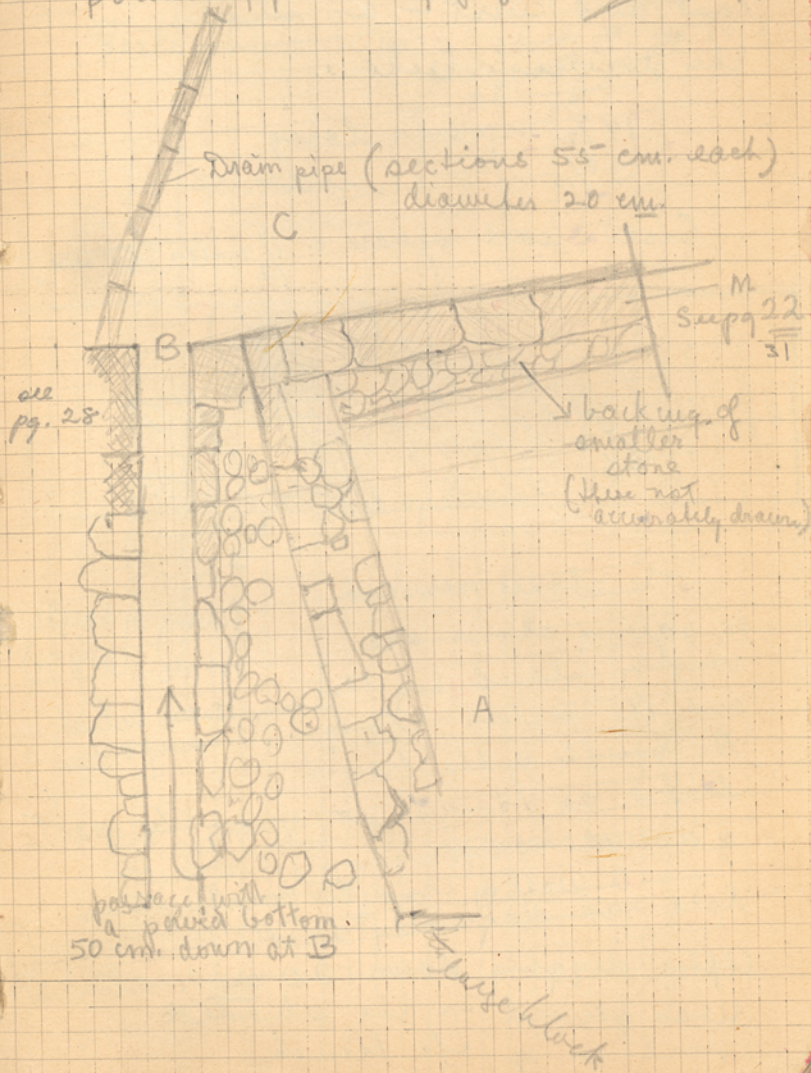
At point C, depth 60 cm, below top of wall m, a bronze handle was found



Following is plan of Trench VI 19

Scale 1 square = 25 cm.

Points A, B, C correspond to points of preceding page.

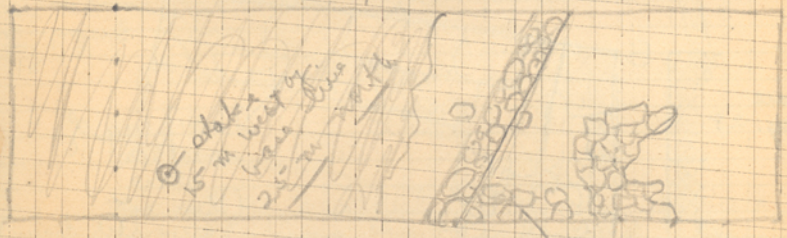


20 In Charge of Trench VII.

The trench was opened, running east and west - as shown in the diagram below.

14 1/2 meters long  
3 9/10 " wide

Scale each square = 1/2 meter (50 cm).



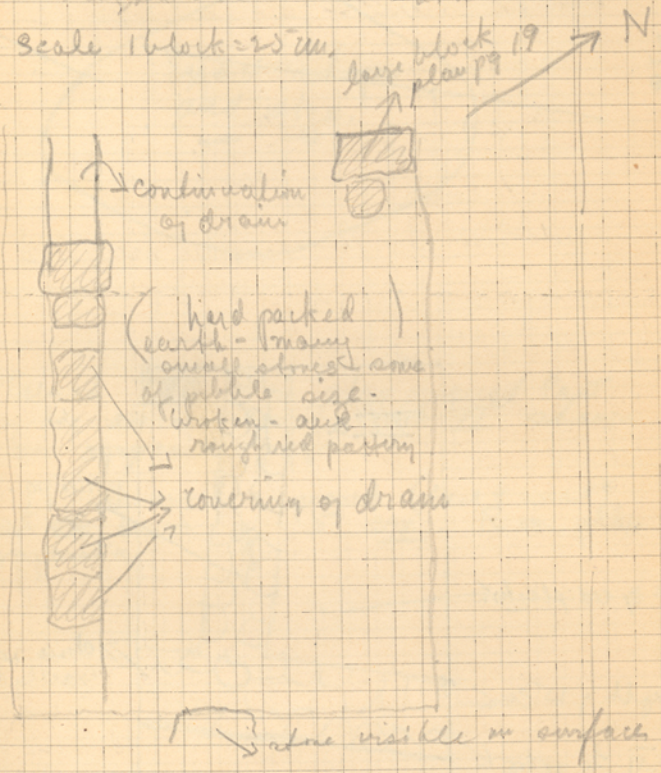
The stones marked as paving stones are roughly placed together, and the section along the south of the trench looks as though it may be part of a wall construction.

A wall of rough construction does run diagonally across the trench. After digging down 20 cm, stones were found in the shaded portion of the trench.

Placing of small stones, (30 x 30) 10 cm. below surface.

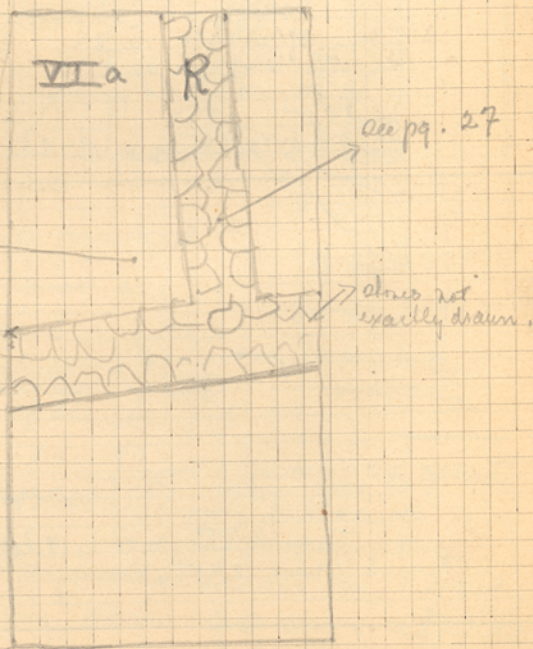
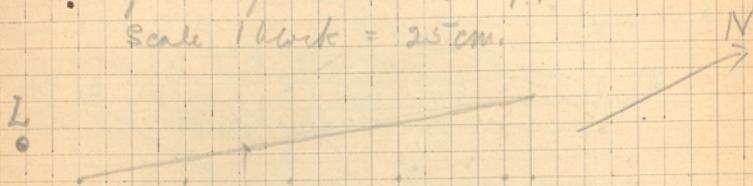
In trench VII we dug further to the east, as shown in the plan below.

Length 540 - East width 380  
Scale 1 block = 25 cm.

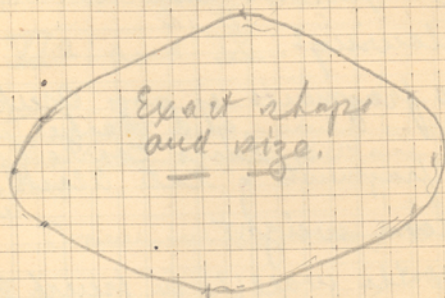


See opp. page. Photograph no 10 on roll.  
- Trench VII no 1, View of trench from east. -

Trench VI was continued to north  
along line of west wall, see pg. 29, 31,  
Scale 1 block = 25 cm.



at L (page 22, a large wt. was  
found (depth 20 cm. below surface  
of wall)



Trench VII was also opened East  
of the extension of Trench VI shown  
on opposite page.

A wall appeared (East + West),  
at a depth of 5 cm. R on plan  
opposite

The pottery from trench II was  
(see pg. 4) gathered and consisted  
of the following:

- ca 40 fragments of poor Greek tiles
- 3 " of a large pillow
- ca 40 " of large coarse glass
- ca 8 fragments of Late black glaze ware
- 1 loom weight

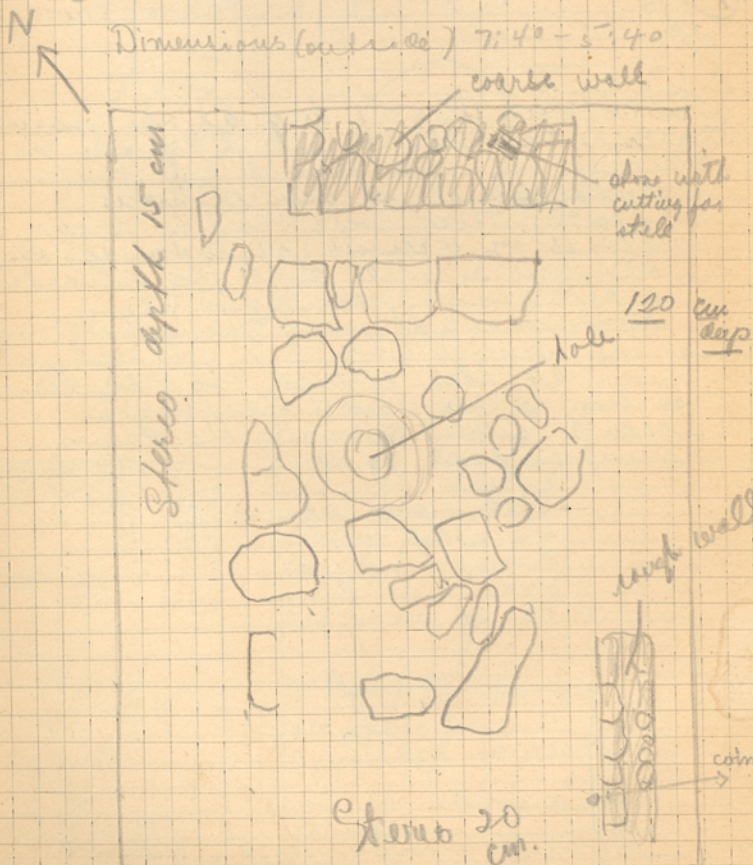
Outside the wall (?) in trench II  
large mass of fragments of plain  
red tiles

- 2 loom weights of leucoid form
- 100 mm fragment of plain red tile

April 28 Friday

In charge of trenches IV, VI,  
VIa and IX.

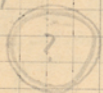
Trench IX was opened in the center  
of the point of the terrace, as shown  
below.



Trench IX abandoned: Apr 28

A small bronze coin was found in trench IX at the point marked in diagram C, page 25. It was at a depth of 20 cm below the surface.

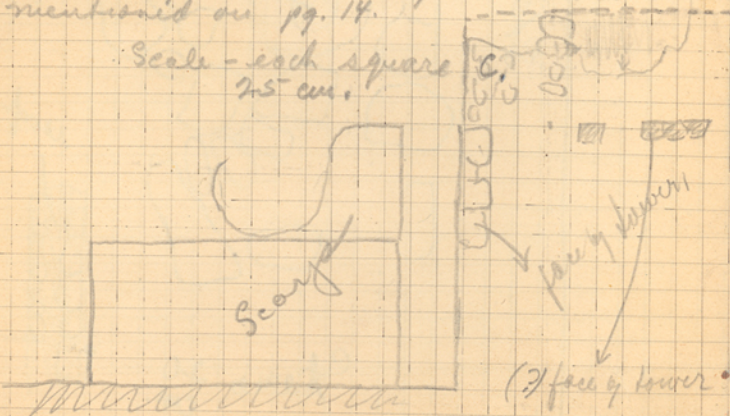
Coin 2  
26  
350-300 BC



In trench III we dug at the point marked Z in the diagram on page 10, and found the continuation of the wall, in very ruinous state. There were many loose stones of various sizes on either side of the line of wall, but no indication of the scarp point in the eastern end of the trench.

We then opened the eastern section of the trench farther in search of the corner of the tower mentioned on pg. 14.

Scale - each square 25 cm.



In trench VI a, a cross wall developed - See pg. 22. depth 20 cm.

In trench III the face of the tower to the north appeared (as in plan opposite). The following coin was also found at the point marked C.



Scale Coin 3  
1/1  
400-350 BC

Photograph no 1 on roll

Trench VI no 1 from NW showing drain pipe - leaving wall - house wall - drain beyond.

In western end of trench VI we dug down to 70 cm below the threshold of the drain. The pottery found was chiefly fragments of the aged rough red ware as above.

In trench III the true face of the tower appeared to north, with the return at the corner.

Photo no 2 on Roll  
Trench III no 4. From point shown

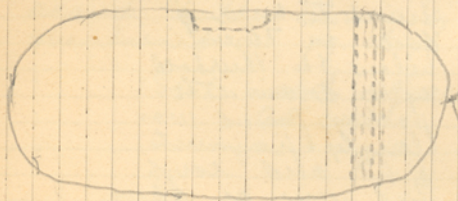
April 29, Saturday

Trench VI was continued

to the South and South West along the line of the large wall marked M on the plan at page 19. see plan on opp. page.

The excavation north west of wall m uncovered a series of walls, some of which are shown in the plan on the opposite page. South east of m we struck nothing of interest.

The following is the size and shape of the loom weight found as indicated opposite:



Trench VI



depth 450 cm below wall x

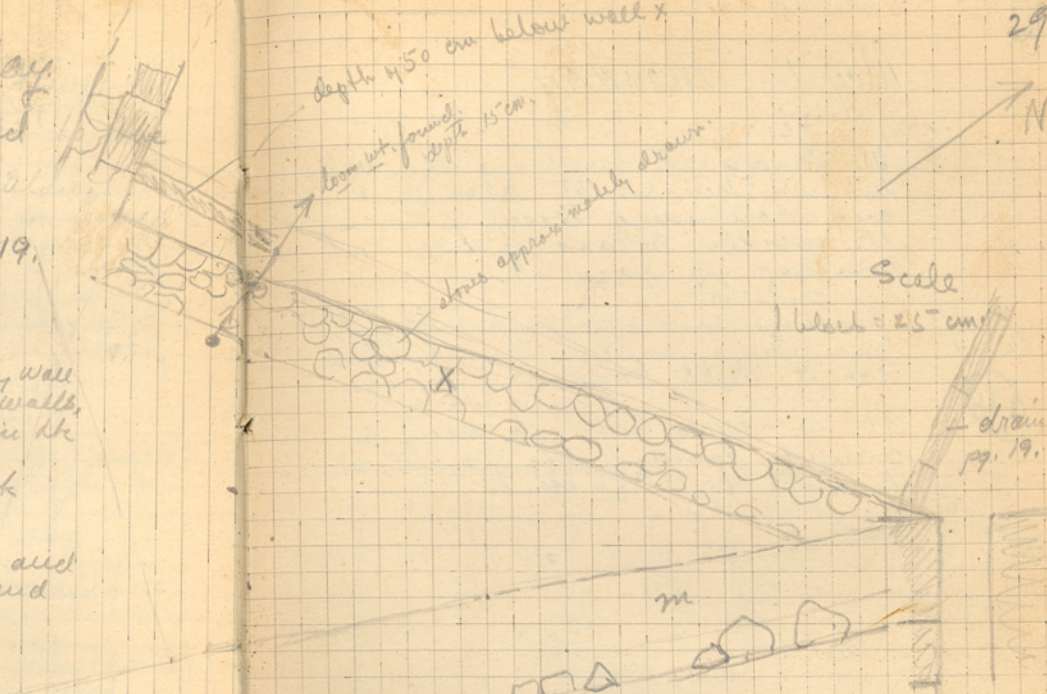
loom wt. found depth 15 cm

about approximately drawn

Scale

1 block = 25 cm

drawn pg. 19.



2 Cards run with difficulty, from Machadzik to Duvendire.

April 21, Friday.

Work in loamy high trench below terrace. Trench No II.

Trench opened 7 meters by 2 m. in loamy soil intermingled with many loose stones.



See diagram Stone A, found as shown with face down. Overall dimensions

77 long, 45 wide, 35 deep.

The face and top and bottom are roughly picked. Next to the face on the inside are anathyroses of 10 cm. The back of the stone and rest of walls is left rough. The stone is clearly not in situ (with face down) and apparently fell from a wall construction above.

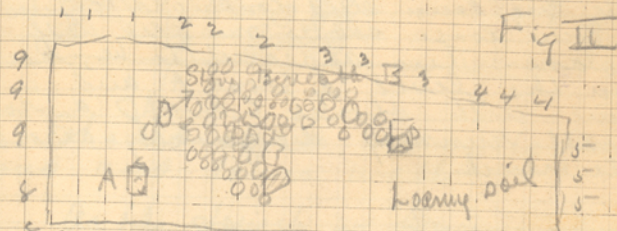
Stone B was found on a higher level, as shown in diagram, 1 meter higher than Stone A. The stone does not seem to be worked, but the upper surface was approximately flat. When turned the upper surface inclined downward toward the west at an angle of 30°. Upper surface 60 x 55 cm. Thickness 35.

Photograph 1, (Mr. Olsen's Camera)

11:30 morning, from east showing view of trench. Camera set at point S of diagram.

noon

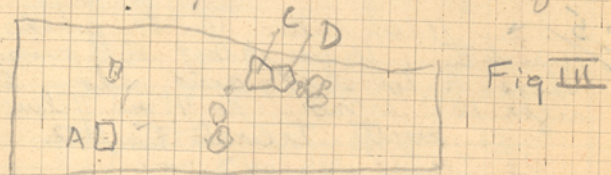
Beneath Stone B and still higher than A were several other large stones, entirely unworked and slightly smaller than B.



Same as other page showing field of small stones

In the afternoon we cleared away the small stones in the center of the trench. They seemed to be a slow accumulation of the result of tumbled. They were not closely packed but mingled with a great quantity of loamy soil and none of them were worked. The prevailing size was of one and two man stones.

At 5:15 we came across 2 large stones C and D as indicated below, under the rubble and on the same level as A. They are 120 cm. below surface.



Their tops are approximately flat but they do not seem at all worked, not even where they join.

End of Day

May 1. Monday.

We began excavating the section between trenches VI and VI a and continued clearing away the section SE East of VI as shown on page 29.

Coin 4

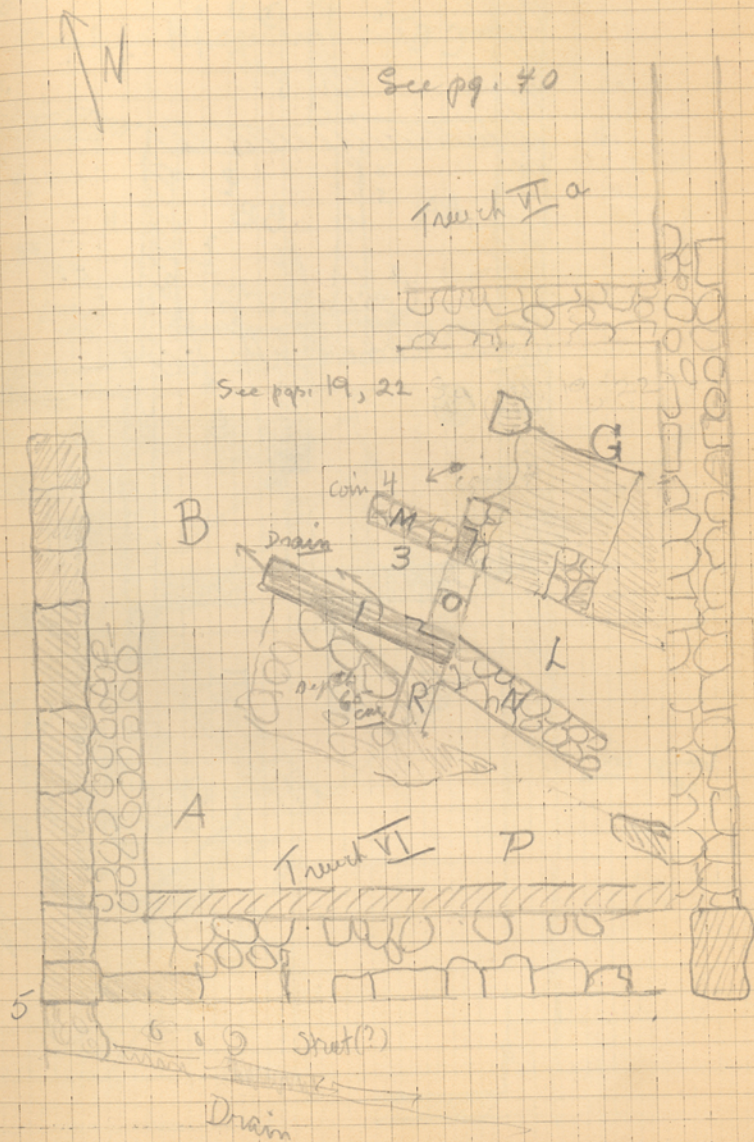
(14)

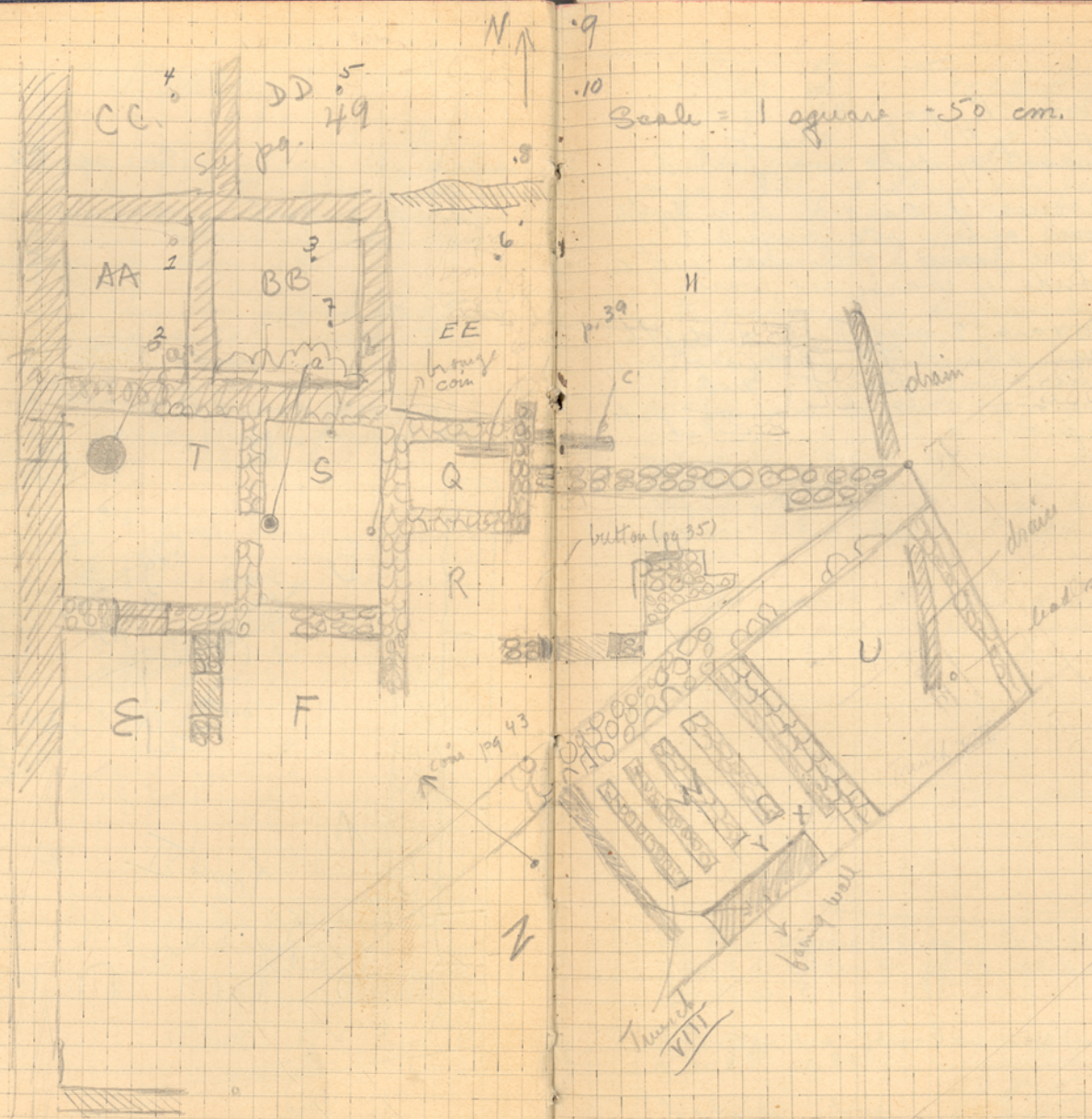
A bronze coin was found at pt marked opposite Trench VI a coin 4 depth 50 cm.

On the corner G (on opp. page), a cement paving was found at the depth of 70 cm.

350-310 BC

See pg. 40





bronzes com  
pg 44  
→

com pg 43  
↑

9  
10

N ↑

↓ S

Trench VIII

In room P, page 33 down to a depth of 40 cm. about 50 fragments of tile were found.

In rooms G, and R, to a depth of 60 cm. about 150 fragments of tile were found. There were only a few shards of coarse red ware.

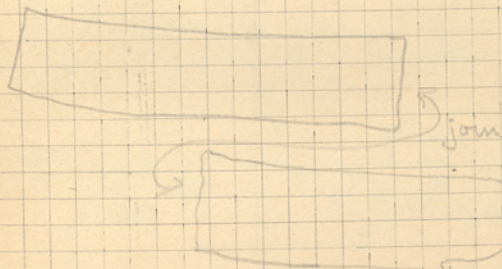
In rooms S and T to a depth of 60 cm. about 95 fragments of roof tile were found, and fragments of several cooking pots. One cup.

May 2. Tuesday

At point L in diagram of page 31, a lamp was found. Entire, except for the broken nose. Diameter of lamp 60 mm. diameter of opening only 18 mm.

In section P of diagram on page 31 there were very few fragments of tile, and much red pottery in the soil. The shards became rather scarce and most of them were covered with a black glaze, not of the most durable and brilliant variety, however. These black glaze shards began to appear at a depth of from 75 to 80 cm.

At point P also a piece of bronze implement was found.



A lead sphere (1 in. dia),  $\frac{1}{8}$  in. thick was found as shown on pg 33, at a depth of 40 cm.

A button was found on wall between R and P, pg 33.

Material Bone  
Depth 15 cm.



In Trench VI a we continued down and cleaned the same shown on page 31 to a depth of 120 cm. In the corner by P, black, charred earth was found at 100 cm. in small quantities.

Further excavation to the North of Trench VII (toward VI) revealed two more sections of wall and then another facing wall before the north wall proper. (See pg. 33) At x, a quantity of fragments of cow tiles was found, about 100, and several were put together almost entire. This was done to a depth of 50 cm. At y, pan tiles were found, of which 2 were put together with few missing pieces.

We also began cleaning out the region between the Trench VII section and the drain. (See plan, pg 33)

At point 4, again, at depth of 50 cm, a lead clamp was found of doubtful variety.

In Trench II a (pg 31) a drainage channel appeared as shown on the diagram, depth 75-80 cm.

Photo. No 4 on Roll

C26 ↓ Trench II a (Interior of Room from N.W.)

C27 ↓ Photo No 5 on Roll  
Trenches R, Q, S, T, pg. 32-33  
from point N.W. of T. I

C28 ↓ Photo No 6 on Roll  
Trench VII from West.

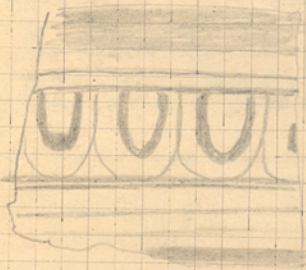
May 3 Wednesday.

In trench II - II a we continued down in the western section from P to Q in plan, pg. 31 and at a depth of 140 cm. Below the corner at P we came into a layer of sandy soil, which ran through to A horizontally. At Roman numeral II on the diagram it is 100 cm below the surface.

From 80 cm down to 120 cm in corner of trench II at P there were very few strands of any variety, but many roof tiles. We gathered as many as 200 fragments in going down the 40 cm. There were also several fragments of rough red pots.

From a depth of 120 cm, design pottery began to appear.

in a black on red pattern well polished and with a heavy glaze paint.



Scale  $\frac{1}{2}$

There were also examples of the receding pattern - and some fragments of three-color ware.

Red and brown - on yellowish gray.

Three little jets were also found.

In section S (pg. 32) a bronze coin was found as marked on plan. Depth 45 cm.

Coin 5-

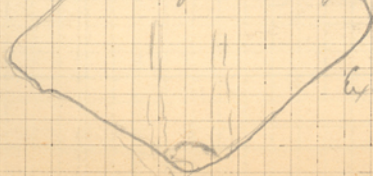
(53)

850-10

pg. 32 "a" is a small beam, pot 30 cm deep. It was covered with a round terra-cotta plaque.

At a depth of 50 cm. at a point marked b in section S pg. 32 plaster was found mixed with burned wood. At the same depth in section Q was found near the wall (at same depth with the wall represented by the small section c. to the north of P in page 33.) the wall shown as d.

In trench IX in the center of the wall excavations were resumed the trench was extended to the north, and along a line of wall to the east (see page 41). Directly north of the square of stones 15, the ground was fully quarried by shaft pits and voids of excavations. A loam weight was found:



Good size & shape

In trench Va and VI (pg 31)

The pottery gathered from a depth of 140-160 cm below the cornerstone at P was as follows:

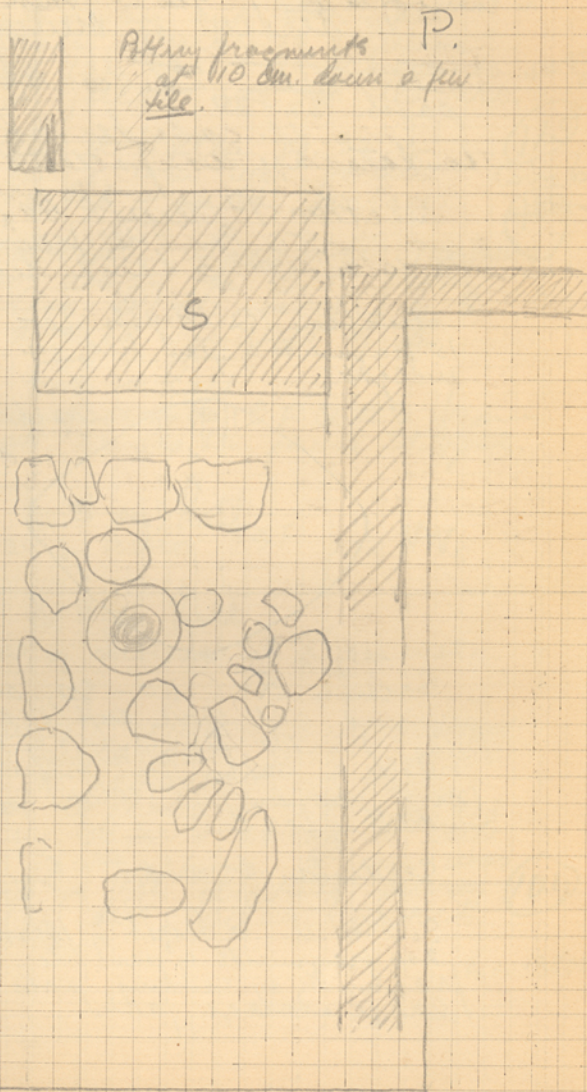
at L, quite a few rough red sherds, some few were however acid on or lino with patterns

at P. Fragments of lino and rough pottery - one or two classic and pattern ware sherd.

at A and B - a large % of classic sherds and less coarse ware. Also a larger quantity of sherd.

In section X of trench VIII at a depth of 50 cm, were found few fragments of terra-cotta figurines.

- (1) A female bust
- (2) a female (?) head
- (3) male legs (horse gear)
- (4) one leg - indeterminate.
- (5) torso



May 4, Thursday

In charge of trenches VI, VII, over to V.  
In charge of trench VIII, ten workmen.

In section of trenches

VI, VII, V as shown in  
pages 32-33

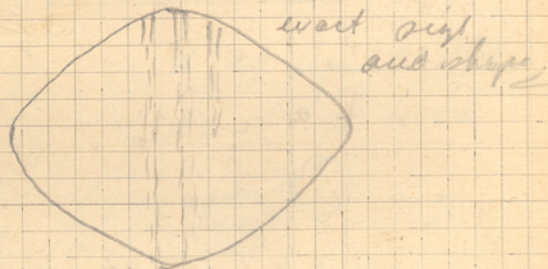
The sheds taken out  
to date are as follows:

Section P depth 40 cm - 50 cm

50 Pan tiles fragments  
Parts of 2 or 3 large red clay pots

Section Q depth 60 - 70

15 fragments of pan tile, one brown  
weight



west side  
and slope

Section R 60 - 80. one fairly  
preserved red ware cup (taken to house  
May 3) - 100 fragments of tile. Frag-  
ments of rather fine Hellenistic ware  
(not painted). Several shards of  
black glaze

Sections S and T. See page 34

Section U. to Depth of 100 cm.

200 fragments of pan tile, a few  
fragments of cooking pots and  
large storage jars.

Section W at points X and Y especially  
depth 0 - 80, 300 fragments of  
pan tile - pan and cover - five  
fragments of terracotta figurine  
(see pg. 40). about 75 fragments  
of large yellow and red clay jars. 400-350 BC

In section Z of plan pg. 32 a  
small bronze coin was found  
as indicated - on the surface.

The workmen began this morning  
to clear away the dirt from  
the section to the south of S  
and T and to the West of Z.

Photo No 2 on Roll

C30 view of section EFQRS from  
the west, across the paved St. pg 32.

C31 Photo No 3 on Roll  
view of section TSF from NW.

C32 Photo No 4 on Roll  
view of sections SRQ from west.

In trench IX excavations continued  
to the north west. What seemed  
to be a pavement of kilning  
chips appeared at TP (pg. 141)  
and was cleared away. The dirt  
from that section. A coin was  
found in the clearing away  
by the dirt, silver coated. 104

May 5 Friday

In charge of numbers VI a - VI,  
VIII and section, as shown on  
pg. 32 over to K.

This morning we opened up  
the section South West of Z,  
and continued South along, the  
paved street to the west.

In the paved street, west of  
E pg 32 a bronze coin was  
found. Persian on one side and  
Com 7 indicated head on other.

⑥  
350-300 BC



Coin was found in the layer  
of soil 20 centimeters above the  
pavement of the street.

May 6 Saturday

The man who owns the fields  
just inside the gates in the wall  
toward Trajia is named:

Kolji Mactum.

كولجي ماکتوم

At Trajia a stone with  
a very late inscription was  
shown us by Osman Effendi,  
in an open yard about the  
stone.

The fields near the round  
towers are called: -  
Kara, kait - Ozo

May 8, Monday.

In charge of section from  
II a to paved street through  
I. See pg 32. - pgs 48-49.

Nine workmen.

In digging down through the section  
about pt 2 (pg 48) there  
occurred a layer of tile in  
enormous quantity at depth  
level with top of wall preserved at  
point 4. At point 2 several better  
pots and a small figurine were  
found, the figurine was of a boy in  
reclining position, back broken  
away, head gone.

We continued to dig down in  
sections 2 and 6. The soil in  
section 2 was quite full of tile  
fragments, and in 6 the soil  
was of a yellow claylike nature,  
with numerous numerous tile fragments.

C 39 / Photo Roll no 5. Photo from  
point 5 toward 3 and 6 (pg. 48) ←

May 9 Tuesday

In charge of section from  
I through III a.  
See pg. 48-49 - 50-51.

Sixteen workmen.

We worked on left side of paved  
St. through Trench I (main ch.) at  
the South eastern end.

At pts 7 and 8, pg 48, plaster  
appeared at a depth of

100 cm below top of wall at pt 7  
30 cm below top of wall at pt 8

The plaster at pt 7 was very coarse,  
about one inch in thickness and white.  
It had fallen from above to the floor.  
At pt 8, there was also temple plaster  
on the floor, and a few fragments  
were still preserved in the very corner  
in situ in the wall. The plaster has  
a very thick body, and a somewhat  
reddish color back of the 1/4 inch on  
the face.

At pt 1, pgs 50-51 a bronze coin  
was found and a small bone button  
Depth 10 cm below level of  
stake at 2.

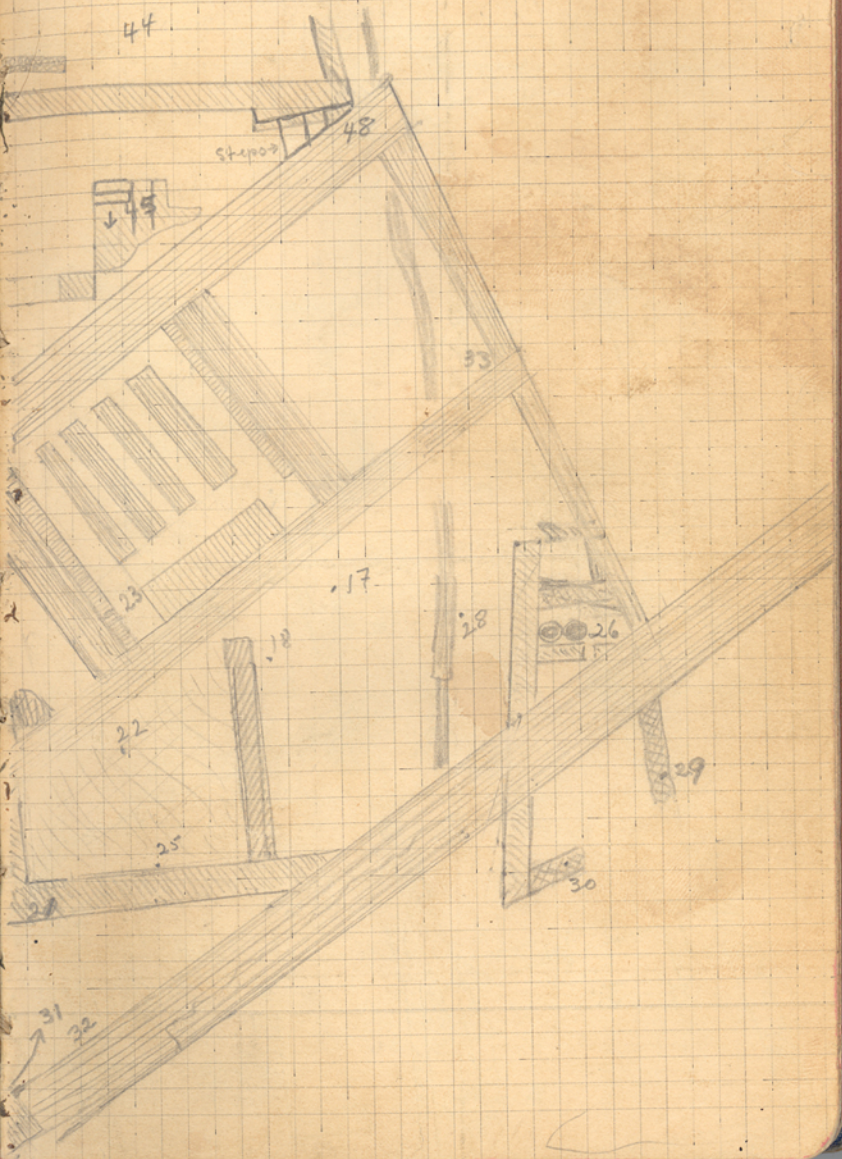
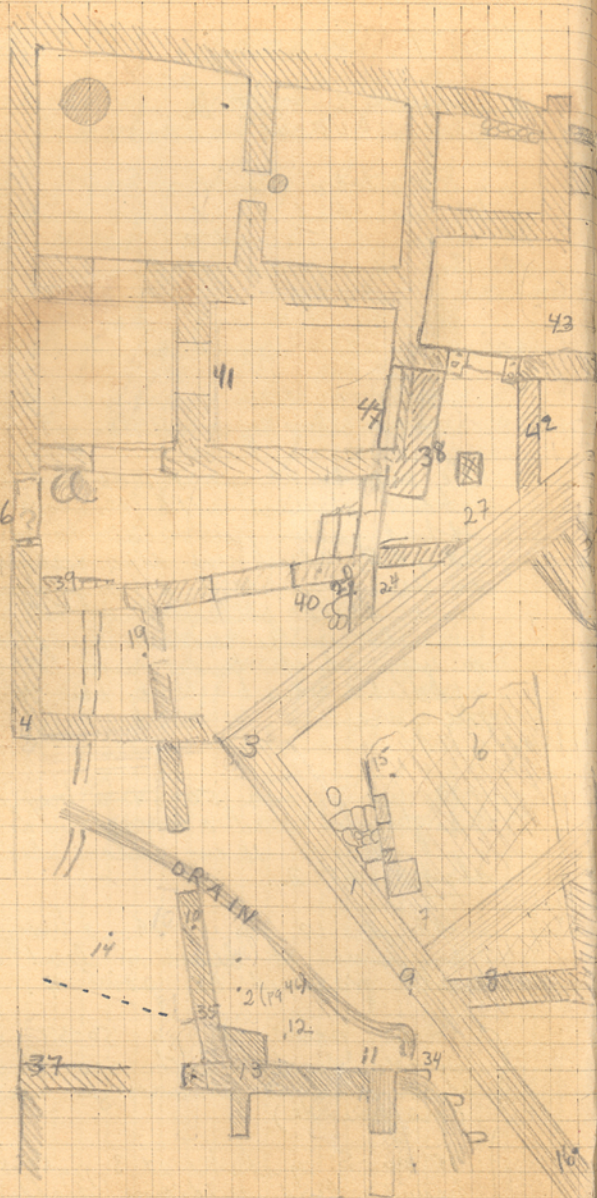
Coin  
214  
400-550 (?)  
Cm  
9  
350-300 (?)

At pt 10 pgs 48-49 a bronze coin  
was found at depth on level with  
wall preserved at point 4.

At point 1, pg 50-51 at  
same depth with coin 8 were  
also found 2 bronze needles (?)  
(fragments)

75 cm. S. of stake at 3, pg 50-51 was  
found a lead gridiron. Depth 20 cm  
below ground level at stake.

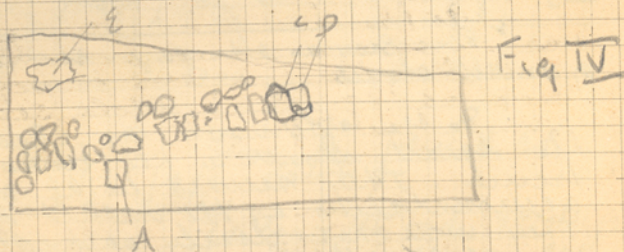
- 16
- 19
- 20
- 21
- 22
- 23
- 24
- 25
- 26
- 27
- 28
- 29
- 30
- 32
- 33
- 34
- 35
- 36
- 37
- 38
- 39
- 40
- 41
- 42
- 44
- 45
- 46
- 47



April 22. Saturday

In charge of trench II.

In the western end of the trench we dug down and continued to find a few loose stones mingled with the loam. There appeared to be, however, on the level of Stone A and in line with stones C and D a rough wall running diagonally across the trench.



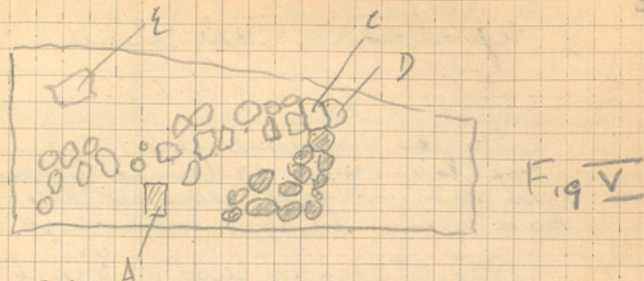
See pg. 24.

Practically all the pottery fragments except some pieces of shales were found in the corner of the trench enclosed by this wall.

Large stone E in corner of trench appeared on a level 25 cm. lower than A. It is entirely unworked.

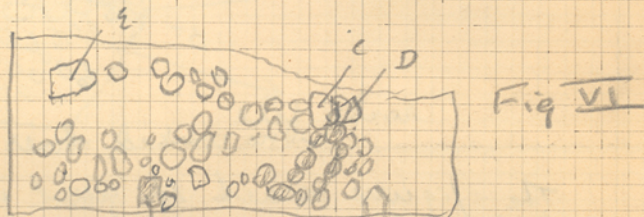
C5 -> 11:00 A.M. 2nd photo of trench II, from west, showing wall, stone A to left, and stone E in right far corner. No 4 on film roll. Meritt Trench II, 2.

At a depth of 40 cm. below stones C and D a second wall was laid bare, running from north to south, - not quite at right angles to the wall shown above.



Shaded stones belong to the second and lower wall.

As the trench we down rocks of various sizes appeared on both sides of walls I and 2 and it began to look as though the whole accumulation were a hummock.



The above is the appearance of trench when excavated to a depth of 50 cm. below the C-D level.

C6 -> At 4:00 P.M. photo from western end of trench showing rocks as in the above picture. Meritt Trench II, 3.

At 4:00 P.M. I took over trench III from Mr. Stevan. In the lower part of the trench the men had gone down to stereo, and only in the upper part were many stones in evidence.



Along the line of wall from 2 to 11  
pages 48-49.

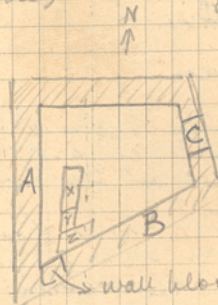
We found a stucco face toward the north - apparently applied directly to the stone and averaging 1 cm. thick. The body of the plaster was white, with a red face. This plaster was lost down the face of the wall for 60 cm. approx. except at the projecting in the corner of the wall (12 on plan) where the plaster and coloring are best preserved. Beyond the projection 12, the wall seems to return to the north, as shown in plan, with a width of 40 cm.

In the section to the west of the paved st. just to the east of the stake marked 2 on the plan pg 50-51 a plaster floor appeared at a depth of 60 cm. below the level of gravel at stake and 35 cm. below the level of the highest part of the wall at point F.

Com 10  
28 A bronze coin was found south of stake at 3, pg 51, at depth of 70 cm. below level of earth at stake, or 45 cm. below level of corner of wall at 4.

In the room about point 2, pg 51. There are three different periods evident. The period of the plaster floor mentioned above is the earliest.

At a 20 cm. higher level, however, the workmen cut through a line of floor which is co-extensive with the room (12) as diagrammed below.



Stones x, y, and z, forming a wall as indicated on pg 51 are placed on the second floor level mentioned and consequently represent the third period. The upper level of floor plaster ceases on line of inside of wall A, although the wall itself has in some places been destroyed at the same level. The plaster abuts also at the southern side of the room on a wall block which carries the line of wall B. On side C, the upper ledge of flooring abuts the door sill, showing the door sill in the wall C center parity with the upper level of flooring.

May 10 Wednesday

In charge of sections to east and west of paved St. Trenches VI, VII, I and extensions.

18 Workmen.

A new trench was opened in the region of point 6, pg. 51, to clear houses west of paved St.

At point 12, pg. 48, near the plastered wall a bronze coin was found at depth of 120 cm. below level of highest point of wall at 13.



Laurel  
350-300 B.C.

Coin II

(16)

A vase, almost entire was found at pt. 14, pg. 48, at a depth of 150 cm. below wall at pt. 13.

In digging down in room about 6 page 48, a paving of plaster appeared at a depth of 140 cm. below level of high point of corner at 9. The plaster appeared first at the point 15, at which point on the floor was found fragments of a ware of coarse red ware.

Coin 12

(3)

At point 7, page 51, a coin was found practically on the surface.



4th C.

At point 16, pg. 48, a small vase entire, except for side handles and part of lip was found at depth of 125 cm. below level of high point of wall at 13.

C. 41  
Photo - No. 6. W. side - view of room about 6 (pg. 48) from corner of room at point 3.

In room about pt. 6, page 48, the tile fragments continued to be fairly frequent down to the plaster pavement mentioned in page 57. The plaster did not cover the whole room, but toward the north had fallen away. Its position is roughly represented by the shading in the plan, pg. 48. Where the plaster is broken away to the north there is immediately under the floor a pile of small stones, and tile fragments mixed with earth. The plaster appears to end to the west against a line of stone walls, and on the east it ends with a beautifully finished edge, - with no wall, however. See pg. 62.

The wall from 13 to 11, pg. 48, enveloped a return, as shown on diagram at pt. 11, toward the south. The curved part is a later addition and does not bind into the section to the west. The old plaster also ends at the line of break in the wall - and seems to have returned with its wall to the south.

At a point 1 meter north of  
point 2 (see plan page 48)  
a case of black painted ware and  
a case of red ware were  
turned up almost entire.

May 11 Thursday

In charge of sections about paved  
street. 18 Workmen.

Between the walls at 11 and 9  
pg 48, a large number of loose  
stones were found, with some  
few like fragments intermingled.  
Depth 20 cm. to 1 meter below  
high point of wall at 9.

At point 14, pg. 48, a bronze coin 13  
was found, 2 cm. above  
stereo. 27  
400-350 p.c.

At point 8, pg. 50, a bronze  
coin was found, depth 50 cm. 20 coin 14

At upper end of paved st,  
100 cm south of edge of  
pavement, at pt 9, pg 51  
a number of coins were found, Group  
in the strata 20 cm. above  
stereo. 15  
434-450

The tiles and pottery fragments  
collected from the various sections  
above the paved st are as  
follows.

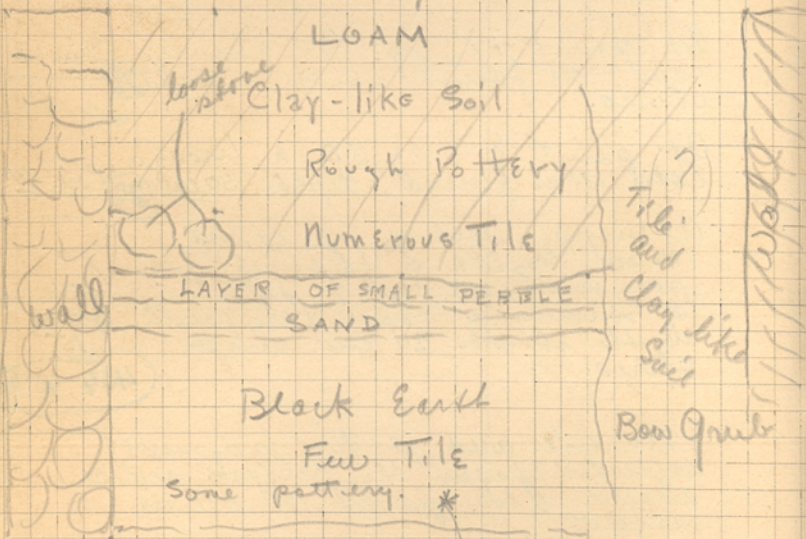
About pts 1-2-3-4-5, pg 51, ca. 30  
fragments of tile and rough  
red pottery, several shreds of black  
glaze ware. Depth surface to stereo.

About pts 14-10-2-12-11, pg 49 -  
(a) About 24 few tile fragments  
only a few rough red pottery fragments.  
(b) About 2-12-11, the tile, small  
above, and rough pottery continued  
down to stereo.

In the room about 14,  
pg 48. The floor level appeared  
in the stratification of the  
face of bank to south of room.

The following is a south  
elevation of the bank, showing  
stratification, along the  
line indicated by the dotting  
in ink, pg. 48.

Scale 1 square = 10 cm.



Stereo

Depth of coin 13

It seems that the floor must have  
been along the layer of pebbles.  
The tile fragments were above and  
very close to this layer and the  
fill of loose stone lay just above  
this level.

A bronze coin was found at  
pt. 10, pg 50, at a depth  
of 40 cm. Coin No 16  
(25)  
350-300 BC

Photo No 1 on Roll

~~CH 2~~ View of 3-4-1-2-9, pg 51  
from West.

~~CH 3~~ Photo No 2 on Roll

View by end of paved at  
about pt 9, pg 51, from North

~~CH 4~~ Photo No 3 on Roll

View of 14-10-2-12-11 pg 48  
from pt 4.

A bronze coin was found at  
point 7, practically on the  
surface. Point 7, pg. 48. Coin 17  
(135)  
400-350

A drain pipe appears in  
section north by 14 and 12  
pg. 48 as shown in diagram  
top is laid in a trench cut in  
sterco.

A bronze coin was found at pt 8  
pg 50, depth 30 cm. Coin  
(221) 18

At point 11, page 48, where the wall returns at st. L<sub>3</sub> to the south the rough coating of plaster continued in antiquity across the break. A thin coat of red plaster made the face of this wall. (See sample)

The plaster stopped at the bottom of the wall, in a curved line roughly following stereo.

May 12 Friday

In charge of sections by the paved street

15 Workmen.

From the strip 4 meters wide running E and W between points 4 and 6, 1951 the shards of pottery collected to a depth of 0-50 consisted of several fragments of ware. Most were some stamped ware shards (black painted) and some poor black painted ware.

A bronze coin was found at a point 2 meters west of olive tree, page 50, 10 cm. below surface.

Coin  
19

112

Photos of and 5 - to Miss Eldridge.

400-35000

62 May 13 Saturday

In charge of current section  
14 Workmen.

Work began at two points,  
about the olive tree (pg. 3-4)  
and in front of large bldg.  
pt. 49.

To the south of the wall 13-11  
page 48, we cleared away the  
earth and found part of a  
house on the upper level. Walls  
were found as indicated on the  
plan. To the west walls were  
found continuing the line of  
walls on sides of paved street  
to the north. (See plan pg. 48).

Coin 20 A coin was found at pt. 11, pg. 51  
depth 170 cm below level of  
wall at 6.

453

In the room about 8 pg. 48 there  
appeared walls carrying the line of  
the edge of plaster found at the  
lower level in room about 6.  
See plan.

In the room about 6 we cleaned  
away the segment to the west of  
the plaster area and laid bare  
the section of pavement there  
preserved. 2nd diagram on the  
plan page 48 as preserved.

Exactly at point 16, page 48  
(lower right hand corner) part  
of the plaster of the wall is  
preserved - melting the plaster  
by the floor - which lies at a  
depth of 19 cm below the inner  
edge of the wall preserved at  
this point.

A bronze coin was found at  
depth of 30 cm at pt. 12 pg. 50

Coin 21  
(111)  
450

Photo No 6 on Roll.

Across west <sup>South?</sup> end of Stoa to  
points 11, 13, page 48. Building  
standing on a preserved  
section of flooring in the stoa.

C 47

Photo No 1 on Roll.  
View of section about  
the olive tree, toward the  
west.

C 54

64 May 15 Monday.

In charge a section about paved street east west end of stoa.

16 workmen.

A bronze coin was found at pt. 17, pg 49, at a depth of 15 cm.

Coin

21

(32)

4th c.



A fine vase was found at pt. 18, pg 48, depth 25 cm.



Photo No 2 on Roll to Miss Goldman.

The work continued along front of stoa, and stoa on pgs 60-61? Laying bare the front wall, and about Trench VIII, the central wall of stoa was excavated.

About the olive tree, west of paved area, there were no finds but we continued to remove the dirt.

May 16 Tuesday

65

In charge a section about paved street east west end of stoa.

16 workmen.

A bronze coin was found, old Coin <sup>22</sup>

(474)

A bronze coin was found at pt 13, pg 50-51, depth 150 cm.

Coin 23

(755)



A bronze coin was found at pt 14 pg 50 at depth 30 cm, below level of wall preserved at 17.

Coin 24



A bronze coin was found at pt 15 pg 50 at depth 30 cm, below level of wall at 17.

Coin 25 (58)



400-350

About the olive tree, down to a depth level with the wall pg 50 point 17, very few tiles or fragments of pottery were found.



Those discovered were:

50 fragments of roof tiles  
 50 of script red pottery  
 one or two shards of red shampell ware  
 one or two shards with some black  
 paint

Coin  
 26  
 A bronze coin was found at pt. 1  
 pg 69. Depth 30 cm. below top  
 of wall at that point



369

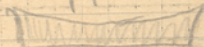
C 50 → Photo no. 3 on wall to the right

C 51 → Photo no. 4. Trench north of  
 olive tree, as seen from the  
 west.

The pottery from section to North of  
 Olive tree, pg 50. for depth of  
 0-50 cm. below level of wall at  
 17 was as follows:

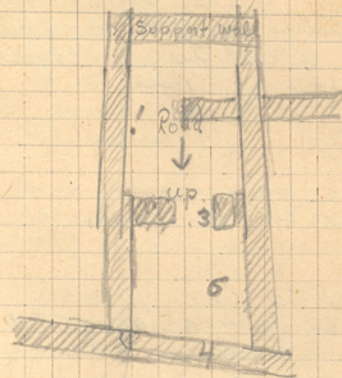
- (1) Script large rough red  
 ware - in fragments
  - (2) One or two bowls and vases  
 with green, black paint (thin, in shapes)  
 and brown paint.
- The number of roof tiles increased  
 greatly toward the depth of 50 cm.

A small bronze implement was found  
 at point 19 pg 48 depth 100 cm.



Scale 1 block = 50 cm.

Continuation of Paved St. to South  
 beyond section shown on pages  
 48-51.



face of wall

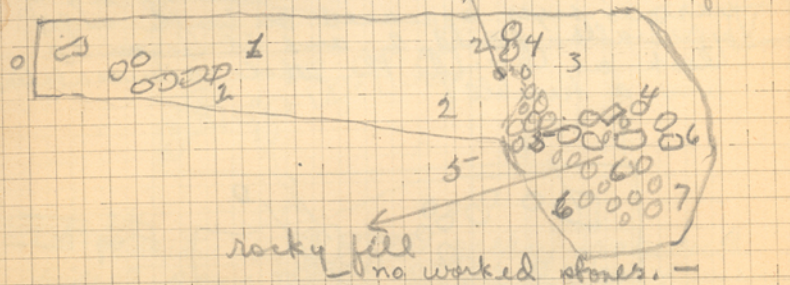


The following is a plan of the trench at the site I look at over:

width - lower end 2 meters.  
length lower side 11 "  
width - upper end - 6 stones  
4 meters. - from here starts general line of the upper side.

Bay at upper end of trench has sides 2 meters long.

Point where geometric sketch was found.



The figures mark the limit in meters, with the zero point at the lower end of trench.

The row of large stones which bisects the large end of the trench appears to be false rather than a wall. The individual stones are separated by approximately the same volume of lumpy earth mixed with smaller stones.

C 7 → Photo taken at 4:30, from the N.W. shows the row of stones in question and the earth between them.  
Munro Trench III no 1.  
no 6 on film roll.

The Tsapa is on the top of <sup>one of</sup> the rocks in question in the photo.

At 5:00 P.M. under stone A in trench II we unearthed another worked stone apparently rough dressed on every surface and rectangular.

The pottery found consisted almost exclusively of 50 fragments of plain red tile.

May 17, Wednesday.

18 workmen.

In charge of sections about paved street and west end of show.

At point 20, pg 48, a stone was found with an inscription of 2 letters

no  
I

E  
M

about 25 cm. below the surface.

Coin  
27 A coin was found at pt 12 pg 50, depth of 60 cm below level of wall at 17.

464  
C 58

Photo no 5 on roll to Miss Goldman  
To the north of the stone tree we opened another area of trench extending north from an east-west line through pt. 15 app.

In the west end of the plaza we cleared off the walls from pts 8-20, pg 48-49, and the return to the north. In the corner at 21 was a small amount of burned material and in both rooms the paved floor appeared at the same level as in the room about 6, pg 48. The burnt material at 21 was directly on the floor.

Behind the wall 8-21 stereo was excavated at about the level of the floor inside.

We continued the excavation in search of the upper end of the paved st.

About pt. 2 (see pg. 69) there appeared a number of cobble-stones which may have formed part of the pavement of the earlier st. Several large stones (which may have been part of a supporting wall of the street ramp developed at pt. 3, pg 69, and at pt 4, a cross wall appeared.

A large terra cotta figurine was found at pt. 12 pg 50 directly on the pavement.

The pottery from 50 cm - to 100 cm in sections about pts 12 and 15 pg 50 consisted of:

1. rough pots also like
2. small shaped flat terra cotta receptacles
3. a lamp.
4. small painted bowls and plates

At pt 22 pg 49, a chicken plaque 113x113 mm was found on the floor paving, with squares of green on one side and yellow on the other. Each square is 37 mm x 37 mm.

72 May 18 Thursday

In charge of sections about paved street and west end of stoa.

17 workmen.

Coin 28 A bronze coin was found at pt 23, pg 49, depth of 90 cm.

(386)

Coin 29 A bronze coin was found at pt 5, pg 69, depth 10 cm below surface.

(60)

350-200 In the section north of the stoa see several walls developed in the course of the morning. They are shown on the plan pg. 50.

At point 1, pg 66 a fine terra cotta head was found, depth 40 cm. below level of room at 2.

At point 18, page 50 half a terra cotta disk was found (used as a die).

Coin 30 A bronze coin was found north of stoa line, depth 0-50 cm. exact spot unknown.

(61)

Coin 31 A bronze coin was found at pt. 5, pg 69, depth 15 cm below surface.

(385)

A beautiful terra cotta figurine was also found at point 3 pg 66, depth 30 cm below room at 2.

This terra cotta as well as one mentioned on preceding page were in the field under the floor of the stoa.

At pt. 19, pg 50 fragments of 2 terracotta were found (Bag 5), depth of 30 cm below top of wall.

Several vases of various sorts were also found in the same room. Bag 6. The large black vase was found at the same level just above pt 18, with the die plaque.

(45)

A bronze coin was found at pt 28, pg 50, depth 40 cm. below wall at that point.

Coin 32

A couple of bases were found in section about pt 6, pg 69, small and rough ware. (Sent to house with reference) Bag 7.

74 May 19 Friday

In charge of sections about paved street and west end of stoa.

Coin A bronze coin was found at pt 21  
pg 50, depth 60 cm below  
33 wall at 22. (109)

Coins Two bronze coins were found at pt  
34 23, pg 50 depth 40 cm below  
wall at 19. (51, 52)

The urban area paved to north  
of the olive tree had a heavy  
layer of roof-tiles from a  
depth of 40-75 cm. Below the  
wall at pt 17, these roof tiles  
were intermingled with fragments  
of large pottery, jars, and pieces  
of small jattes, with rounded  
pebbles covers of terra-cotta  
and of stone (blue-shale)

C59 / Photo No 6 on roll  
View across pt 11 to pt 13  
pg 51 showing tumble.

C60 / Photo No 1 on roll.  
View across 24, 29, 18, pg 50  
from east.

C60 / Photo no 2 on roll.  
View across 19 and 20 on  
plan page 48 from west.

75  
A bronze coin was found at  
pt. 24, pg 50, depth level with  
square at 15. Coin  
300- (424)

A bronze coin was found at  
pt. 15, pg 50, 10 cm below  
square at this point. Coin  
36 (110)

A vase entire except for mouth  
and handles was found at pt 295-281?  
15 pg. 50 at depth of 95 cm.

Between pts 5-19-20, pg 48 we  
 dug down 110 cm below the wall at  
4. From 80 to 110 there were  
quantities of roof tile. In the corner  
pt 20 as shown on the plan we  
 came across a piece of pavement  
corresponding to that in the large  
room about 6. In its corner at  
24 were found (depth 50 cm,  
below wall at that point) a  
large jar (in fragments) and a  
yellow casting apparatus shaped  
like a cone, with a pierced  
top and a triangular opening in the  
side.

A terra-cotta plaque featuring  
a lion standing in a doorway  
was found at pt 3, pg 66, depth  
40 cm.

at the upper end of paved street  
pg 69, pt 17, a slab drain  
appeared as shown in diagram.  
The large terrace wall also returned  
well to the south - as shown.

76

A bronze coin was found at  
pt. 25 pg. 49, on the pavement  
of the room at that point.

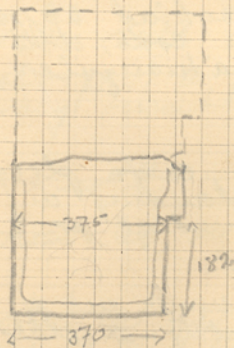
(32)

At pt 26 pg. 49, there appeared  
in the house of older period as shown  
by the plan, two jars in much  
damaged condition.

In digging down to the east of  
the main drain, about corner 2 of  
pg. 66 we came upon another  
wall, running at an angle toward  
the north; depth 50 cm. below 2.  
The wall is shown in the plan by  
cross shading.

On pt 27, pg. 48, a tile fragment  
with several letters as it was found  
apparently, (ABT)  
(11-). Depth 50 cm.

Fragment of  
marble  
epistyle  
found at  
pt 25, pg. 50.



According to  
the plan and  
a den jar.

May 20, Saturday

77

14 Workmen.

In charge of sections by the paved  
at end west end of stoa.

A bronze coin was found at pt. 26  
page 50, depth 20 cm. above  
wall at 17.

(38)

About pt 26, pg. 50. We continued  
to clear away the earth. Walls  
appeared as shown in the  
diagram. 400-350

The face of the terrace wall  
also appeared near pt 6  
pg 51.

May 22 Monday

In charge of central section of  
Platze. Terrace.

12 Workmen.

Coin 2 bronze coins were found at  
pt 27, pg 50 at depth of  
wall top directly west of that  
point.

133

134

400-350 An arrow head of bronze  
was found at pt 28  
pg 50, depth 70 cm!

Coin A bronze coin was found at  
pt 29, pg 50, depth level with  
threshold at this place.

142

400-350 Coin A bronze coin was found at  
pt 30, pg 50, at depth of 90 cm.  
Below wall at corner.

144

about points 29 and 30 pg 50, we  
dig down till a layer of lighter  
soil began to appear 20 cm  
below the threshold at 29. Some  
loose material was excavated  
immediately above this level.

The passageway about 31 was  
also carried down to approximately  
the same level.

Several vases and bits of finer  
ware were mingled with the  
coarse pots and tiles in both  
the sections mentioned above.  
(Taken to House)

In the square at 15, pg 50,  
there were a number of rough  
stones forming a bastion  
at a depth of 5-10 cm  
below the edge. The earth  
in the square was very red,  
and there were numerous  
traces of charcoal.

80. May 23 Tuesday.

No change of vertical section of  
terrace.

12 Workmen.

Coin of bronze coin was found at pt?  
42 pg. 50 depth level with earthen  
floor of wall at pt?

195 Photo No 3 on Roll  
350-300 view across pts 28, 31, 29  
25' from room of the large  
Pitnos pg 48, from east.

Photo No 4 on Roll to Scott.

Photos nos 5 and 6 Mass Eldridge.

By point 7, page 51, we cleared  
away more of the face of the  
terrace wall and disclosed a  
flight of stairs, as shown on the  
diagram.

Directly opposite the stairs  
there is a fringe in the terrace  
wall, and the stones to the east  
are much smaller.

C 93  
Photo No 1 on roll  
Terrace no 3, from Rocks at  
Terrace 2 above.

C 94  
Photo No 2 on roll  
Acropolis of Colophon from SSW.

Coin Bronze Coin pt. 34 pg 50 depth  
43 30 cm below well at pt 35  
121 Found with ~~also~~ burned material,  
350-300 and many shells. Also one  
terra cotta head.

The walls about pts. 32, 34, 35, pg 50  
appeared in the course of the  
afternoon. See plan.

Photo No 3 on Roll - Stairs and  
threshold by 6 + 7 pg. 51, from  
west. C 95

Photo No 4. to Scott. C 96  
A bronze coin was found in  
section of pg 33. 452 44

Bronze Coin found pt 36 Coin  
pg 50, depth 30 cm 141 45  
below earthen at 33

After 300

May 24 Wednesday

In charge of central section of terrace.  
11 workmen.

Digging continued at the lower end of the paved street. The cornering walls ran down as indicated on the plan pg 50. Continuing the slope of the later pavement of the street, there was a layer of hard packed soil mixed with bluish stone, indicating the street level.

At pt. 32, pg 50 a column drum, diameter 40 cm, height 46 cm, round, was found, at about the level of pt 32. See plan.

Coin a bronze coin found at pt 34  
46 pg 50, depth level with door jamb at pt 35.

(243)

In the rooms about pts. 34-36, pg 50 as far south as point 27, and down to the level of the wall at pt 32, practically the only pottery fragments or tiles found are those mentioned on page 80. Immediately south of wall from pt. 32 east, however, the pits formed a continuous fill from 20 cm. above level of pt 32, to 20 cm. below level of that point.

Coin  
47

(388)

Bronze coin found at pt. 38, pg 50  
depth. 125 cm below wall top at this point.

May 25 Thursday

In charge of central section  
of terrace  
11 workmen.

At point 39, pg 50 on level of threshold of the column, a large pot, entire lost in fragments was excavated - also a little lamp, with raised pattern on top (suit to house), and a small vase.

In corner of the room at pt 29, pg 49 a small pot was found directly on the paving of floor in a bed of charcoal.

Photo No 5 on Roll. Covered drain in front of area from the east.

C 97  
←

Considerable fairly large stone rubble removed from the east wall of Room 5 (p 32). Roof tile below it.

Handle of Iron Strigil from Room BB, c 70 below ground, pt 7 pg 32.

84 May 26. Friday

Same quantity of plaster fall  
from south wall in S. W. angle of stair  
(Point 16, p 48). Fall after W wall had  
disappeared. Plaster has ground coat  
made of sand (coarse) and limes, yellow  
and lime-pink in color, about 2 1/2 - 3 cm  
thick. Scored slightly with shallow  
depressions on surface. Second coat  
white sand and lime, about 5 millimeter  
thick, traces of red on surface. Final coat  
also coarse sand and white plaster about  
2 cm. thick, smooth white face.

In room BB (p 32) quantity of broken  
rooftiles about 1 m below carted surface  
(.75 m below top of wall)

Coin  
48 Room AA p 32 small Bronze coin  
Depth c 75 below top of wall Point 1 -  
(376) 350-

Broken tile in AA (p 32) at same level  
as in BB, beneath walk from Small

Coin  
49 Bronze coin Room AA p 32 Point 2  
Depth c 75 below top of wall (471)

Coin  
50 Dumpy coin Room BB p 32 Depth c 1 m  
below grade Point 3 (380)

Coin  
51 Bronze coin Room CC p 32 D depth  
c 5 cm below top of wall Point 4 (224)

Coin  
52 Bronze coin Room DD p 32, Depth  
c 10 cm below top of wall Point 5 (383)

85 May 27 Saturday - 93

At p 28 p 49 a bronze coin  
was found to N.E. of drain 30 Coin  
cm. away at a depth of 20 53  
cm. below top surface. It was (387)  
found in the best earth fill  
around the drain.

May 29 Monday

In charge of central section of  
3<sup>rd</sup> terrace.10 Workmen.

Photos 1-4 Personal

C<sup>99</sup> Photo no 5 in roll - Room AA pg 32  
7 from NE corner.C<sup>100</sup> Photos no 6 and 7 to Miss EldridgeC<sup>102</sup> Photo no 8, view from pt 8 across  
= 36 and 34; pg 50.C<sup>103</sup> Photo no 9, view of column at  
7 37 from corner by 33, pg 50.Between pts. 22 and 23 pg 50 a  
terra cotta representation of a warrior  
falling, an Amazon on a horse  
was found at depth of 50 cm.  
below corner of wall at 22.C<sup>378</sup> A bronze coin was found in  
section EE pg 82, depth  
level with top of walls. pt 6

May 30 Tuesday

In charge of central section of  
3<sup>rd</sup> terrace

10 workmen

At pt. 8 pg 32 the head of a loom in  
terra cotta was found, in the layer  
of broken pottery and small stones  
which probably was used as fill  
under the floor. Depth 30 cm.  
below top of wall at pt. 8.At point 40 pg 51, a terra cotta  
of clay figure (entire) was  
found at depth of 35 cm.  
below wall immediately south.In rooms AA, B, C, <sup>pg 32</sup> fragments of  
pottery were found from depth  
0-70 below wall tops in  
moderate quantities. Samples  
taken to laboratory.Several fragments of pottery  
with incised lines were  
found on the paved floor at  
point 41, pg 50. Taken to  
house.About pt. 29, pg 49, there are two  
walls immediately to the north  
which cross at a slight angle.  
The S.W. - N.E. one of the two is  
the older and is  $\perp$  to wall  
29 and all to wall 30. Wall  
29 continues also to the  
north of the cross wall. The  
other walls are later but  
earlier than the stoa.

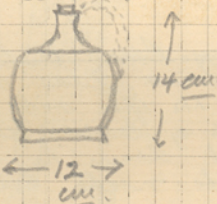
May 31, Wednesday

In charge of central section of 3<sup>rd</sup> tunnel

14 Workmen.

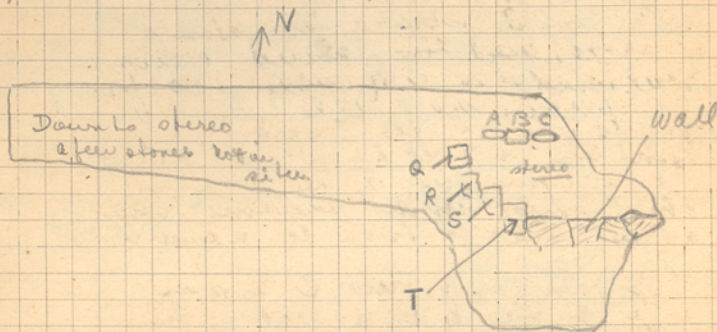
C<sup>104</sup>7 Photos 10 and 1 to Miss  
EldridgeC<sup>109?</sup>In cleaning the area directly north of the  
olive tree a stairway appeared as  
shown on the plan, pg. 50.C<sup>110</sup>Photo no 2 - of Stairway by the  
olive tree from North-West.At pt 14 pg 50 parts of a  
terra cotta figurine were found  
at depth of 135 cm below  
corner of wall at pt 16. Several  
base fragments were also  
found at the same point.

June 1, Thursday

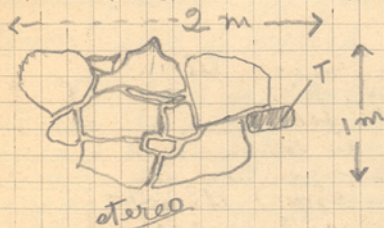
In charge of central section  
& workmen.Above the olive tree the wall  
developed from 10 around to  
16 at station in the diagram  
pg. 50. In the enclosed area  
we dug down finding only  
fragments of lamp parts and  
wood tiles mingled with the  
soil to a depth of 100 cm.  
below top of stairway.Toward the north end of paved  
street area we opened the trench  
out to the north. Walls developed  
as shown about points 42 and  
43, pg 50. At pt 42 a wall was  
found at depth of 25 cm. below  
top of wall.At point 43 pieces of a large  
terra cotta plaque were  
found, at depth level with top  
of wall at that point.A bronze coin was found at pt Coin  
42, pg 50, depth 30 cm. below  
wall at that point. (377) 55-A small saucer was found at  
pt 44, pg 50, depth 180 cm.  
below wall at that point  
(broken to base).

April 24 Monday.

In trench III we dug down below what appeared to be the wall bisecting the eastern end of the trench and found the real line of the wall, which followed very closely the line of the tumble blocks mentioned above.



South elevation of wall shown in above sketch.



We dug down to stones below the wall and then proceeded to clear the face toward the west.

Stone T as shown in the diagram

above projected at st. angles to the wall for 20 cm. and was bound into the wall, whether intentionally placed so or displaced as a result of thrust from above was not clear. Stones Q, R, and S were thrust still farther forward in schelon and were not tied in. Below Q, R, and S, were a few stones of shale, and then stones, which consisted here of a shale formation. The tumble from above, marked rocky fill in the diagram of April 22, seems to point toward a bulging out of the wall at this point under pressure from above rather than to a lower.

Stones A, B, and C appear to be a line of wall resting on stereo. There is no continuation of the line, however, west of A. We removed some of the stones from immediately in back of the stones. In front of them (to the north) we found some shreds of coarse, soft, red ware.

To the east of trench III we opened about 9:30 a. m. another trench, to follow the line of the wall discovered in trench III. In the upper layers (0-35 cm. diam. app.) the soft rough, red ware predominated. We went down only outside the wall. Four of five small fragments of classical black glaze ware appeared.

Continuation  
of III.

June 2, Friday

In charge of central section of terrace  
8 men

C<sup>III</sup> ✓ Photo no. 3 on wall view of  
section about point 42, pg 51  
from N.E. corner of the room by  
Aldridge Street.

Photo no 4 to him Aldridge

C<sup>IV</sup> ✓ Photo no 5 Across wall to 42  
point 135 pg 51  
19 20

C<sup>III</sup> ✓ Photo no 6. Stairway beyond  
pt 14, pg 50 from point 21.

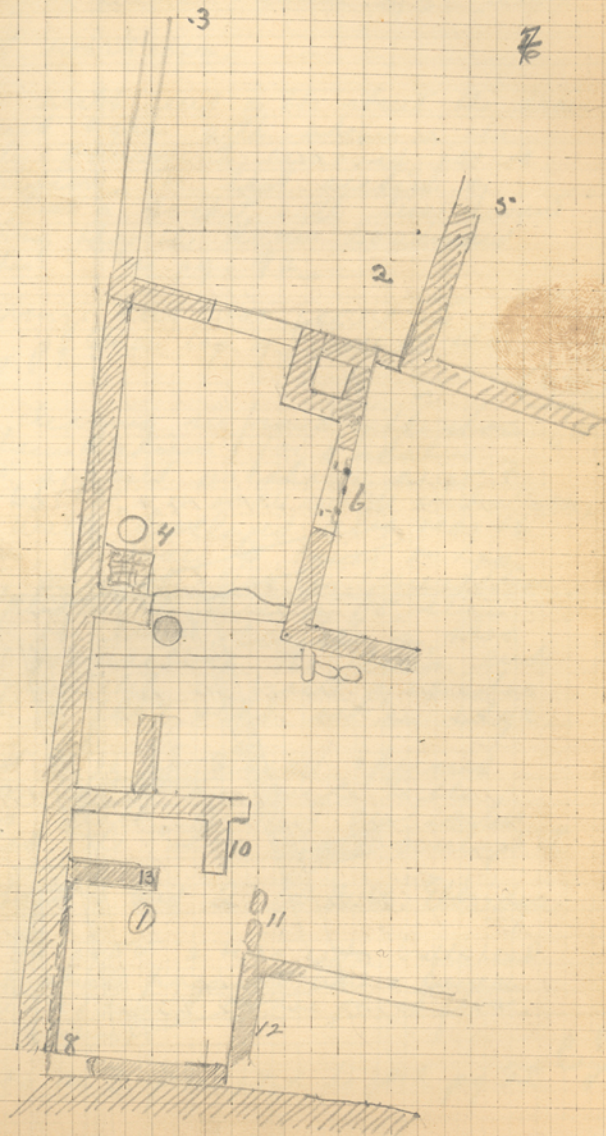
We opened the trenches further to the  
north on the north end of the street  
pg 50, 92.

Also we dug down in room 1,  
pg 91. There was a great deal of  
loose rubble on the open side of the  
room and pieces of loose tile and  
pots were found down to level of  
80 cm. below the north east  
corner.

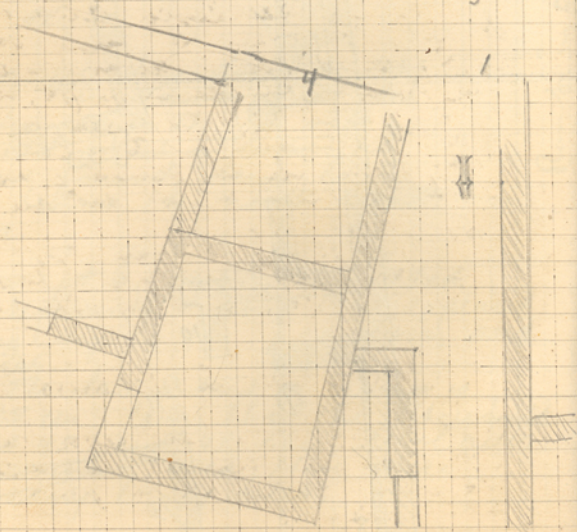
About pt 6, pg 51. The dotted  
area represents a ramp that appeared  
leading up to the platform and  
the stairs.

The lower end of ramp is  
app. 25 cm. lower than the threshold  
at pt 45 and at this level over  
the intervening area there were  
very many roof tiles.

Western side of Page 50-51  
Scale 1 block = 50 cm



North End of Street pg. 50  
Scan 1 block = 50 cm



June 3, Saturday

In charge of central section of 3<sup>rd</sup> terrace  
& workmen.

At the north end of the street the drain  
appeared again with above of the  
early pavement removed for its  
inspection. The last section of  
tile has a socket with lime cement  
showing that the drain continued  
further. - See pg. 92.

A bronze coin was found at  
pt. 4 pg. 66 on top of wall at that  
point.

Coin  
56

423

In cleaning in front of the shop  
the foundations for a stater  
base appeared as shown at pt. 7  
pg. 66. It is of small rubble construction,  
walls developed also near the  
drain, the wall 5 being on top  
of 3, and the circular foundation  
of 6 above the level of 5, even  
with the lower course of shop  
wall foundations. The drain ends  
immediately in front of the shop  
with a flat slab set on edge.

At pt. 8, pg. 66 a wall appeared  
emerging at an angle to the  
shop wall, and of an earlier  
period. The shop wall overlaps it.

Photos 1 and 2 to Miss Eldridge.

At pt. 46 pg. 50 a terra cotta bull's head  
and a small fragment with a human  
head were found on the paved floor.  
(Taken to house).

Photo no 3. from pt. 2 to pt. 1. pg. 92

C 114  
✓

94 June 5 - Monday

In charge of central section 93<sup>rd</sup> terrace.

9 Workmen.

In cleaning the room shown on pg. 31, walls developed as shown by M and N in the diagram.

The whole room, as part of the stoa has its walls well built of unworked one and two man stones. The west wall on the outside is the outer wall of the stoa and so built of the large blocks of that structure (as shown on plan). Along the inner face of this wall at a depth of 45 cm below the permanent mark on the wall (which is itself 289 cm below the base point at the bema) runs a built up ledge of one man stones. The floor level of the stoa was above any of the preserved walls.

In the room is the current pavement shown by Q in diagram. At 3 corners of it are built stone pillars resting on a layer of earth 2 cm thick on top of the pavement.

The system of walls MOR has an apparent floor level by the large stone 10, where the drain is cut away on one side for the reception of another light. The same level appears at point 3 as a strata of fine chips of stone and lime very hard packed. It also shows in the

95

stratification on the side of the trench at 6 is a whitish sandy layer with small particles of stone intermingled. It is 20 cm below the heavier paving above.

The wall N runs under the wall by the drain, where only one layer of stones of the upper wall is preserved. These walls are all built of one man stones.

The south wall of the whole room has large stones on the outside and makes a thorough joint at the corner 5, where the further wall of the whole stoa makes a corner for three courses down (we dig no further).

East elevation of corner at 5

