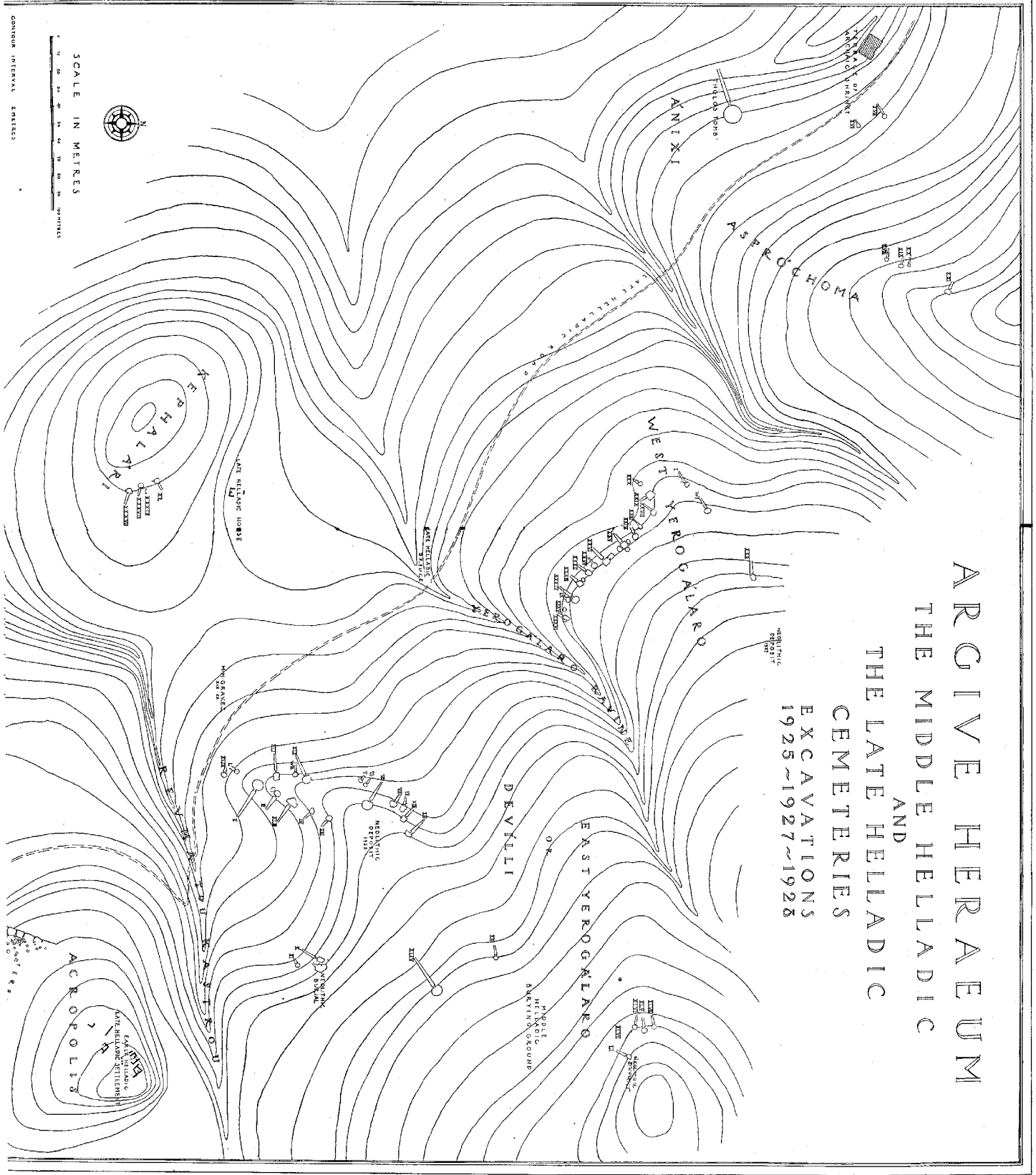


ARGIVE HERAEUM

THE MIDDLE HELLADIC AND THE LATE HELLADIC CEMETETERIES

EXCAVATIONS
1925-1927-1928



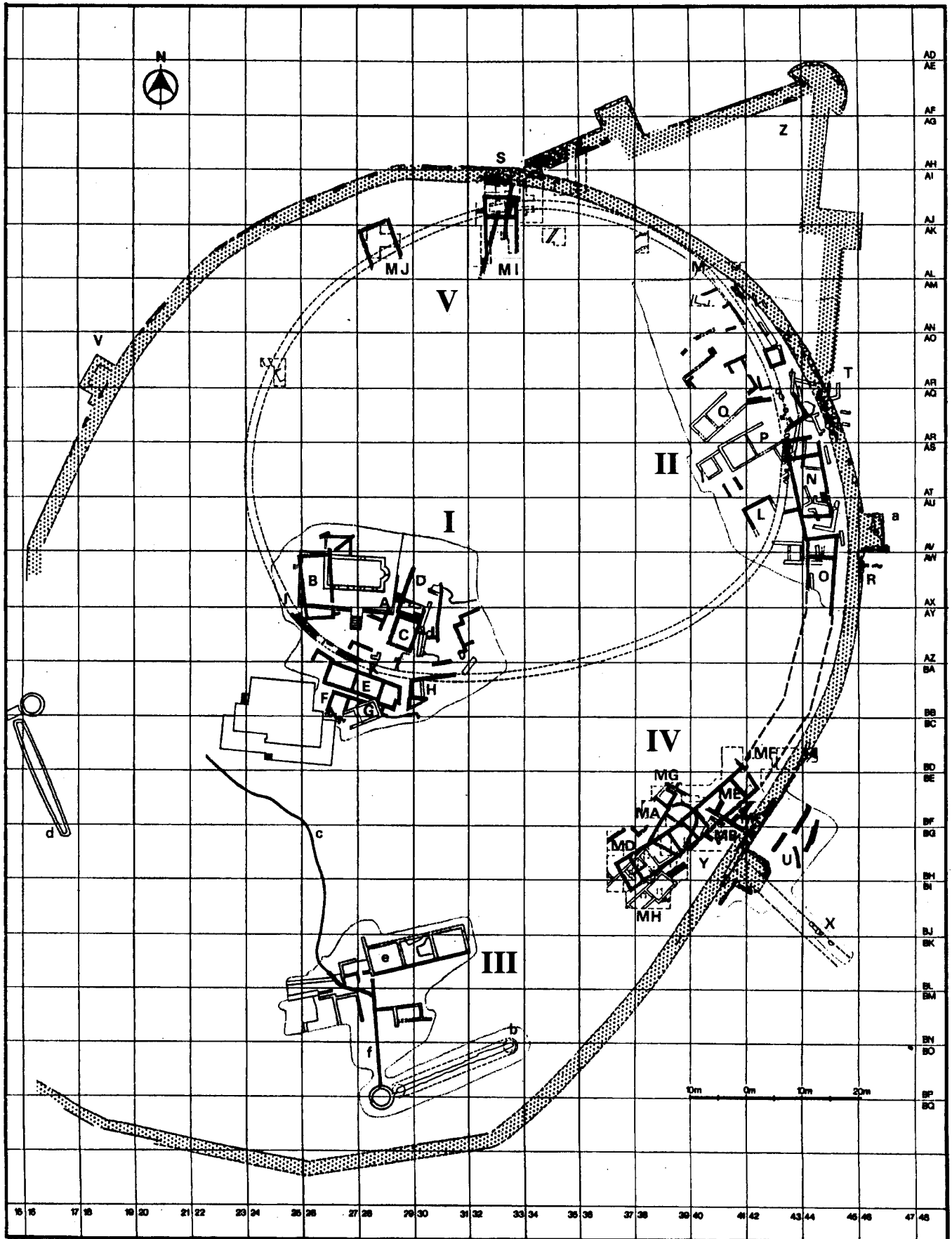


Fig. 1 Argos, Aspis Map of the site

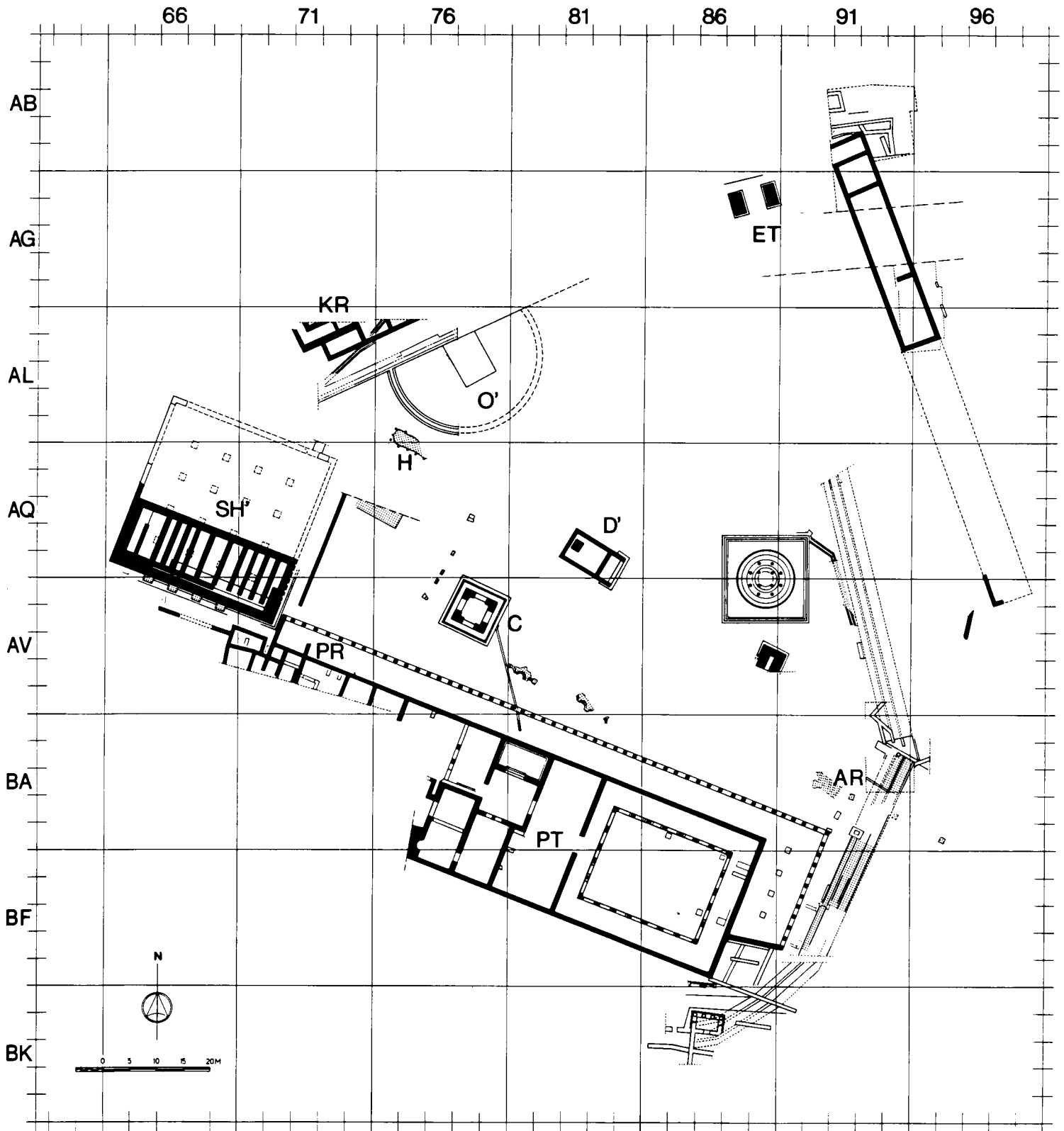


Fig. 5. — L'agora pendant le Bas-Empire.

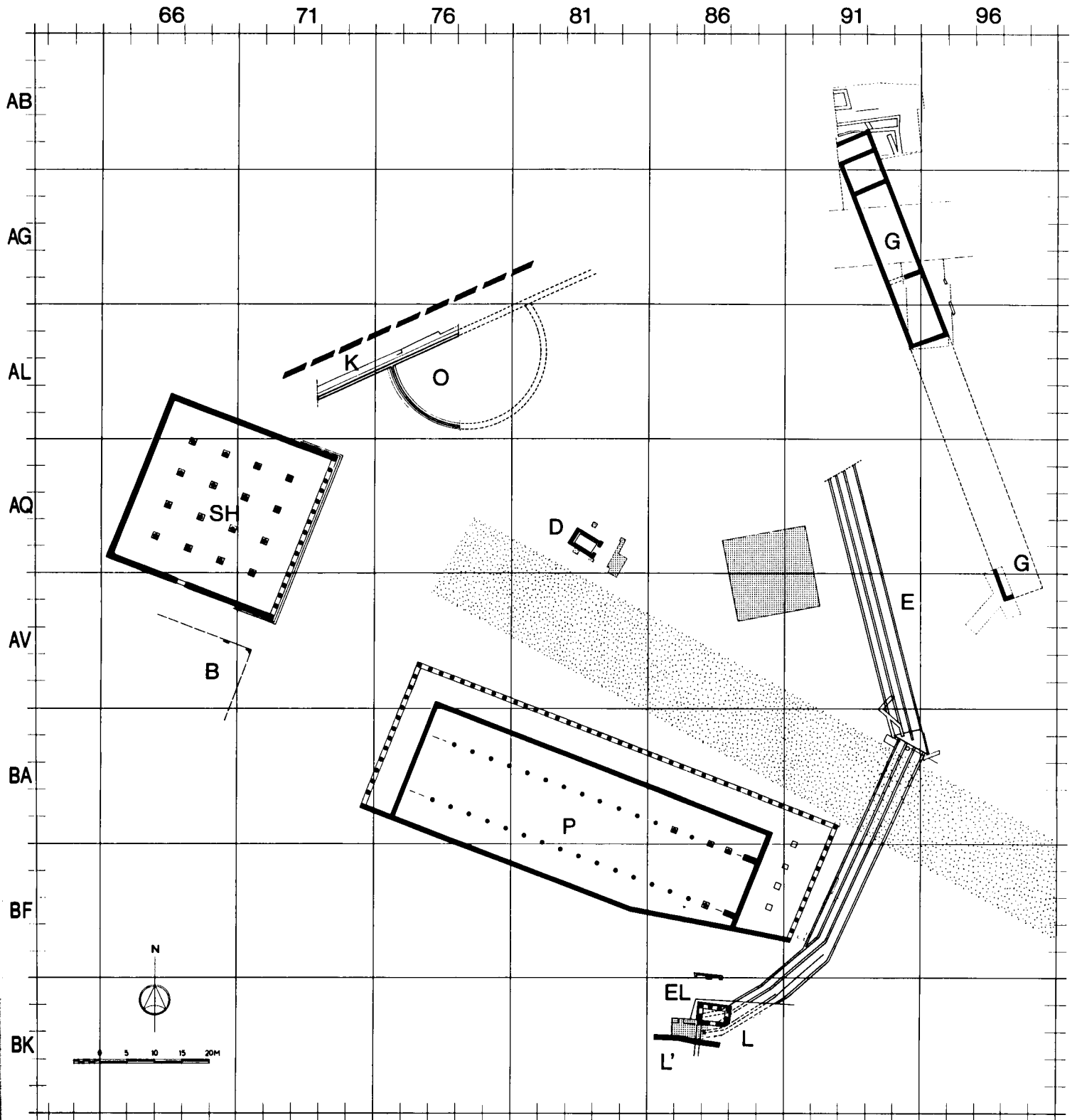
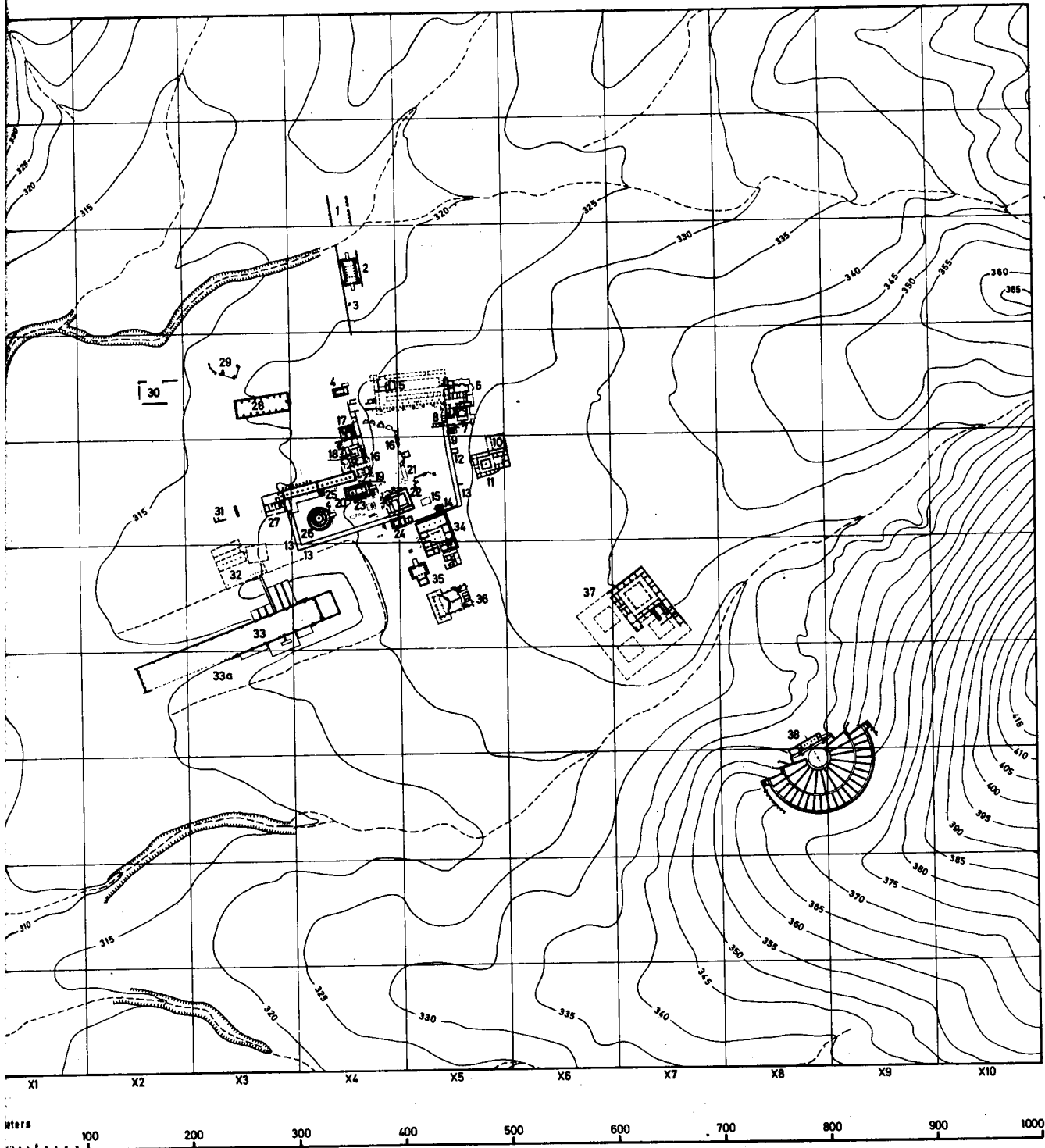


Fig. 3. — L'agora aux époques classique et hellénistique.

Sanctuary of Asclepios - Epidauria (146 B.C. - 395 A.D.)



- 1 SACRED WAY
- 2 PROPYLAIA
- 3 WELL
- 4 TEMPLE OF THEMIS
- 5 STOA (OF KOTYS ?)
- 6 BATHS (AKOAI ?)
- 7 EPIDOTEION
- 8 "SACRED FOUNTAIN"
- 9 "DORIC FOUNTAIN"
- 10 ANAKEION
- 11 HOUSE
- 12 TOWER

- 13 DEFENSIVE WALL
- 14 HYPAETHRAL SANCTUARY
- 15 PLATFORM
- 16 VOTIVE OFFERINGS
- 17 LIBRARY
- 18 BATHS
- 19 SACRED WELL
- 20 TEMPLE OF ASCLEPIOS
- 21 ALTAR OF ASCLEPIOS
- 22 BUILDING E
- 23 ALTAR OF APOLLO (?)
- 24 TEMPLE OF ARTEMIS

- 25 ABATON
- 26 THOLOS
- 27 ANNEX TO THE ABATON
- 28 RESERVOIR
- 29 TEMPLE OF ISIS (?)
- 30 UNIDENTIFIED BUILDING
- 31 PART OF WATER SUPPLY SYSTEM
- 32 PALAISTRA (?)
- 33 STADION (33a KOILON)
- 34 "PALAISTRA" OR TEMPLE OF THE "EGYPTIAN"

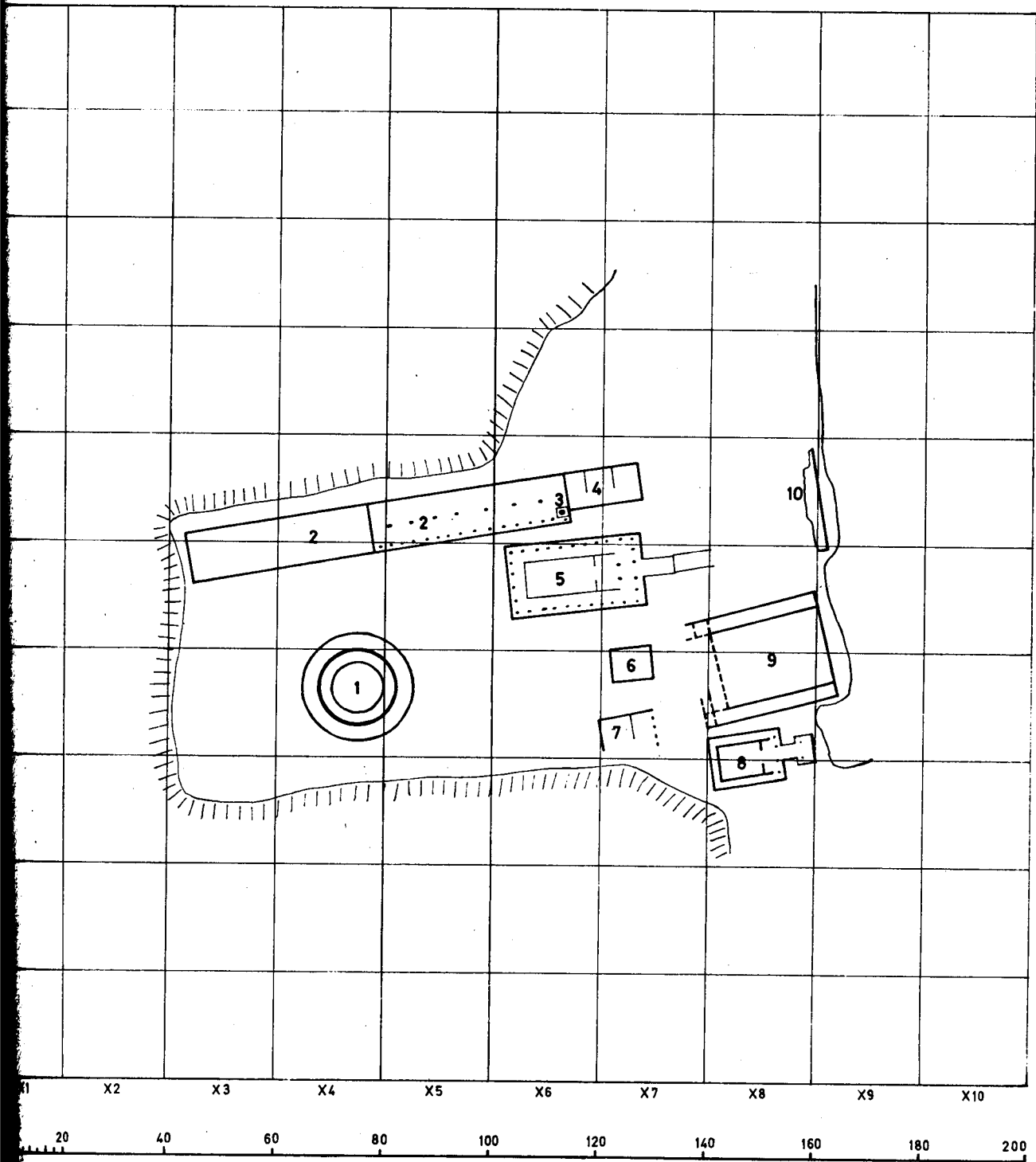
- 35 APOLLO & ASCLEPIOS
- 36 TEMPLE OF HYGEIA
- 37 ODEION
- 38 KATAGOGION (GUEST HOUSE)
- 39 THEATER

— BUILDINGS EXISTING DURING THE PERIOD
 BUILDINGS DESTROYED DURING THE PERIOD

Based on plan by G. Roux, L'architecture de l'Argolide, 1961, Pl. 26, archaeological data by N. Faraklas and maps 1:5,000 of the Hellenic Army Geographical Service
 D-AGC-1788

ANCTUARY OF ASCLEPIOS - EPIDAURIA (4TH CENT. B.C.)

IN AREA



1 WELL
2 DORMITORY
3 SACRED WELL
4 TEMPLE OF ASCLEPIOS
5 TEMPLE OF ARTEMIS
6 WORKSHOP
7 TEMPLE OF ASCLEPIOS
8 TEMPLE OF ARTEMIS

9 BUILDING E
10 ALTAR OF ASCLEPIOS

---- PRESUMED PARTS

on a sketch by A. Burford, The Temple Builders at Epidaurios, 1969, fig. 5.

D-AGC-1756

RESEARCH PROJECT: ANCIENT GREEK CITIES

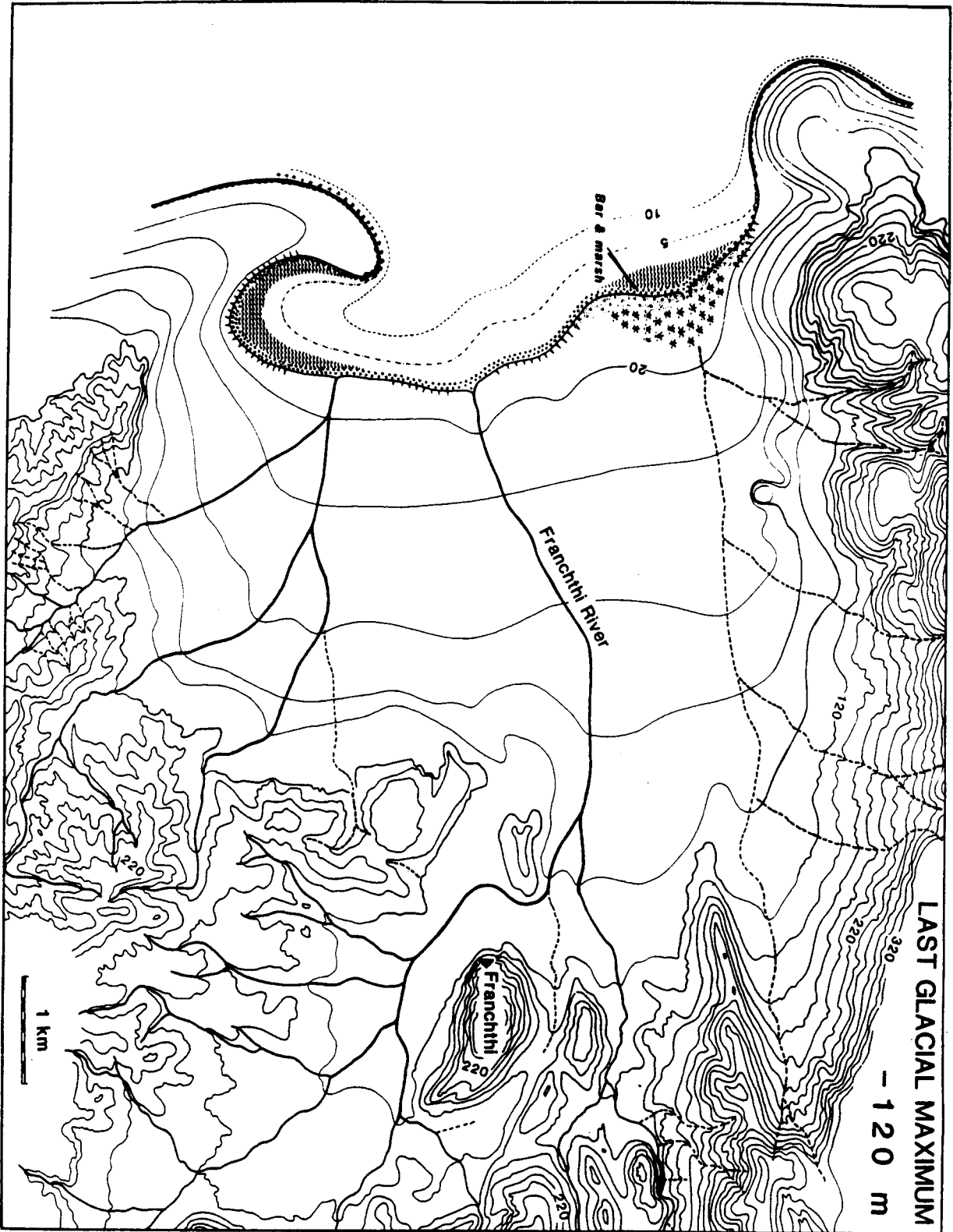


Figure 13. Shores of the Franchthi embayment during the last glacial maximum. Elevation contours labeled in meters above sea level at that time. Legend on Figure 12.

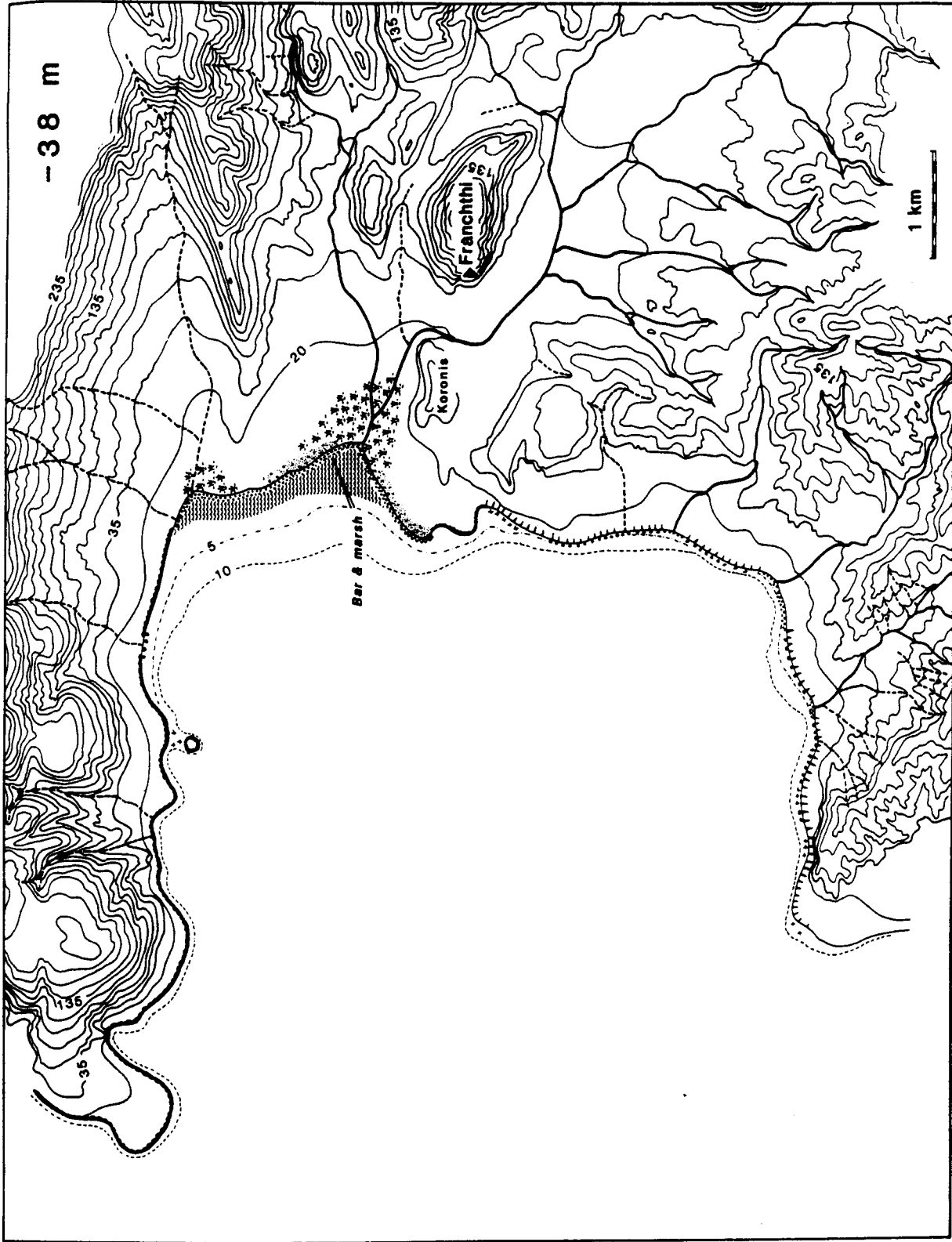
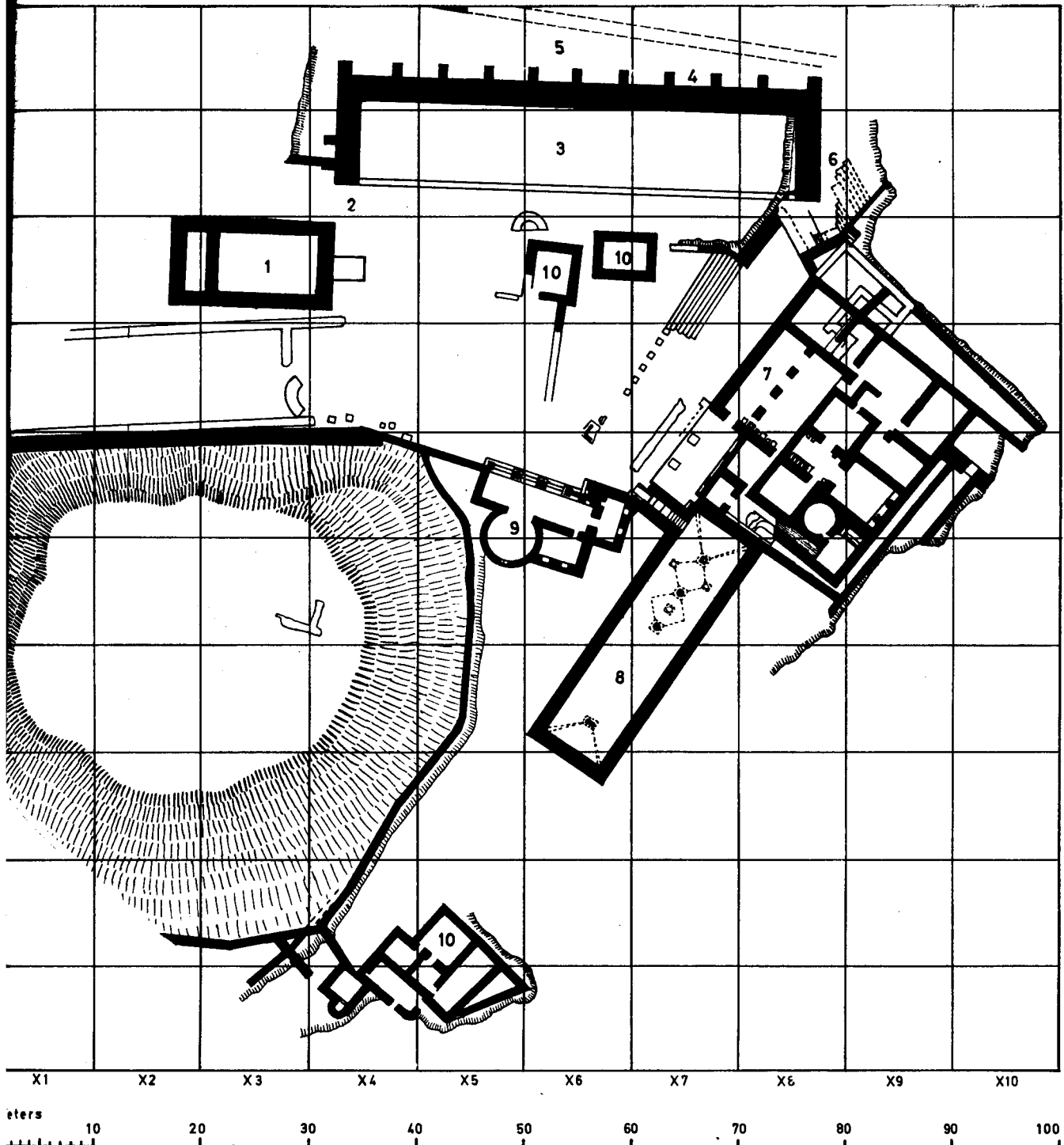


Figure 16. Shores of the Franchithi embayment when the sea stood at -38 m, probably about 9,500 or 9,000 B.P. Elevation contours in meters above sea level at that time. Legend on Figure 12.

ANCTUARY OF APOLLO MALEATAS - EPIDAURIA (ROMAN PERIOD)



TEMPLE OF APOLLO
ALTAR
STOA.
RETAINING WALL
STREET
STAIRCASE
"SKANA"
CISTERN
FOUNTAIN

10 BUILDING OF UNKNOWN
PURPOSE
EXCAVATION BOUNDARIES