

GREEK INSCRIPTIONS FROM THE ATHENIAN AGORA

(PLATES 85-88)

I publish here a group of fifth-century texts from the Athenian Agora which, although they have not previously been published, seemed to deserve inclusion in the forthcoming *editio tertia* of *Inscriptiones Graecae* I. I am grateful to Professor Meritt for permission to publish them both here and there and for giving me access to notes made on them by him and others.

1 (Pl. 85). Fragment of Pentelic marble, broken on all sides, found on February 28, 1935, in a modern context east of the South Square at its northeast corner (P 13). The top was originally reported as preserved, but it does not look original to me.

Height, 0.109 m.; width *ca.* 0.095 m.; thickness 0.079 m.

Height of letters, 0.011 m. Lines 2-5 were cut in a stoichedon pattern, roughly measurable as a vertical checker of 0.0175 m. and a horizontal checker of 0.014 m.

Inv. no. I 2545.

ca. a. 430 *a.*

ΣΤΟΙΧ.

[----- ἐγρ]αμ[μάτευε]
 [ἔδοχσεν τῷ βολέῃ καὶ τοῖ δέμ]οι · Κε[κροπὶς ἐπρ]
 [.....²⁴.....]ΣΕΡ/[--
 [.....²³.....]ν ηι π[--
 5 [.....²³.....]ρι[---

The main interest in this fragment is that it is attributable, as Meritt saw, to the stone-cutter discussed by H. T. Wade-Gery, *B.S.A.*, XXXIII, 1932-1933, pp. 122-134. I take the following from Meritt's notes: "In line 1, the side strokes of mu are cut with a 12 mm. chisel, the middle strokes with one of 8 mm. In the main text, uprights are 11 mm., all strokes of sigma are 8 mm., horizontals of alpha, epsilon and the aspirate and the diagonals of kappa are 6 mm." Here, as in two other cases noted by Wade-Gery, the heading was cut in slightly larger letters. Wade-Gery dated the activity of the cutter around 430 B.C., and no contrary evidence is yet known.

Restoration is, however, extremely difficult. There are two complicating factors. First, the right edge cannot be precisely fixed, though it is unlikely to have gone much further than the last letter of line 1, and I would doubt whether the line was longer than the 37 letters I have given line 2. But there is uncertainty, and I have preferred to show the number of the letters missing on the left rather than to extend

Hesperia, XLIV, 4

ἐπρυτάνευε into line 3, where it certainly went. Second, the reading in line 3 is difficult. Meritt originally read a diagonal as part of a fourth letter, and I have come eventually to agree that this is the only possibility, though no trace of a stroke remains. Iota would show at its top, and chi, which would allow]ς ἐρχ[ε, cannot, I now think, be read. We therefore need to restore line 3 with a short name followed by ἐγραμμάτευε, followed by the name of epistates in which the combination σερα, σεργ, or σερδ (not, I think, σερμ) comes fairly early. I have found no name likely to be in fifth-century use which meets this requirement.

2 (Pl. 85). Fragment of Pentelic marble, broken on all sides, found on May 7, 1937, in a late context below the Klepsydra (S-T 27).

Height, *ca.* 0.06 m.; width, *ca.* 0.145 m.; thickness, 0.006 m.

Height of letters, 0.009 m., in an almost square checker pattern, 0.012 m. each way.

Inv. no. I 4813.

ca. a. 435-405 *a.*

ΣΤΟΙΧ.

--]ἐάν τι[ς----

-- [.ι ιδιώτες]

One's first thought is for a restoration modeled on *I.G.*, II², 43, lines 51-53, and the nearly certain parallel in *I.G.*, I², 58, lines 1-2: [καὶ] ἐάν τι[ς εἰπῇ ἐπιφροσύνη, ἐ ἄρχον] ἢ ιδιώτες, but this will not do, since it involves mixed spelling, a slip in the stoichedon order, and it is in any case likely that the left hasta of the eta would also show on the stone. The only reasonable interpretation of the first stoichos in the second line is that two iotas shared the space, and ιδιώτες was therefore preceded by [κα]ι. So we have some sequence of thought like that presented by *I.G.*, I², 110, lines 44-47 (I give the text as it appears in Meiggs and Lewis, *Greek Historical Inscriptions*, no. 85, with a change of accent):

τ
[ὅς δὲ βολευτὰς τὸς] παρόντας ἀποφαίνειν ^τhá[ττ']
[ἂν εἰδῶσιν, καὶ ἐάν] τις ἄλλο εἰδῇ περὶ τ[ού]
[τον· ἐχσέναι δὲ καὶ] ιδιώται, ἐάν τις βόλεται[ι.]

Here we will have [ἀποφαινέτο δὲ κα]ι ιδιώτες, or something like it.

I have not recognized the hand.

3 (Pl. 85). Fragment of Pentelic marble, broken on all sides, found on May 7, 1937, in late road packing west of the Klepsydra (S-T 27).

Height, 0.057 m.; width, 0.062 m.; thickness, 0.036 m.

Height of letters, 0.009 m.

Inv. no. I 4816.

ca. a. 425-405 a.

[--- καὶ] θέναι [ἐμ πόλει.]
vacat

I know this fragment only from squeeze and photograph. We are at the end of the text, which makes the restoration at least probable.

4 (Pl. 85). Fragment of Pentelic marble, with left side only preserved, found in May 1934 in a marble pile in the Tholos area.

Height, 0.11 m.; width, 0.03 m.; thickness, 0.03 m.

Height of letters, 0.008 m., save line 4, which is 0.01 m. Vertical spacing, about 0.014 m. for each line.

Inv. no. I 1981.

a. 432/1 a.

--
ι[
σ[
ο[
Τ[
5 α[
--

The only clue for identification of this fragment seemed to be the larger letter or numeral in line 4. Such sudden transitions to larger letters are characteristic of such texts as the expense accounts of 432/1 and 431/0, discussed by B. D. Meritt, *Athenian Financial Documents of the Fifth Century*, Ann Arbor (Mich.), 1932, pp. 71-86, and in fact the rather unusual small sigma turns out to make a good match with some of the sigmas in the account of 432/1. Compare in particular the sigmas towards the bottom of Meritt's figure 13 on page 77. The vertical spacing is however distinctly closer than that of the preserved parts of that account, which runs at 0.016 m. or a little more, but there is much about the arrangement of that account which is still obscure, and I do not think it impossible that the spacing became closer towards the bottom.

5 (Pl. 85). Fragment of Pentelic marble found during landscaping operations in December 1962 in area N-P 7-13.

Height, 0.08 m.; width, 0.05 m.; thickness, 0.025 m.

Height of letters, 0.009 m. Vertical checker, 0.0135 m., horizontal checker, 0.0115 m.

Inv. no. I 6970.

?a. 405/4 a.

--- ἰδος πρ]υτᾱ[νεύοσης --
 --- ...⁶...]εἰ τ[ἔς πρυτανείας
 --- ..πρυτ]ανε[-----
 --- ...⁶...]ΠΗΗ-----
 5 --- ...⁶... ΠΛ-----

This may well be a fragment of the accounts of the Treasurers of Athena for 405/404 B.C., last studied by A. M. Woodward, *Hesperia*, XXV, 1956, pp. 109-121. Unless a join is found, it will not assist much with that difficult document, and I have judged it more prudent to give it a separate number in *I.G.*, I³.

6 (Pl. 85). Fragment of Pentelic marble, broken on all sides, found on February 16, 1937, in a late Roman context beneath Acropolis Street, east of the Post-Herulian Wall (T 24).

Height, 0.09 m.; width, 0.07 m.; thickness, 0.065 m.

Height of letters, 0.008 m.

Inv. no. I 4519.

a. 407/6 a.

ΣΤΟΙΧ.

[....]πρ[---]
 vacat 0.029 m.
 ἐπὶ τῇ[ς -- ἰδος -- πρυτανεὺς]
 ὑπ[ε]ς [-----]

The strong similarity to *I.G.*, I², 374 R (= *The Erechtheum* [J. M. Paton, ed.], Cambridge [Mass.], 1972, Inscription no. XX) in lettering and arrangement makes it clear that we have here the end of the account of one prytany and the beginning of another in those accounts of the Epistatai of the Erechtheum which were inscribed, not on stelai, but on revetment slabs. It does not however complete the text of *I.G.*, I², 374, line 343, for the letters are microscopically larger, the traces in line 3 do not fit the necessary restoration of that text, and for conclusive physical reasons. The old fragment has a dressed top, with a dowel for attaching it to another slab, only 0.025 m. above the first line of the inscribed text, whereas this fragment would protrude well above that line and has a further inscription on the same slab.

I.G., I², 374 R refers to the tenth prytany of a year which has always been taken, probably rightly, to be 408/7. Our new fragment has no similarity to the accounts of Prytanies VI-IX of 408/7, and, whereas it is theoretically possible that it might belong to the accounts of Prytanies I-V, for which our only, very dubious, evidence is *Erechtheum*, Inscription no. XVIII, assigned by Dinsmoor and others to Prytany V, it seems more likely that it belongs to a prytany later than the tenth prytany of 408/7, where this lettering is first attested, that is, to some time in 407/6.

The consequence would be that those fragments of the Erechtheum accounts in Ionic letters which are still accepted as fifth century will have to be moved on somewhat. These are *The Erechtheum*, Inscription no. XXIX (*I.G.*, II², 1655) and *Hesperia*, VII, 1938, pp. 268-269, no. 3 (*S.E.G.*, X, no. 300).¹ This raises no difficulty.

The form [πρυτανενο] | ὕσ[ε]ς is unparalleled in these accounts, but seems inevitable. Our inscription begins ἐπὶ, as in *I.G.*, I², 374, line 115 (Prytany VII), and not ἡεπὶ, as in line 185 (Prytany VIII) and line 271 (Prytany IX). Spacing seems to me to demand [ἐπὶ] in line 343 (Prytany X), and this will be true whether the restoration is [ἐπὶ τῆς Ἐρεχθεῖ]δος as held by general opinion or [ἐπὶ τῆς Ἀντιοχί]δος as required by W. K. Pritchett (*B.C.H.*, LXXXVIII, 1964, pp. 467-468, *The Choiseul Marble*, pp. 24-25). If it should turn out that this fragment also belongs to 407/6, the situation will be more complicated.

7 (Pl. 86). Fragment of Pentelic marble, broken on all sides, found on June 2, 1938, in filling behind the parapet wall of the Klepsydra (T 27:1) in a context of the mid-first century B.C. (cf. A. W. Parsons, *Hesperia*, XII, 1943, pp. 240-241).

Height, 0.073 m.; width, 0.07 m.; thickness, 0.076 m.

Height of letters, 0.008 m.

Inv. no. I 5497.

a. 408/7a.

vacat 0.042 m.

]τον π[

Non-ΣΤΟΙΧ.

]ΓΗΤ[

The excavators had no difficulty in recognizing this as a part of the Erechtheum accounts for 408/7. I leave it to others to explore the consequences for the history of the inscription posed by its context. I have failed to place the fragment. The contents of line 1 and the vacant space above it, greater than that above line 2 of No. 6, show that it is not the beginning of the account of a new prytany. It must therefore fall right at the top of a column, on one of the top row of revetment slabs. It cannot be combined with *The Erechtheum*, Inscription no. XVI, col. I, to which a new fragment was joined on the left, by Dow and Meritt, *A.J.A.*, XXXVIII, 1934, pp. 69-70 (*S.E.G.*, X, 283), nor with Inscription no. XX, col. II, which has smaller taus and larger omikrons, besides textual difficulties, nor with Inscription no.

¹ The claims of the two fragments, *The Erechtheum*, Inscriptions nos. XXVII, XXVIII (*I.G.*, II², 1654) to be fifth century are once again disputed by W. E. Thompson, *Hesperia*, XXXIX, 1970, pp. 56-57. To me, they seem clearly to belong to the period 380-370, with close parallels to the lettering in *I.G.*, II², 1415 and 1426. The claims of *Hesperia*, IV, 1935, pp. 162-163, no. 20 (*S.E.G.*, X, 301) to be fifth century are better; its claims to be an Erechtheum fragment are slight.

XV, where there are textual difficulties, even if the fragment were placed to avoid the heading. There is no help that I can see from the content.

Homer Thompson contributes the following note on the significance of the context in which fragment No. 7 was found: The piece comes, as noted above, from a closed deposit within the Klepsydra, the ancient fountain house on the northwest shoulder of the Acropolis (*Hesperia*, XII, 1943, pp. 240 f.). The accompanying material (pottery, amphora handles, coins) is of the first two or three decades of the first century B.C. The inscription had evidently suffered about this time, and the presence of a mass of broken hydraulic cement points to additional damage. The cause of the destruction is indicated by the discovery in the same fill of a number of sling bullets and arrow heads of Hellenistic types. One need not hesitate to believe that the occasion was the siege of the Acropolis by Sulla in 86 B.C. (Plutarch, *Sulla*, 14; Appian, *Bellum Mithrid.*, 39; Pausanias, I, 20, 7). To the same occasion, in all probability, is to be referred the damage that necessitated the extensive repairs of Roman date in many parts of the Erechtheion (*The Erechtheum*, pp. 75, 178-180, 223 f., 478 f.). These repairs may be dated in the time of Augustus because of the similarity in workmanship between them and the Temple of Rome and Augustus which was erected soon after 27 B.C. Moreover, a cornice block from the Erechtheion is reported to have been found by the excavators of the Temple of Rome and Augustus re-used in its foundations. Some time would seem to have elapsed between the damage and the repair of the Erechtheion since there are indications of temporary protective measures in the temple (*The Erechtheum*, pp. 178-180). Hence a date in 86 B.C. would suit the evidence relating to the damage of both the Erechtheion and the inscription represented by No. 7, and their common fate is readily explicable on the plausible assumption that the inscription relating to the construction of the temple had been set up in close proximity to the building.

8 (Pl. 86). Fragment of Pentelic marble, broken on all sides, found on May 11, 1937, in a late wall over the Post-Herulian Wall south of the Eleusinion (T 20).

Height, 0.063 m.; width, 0.04 m.; thickness, 0.019 m.

Height of letters, 0.007 m. Checker pattern roughly 0.0106 m. vertical, 0.0093 m. horizontal.

Inv. no. I 4851.

a. 408/7 a.

ΣΤΟΙΧ.

--

]λα[

]δε[

]ηοικ(όντι)[

]παρὰ Ἀ[

5]σαντι[

--

This fragment has apparently been mislaid and I know it only from squeeze and photograph, but I see no reasonable doubt that this too is a piece of the Erechtheum accounts for 408/7 B.C. It is particularly close in spacing and lettering to *I.G.*, I², 374 Q (*The Erechtheum*, Inscription no. XIX) and, just as a cut has gone vertically through a column of letters on the right of that fragment, so here it has gone through a column on the left of the fragment. Presumably it is the same cut.

In line 1, I prefer to read a lambda with a flattish bottom stroke in the belief that other strokes of epsilon would show. I see no interpretation of the first letter of line 2 but an uncomfortably high delta. The alternative for the third letter of line 2 is pi.

I note that the disposition of letters on the old fragment is wrongly shown both in *I.G.*, I², where it is even described as non-stoichedon, and in *The Erechtheum*. Scratches have been taken as letters, though it is clear in both lines 1 and 2 that we are at the start of the column. Read:

		ο[----- δυοῖν δρ]
		αχμαῖν ἡ[έκαστον ----- ἐμ]
		Μελίτει [ῥοικ(ὄντι) ----- πετά]
		λος χρυσ[ὁ -----]
(337)	5	μενον χα[-----]
		λιον ἡελ[-----]
		χαλκῶν δ[----- ἐ]
		[μ]Μελίτ(ει) ἡ[οικ(ὄντι) --- ὀφθ]
		[α]λμὸ τὸν [κίονον -----]
(342)	10	[.χ]ρυσος[-----]
		[...]νο[-----]

9 (Pl. 86). Fragments of Pentelic marble, with the left edge preserved, otherwise broken, found on April 7, 1936, in a late Roman context, west of the Stoa of Attalos near the north end (P 8).

Height, 0.082 m.; width, 0.052 m.; thickness, 0.067 m.

Height of letters, 0.007 m. The stoichedon pattern measures 0.0133 m. vertically, 0.0083 m. horizontally.

Inv. no. I 4002.

ca. a. 430-405 a.

traces

ΣΤΟΙΧ.

ν ἡο οο[

ο τῆς [

αχα[

5 τει[

--

This is not the stoichedon pattern of a decree. The nearest example of such disproportion with such small letters I can find in a fifth-century decree is in *I.G.*, II², 55, which measures 0.0124 m. vertically, 0.0082 m. horizontally, and has very unusual lettering indeed. So I am inclined to discard such restorations as *ho* Ὁθ[όριος or *ho* Θό[ριος and to think again of the Erechtheum accounts of 408/7. But there, though I find similar spacing, I cannot match the lettering or find very attractive restorations. [ἀπὸ τοῦ βομ]ὸ τῆς [Διόνες] is hardly the only conceivable restoration for line 3, and the χά[λκας] which make so frequent an appearance in that text are generally preceded by a numeral and never by alpha.

10 (Pl. 86). Fragment of Pentelic marble, broken on all sides, found on May 10, 1939, in a marble pile in the area southwest of the Eleusinion.

Height, 0.082 m.; width, 0.066 m.; thickness, 0.039 m.

Height of letters, 0.008 m. One vertical line measures 0.013 m., five horizontal rows 0.044-0.046 m.

Inv. no. I 5811.

?a. 408-405 a.

-- ... ⁵ ... ι/ [-----]	ΣΤΟΙΧ.
-- ...μ. ^π γῆι [καὶ θριχσί ? --]	
-- .τῆς ἀλσ[-----]	
-- ΔΔ!!!	

2 lines illegible.

The letters are Attic. The fragment would not sit uncomfortably in the Erechtheum accounts, but I have found no very similar piece there. The only thought that suggests itself is that the entry in line 2 may have some relation to the γῆ καὶ τρίχες, which make fairly frequent appearances in the accounts of the statue of Athena Promachos; see Raubitschek, *Hesperia*, XII, 1943, p. 16. Line 3 is utterly bewildering, but the reading is sure. The first letter of line 2 is reduced to a diagonal of which the slant seems most appropriate to mu. Its appearance at the end of the word may be accounted for either by abbreviation or the initial labial implicit in the number which follows.

11 (Pl. 86). Fragment of Pentelic marble, broken on all sides, found on March 23, 1934, in a late Roman context over the Tholos floor (G 11).

Height, 0.073 m.; width, 0.065 m.; thickness, 0.02 m.

Height of letters, 0.009 m. Stoichedon: vertical checker about 0.014 m., horizontal checker about 0.01 m. Some of the letters are double cut.

Inv. no. I 1643.

a. 425-400 a.

ΣΤΟΙΧ.

[-----]ε.. *vacat*[-----]τει *vacat*[-----]τομ *vacat*

[? κεφάλαιον ἐπὶ τ]ῆς ἀρ

[χῆς --] *vacat*

This appears to be the end of an account or part of an account, probably arranged by columns. Despite the Ionic letter, I would attribute it to the last quarter of the fifth century. The find-spot may suggest a relationship to the texts published by A. M. Woodward, *Hesperia*, XXV, 1956, pp. 80-100, but it does not look very like any of those fragments.

12 (Pl. 86). Two fragments of Pentelic marble, broken on all sides.

(a) found on June 6, 1938, in a Classical context over the Klepsydra floor (T 27). Height, 0.09 m.; width, 0.044 m.; thickness, 0.044 m.

Inv. no. I 5519.

(b) found on June 9, 1938, below floor level at the south end of the cross-wall of the paved court below the Klepsydra (T 26).

Height, 0.178 m.; width, 0.035 m.; thickness, 0.04 m.

Inv. no. I 5522.

(a) and (b): height of letters, 0.007 m., cut in a stoichedon pattern, measuring 0.0104-0.0107 m. vertically, 0.0086 m. horizontally.

a. 410-405 a.


a

]. .^o[

ΣΤΟΙΧ.

]. ασ/[

]. ρνμ[

]. καὶ |[

5]. ἐκασ[τ

]. ἐπισκευ[

]. ς δεόσα[ς

]. ς ΗΗΗ[

lacuna

b

]. Η[

10]. ται λ[

]. ς ἀμφ[

]. ενοι[

]. ναπ[

]. εγ[

15]. τ[

--

I have interpreted the letters as Attic, but this rests purely on my belief that the vertical at the end of line 10 is spaced for an Attic lambda. The hand is of a type I have come to attribute to the last decade of the century, with a rather high narrow sigma developed for texts with close horizontal spacing. I see it on such texts as the Erechtheum accounts of 408/7, *I.G.*, II², 1951 (405/4?), the third hand in *I.G.*, I², 108 (see *B.S.A.*, XLVI, 1951, pl. 23) (407/6), and *Hesperia*, XXXII, 1963, no. 38, p. 39 (413-405). The outlier is *I.G.*, II², 45, but I cannot believe that that text is really to be dated to 378/7.

Beyond the apparent reference to repairs in line 6, I see at the moment very little hope of identifying the nature of the text. The appearance of 200 talents in line 8 is extremely tantalizing, but in default of any real context, it would be hazardous to assume that this is a sum of money in coined silver rather than a weight of some metal to be used in building operations.

13 (Pl. 87). Two fragments of Pentelic marble.

(a) complete on the left, found on February 26, 1935, in a late Roman context in the eastern part of the South Square (M 12).

Height, 0.10 m.; width, 0.03 m.; thickness, 0.06 m.

Inv. no. I 2522.

(b) broken on all sides, found on March 1, 1935, in a late context west of the East Stoa (N 14).

Height, 0.087 m.; width, 0.027 m.; thickness, 0.05 m.

Inv. no. I 2548.

(a) and (b): height of numerals, 0.007 m. Ten lines occupy a vertical space of about 0.10 m.

a --
 Δ[
 ††[
 vacat
 †††[
 5 vacat
 ΔΔΠ[
 vacat
 1-2Π[
 1-2Π†[
 --

b
 10 -- ..††[
 -- .†††[
 -- Δ††††[

-- ΔΔΠΗ[
 -- ΔΠΗΗ[
 15 -- .ΗΗ[
 -- .ΔΠ
 -- .ΗΗ
 -- .Η[

Though the fragments were found within four days of one another, they were only in the same general area, not the same section. The superficial dissimilarity of spacing disappears on measurement, which reveals that the apparent wider spacing of (a) is precisely twice that of (b). I have therefore assumed vacant lines in (a). The figures are well cut. Line 16 was squashed into the general pattern.

14 (Pl. 87). Fragment of Hymettian marble, broken on all sides, found on June 17, 1935, in late 3rd century (after Christ) destruction debris in the stage-wall trench of the Odeion (M 10).

Height, 0.141 m.; width, 0.054 m.; thickness, 0.048 m.

Height of letters, 0.007 m. Not stoichedon. Ten lines occupy a vertical space of 0.087 m.

Inv. no. I 3024.

a. 440-410 a.

--	<i>vacat</i>	<i>Non-ΣΤΟΙΧ.</i>
--	. . ερ[
--	. αν . ι[
--	ι <i>vacat</i>	
5	-- <i>vacat</i>	
	-- <i>vacat</i>	
	-- <i>vacat</i>	
	-- σθαι <i>vacat</i>	
	-- λεια <i>vacat</i>	
10	-- <i>vacat</i>	
	-- . αι <i>vacat</i>	
	-- . . . τ[
	-- ν[

The uneven line-lengths suggest some kind of building account. Conceivably, on that basis, [τροχι]λεια may be thought of in line 9.

15 (Pl. 87). Fragment of Pentelic marble, broken on all sides, found on May 27, 1937, in the original filling of the Post-Herulian Wall over the paved court below the Klepsydra (T 26-27).

Height, 0.0125 m.; width, 0.08 m.; thickness, 0.08 m.

Height of letters, 0.007 m. Near enough stoichedon to suggest that order may have been observed in the earlier part of the lines. Six lines vertically measure 0.066 m.

Inv. no. I 4924.

--
]ι *vacat*
]ον *ho*[
] *vacat*
]ᾱσι *vacat*
 5] *vacat*
]λεον[
] *vacat*
]ουφετ[
 --

A similar text to No. 14.

16 (Pl. 87). Fragment of Pentelic marble with smooth left edge preserved, found on May 26, 1938, in the east wall of the Church of the Hypapanti (T 21).

Height, 0.115 m.; width, 0.065 m.; thickness, 0.08 m.

Height of numerals, 0.007 m. About 0.012 m. were allowed for each line.

Inv. no. I 5461.

.[--
 Δ[--
 Δ†[--
 X --
vacat

The column of numerals started 3 cm. in from the margin. The 1000 drachm sign in line 4 was placed even further in and is isolated. Below it, nearly 4 cm. were certainly left vacant, but I am not sure that there are not more traces at the bottom of the stone. Sufficient of a vertical remains in line 1 to exclude chi or delta.

It would be foolish to assert that these four numbers had to be fifth century. The spacing however does recur on Agora I 6623, published by Meritt, *Hesperia*, XXXII, 1963, no. 37, pp. 38-39, though I doubt if the fragments really belong together. I see that text rather differently from Meritt, and would prefer an arrangement separating a narrow column of numerals from the text, except in line 1 which appears to be some sort of a heading. I arrange, with slightly different readings:

]Δ/[
	[.]ϞΤ	εδ[
	[.]Η ^v	^v
	[.]ΤΧ.	Γ[
5	[.]ΔΓ†	/[
	[.]	^v
	[.]ΤΤΤ	Κ[
	[Τ]ϞΗϞ	^v
	[..]††	^v
10	[..] ^v	[? ^v]
	[.]ΤΤΤ	[?]

That is, lines 2-3 form a single entry with the amount [.]ϞΤ|[.]Η

lines 4-6 form a single entry with the amount [.]ΤΧ.|[.]ΔΓ†|[.]||

lines 7-10 form a single entry with the amount

[.]ΤΤΤ|[Τ]ϞΗϞ[..]††|[..]^v

line 11 started another entry with the amount [.]ΤΤΤ|---

Despite the unimpressive appearance of the document, it records transactions of over 30 talents at a minimum.

17 (Pl. 87). Fragment of Pentelic marble with rough-picked right side and smooth back preserved, found on June 17, 1952, among marbles from the southeastern corner of the market square.

Height, 0.24 m.; width, 0.12 m.; thickness, 0.08-0.085 m.

Height of letters, 0.007 m. Lines 1-4 were cut in a checker pattern, measuring 0.012 m. vertically and 0.013 m. horizontally. Lines 7-8 were cut in letters of different size and spacing.

Inv. no. I 6555.

ca. a. 440 a.

About 6 lines illegible or vacant.

-- κ]α[θ]άπερ

-- ..]αιονι

vacat

-- .]οις

5 vacat

vacat

'''

--]ΕΐΟΙ

--].ΟΙΡΟ

Readings are very difficult, and line 7 in particular I have read in several different ways. I would judge that $\chi]o\hat{\iota}\rho o[s$ can not be read in line 8, and I have therefore no idea what kind of document this is.

18 (Pl. 87). Fragment of Pentelic marble, broken on all sides, found on June 28, 1935, in a context of the fourth century B.C. in a well west of the Tholos (G 11: 4).

Height, 0.108 m.; width, 0.026 m.; thickness, 0.051 m.

Height of letters, 0.012 m. The text appears to have been stoichedon, with a vertical spacing of 0.0175 m.

Inv. no. I 3059.

ca. a. 450 a.

Δ

ΣΤΟΙΧ.

Ε

Υ

ΕΙ

ΟΛ

Γ

Despite two very characteristic letters, a two stroke upsilon with much more curve to the left stroke than to the right and a lambda with an absolutely flat bottom stroke, I have not been able to place this fragment.

19 (Pl. 88). Fragment of Pentelic marble, broken on all sides and apparently reworked, found on February 21, 1936, in a context of the third or second century B.C. in the mouth of a water channel south of the Hephaisteion.

Height, 0.088 m.; width, 0.042 m.; thickness, 0.022 m.

Height of letters, 0.01 m. Cut in a stoichedon pattern 0.016 m. square.

Inv. no. I 3432.

a. 435-405 a.

ΣΤΟΙΧ.

]ΤΑ[

]ΥΥ[

]ΙΑ[

]ΟΣ[

The stoichedon pattern is rare. I know only two other examples, *I.G.*, I², 72, and *Hesperia*, XXXIII, 1964, no. 6, pp. 29-30. The piece does not belong to the first and probably not to the second.

20 (Pl. 88). Fragment of Pentelic marble, broken on all sides, found on February 29, 1936, in a dump from previous excavation outside the market square to the southeast (T 17).

Height, 0.09 m.; width, 0.052 m.; thickness, 0.032 m.

Height of letters, 0.01 m., apparently cut in a stoichedon pattern 0.02 m. square.

Inv. no. I 3617.

ca. a. 450 a.

--
]ρχ[
]σν[.

vacat 0.03 m.

The pointed, flat-topped rho is rather like that on *I.G.*, I², 11, 12/13, but the epsilon is dissimilar. The spacing and the uninscribed space below the text perhaps suggest some form of prescript, carved very close to 450 B.C.

21 (Pl. 88). Fragment of Pentelic marble, broken on all sides, found on February 3, 1938, in a Byzantine context south of the Eleusinion (U 21-22).

Height, 0.048 m.; width, 0.057 m.; thickness, 0.042 m.

Height of letters, 0.009 m. in a stoichedon pattern measuring 0.013 m. vertically and 0.0145 m. horizontally.

Inv. no. I 5181.

a. 430-405 a.

-- ΣΤΟΙΧ.

]οφιϛ[
]μαι[
]καρ[
--

I have no good ideas.

22 (Pl. 88). Fragment of Pentelic marble, broken on all sides, found on February 23, 1938, in a mixed Classical-to-Roman context south of the Eleusinion (U 22).

Height, 0.112 m.; width, 0.065 m.; thickness, 0.067 m.

Height of letters, 0.012 m. in a stoichedon pattern, measuring 0.0187 m. vertically, 0.022 m. horizontally.

Inv. no. I 5253.

?*saec.* V *a.*

.Ε
ΙΓ
ΟΛ
ΝΚ
5 ΙΚ

ΣΤΟΙΧ.

The pi is unusually narrow. The text appears to be part of a decree, but I have not seen the fragment, and am not absolutely convinced that it is fifth century.

23 (Pl. 88). Fragment of Pentelic marble, broken on all sides, found on March 3, 1956, among marbles found on the lower slopes of the Hill of the Nymphs.

Height, 0.079 m.; width, 0.05 m.; thickness, 0.025 m.

Height of letters, 0.01 m., arranged in a stoichedon pattern measuring 0.016 m. vertically and 0.013 m. horizontally.

Inv. no. I 6743.

a. 430-400 *a.*

ΣΤΟΙΧ.

--
 --] . ε χ [
 --] . ο δ ε [
 --] ε χ ε [
 --] ι ε [
 --

This may be from a decree or, slightly more probably, an inventory of the last third of the century.

24 (Pl. 88). Fragment of white fine-grained marble, broken on all sides and at the back, found on May 25, 1965, in Byzantine fill (S 16).

Height, 0.084 m.; width, 0.04 m.; thickness, 0.02 m.

Height of letters, 0.010-0.012 m., arranged in a stoichedon pattern, measuring 0.016 m. vertically and 0.014 -0.015 m. horizontally. The letters show traces of double cutting.

Inv. no. I 6999.

a. 430-405 *a.*

ΣΤΟΙΧ.

--
] . . σ [
] . τ ρ [
] ι ν ε [
] ε τ ο [
 5] . ν α [
 --

Decree?

25 (Pl. 88). Fragment of Pentelic marble, broken on all sides, found on February 20, 1947, on the surface of Apollodoros Street on the north slope of the Areopagus.

Height, 0.10 m.; width, 0.05 m.; thickness, 0.035 m.

Height of letters, 0.011 m., cut in a stoichedon pattern, measuring roughly 0.0166 m. vertically and 0.014-0.015 m. horizontally.

Inv. no. I 5964.

ca. a. 430 a.

] .Ε[
] ΟΓ[
] ΔΕ[
] ΝΕ[
] ΟΡ[
--

ΣΤΟΙΧ.

Most likely part of a decree.

I give a partial concordance between the publication here and *I.G.*, I³:

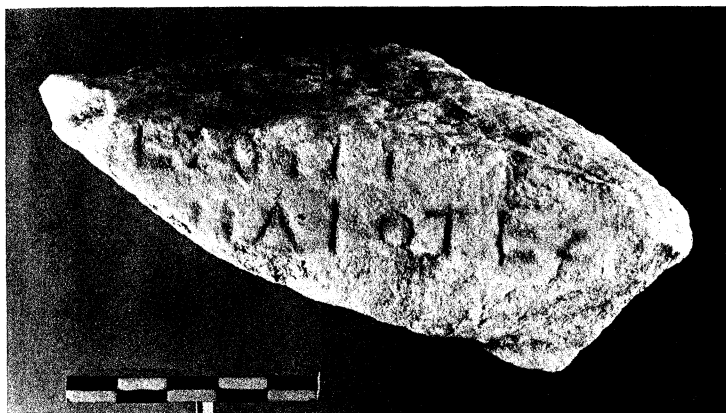
1 =	<i>I.G.</i> , I ³ , 187	14 =	492
2 =	210	15 =	493
3 =	196	16 =	496
4 =	365 <i>f.</i>	17 =	
5 =	381	18 =	
6 =	476, XXV C	19 =	
7 =	476, XXV E	20 =	26
8 =	476, XIX A	21 =	
9 =	480	22 =	
10 =	481	23 =	416
11 =	490	24 =	
12 =	495	25 =	
13 =	494		

DAVID M. LEWIS

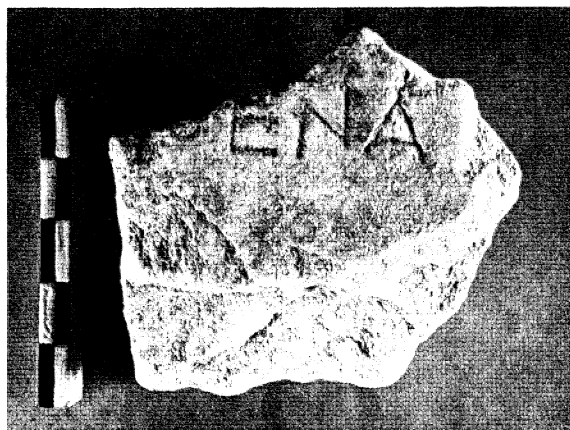
CHRIST CHURCH, OXFORD



1



2



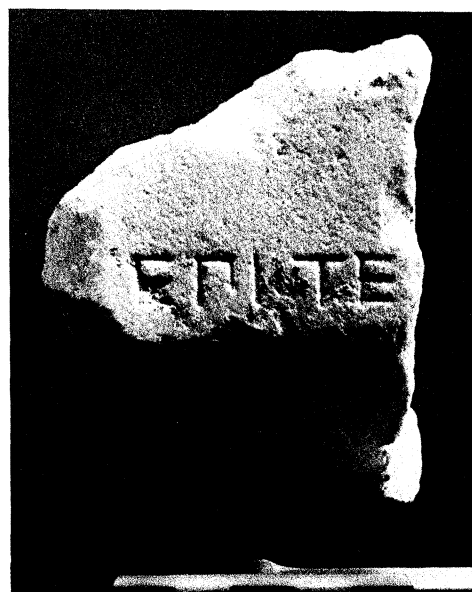
3



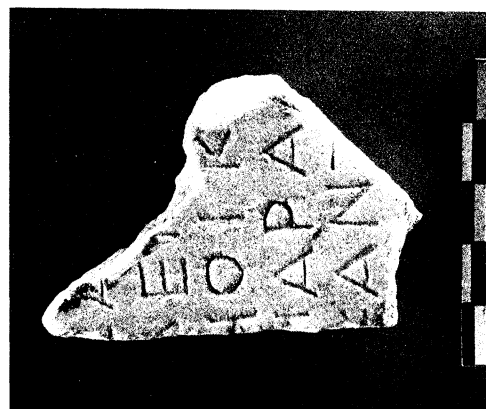
4



5



6



8



9



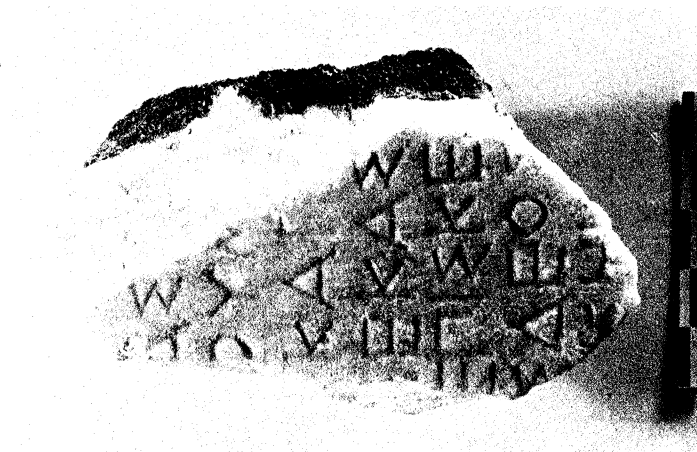
7



10



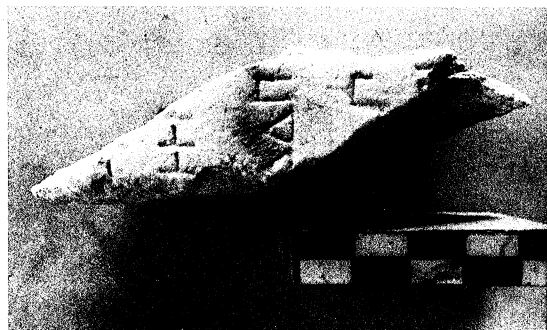
11



12a



12b



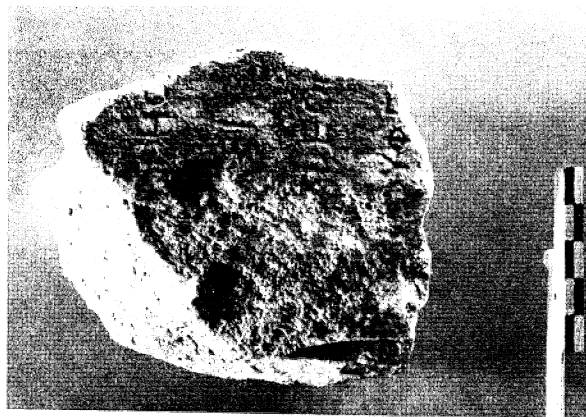
13a



13b



14



15



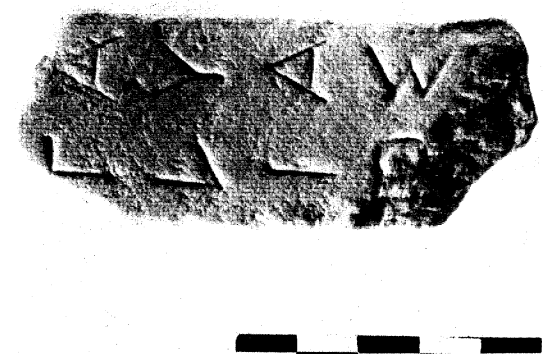
16



17



18



19



20



21



22



23



24



25