

THE LECHAION CEMETERY NEAR CORINTH

(PLATES 102-109)

IN September 1954 remains of an ancient cemetery came to light in a field just south of the main Corinth-Patras highway, near to the east end of the harbor of Lechaion and west of the prehistoric settlement of Korakou.¹ The field was being levelled by a bulldozer for cultivation, so that an immediate and summary excavation was necessary. We excavated for five days under the supervision of the late Serapheim Charitonides, then Epimelete for Corinthia and the Argolid, and under the auspices of the American School of Classical Studies.² Because of the proximity of the cemetery to the ancient harbor of Lechaion we have called it the Lechaion Cemetery.

The area of excavation was divided arbitrarily into four parts. No graves were found in section A, the easternmost part of the field, and only three in section D, the westernmost part, which was an extension of the original area into an adjoining field. In sections B and C, however, forty-three graves were discovered, twenty-five in B and eighteen in C.

Many of the graves had been disturbed by the bulldozer. In many cases the covers of the sarcophagi were smashed and in some only the floors were left intact. Enough remained to show that the rectangular graves were of normal dimensions and construction.³ Except those prepared for children, the internal width was about 0.50 m.-0.60 m. and the internal length varied from 1.33 m. to 2.00 m., with the majority about 1.80 m. long. Where the grave was preserved to its full depth this was about 0.50 m. Floors, sides, and cover-slabs were of a thick (0.08 m.-0.10 m.) grayish poros stone. All but one of the graves in section C, whether for adults or children, were carefully cut and covered on the inner surface with a fine layer of white stucco about 0.002 m. thick. The exception was C 18, a grave completely destroyed by the bulldozer. Enough fragments remained, however, to show that this

¹ The field straddles squares R-S/4 on Sheet 2 of the Topographical Map of Ancient Corinth (Scale 1:2,000).

² We take this opportunity of thanking Professor John L. Caskey, then Director of the American School, for permitting the use of facilities at Corinth for the study of this material, and also for taking many of the photographs. We are also grateful to Henry S. Robinson, the present Director, who has shown us similar hospitality. In making the catalogue we have been helped by several persons: Martin Robertson, Eugene Vanderpool, John Boardman, Lucy Talcott, and Judith Perlzweig Binder. But chiefly we must record our indebtedness to Hazel Palmer, whom we have never met but whose work we have taken to heart (C. W. Blegen, H. Palmer, R. S. Young, *Corinth*, XIII, *The North Cemetery*, Princeton, 1964, hereinafter referred to as *North Cemetery*). We have not hesitated to use her terminology and chronology, and we have borrowed ideas of format from her clearly presented grave-groups.

³ Cf. *North Cemetery*, pp. 71-73.

was not of stone but made from terracotta tiles stuccoed red on the inner side.⁴ In section B only four of the graves had received a finish of stucco and all were of rougher construction.

All graves in section C were oriented east-west. In section B, however, fifteen were east-west and ten north-south. Where pottery was present, it indicated that the north-south graves were later in date than the others, perhaps by as much as a century.

The contents of many of the graves had been severely mangled by the bulldozer. Other graves had been detected and pillaged earlier. Two, indeed, had holes in their walls (C 1 and C 7) and had been cleared of their offerings for as far as an arm could reach.⁵

Only in a few graves had much of the skeleton, usually the skull or leg bones, survived. But in every case where the observation could be made, the body had been so placed that the head was at the eastern or southern end of the grave.⁶ As for the offerings within a grave, they were intact only when protected by a cover-slab still in place or by a piece of cover-slab fallen over them. Those unprotected were recovered in small fragments and, where the grave had been reduced almost to the floor, they were mixed with sherds from outside the grave.

Of the forty-six graves examined, fifteen were empty of offerings, thirteen held sherds only, while eighteen contained whole material ranging from a single oinochoe lid (C 1) to a collection of ten pots and a bronze mirror (C 16). Unfortunately, the cemetery had been far too disturbed for these facts to be used for a contribution to the subject of Corinthian burial habits. At best it can be claimed for the Lechaion Cemetery that it exhibits no deviations from those general patterns established by Miss Palmer from the North Cemetery.⁷

Of these offerings we have selected for inclusion in the catalogue the contents of thirteen graves, which span three hundred and fifty years, from the beginning of the seventh to the second half of the fourth century B.C. The earliest, B 20, contained the most important find in the cemetery, a small aryballos (2) with a frieze around its body of battling warriors in true black-figure style. This piece is dated about 680 B.C. No other graves of this period were identified.

The sixth century was represented by one grave, C 15, which contained nothing but Corinthian miniature pots from the middle of that century. From the end of the sixth or the beginning of the fifth century was C 8, which, although it lacked

⁴ Cf. *ibid.*, pp. 73-75 for this type of grave.

⁵ Cf. *ibid.*, p. 87.

⁶ Cf. *ibid.*, p. 69.

⁷ The number of empty graves is perhaps surprising. However, most of these graves came from section B, and some may belong therefore to the period of B 20 before 600 B.C. when offerings were not common (*North Cemetery*, p. 79). At least one of the graves from the same area, B 3, seemed never to have been used. The cover-slab was intact, the interior had never been disturbed, yet we could not find a trace either of the skeleton or of any offerings.

pottery of significance, had an intact glass amphoriskos (9) and a pair of bronze lions (10) intended as attachments for the shoulder of a bronze dinos.

The richest group was from the first half of the fifth century, seven graves covering all decades of that period. The pottery from these graves is mostly Attic of well-known types, but each grave contained one or more Corinthian pots including an oinochoe, an apparently indispensable part of the furnishings of a grave. The Attic lekythoi once again prove their usefulness in determining the chronology of the graves. From an artistic point of view, however, they are not so worthy, although 41, in the manner of the Emporion Painter, has a certain pleasant style. The other pots, both Attic and Corinthian, add little to Miss Palmer's series, except two oinochoai of odd shape (13 and 50), and a one-handled cup (14) antedating her earliest example by ten years. In addition to the pottery, two well-preserved objects of bronze were found in this group: a mirror (36) in C 16, and a strigil (49) in B 21.

From the second half of the fifth century there were two graves, one from the middle or third quarter, the other from the fourth quarter. The latter, C 11, had no Attic pots but contained seven Corinthian lekythoi (62-68) with polychrome decoration made in imitation of Attic lekythoi. They are of poor quality but they do illustrate rather pointedly one of the sad side-effects of the Peloponnesian War.

The last of the graves, B 9, was from the third quarter of the fourth century. From it there came unexpectedly a silver bodkin (72), a rich gift within poor surroundings.

At the end of the catalogue, from the incidental finds not closely associated with the grave-groups, we have added three decorated fragments of Attic pottery and a bronze Corinthian coin.

The catalogue is arranged in chronological order. The number of a grave includes the section letter. Inventory numbers of individual finds are those of the Corinth Museum inventory.⁸

CATALOGUE

Except where indicated on the plates, all photographs are reproduced at the scale of 2:5.

GRAVE B 20

This grave was preserved to a maximum height of 0.29 m., just sufficient to prevent the destruction of the upper part of the skeleton. Two pots were found among the bones. They had been placed on either side of the body.

Both are Protocorinthian aryballoi from the early seventh century, the one with the frieze of warriors dated about 680 B.C.

POTTERY, CORINTHIAN

1. Aryballos. Pl. 102.

CP 2097. H. 0.0495 m., D. 0.034 m.

Chips missing from lip and foot. Fine greenish biscuit with smooth-polished surface deco-

⁸ We have omitted from the catalogue material from five graves that contained one pot each, in no case an important offering. These, in addition to two other incidental finds, have been inventoried as CP 2106, 2156, 2157, and 2159-2162.

rated with lustrous dark-brown glaze. Upper surface of lip, rays between circles, one joining the bases, the other the points; lower surface painted; neck, three encircling bands; shoulder, floral garland containing two lotus palmettes; flat handle, series of crossing oblique lines that end in hooks, perhaps a very rudimentary forerunner of the guilloche; body, checkerboard between three lines above and below; in lowest zone thin rays with bases connected by line; two lines closely spaced at joint of body and foot; lower outer edge and inside of foot painted; base, two concentric circles.

There is a general similarity in the organization of the decoration to an aryballos from Phaleron (K. F. Johansen, *Les Vases Sicyoniens*, Paris, 1923, pl. XVI, no. 7). Our aryballos, however, not only lacks the animals on the shoulder, but in shape seems broader and therefore a little earlier. It is either a decade or so earlier than its companion piece in the grave or was made at the same time by an artist who had learned his trade in the last years of the eighth century.

2. Aryballos. Pl. 102.

CP 2096. H. 0.046 m., D. 0.033 m.

Chips missing from lip and foot. Fine buff biscuit with smooth-polished surface decorated with thick chocolate-brown paint fired reddish where applied unevenly. Upper surface of lip, border of petals with two circles on either side; lower surface and neck plain; at joint of neck and shoulder, thin line; shoulder, unevenly drawn continuous zigzags bounded by pair of

radiating lines; flat handle, naked man; body, frieze of seven warriors with two thin lines above and below; in lowest zone flat pointed rays with thin line below; lower edge and inside of foot painted.

The first figure on the left directly beneath the handle is a naked warrior. With his left hand he grasps the long hair of the archer in front of him, with his right he puts the archer to the sword, the point of which can be seen protruding from the stomach. The naked archer was preparing to draw his bow,⁹ which he holds in his left hand, while the string and feathered arrow are in his right.¹⁰ Next to the archer is the most conspicuous of all the warriors. He is the only one clothed, and he wears a stiff, gaily decorated tunic that appears to be held in at the waist and then to flare out covering his thighs.¹¹ On his legs he seems to have high socks (or boots ?) with decorated welts or tops just below the knees. For protection he wears a helmet with towering crest, a Homeric type,¹² and carries a hoplite shield, the inner side of which shows the central arm-strap and the grip at the edge. For attack he has two spears, one for immediate use in his right hand, one in reserve in his left hand, which also holds the shield's outer grip. He is opposed by the leading warrior of a file of three who are obviously in alliance. Although there is general similarity among these three, they are all differently armed. The first wears a "Corinthian" helmet; in his right hand he carries a spear poised for throwing, in his left along with an additional spear he holds a "Boeotian" shield decorated with white spots.¹³ The second

⁹ According to A. M. Snodgrass (*Early Greek Armour and Weapons*, Edinburgh, 1964, p. 249, note 7) this bow is either the "single-curved composite" or "the European type."

¹⁰ The feathering of the arrow in the middle of the shaft is regular; Johansen, *op. cit.*, p. 155, note 5.

¹¹ Black and white checks are not unusual decoration for a garment, e. g. Penthesileia on the shield from Tiryns (*B. S. A.*, XLII, 1947, pl. 18, a), Johansen, *op. cit.*, pl. 20, no. 1, and *C. V. A.*, Munich, 3, pl. 148, 1-4 (no. 6633). We have not found parallels, however, for the use of irregular shapes.

¹² For two other examples in Protocorinthian, see H. L. Lorimer, *B. S. A.*, XLII, 1947, p. 99, fig. 9c.

¹³ These white dots also appear on the crests of helmets (cf. the Aristonothos vase). Rather

warrior is also armed with two spears and a "Boeotian" shield, but his helmet has a stilted crest.¹⁴ The third warrior is being attacked from behind, and so has turned the upper part of his body towards his attacker. For defense he has thrown his shield behind him, controlling it only by a thong that passes around his forearm directly below the elbow, and all too late he draws his sword from its scabbard.¹⁵ His assailant, the last figure in the frieze, wears a "Corinthian" helmet and has a spear in his right hand ready for throwing. With his left hand he is trying to seize his opponent's crest.

The subject of this scene is not immediately obvious. From the combination of traditional and hoplite armor and tactics it is clear that the artist was trying to depict an heroic action.¹⁶ However, we have not found any story in

which an archer was run through while supporting his leader.¹⁷ The simplest explanation is that the artist was not trying to show a particular engagement recorded in the heroic tales; in other words, that this is a genre scene.¹⁸

This description may well be right; yet it seems inadequate as an explanation of the distinctions made between the contesting groups. The three naked warriors with "Boeotian" shields are familiar figures. They are surely Greek. But the imposing man with a round shield is quite unfamiliar. His dress marks him as a foreigner and his nearest companion, the archer with the long hair, gives the same impression. Perhaps they are Trojans. Yet the evidence is too slight to allow a more definite identification of this scene.¹⁹

than identify the dots on the shields as metal bosses (Lorimer, *Homer and the Monuments*, London, 1950, p. 161) and those on the helmets as leather (*ibid.*, p. 235), one might consider both kinds to be purely decorative.

¹⁴ This helmet is quite different from the one worn by the clothed warrior with hoplite shield. It looks like a "Corinthian" helmet with its crest raised aloft and perhaps therefore qualifies for Miss Lorimer's "Attic" type (*B.S.A.*, XLII, 1947, pp. 86-87).

¹⁵ Snodgrass (*op. cit.*, p. 60) has a good description of this engagement.

¹⁶ Such would have been Miss Lorimer's view (*B.S.A.*, XLII, 1947, pp. 94-95) and it is supported by Snodgrass (*op. cit.*, p. 197). The latter makes it quite clear, however, that the carrying of two spears is no anachronism but a feature of the hoplite force (pp. 62, 138, 198).

¹⁷ On this point Snodgrass writes (*op. cit.*, p. 148): "the whole scene on the Lechaion aryballos is too enigmatic for the naked archer's identity to be guessed, save that he may be supporting the Greek warrior with hoplite shield."

¹⁸ This scene is described by T. J. Dunbabin as "Epic combat" (*The Greeks and Their Eastern Neighbours*, London, 1958, p. 78).

¹⁹ We are tempted to identify the clothed warrior as Memnon and to consider the scene either the slaying of Antilochos by Memnon or the slaying of Memnon by Achilles (both stories appear in the *Aethiopis*, which supplied to artists of the same period such subjects as the slaying of Penthesilea by Achilles and the slaying of Achilles by Paris). Either of these identifications might explain the strange costume of the clothed warrior; even among Trojans this Egyptian prince must have appeared distinctly foreign. It might also explain his lofty helmet and large shield: Memnon's armor was made by Hephaistos. The archer, no Greek, but no Nubian either, would not be out of place alongside Memnon (A. D. Fraser, *A.J.A.*, XXXIX, 1935, p. 37, pl. 7, a). But if the scene be the slaying of Antilochos by Memnon, then Memnon is shown in a situation that in no way foretells the end: the clothed warrior is in a desperate plight, while his challenging assailant has the place of prominence directly opposite the handle. And if the scene be the slaying of Memnon by Achilles, although the attitudes of the two central figures are understandable, can this fight be depicted without the contestants' mothers? Is it enough to say that the iconography of this particular engagement may not have been settled by the first decades of the seventh century?

Another explanation has been made by Snodgrass (*op. cit.*, p. 230, note 94): "but the

We now turn to the identification of the painter. J. L. Benson has attributed this aryballos to the Aetos Painter and thinks it one of his early works.²⁰ The fact that Benson chose a later painter points out the great difficulty in determining the authorship of this piece. There are so few Early Protocorinthian works preserved of this style that one is forced to look at the Middle Protocorinthian vases for comparisons. And such advances were made in one generation in the black-figure style that the later pots seem very different from the earlier.

Benson's attribution, which at first we did not find convincing, has in fact much in its favor. Although the main decorated zone on the Lechaion aryballos is stronger and tighter in design than either of the two aryballoi that Benson claims for the Aetos Painter, one in Syracuse, the other in London, and although the individual figures on the Lechaion aryballos

seem far removed from those on the London aryballos both in style and detail,²¹ yet there is a close resemblance between the figures of the former and those on the Syracusan aryballos. Furthermore, because the published drawing of the Syracusan aryballos is not too clear, this resemblance is even more noticeable when one sees the pot itself. An association between the Lechaion and Syracusan aryballoi seems to us quite justified, and we are therefore prepared to accept as most probable Benson's attribution of the Lechaion aryballos to the Aetos Painter.²²

Whether or not Benson's attribution wins general acceptance, and indeed only the finding of many more Early Protocorinthian works can turn probability to certainty, there is no denying the excellence of the Lechaion aryballos, the lively action, the apparent enjoyment of a newly discovered style. Here is a worthy predecessor of the masterpieces to be produced a generation later.²³

chequered dress of the warrior . . . suggests that it may possibly be a representation of Athena, and the scene perhaps a Gigantomachy." If one can entertain the notion that the central figure is female, perhaps one should review the possibility that here is another representation of Penthesileia dressed in black and white checks. But the lack of supporting Amazons would be very difficult to explain.

²⁰ *A. J. A.*, LX, 1956, p. 220. The Aetos Painter is Benson's "Jägermaler" (*Die Geschichte der korinthischen Vasen*, Basel, 1953, p. 16). In both publications he ascribes only two pots to this painter, Nos. 5 and 6 from the longer list of attributions made by T. J. Dunbabin and M. Robertson, *B.S.A.*, XLVIII, 1953, p. 176. In their list they include the Perachora aryballos (*B.S.A.*, XLII, 1947, p. 93, fig. 7). The differences between it and the Lechaion aryballos are so vast that they cannot both be considered the work of a single artist. It follows, therefore, that if Benson's attribution is correct, then the works assigned to the Aetos Painter by Dunbabin and Robertson must be modified; or, conversely, that if their list is correct, then the Lechaion aryballos is not by the Aetos Painter.

²¹ The figures on the Lechaion aryballos are natural and solid, on the London aryballos elongated and oddly balanced. The painter of the former is most careful to indicate the fingers, that of the latter tends to draw his hands without articulation of the fingers; again, the Lechaion painter renders buttocks and thighs separately and successfully, while the London painter makes little distinction between these parts and thus his legs seem to grow directly from the buttocks.

²² Another possible comparison can be made between the man on the handle of the Lechaion aryballos and the single figure of a man on an aryballos from Rhodes attributed to the Corneto Painter by Dunbabin and Robertson (*B.S.A.*, XLVIII, 1953, p. 175 = Benson's "Gruppe des gespenstischen Stiers"). But this one point of similarity is probably more indicative of a relationship existing between two artists than of the style of an individual.

²³ A connection between the painter of the Lechaion aryballos and the Boston and Macmillan Painters is not impossible. The Macmillan Painter was in the habit of showing shields in profile or from within, and was interested in depicting their inner sides. In the Louvre aryballos attributed to him there is a striking pattern of three interlocking spearheads in the same fashion as on the

GRAVE C 15

This grave was one of those almost entirely eliminated by the bulldozer. Its contents were broken into small fragments, of which many were lost. There were originally at least twelve pots inside the grave, several of them miniatures, and all except one, an amphoriskos of red biscuit coated with lustrous black glaze, of fine greenish buff Corinthian biscuit decorated with thin brownish glaze and purple on red paint. Only three of these pots could be restored sufficiently to justify inclusion in the catalogue. All the fragments showed extremely simple decoration consisting mainly of horizontal bands and, occasionally, of groups of dots. Among them were pieces from three more pattern skyphoi, three slender amphoriskoi, a miniature hydria, and a second pyxis. The material from the grave seems to be basically Middle Corinthian, near the end of that period, but conceivably it could be as late as the beginning of Late Corinthian. The grave should therefore be placed either in the second quarter or about the middle of the sixth century.

POTTERY, CORINTHIAN

3. Pattern skyphos. Pl. 102.

CP 2258. H. 0.039 m., D. rim est. 0.069 m.

Plain lip; horizontal handles; low ring foot. Traces of black glaze all over interior; on exterior reserved bands of various widths below a broad zone filled with vertical lines; narrow concentric circles on base.

Cf. *North Cemetery*, pp. 105, 194, no. 181-2, from a grave dated "no later than the middle of the sixth century." But the type is too com-

mon throughout the century to be of much help in establishing a precise chronology.

4. Figured kylix. Pl. 102.

CP 2257. H. 0.053 m., D. rim est. 0.104 m.

Low offset lip flaring sharply; horizontal handles on shoulder; small flaring ring foot. Traces of black glaze over all interior except reserved band below edge of rim; traces of four reserved bands on lower exterior and of reserved handle-zone with frieze of bird flanked by siren and griffin-bird, perhaps the same on both sides, now preserved in faint outline only.

A similar kylix with debased painting was found in grave 222 of the North Cemetery, which was dated "probably not later than the middle of the sixth century" (*North Cemetery*, pp. 108, 204, no. 222-1). There is evidence, however, that the animal-frieze style continued after the middle of the sixth century (E. Brann, *Hesperia*, XXV, 1956, p. 351, note 5).

5. Pattern pyxis with concave sides. Pl. 102.

CP 2259a-b. H. pyxis 0.043 m., D. base 0.071 m., H. lid 0.033 m., D. 0.071 m., D. knob 0.023 m.

Box has concave sides; two small applied strips form handles. Lid slightly convex with flange underneath and tall ridged knob on top. Traces of decoration in brownish glaze and purple paint; bands of various widths on exterior of both pyxis and lid; at least two bands on interior of pyxis.

This example is in shape Middle Corinthian (cf. *North Cemetery*, p. 181, no. 156-10), with the decoration pointing to the end of that

Lechaion aryballos between the major contestants. As for the Boston Painter, he uses Homeric helmets, still resorts to zigzags, and the pose of several of his figures is reminiscent of the Lechaion aryballos. But how to assess these points of similarity? Were there more pots with these scenes they might not seem so important. Even so, the impression created is that the Macmillan and Boston Painters might have learned their art in the same atelier as the painter of the Lechaion aryballos, or possibly from him, a conclusion that Dunbabin and Robertson would probably have agreed with, seeing that they described the Boston Painter as a pupil of their Aetos Painter (*B.S.A.*, XLVIII, 1953, p. 178).

period. However, it does not look as late as the last one in Miss Palmer's series (*North Cemetery*, p. 115).

GRAVE C 14

This grave was preserved to a height of 0.16 m., and only two pots were uncovered in position. They were sufficient, however, to date the grave to the late sixth century.

POTTERY, CORINTHIAN

6. Round-mouthed oinochoe, Type A. Pl. 103.

CP 2154. H. 0.12 m., D. 0.115 m.

Convex, squat body with sloping shoulders; deep, wide-spreading mouth; plastic neck-ring; flaring foot. Buff biscuit coated with paint that has fired dull red except in few places where it is black. Traces of probably five narrow bands of added paint below handle, three of white separated by two of red; on lower body traces of probably three narrow bands, one of red between two of white.

Oinochoai of this squat shape appear at the end of the sixth century and thereafter "sporadically" until the middle of the fifth (*North Cemetery*, pp. 112, 134, and note 132). Our example seems to have more in common with the earlier ones than the later; cf. *North Cemetery*, p. 211, no. 251-1, also found with an Attic black-glazed skyphos with torus foot.

POTTERY, ATTIC

7. Black-glazed skyphos with torus foot. Pl. 103.

CP 2153. H. 0.08 m., D. 0.115 m.

Plain rim; horizontal handles; low ring foot. Fine deep red biscuit; good shiny black glaze. Broad, dull red band, poorly fired, near rim.

Cf. M. T. Campbell, *Hesperia*, VII, 1938, p. 579, no. 42, and *North Cemetery*, pp. 211-212, no. 251-2, both similar in shape and proportion. Miss Palmer places grave 251 in the last quarter of the sixth century.

GRAVE C 8

The lack of any pottery, except a lid from a trefoil oinochoe, makes it difficult to date this grave with any confidence, especially since the other material affords little chronological evidence. Exact parallels for the pair of bronze lions are hard to find, and glass amphoriskoi, although widely known, have been usually published without a context. While the relationship of this grave to the others in the immediate vicinity of the cemetery is probably significant, unfortunately only one of them, C 3, can be dated, and it falls within the first two decades of the fifth century. *Faute de mieux*, we suggest a tentative dating of this grave to the end of the sixth or the beginning of the fifth century.

POTTERY, CORINTHIAN

8. Lid of trefoil oinochoe. Not illustrated.

CP 2158. W. 0.052 m.

Small knob in center. Painted red on sides of rim, elsewhere black that has turned orange-red near edge.

This lid would have fitted a large trefoil oinochoe ca. 0.10 m. high, e.g. *North Cemetery*, p. 216, no. 263-3, whose lid it resembles.

GLASS

9. Amphoriskos. Pl. 103.

MF 9751. H. 0.094 m., D. 0.049 m.

Slim tapering body; flaring mouth; small knob-like foot. Basic color deep bright blue; below shoulder three rows of pale blue zigzags with traces of thin yellow lines bounding them, following fluting of body; on rim, lower body, and beneath foot, bright yellow bands; on lower body beneath yellow, pale blue band.

Glass vases with this decoration and of this general shape are common throughout the Mediterranean from the second half of the sixth to the fourth century (P. Fossing, *Glass Vessels Before Glass-Blowing*, Copenhagen, 1940, pp. 71-72, and A. N. Stillwell, *Corinth*, XV, i,

The Potters' Quarter, Princeton, 1948, p. 130, no. 86). Many of the examples in Fossing's list of published amphoriskoi (*op. cit.*, pp. 71-72, note 2) have a plumper, more rounded belly than the Lechaion one, the sides of which are almost uncompromisingly straight from the widest point of the body to the joint of body and foot. In this feature it is similar to one published by G. A. Eisen, *Glass, Its Origin, History, Chronology, Technic and Classification to the Sixteenth Century*, I, New York, 1927, pl. 4b, and may be similar to one found at Certosa, Bologna (A. Zannoni, *Gli Scavi della Certosa di Bologna, Tavole*, Bologna, 1884, pl. 41, 9), but the drawing does not admit a close comparison. As for the two said to have come from Corinth and published by W. Fröhner, *La Verrerie antique*, Chateau du Donjon, 1879, pl. II, 7-8, the Lechaion example has the severity of no. 7 and the size of no. 8. Comparison with the many amphoriskoi published by M. Almagro, *Las Necrópolis de Ampurias*, Barcelona, 1953, pls. 5 and 14, is of no help chronologically, other than to reaffirm the view that such glass vessels were becoming very popular by the beginning of the fifth century.

BRONZE

10. Pair of lions. Pl. 103.

MF 9752a-b.

(a) L. (hook to tail) 0.041 m., W. (at paws) 0.0155 m., thickness (head to paws) 0.015 m.

Couchant; front paws outstretched, back paws in crouching position; head turned back to look at tail curled over haunches. Mane cross-hatched and front paws marked with two short vertical engraved lines; fringe also marked with short vertical lines; eyes represented by oval cuttings; nose bears two diagonal engraved lines and whiskers are also indicated by diagonal incision; mouth is deep, slightly curved cutting between two small bored holes and tongue is indicated by triangular cutting below; backbone is a faint ridge and ribs are marked with four parallel depressions, one

being very close to the engraving for mane; tip of tail is cross-hatched.

(b) L. 0.043 m., W. 0.165 m., thickness 0.014 m.

Similar to (a) but with small differences. Tail curled more tightly over haunches; nose smooth and shiny and whiskers marked with cross-hatching; tongue not marked; chin more pronounced; fourth depression marking ribs more distinct.

Both lions have a small hook at the head and part of a chain still in the hole. Both are cast solid, with the underside concave. They are obviously intended as a pair but the slight differences in size and detail indicate that they could not have come from the same mould.

11. Small handle. Not illustrated.

MF 9814. Inner D. 0.02 m., thickness of ring 0.003-0.004 m.

Ring has traces of set of ridges opposite the attachment, a roll slightly flattened on one side and decorated with series of ridges.

Similar material has been found at Corinth: G. R. Davidson, *Corinth*, XII, *The Minor Objects*, Princeton, 1952, p. 70, nos. 518-519; cf. also H. Payne, *Perachora*, I, Oxford, 1940, pp. 161-162, pl. 65, no. 14.

12. Bar from dinos. Not illustrated.

MF 9815. L. 0.026 m., D. 0.06 m.

Seven sets of ridges around bar as decoration. Slightly flattened all down one side but no trace of adhesive. Not pierced to receive ends of handle.

Cf. *Perachora*, I, pp. 161-162, pl. 66, nos. 19-21.

Also within this grave were found fragments of a chain associated with the lions and a lump of some substance like resin.

The lions and fragments of chain, the small bronze ring handle, and the bar must all have been ornaments for a dinos, although none shows signs of ever having been attached, nor was there any trace of a dinos in the grave.

Similar accessories have been found at Perachora, including a pair of couchant lions, also Corinthian, which are given a date probably in the third quarter of the sixth century (*Perachora*, I, pp. 136-137, pl. 43, nos. 8-9). Payne connects the Perachora lions with a goat from a dinos found at Trebenishte (B. D. Filow, *Die archaische Nekropole von Trebenishte am Ochrida-See*, Berlin and Leipzig, 1927, pp. 53-54, figs. 52-53). At first sight any comparison between these bronze animals and the Lechaion lions may seem far-fetched. However, there are many similarities in style and technique, particularly between the Lechaion lions and the Trebenishte goat, sufficient, we believe, to associate them chronologically. What separates them is the quality of design and workmanship. The Lechaion lions have much in common also with a "Perugian" group dated in the second half of the sixth century (W. L. Brown, *The Etruscan Lion*, Oxford, 1960, p. 113, pl. XLIII, b).

GRAVE C 3

The Attic pots contained in this grave were made in the first two decades of the fifth century, none necessarily at the very beginning of the century, none as late as 480 B.C. They thus seem to form a homogeneous group dated 495-485 B.C. The Corinthian pottery should be dated to the same period, even though the North Cemetery produced no one-handled cups until about 475 B.C. It is easier to believe that the beginning of this series of a very simple shape, already known from the sixth century, should be put at least as early as 485 B.C. than that all the Attic pottery should have been "treasured" for a decade or more before the interment.

POTTERY, CORINTHIAN

13. Large trefoil oinochoe and lid. Pl. 103.

CP 2123. H. 0.142 m., D. 0.112 m.

Squat, squarish body; trefoil mouth; short collar-neck clearly set off from shoulder; high ribbon handle; flaring foot. Pale buff biscuit;

poor black glaze. Reserved rim at edge of trefoil lip; body decorated below handle with four purple bands; broader purple band where neck joins body.

Even though this type of oinochoe constitutes one of Miss Palmer's largest classes (*North Cemetery*, pp. 130, 132), this particular example stands alone, partly because it has so squarish an appearance and partly because the widest part of the belly is so high. Were it not for the neck and mouth, one might have connected it with a round-mouthed oinochoe of Type B (cf. *North Cemetery*, p. 221, no. 275-2, from a grave dated 485-475 B.C.).

14. One-handled cup. Pl. 103.

CP 2124. H. 0.052 m., D. 0.10 m.

Rim turns in slightly; one horizontal loop handle; low raised foot; base concave. Soft greenish buff biscuit; originally coated with black glaze on interior and upper part of exterior.

This rather common, essentially household type first occurred in the North Cemetery about 475 B.C. in grave-groups clearly later, if only by a decade, than this assemblage (*North Cemetery*, pp. 129, 227-228, graves 294 and 295).

POTTERY, ATTIC

15. Palmette skyphos. Pl. 103.

CP 2121. H. 0.063 m., D. 0.077 m.

Plain lip; widely flaring foot. Fine red biscuit; good black glaze. Narrow reserved band on inside of lip; reserved handle-zone decorated with blobby palmettes and lotus buds on degenerate chain, the whole in silhouette; rows of small white dots in hearts of palmettes and larger ones on chain; reserved band below; lower edge and underside of foot reserved.

16. Palmette skyphos. Pl. 103.

CP 2120. H. 0.063 m., D. 0.077 m.

A pair with 15 and almost exactly alike.

Cf. one from the Athenian Agora, the Rock-

cut Shaft (E. Vanderpool, *Hesperia*, XV, 1946, p. 297, no. 115) and two with even more sloppy drawing from Corinth (*North Cemetery*, pp. 223-224, nos. 281-9, 10). The "contemporary example" from Halai quoted by Miss Palmer is no later than 480 B.C., while Vanderpool's skyphos was found with ostraka of Megakles and so belongs to the decade 490-480 B.C.

17. Black-glazed skyphos of Corinthian shape.
Pl. 103.

CP 2125. H. 0.073 m., D. 0.101 m.

Lip turns slightly inwards; flaring foot. Thin pinkish biscuit coated with tarnished black glaze. Broad band below rim on exterior has turned red and is flaking; traces of pair of purple lines just below handles; above foot, reserved band filled with vertical lines, which continue up into solid black; edge of foot reserved; base reserved and decorated with a central dot and four concentric circles.

Cf. *North Cemetery*, p. 214, no. 259-2, and Vanderpool, *Hesperia*, XV, 1946, p. 319, no. 243, though neither has quite the same spring or neatness as the Lechaion example. Nevertheless, all three are close contemporaries from the "early years of the fifth century," i.e. 500-490 B.C.

18. Black-glazed kylix with concave lip.
Pl. 103.

CP 2122. H. 0.049 m., D. 0.094 m.

Low offset lip with concave profile; slight suggestion of ring at base of stem. Fine pale red biscuit; thick black glaze, flaking and tarnishing. Reserved inside handles, outer edge and resting surface of foot, and inside stem.

On interior of bowl there is clear trace of a circle with diameter of 0.041 m., the same as that of the base of this kylix. Within the circle the glaze has fired more red than black. This misfiring was probably the result of insufficient heat in the kiln to reach an area protected by the stacking of a kylix of similar design within the bowl (J. V. Noble, *The Techniques of*

Painted Attic Pottery, New York, 1965, pp. 77, 79-80).

This example is close to one from the Athenian Agora (Vanderpool, *Hesperia*, XV, 1946, pp. 316-317, no. 232), which can be dated in the eighties of the fifth century. It thus joins the first two pieces in Miss Palmer's series (*North Cemetery*, p. 160), both of which are related to kylikes from the Rock-cut Shaft.

19. Palmette lekythos. Pl. 103.

CP 2118. H. 0.128 m.

Cup mouth; trochilus foot. Pinkish biscuit with orange surface; black glaze of good quality. On shoulder double row of narrow rays; on body three upright palmettes alternating with lotus buds on chain; white arcs about palmettes; rows of white dots in hearts of palmettes; in eyes of chain black dots with white superimposed; reserved band below; edge and underside of foot reserved.

20. Palmette lekythos. Pl. 103.

CP 2119. H. 0.136 m.

Cup mouth; trochilus foot. Pinkish biscuit with orange surface; good black glaze. On shoulder double row of rays; on body four upright double palmettes alternating with double lotus buds on chain; white arcs above and below palmettes; rows of white dots in hearts of palmettes; in eyes of chain black dots with white superimposed; two reserved lines below; upper edge and underside of foot reserved.

Both these lekythoi belong to Miss Palmer's group i (*North Cemetery*, pp. 163-164) and should be placed with the first of her series. Cf. also *C.V.A.*, Reading, 1, pl. 12, 10, which is dated in the first decade of the fifth century. They are all clearly associated with the lekythoi from the soros at Marathon and should be dated in the years immediately before and perhaps after the battle, about 495-485 B.C. For the double palmettes on **20**, see *North Cemetery*, p. 220, no. 272-10.

GRAVE B 10

This grave is very close in date to Grave C 16, which is securely placed in the decade 480-470 B.C. In this grave, however, there are a few pieces that might have been made a little before 480 B.C. Consequently we have listed it first and given it a date about 485-475 B.C.

POTTERY, CORINTHIAN

21. Round-mouthed oinochoe, Type A.
Pl. 104.

CP 2103. H. 0.132 m., D. 0.106 m.

Squat, globular body with ridge at joint of shoulder and neck; deep wide-spreading mouth; high ribbon-handle; slightly flaring foot; base concave. Pale buff soft biscuit; traces of coating of thick black glaze all over exposed surface except for base.

Cf. *North Cemetery*, p. 224, no. 283-3, from a grave dated 480-470 B.C., and also p. 222, no. 277-3, from a decade earlier. The latter has a similar shape but the neck and foot are different.

POTTERY, ATTIC

22. Black-glazed cup-skyphos. Pl. 104.

CP 2101. H. 0.062 m., D. 0.131 m.

Slightly concave lip; sturdy ring foot with groove on upper edge. Heavy, pale red biscuit with very smooth, velvety, reddened surface; thick shiny black glaze. Base reserved and decorated with central dot and five concentric circles, third and fifth wider and darker than others.

Except for the lip, which is strongly concave, there is an almost identical cup-skyphos in Corinth (*North Cemetery*, p. 222, no. 274-5) from a grave dated about 485-475 B.C. Despite this difference, the two pieces look close contemporaries.

23. Palmette kylix. Pl. 104.

CP 2102. H. 0.066 m., D. 0.133 m.

Offset lip concave but edge directly above

shoulder. Pale orange biscuit with darker smooth surface; good thick black glaze. Center of interior reserved and decorated with dot and circle; inner edge of lip reserved; reserved handle-zone with palmettes and lotus chain indifferently drawn; white added on eyes of chain and tops of lotus buds; edge and underside of foot reserved.

In Miss Palmer's series (*North Cemetery*, p. 158) this kylix seems to stand between nos. 272-4 and 297-4. While it has the shallower bowl of the latter, it has the thinner stem and greater overall finesse of the former. It should be dated about 480 B.C.

24. Palmette lekythos. Pl. 104.

CP 2104. H. 0.17 m.

Cup mouth; trochilus foot. Pale red biscuit with smooth polished surface; lustrous black glaze with purple tinge. On shoulder double row of rays; on body four upright palmettes alternating with lotus buds on chain; white used on lotus buds and continued to form arcs above palmettes; dots in hearts of palmettes; black dots in eyes of chain with superimposed white; below palmette zone three wet-incised lines.

This lekythos is one of Miss Palmer's intermediate group ii (*North Cemetery*, pp. 163-164). Her examples are from graves dating from 480-470 B.C. to 465-455 B.C., but the differences among them are too slight to justify subtle chronological distinctions within the group.

25. Black-glazed lekythos. Pl. 104.

CP 2105. H. 0.134 m.

Cup mouth; disc foot with convex edge wider at top than bottom. Pale brown biscuit reddened and smoothed on surface; thick even black glaze. On shoulder double row of rays swinging right; below shoulder sloppy meander with two black lines below; on solid black body two purple lines.

This lekythos, as well as 35 below which it

closely resembles, cannot be dated except by the context provided by the grave-group. For others found at Corinth, see *North Cemetery*, pp. 162-163.

GRAVE C 16

The Attic material makes it possible to date this grave to the decade 480-470 B.C. In addition to the pots from the middle and lower half of the sarcophagus, there was a bronze mirror placed alongside the occupant's head, as if ready for use. At the foot of the skeleton were fragments of eggshell. Here again is evidence that the finding of an egg in an adult-size grave normally indicates the burial of a woman (*North Cemetery*, pp. 70, 84).

POTTERY, CORINTHIAN

26. Pattern skyphos. Pl. 104.

CP 2145. H. 0.031 m., D. rim 0.043 m., D. base 0.02 m.

Bottom flat with rough shallow stub in center. Traces of black glaze on interior and underside of base. On exterior broad band of thick red paint with narrow band of thin red paint on either side fills the central zone; bottom zone painted solid black and upper zone filled with pattern of continuous zigzags in black.

Pots of this type are well represented at Corinth and Miss Palmer says of their chronology that "they become progressively fewer until they disappear about the middle of the fifth century" (*North Cemetery*, p. 123). The shape and general carelessness of this example put it in the second quarter of the fifth century.

27. Lid from powder pyxis with pattern decoration. Pl. 104.

CP 2147. H. 0.031 m., D. 0.049 m.

Straight sides; thick rolled rim; grooved over-hanging top. Buff biscuit decorated with thin brownish glaze. On sides groups of broad and narrow horizontal bands; on top solid

center bounded by two concentric circles, one narrow, one broad, and concentric band of "z's" with two narrow bands on either side.

Cf. *North Cemetery*, p. 227, no. 293-1, with similar decoration on the cover. It is from a grave dated "about the second quarter of the fifth century."

28. Large trefoil oinochoe and lid. Pl. 104.

CP 2146. H. (with handle) 0.167 m., D. 0.135 m., D. base 0.082 m.

Rounded body with clear high shoulder; short neck set off from body and trefoil mouth; tall vertical handle; low ring foot. Buff biscuit with slightly yellow surface; dull black glaze. On shoulder sets of double incised lines radiating to form patterns of tongues; below, three white bands alternating with two purple bands; lower down on body purple band; reserved band of varying width on body above foot; edge and underside of base reserved.

Cf. *North Cemetery*, p. 228, no. 295-3, a similar pot except for the lack of incised decoration on the shoulder, dated about 480-470 B.C.

POTTERY, ATTIC

29. Palmette skyphos. Pl. 104.

CP 2144. H. 0.051 m., D. rim 0.072 m., D. base 0.045 m.

Bored conical hole, widest at bottom, in center of slightly concave foot. Brownish biscuit; good black glaze. Reserved handle-zone decorated with chain of palmettes and lotus buds; thick white dots in eyes of chain; splashes of white on upper parts of lotus buds; narrow band on inside of rim, similar band beneath handle-zone, inside of handles, edge and underside of foot reserved.

The shape of this skyphos is close to **15** and **16** from Grave C 3, but the decoration is different and shows another debased variant of the palmette-lotus frieze (cf. *C.V.A.*, Karlsruhe, 1, pl. 32, 15). However, they must all be within a few years of each other with none as late as *North Cemetery*, p. 235, no. 320-4.

- 30.** Black-glazed skyphos of Corinthian shape.
Pl. 104.

CP 2143. H. 0.098 m., D. rim 0.121 m., D. base 0.068 m.

Plain lip; ring foot. Reddish biscuit; even black glaze. Narrow reserved line just inside rim; on exterior two purple lines below handles and broad reserved band above foot filled with thin vertical lines in brown paint; underside of base reserved and decorated with two concentric circles and central dot in brown paint. Graffito on base: $\leq O$

Miss Palmer has several skyphoi that resemble this one, but no. 283-5 comes closest (*North Cemetery*, pp. 154, 224). Not only has it the same taut shape with no sag in the lower part of the belly, but the decoration is also neatly applied. The same date is justified, 480-470 B.C.

- 31.** Black-figured lekythos with chimney mouth.
Pl. 105.

CP 2151. H. 0.153 m.

Chimney mouth; foot in two degrees. On shoulder double row of rays; on body bearded man reclining on couch with female lyre player in attendance and, on either side, woman riding mule; branches in background; women's flesh, chest and belly of mules, lyre, legs of couch, fillet on man's head in white; above scene checker-band; below, two pairs of narrow reserved lines; edge of upper step and underside of foot reserved.

Manner of the Haimon Painter (J. D. Beazley, *Attic Black-Figure Vase-Painters*, Oxford, 1956, pp. 551-553, particularly nos. 347-349, the last of which is more competently drawn and makes greater use of incised lines). This and the following three lekythoi belong to the same group and can be dated 480-470 B.C. (cf. C. G. Boulter, *Hesperia*, XXXII, 1963, p. 115, Grave A).

- 32.** Black-figured lekythos with chimney mouth.
Pl. 105.

CP 2149. H. 0.181 m.

Chimney mouth; foot in two degrees. On shoulder double row of rays; on body goddess, or perhaps Ariadne, mounting quadriga with Dionysos behind the horses' tails; woman near to his right and satyr in front of horses' heads; branches in background; women's flesh, wreaths around Dionysos' head and neck, goads, horses' hooves, ornament on harness, and sash (?) across satyr's chest in white; above scene sloppy meander and below two pairs of wet-incised lines; edge of upper step and underside of foot reserved.

Manner of the Haimon Painter (Beazley, *op. cit.*, pp. 539-542; cf. his no. 71 which is close in style).

- 33.** Black-figured lekythos with chimney mouth.
Pl. 105.

CP 2150. H. 0.175 m.

Shape, scene on body, secondary decoration, and use of white are closely similar to **32** above, which differs only in size, being slightly larger.

Manner of the Haimon Painter.

- 34.** Black-figured lekythos with chimney mouth.
Pl. 105.

CP 2148. H. 0.207 m.

Chimney mouth; foot in two degrees. Lip reserved; on shoulder double row of rays; on body charioteer mounting quadriga (only three horses' heads can be distinguished) with woman holding goad and old man looking on; seated youth in front of horses' heads; free use of white for charioteer's chiton, woman's flesh, tresses of old man and border of his himation, horses' hooves, ornament on harness, young man's chiton and border of his himation; above scene two rows of black and white dots placed to form zigzag; below, two pairs of wet-incised lines; top and edge of upper step, except for black line at joint, and underside of foot reserved. Graffito on bottom: ME

Manner of the Haimon Painter; cf. especially *C.V.A.*, Reading, 1, pl. 13, 2, which is different

in minor details only (= Beazley, *op. cit.*, p. 543, no. 127).

35. Black-glazed lekythos. Pl. 105.

CP 2152. H. 0.132 m.

Like **25**, except for very slight differences in height of neck, length of body, and thickness of foot; see above for description and comment.

BRONZE

36. Mirror. Pl. 105.

MF 9811. D. 0.171 m., H. preserved with tang 0.254 m.; L. of tang preserved 0.053 m.; L. of flat attachment 0.03 m.

Back slightly curved, with raised beaded edge; round pinpoint depression at exact center of both sides; tang made in one piece with disc; flat piece decorated with incised palmette, flaring outwards to join disc and terminating in tang, square in section, with nicked sides.

Cf. Davidson, *Corinth*, XII, pp. 180, 182, no. 1307.

GRAVE B 22

The material from this grave appears at first sight to extend from a Corinthian black-glazed skyphos possibly as early as 490-480 B.C. to an Attic lekythos probably by the Emporion Painter possibly as late as 470-460 B.C. In between are pieces both Attic and Corinthian that seem close contemporaries from the decade 475-465 B.C. Given this weight of material from the early years of the second quarter of the fifth century, the lekythos by the Emporion Painter should probably be placed in the same period, and the interment so dated. As for the Corinthian skyphos, either it antedated the other offerings, or this type was produced for a number of years with virtually no change in shape.

²⁴ Here and elsewhere we follow Eva Brann's explanation of this phrase: "ring not really articulated on underside" (*Athenian Agora*, VIII, *Late Geometric and Protoattic Pottery*, Princeton, 1962, p. 29); but for a different, and indeed opposite, use of the same phrase see H. S. Robinson, *Athenian Agora*, V, *Pottery of the Roman Period*, Princeton, 1959, p. 6.

POTTERY, CORINTHIAN

37. Black-glazed skyphos. Pl. 106.

CP 2117. H. 0.063 m., D. rim 0.082 m., D. base 0.046 m.

Plain rim; horizontal handles; low ring foot. Soft buff biscuit; lustrous black glaze thinly applied and badly worn. Purple band just below handles; base reserved, with traces of small circle at center.

Cf. *North Cemetery*, p. 218, no. 268-2, which is very similar, except for a small difference in height, from a grave dated 490-480 B.C.

38. Round-mouthed oinochoe, Type B.
Pl. 106.

CP 2155. H. 0.122 m., D. 0.111 m., D. base 0.07 m.

Squat, globular body; wide misshapen cup mouth with strongly convex lip; short handle; false ring foot.²⁴ Soft buff biscuit; black glaze lustrous but thin and very worn. Base reserved; on shoulder traces of horizontal bands.

Of the several examples of this shape in Miss Palmer's series, this comes closest to resembling no. 296-2, despite its greater size, especially in the distinctive shape of the body. Both are probably near contemporaries from the end of the first quarter of the fifth century or the beginning of the second (*North Cemetery*, pp. 136-137, 221). For the organization of the neck, mouth, and handle, cf. *North Cemetery*, p. 223, no. 274-3.

POTTERY, ATTIC

39. Palmette kylix. Pl. 105.

CP 2115. H. 0.073 m., D. rim 0.135 m., D. base 0.065 m.

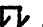
Offset concave lip; "rocking horse" foot

with outer edge concave. Pale red biscuit with smooth reddened surface; lustrous black glaze. Reserved disc decorated with dot and two circles at center of interior; outer edge and resting surface of foot, inner edge of lip, and inside of handles reserved; handle-zone reserved and decorated with chain of palmettes and lotus buds; white added for eyes of chain and tops of palmettes and lotus buds.

Both this and the following palmette kylix are close to several kylikes from Corinth: *North Cemetery*, pp. 158, 160, 229, 230, 302, nos. 297-4, 300-3, D 9-g, the first two from graves dated respectively 475-465 B.C. and 470-460 B.C., the third from a deposit of the second quarter of the fifth century. In terms of the shape and size of the stem, however, the earliest kylix provides the best parallel, the second a *terminus ante quem*. A date about 470 B.C. seems indicated.

40. Palmette kylix. Pl. 105.

CP 2116. H. 0.077 m., D. rim 0.138 m., D. base 0.064 m.

Same as **39**, but palmettes more carelessly drawn. Almost all traces of white have gone. Graffito on bottom of base: .

There is no doubt that both these pots were made in the same workshop and probably by the same man. This is not true of the decoration. Although the designs are similar, the execution looks like the work of different persons. **39** is much neater and more compact, and the tops of the buds rarely go beyond the body into the rim.

41. Black-figured lekythos with chimney mouth. Pl. 106.

CP 2113. H. 0.174 m.

Chimney mouth; shoulder very flat; foot rudimentarily shaped in two degrees. Pale brownish biscuit with smooth reddened surface; good lustrous black glaze. On shoulder double row of rays; on upper body coating of

white slip as ground for decoration in black; man and woman conversing between pairs of circumscribed palmettes lying on their sides; small spirals as filling ornaments in gaps; careless checker-band above; on solid black lower body four wet-incised lines; foot reserved except for black line at top and bottom of edge.

Manner of the Emporion Painter. We are not entirely happy about this attribution, but the subject-matter and the palmettes seem much more at home in the Emporion than the Haimon Group. For one by the painter himself at Corinth, with similar palmettes, cf. *North Cemetery*, p. 231, no. 302-5, from a grave dated 470-460 B.C.

42. Black-figured lekythos with chimney mouth. Pl. 106.

CP 2114. H. 0.165 m.

Misshapen; chimney mouth; shoulder very sharp and sunken; foot rudimentarily shaped in two degrees. Pale brown biscuit with smooth surface; lustrous black glaze pitted and discolored on lower body. On shoulder double row of rays; on upper body very splotchy scene of two women on camp-stools, between them basket or flower pot, from which or behind which grow branches with apples; white used freely for women's flesh, mantles, camp-stools, horizontal bands on basket, and some apples; above scene two rows of black dots irregularly spaced; below three wet-incised lines.

Manner of the Haimon Painter. There are minor differences only between it and Beazley, *op. cit.*, p. 554, no. 403. The shape marks it as later than the lekythoi of the Haimon Group from Grave C 16, certainly as late as 475 B.C., possibly later.

GRAVE B 21

All the material from this grave belongs to the second quarter of the fifth century, and some of it can be placed in the decade 470-460 B.C. On the other hand, the bronze strigil is exactly like one from a grave in Corinth dated

a decade later. However, the grave-group from which it comes is not strictly contemporaneous and shows a spread of several years. The evidence of the skyphos and of the lekythoi seems to us sufficiently weighty to establish a date of 470-460 B.C. for the grave-group as a whole, but we admit the possibility of extending the lower limit to about 455 B.C.

POTTERY, CORINTHIAN

43. Round-mouthed oinochoe, Type A, group i. Pl. 106.

CP 2109. H. 0.131 m., D. 0.122 m., D. base 0.074 m.

Globular body; deep wide-flaring mouth; high vertical handle; short neck set off from body by low plastic ring; false ring foot. Fine buff biscuit; lustrous black glaze. Base reserved; below handle three mottled bands, sometimes merging into one; one red band halfway between handle and foot.

This example seems to have more in common with the pots at the end of Miss Palmer's series than those at the beginning (*North Cemetery*, p. 134, and particularly no. 283-3), but the chronological significance of this resemblance may be minor. Miss Palmer says of this type that "it was produced for nearly fifty years with very little change." A date in the second quarter of the fifth century is, nevertheless, probably justified.

POTTERY, ATTIC

44. Black-glazed skyphos of mastoid shape. Pl. 106.

CP 2108. H. 0.092 m., D. rim 0.13 m., D. base 0.065 m.

Plain lip; handles set diagonally; torus foot. Pale orange biscuit; good black glaze; appearance of broad red band below rim is result of misfiring. Reserved band at joint of body and foot, on resting surface of foot, and inside of handle; base reserved and decorated with central dot and three concentric black circles.

Cf. *North Cemetery*, pp. 156, 230, no. 300-2, with very close similarity in shape and size, from a grave dated about 470-460 B.C.

45. Black-glazed kylix with offset lip. Pl. 106.

CP 2107. H. to rim 0.078 m., D. rim 0.138 m., D. base 0.063 m.

Tall offset lip, very slightly concave; short narrow stem; outer edge of foot convex. Pale pinkish buff biscuit; good black glaze. Reserved on inside of handles, on edge and underside of foot, and inside stem.

Cf. *North Cemetery*, pp. 160, 231, 233, nos. 302-3 and 306-3, which are very close to this kylix. Indeed, if the first were to lose its noticeably thick stem and the second its unusually high lip, there would be little left to distinguish the three. The kylikes from the North Cemetery are dated respectively 470-460 B.C. and 465-455 B.C., and the Lechaion example must fall in the same period.

46. Palmette lekythos. Pl. 106.

CP 2111. H. 0.147 m.

Shallow cup mouth; trochilus foot. Pale orange red biscuit; lustrous black glaze. On shoulder double row of rays; on body three palmettes and four lotus buds on chain; white used on lotus buds and for arcs over palmettes; white dots in hearts of palmettes and in eyes of cable; three wet-incised lines below; foot reserved except for black lines at top and bottom of edge.

Both this and the following lekythos belong to Miss Palmer's group ii (*North Cemetery*, pp. 163-164). They differ from 24 above in the proportion of the height of the neck to that of the body. 24 has a shorter, thinner neck, and a taller body, giving an impression of greater stateliness, 46 and 47 the reverse; thus the latter two appear a little stockier. A comparison of the shapes of the bodies makes it clear that they have more in common with group iii than with 24. They should probably be dated later, in the second quarter of the fifth century,

a more precise date to be determined by the context of the remaining material from the grave.

47. Palmette lekythos. Pl. 106.

CP 2110. H. 0.146 m.

Shape, fabric, and decoration same as 46 above, except that in eyes of cable black dots appear with white superimposed.

The similarity of these two lekythoi indicates that they came from the same workshop, if not from the same hand.

48. Palmette lekythos. Pl. 106.

CP 2112. H. 0.119 m.

General shape, fabric, and decoration same as 46 above, except that there are only three lotus buds alternating with three palmettes, the left hand lotus bud being missing.

While the two larger lekythoi from this grave belong to group ii, the smaller one with its restrained narrowing of the body seems to belong at the head of group iii (cf. *North Cemetery*, pp. 163-164, 236, no. 322-10). It should be placed in the decade 470-460 B.C.

BRONZE

49. Strigil. Pl. 107.

MF 9813. L. 0.24 m., width of blade 0.023 m.

Small fragment missing from end of handle and chips from side of blade. Blade with wide U-shaped section, narrowing towards end; flat handle, narrowing abruptly at top of loop.

This strigil is from Miss Palmer's group i, and is similar to no. 322-3 (*North Cemetery*, pp. 91-95, 236), from a grave dated 460-450 B.C., but containing some pottery that looks earlier.

GRAVE C 10

The pottery from this grave falls in the latter part of the second quarter of the fifth century, with the lower limit at the middle of that cen-

tury, i.e., 460-450 B.C. Also in this grave, in addition to the catalogued objects, were found two strigils, one of bronze, one of iron, both too fragmentary for mending.

POTTERY, CORINTHIAN

50. Round-mouthed oinochoe, Type A.
Pl. 107.

CP 2132. H. 0.141 m., D. 0.133 m., D. base 0.074 m.

Globular body with flattened, sloping shoulder set off from neck by low ridge; deep wide-flaring mouth; tall vertical handle; false ring foot. Buff biscuit; traces of lustrous black glaze all over exposed surface and on base.

Although Miss Palmer has many oinochoai of this general type, this example must join her miscellaneous group on account of its squat shape, sloping shoulder, and the profile of its belly. It is reminiscent of the sixth century type that "occurs sporadically also in the first half of the fifth century," but something about the neck and mouth suggests group iii, which begins in the middle of that century (*North Cemetery*, pp. 134-135).

POTTERY, ATTIC

51. Black-figured cup-skyphos. Pl. 107.

CP 2131. H. 0.084 m., D. rim 0.135 m., D. base 0.074 m.

Slightly offset concave lip; deep bowl; short thick stem; wide-spreading foot with deep groove on edge. Pale pink biscuit; thick black glaze. Band inside lip, in handle-zone, and inside of handles reserved; handle-zone decorated on both sides with satyr and maenad between two palmettes; satyrs appear to be carrying drinking horns, maenads thyrsos; branches in background; beneath scene two painted lines; groove and resting surface of foot reserved, and underside decorated with two central dots and circle. No added color or incision.

The Lancut Group (Beazley, *op. cit.*, pp. 576-579, particularly no. 27, which is similar).

The nearest parallel from Corinth (*North Cemetery*, p. 237, no. 325-4) is more pinched at the base. The date, however, is probably the same, 460-450 B.C.

52. Palmette kylix. Pl. 107.

CP 2130. H. 0.065 m., D. rim 0.135 m., D. base 0.063 m.

Bowl warped, perhaps in firing; lip offset and slightly concave; sturdy flaring foot with convex edge; ridges caused in turning on top of foot. Pale pink biscuit; lustrous black glaze. On interior reserved disc at center decorated with central dot and three concentric circles, and reserved line around inside edge of rim; on exterior reserved handle-zone with traces on each side of six upright palmettes alternating with lotus buds; white on lotus buds and white arcs over palmettes; thick white dots at base of palmettes and lotuses; two reserved bands beneath handle-zone; inside of handles, edge and underside of foot reserved.

Cf. *North Cemetery*, pp. 158, 160, 247, no. 347-2, which has the same shape and distinctive decoration and comes from about the middle of the fifth century.

53. Black-glazed kylix with offset lip. Pl. 107.

CP 2129. H. 0.07 m., D. rim 0.134 m., D. base 0.064 m.

Shallow bowl; deep offset lip; short stem; flaring foot with ridges probably caused in turning. Dark red biscuit; thick black glaze. Edge and underside of foot and inside stem reserved.

This kylix is like **45** from the previous grave, differing only in the profile of the top surface of the foot and in the shallower bowl. However minor these differences may seem when taken separately, they combine to affect the design. **45** is light and well-proportioned, while **53** has too high a lip for the bowl beneath and the foot seems to lack vitality. The latter is probably late in the second quarter of the fifth century rather than early.

54. Ivy lekythos. Pl. 107.

CP 2163. H. 0.225 m.

Cup mouth; trochilus foot. Pale brown biscuit with smooth red surface; good black glaze. On shoulder double row of rays; upper body coated with white, decoration superimposed in black: ivy spray between lattice patterns; below shoulder meander carefully drawn; on solid black lower body three wet-incised lines.

From the workshop of the Beldam Painter (C. H. E. Haspels, *Attic Black-Figured Lekythoi*, Paris, 1936, pp. 181-182, 187). Although the North Cemetery produced many ivy lekythoi, none combined the normal Beldam shape with the meander below the shoulder (*North Cemetery*, pp. 164-165) as one finds, for example, on a lekythos from Würzburg (E. Langlotz, *Griechische Vasen*, Munich, 1932, p. 73, no. 390a). The care with which this piece was made and decorated marks it as early in the series, about 460-450 B.C.

55. Black-glazed lekythos. Pl. 107.

CP 2128. H. 0.167 m.

Cup mouth; heavy disc foot. Orange biscuit with smooth red surface; black glaze thick and even. On shoulder double row of rays; body solid black below reserved band decorated with row of overlapping "z's" between two black lines; narrow reserved band low on body; edge and underside of foot reserved.

Except for the foot the shape is close to that of **54** and therefore to the Beldam workshop. Its date must be assumed from the grave-group as a whole.

GRAVE C 6

Here the Attic material gives a general date only, the second half of the fifth century. But one of the two Corinthian pieces makes greater precision possible since it was made about the middle, or in the early third quarter, of the same century. Because the third quarter of the

fifth century is common to two pots and is not contradicted by the third, we accept it as the date of the grave.

POTTERY, CORINTHIAN

56. Semi-glazed skyphos with heavy foot.
Pl. 108.

CP 2127. H. 0.107 m., D. rim 0.135 m., D. base 0.075 m.

Heavy ring foot; plain rim. Buff biscuit. Black glaze, poorly preserved, on foot, upper half of body and interior; dark red stripe at joint of foot and body; base reserved and decorated with three widely spaced concentric circles.

Cf. *North Cemetery*, pp. 124, 243, no. 337-3, from a grave of the middle of the fifth century. Miss Palmer says that pots of this type "extend down into the third quarter."

57. Banded miniature lekythos. Pl. 108.

CP 2126. H. 0.079 m., D. 0.039 m., D. base 0.023 m.

Fat body; spreading lip, slightly convex, flat on top; angular shoulder; flaring foot with spiral marks on base where removed from wheel. Greenish buff biscuit. One band of brown paint on lip, two on body, one on foot, three on back of handle.

Of this type Miss Palmer writes that "the series extends throughout the second half of the fifth century with no significant development in shape" (*North Cemetery*, p. 140).

POTTERY, ATTIC

58. Squat lekythos. Pl. 108.

CP 2256. H. 0.096 m., D. restored 0.059 m., D. base 0.051 m., D. mouth 0.029 m.

Fat body; wide cup mouth; narrow neck; low vertical handle; low ring foot. Pale brown biscuit; surface smoothed and reddened. Traces of lustrous black glaze over most of body.

Examples of this shape from the North

Cemetery belong mostly to the last years of the fifth century (*North Cemetery*, p. 165), the same date given to a related piece from the Athenian Agora by P. E. Corbett (*Hesperia*, XVIII, 1949, p. 326, no. 42). However, the type seems to have flourished in the third quarter as well (cf. L. Talcott, *Hesperia*, IV, 1935, p. 509, no. 53, and, most recently, *Hesperia Art*, XXXIII, A 6, a superbly decorated piece and therefore a parallel for the shape only, dated 440-430 B.C.).

GRAVE C 11

The material from this grave is securely placed in the last quarter of the fifth century, at a time when relations between Athens and Corinth were anything but friendly. Thus for the first time in our series of graves from the fifth century we find no Attic pots. Instead, Corinthian imitations of Attic lekythoi have taken their place. Apparently the power of tradition was so binding that even when at war with Athens Corinthians still demanded that their dead be buried with pots that looked Attic.

POTTERY, CORINTHIAN

59. Semi-glazed skyphos, group ii. Pl. 108.

CP 2135. H. 0.069 m., D. rim 0.086 m., D. base 0.046 m.

Plain lip; low flaring ring foot. Buff biscuit; thin lustrous black glaze. Interior and upper half of exterior solid black, sloppily applied; lower exterior and underside of base reserved, with bands of black, one a little above foot, one on edge of foot; on base one wide and one narrow ring with central dot.

This and the following skyphos are from a type very popular from the middle of the fifth century to the early fourth (*North Cemetery*, pp. 124-126). This particular shape is best paralleled in the last quarter of the fifth.

60. Semi-glazed skyphos, group ii. Pl. 108.

CP 2134. H. 0.071 m., D. rim 0.086 m., D. base 0.043 m.

Shape, fabric, and decoration same as **59** above.

- 61.** Round-mouthed oinochoe, Type A.
Pl. 108.

CP 2133. H. with handle 0.093 m., D. 0.069 m., D. base 0.047 m.

Misshapen cup mouth with flaring edge; flat shoulder; squarish body; false ring foot. Buff biscuit; lustrous black glaze over almost all exterior. Reserved band of varying width above base; underside of base reserved.

This oinochoe in shape is intermediate between Miss Palmer's groups ii and iv, with its mouth characteristic of iv, but its body reminiscent of late examples from ii (*North Cemetery*, pp. 134-136). It probably belongs, therefore, to the fourth quarter of the fifth century.

- 62-68.** Group of seven white-ground lekythoi, group iii. Pl. 108 (**62**, **63**, **64**, **67** illustrated).

CP 2136. H. 0.185 m.

CP 2137. H. 0.187 m.

CP 2138. H. 0.186 m.

CP 2139. H. 0.185 m. (approximately)

CP 2140. H. 0.191 m. (approximately)

CP 2141. H. 0.176 m.

CP 2142. H. preserved 0.154 m.

Pieces missing because of poor condition; many fragments crumbled on removal from grave so that in three cases it was impracticable to restore pot. Cup mouth; steep shoulder; disc foot with sides varying from slightly convex to slightly concave. Very soft buff biscuit. Black glaze fired reddish on mouth, neck and handle, lower body, and upper surface of base; shoulder and main part of body coated with thick white slip; superimposed decoration executed with bright red substance that has crumbled; probably all were decorated on shoulder but traces of lotus buds remain only on **64**; large upright palmette can be distinguished with varying degrees of clarity on bodies of **64**, **66**, and **68**.

This group in shape and decoration is typical of the bulk of Miss Palmer's group iii. It belongs to the last quarter of the fifth century, after 421 B.C. (*North Cemetery*, pp. 141-143, and 121-122 for the absolute chronology).

GRAVE B 9

The Attic material does not admit of a date for this grave closer than the middle, or third quarter, of the fourth century.

POTTERY, CORINTHIAN

- 69.** Round-mouthed oinochoe, Type D.
Pl. 109.

CP 2100. H. 0.086 m., D. 0.078 m., D. base 0.053 m.

Squarish body with convex sides; widely flaring lip; well-defined sloping shoulder; simple vertical handle from shoulder to rim; slightly spreading foot. Green biscuit; traces of black glaze over much of neck and upper body; reserved band of varying width on lower body. Deliberately made hole in wall of lower body.

There is no exact parallel from the North Cemetery for this example of a type common in graves of the fourth century. The profile of neck and shoulder, however, suggests that it belongs near the end of the series (*North Cemetery*, pp. 138-139).

POTTERY, ATTIC

- 70.** Ovoid skyphos. Pl. 109.

CP 2099. H. 0.09 m., D. 0.078 m., D. base 0.036 m.

Tall tapering body; plain lip; small flaring foot. Pink biscuit; lustrous black glaze all over.

A group of similar skyphoi was found at Corinth, which Miss Palmer dates "at the earliest to the middle of the fourth century," "contemporary with those found in Athens in pyres dated to the middle and third quarter of the fourth century" (*North Cemetery*, pp. 155, 122).

71. Lamp. Pl. 109.

L. 4101. H. 0.035 m., L. 0.087 m., D. 0.059 m.

Sides nearly straight and sharply angled to low ring foot; broad slightly convex rim with deep groove at outer edge; nozzle long and deep; pierced lug on right side. Red biscuit; metallic black glaze inside and out. Reserved base, side of foot, and groove on rim.

This type of lamp, Howland 25 B (Broneer Type VII), was produced in the second half of the fourth century and in the first quarter of the third according to R. H. Howland, *Athenian Agora*, IV, *Greek Lamps and Their Survivals*, Princeton, 1958, pp. 72-73. Cf. *North Cemetery*, pp. 160, 280, 307, nos. 446-5 and D 30-f, both from the middle of the fourth century.

SILVER**72. Bodkin. Pl. 109.**

MF 9812. L. 0.151 m., width 0.015 m.

Complete but broken across eye. Flat in section, with rounded edges; tapers from oval eye to blunt rounded point; sharp head.

Cf. W. Deonna, *Exploration archéologique de Délos*, XVIII, *Le mobilier Délien*, Paris, 1938, p. 265, where a bodkin of silver is reported, and note 1 for references to bodkins as grave-offerings. We have not found an exact parallel for this shape.

OTHER FINDS

In addition to the grave-groups described above, we found three decorated fragments of Attic pots and one bronze Corinthian coin, all of which should be included in the catalogue, even though their provenience is not precisely established.

73, a black-figured sherd, was found in disturbed soil above the largely destroyed sarcophagus of Grave C 14. **74**, a red-figured fragment, came from the area of our one example of a tile grave, C 18, which had been almost totally destroyed by the weight and action of

the bulldozer. Only one whole pot was recovered, a Corinthian tall trefoil oinochoe (CP 2160) from the third quarter of the fifth century, possibly the date of the tile grave. The remaining fragments showed too large a range of time to belong to a single interment, and some of them, including this figured piece, are probably intrusive. **75**, another red-figured sherd, came from Grave C 11, the cover-slab of which was destroyed. This fragment was found in the disturbed earth that filled the upper half of the sarcophagus. The bronze coin, **76**, was found in Grave C 5, which also yielded one small Corinthian bowl (CP 2161) from the middle of the sixth century and a quantity of sherds. Some of the breakage and disturbance was caused by the collapse inwards of part of the cover-slab.

POTTERY, ATTIC**73. Fragments of a black-figured kantharos. Pl. 109.**

CP 2261. Preserved dimensions 0.042 m. by 0.049 m.

Three joining fragments from body immediately above sharp offset marking beginning of bowl. Orange-red biscuit with poor surface; interior coated with black glaze, mottled; exterior decorated with thin brownish glaze. On uppermost of three border lines, youth with spear between two draped figures facing away from him; meaningless letters placed vertically alongside spear. White added for alternate folds of garment of right hand figure.

Third quarter of sixth century: cf. J. Boardman, *B.S.A.*, LIII-LIV, 1958-1959, pp. 167-168, no. 73, with references, and also Beazley, *op. cit.*, pp. 191-192, The Group of Louvre F 81, which is close in style.

74. Fragments of a red-figured open vessel. Pl. 109.

CP 2260. Preserved dimensions 0.154 m. by 0.101 m.

Seven joining fragments. Red biscuit; interior coated with streaky black glaze; exterior solid black glaze. Symposium, with girl in chiton and mantle standing beside occupied couch and holding out pipes in left hand; details in black and reddy brown; broad contour line around figures and couch.

Second quarter of fifth century; while the general theme of a symposium is common (cf. for example P. Jacobsthal, *Göttinger Vasen*, Berlin, 1912, pp. 63-65, figs. 84-86), it is unusual to find a flute player so bundled and unprepared to perform.

75. Fragment of red-figured hydria. Pl. 109. CP 2262. Preserved dimensions 0.077 m. by 0.05 m.

Fragment from shoulder. Red biscuit; thick

lustrous black glaze on exterior. Draped figure facing right and leaning on staff; below, two reserved bands.

About the middle of the fifth century.

COIN

76. Bronze Corinthian coin. Not illustrated.

Obverse: head of Roma turreted. Slight indications of letters, probably to be read as ROMAE ET IMPERIO.

Reverse: [L. Can. Agr]ippae IIvir [Co]r. Clasped hands holding two ears of corn and poppy head.

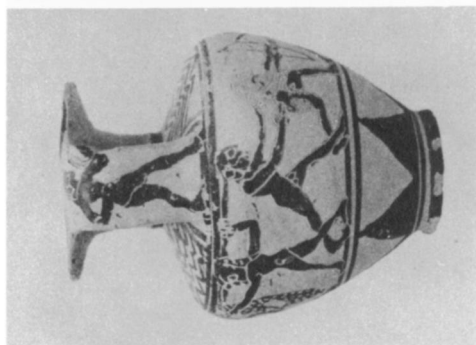
Issued in A.D. 68/9 under the duovir L. Caninus Agrippa (K. M. Edwards, *Corinth*, VI, *Coins 1896-1929*, Cambridge, 1933, p. 24, no. 68).

C. W. J. AND MARY ELIOT

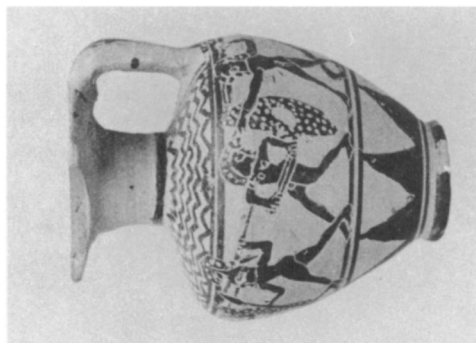
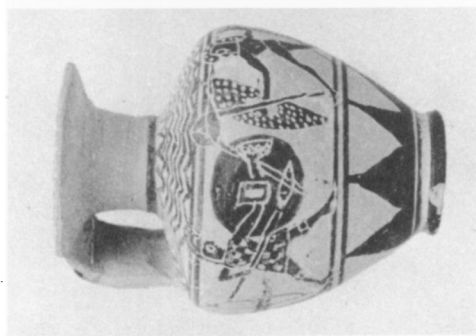
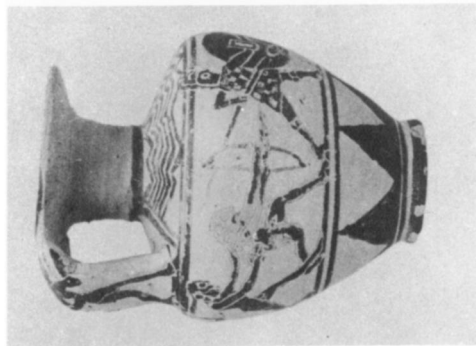
UNIVERSITY OF BRITISH COLUMBIA



1 (1:1)

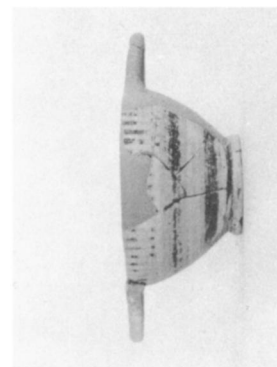


2 (1:1)

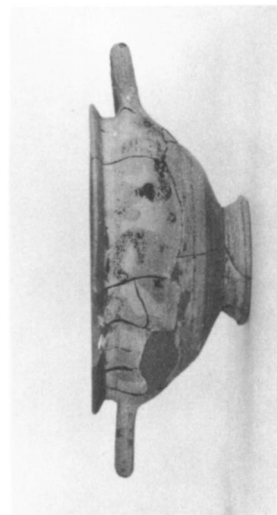


2

Grave B 20



3



4

Grave C 15



5



6

Grave C 14



7



9

Grave C 8



10a

(1:1)



10b

Grave C 8



13



14



15



16



17



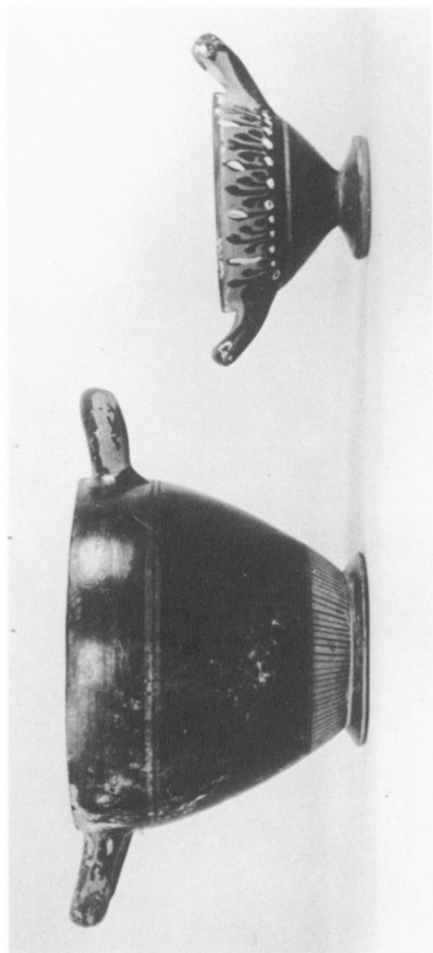
18

Grave C 3



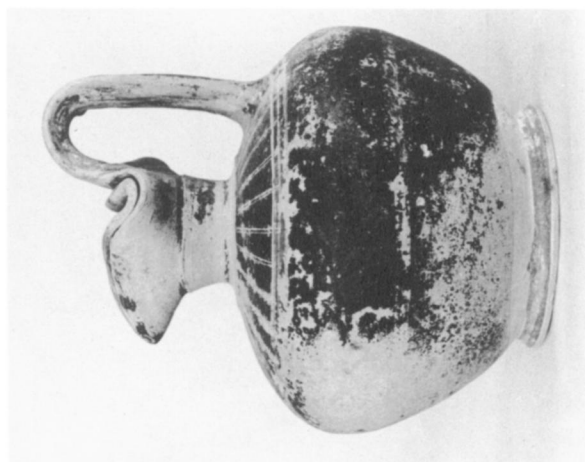
19

20



29

30



28

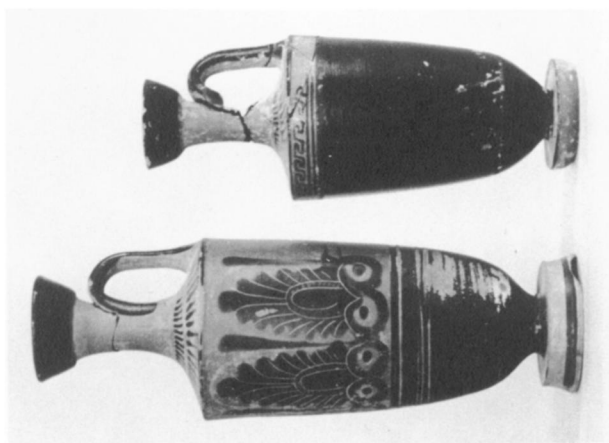


27



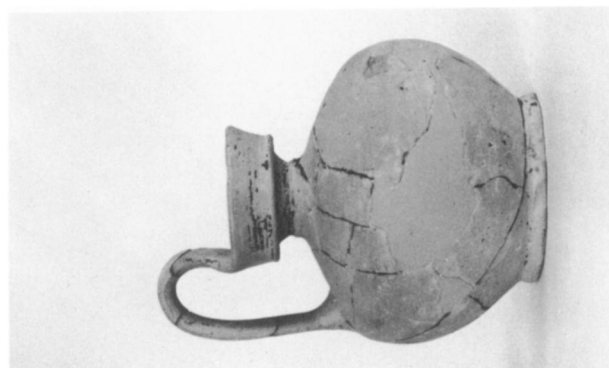
26

Grave C 16



25

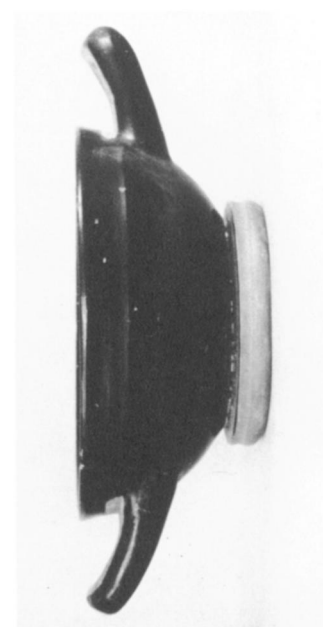
24



21



23



22

Grave B 10

C. W. J. AND MARY ELIOT: THE LECHAION CEMETERY NEAR CORINTH



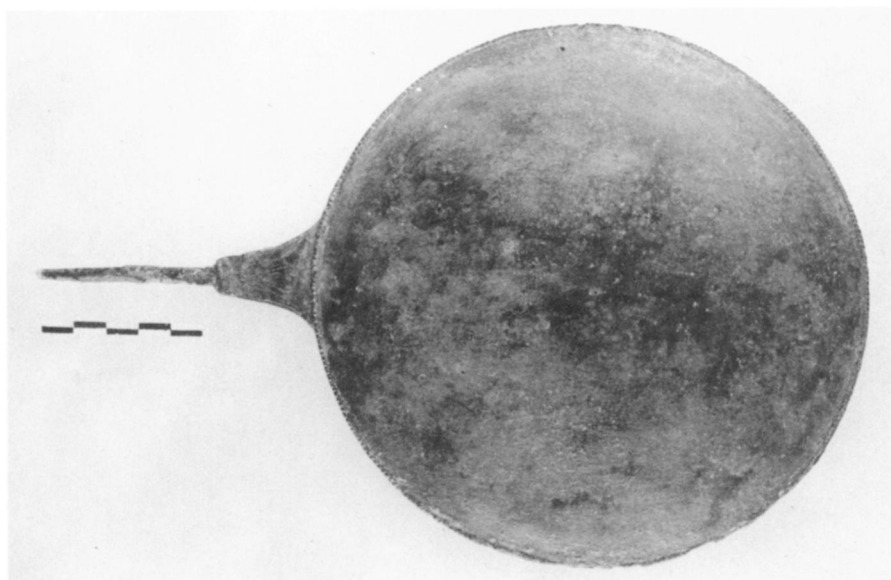
33

32

34

31

35

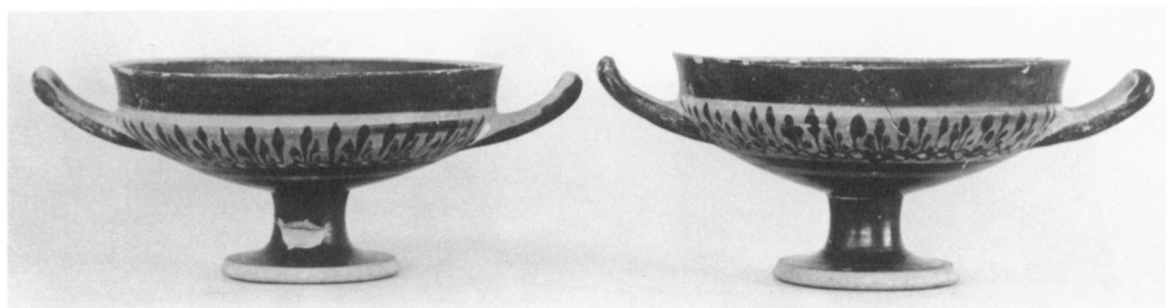


36



36

Grave C 16



39

40

Grave B 22

C. W. J. AND MARY ELIOT: THE LECHAION CEMETERY NEAR CORINTH



37



38

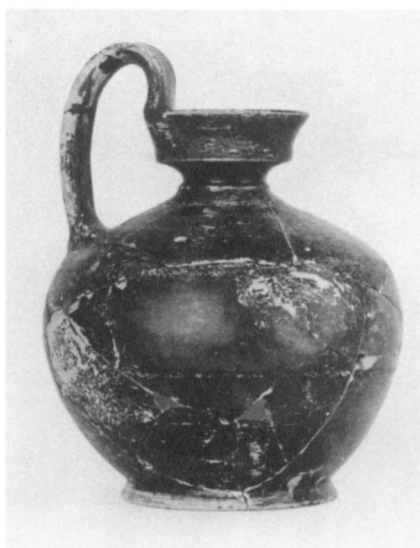


41



42

Grave B 22



43



48

46

47

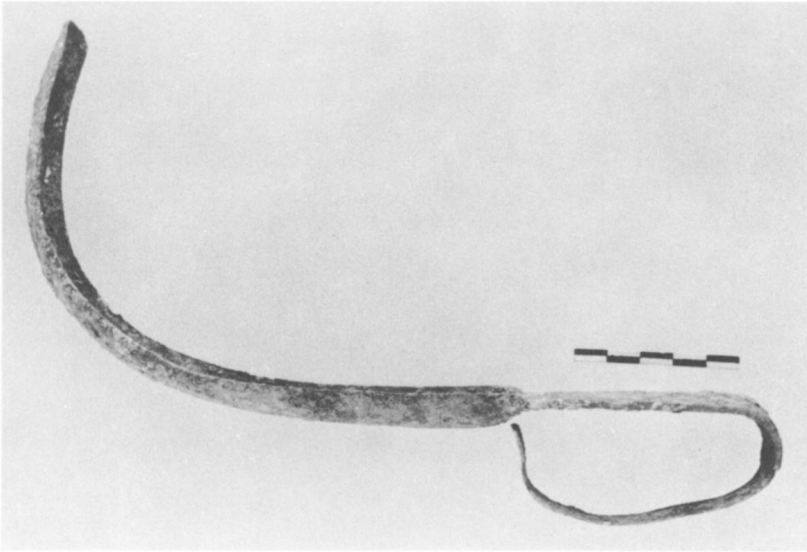


44

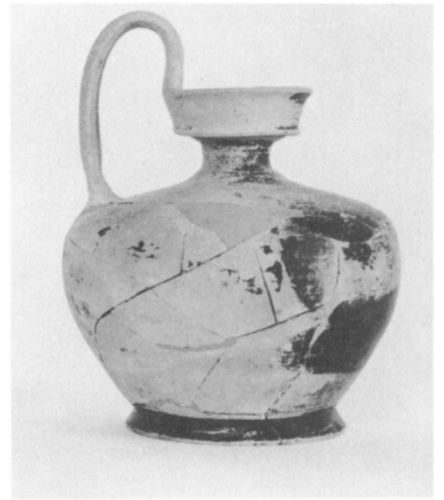


45

Grave B 21



49
Grave B 21



50

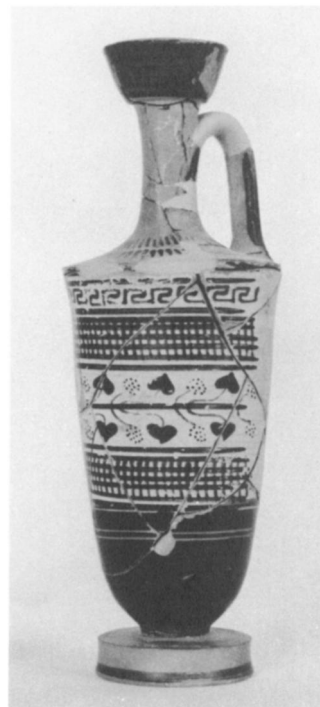


51

52



53



54



55

Grave C 10



56



58

57

Grave C 6



59



60



61



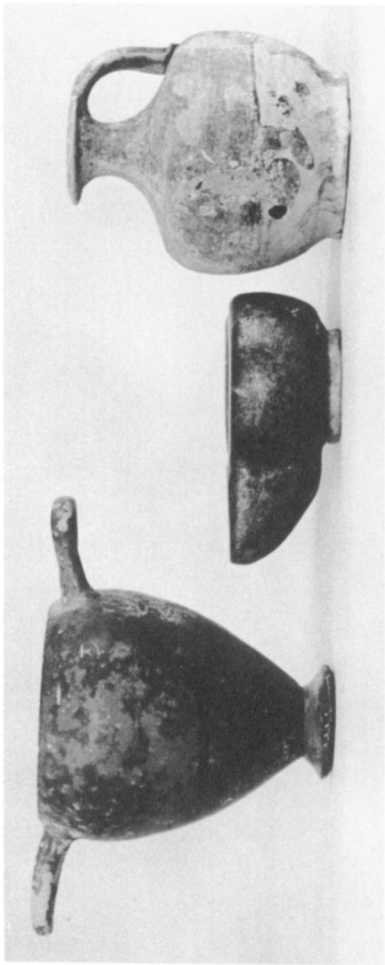
64

67

63

62

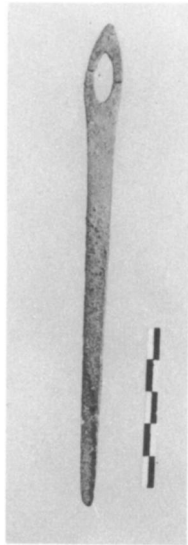
Grave C 11



69

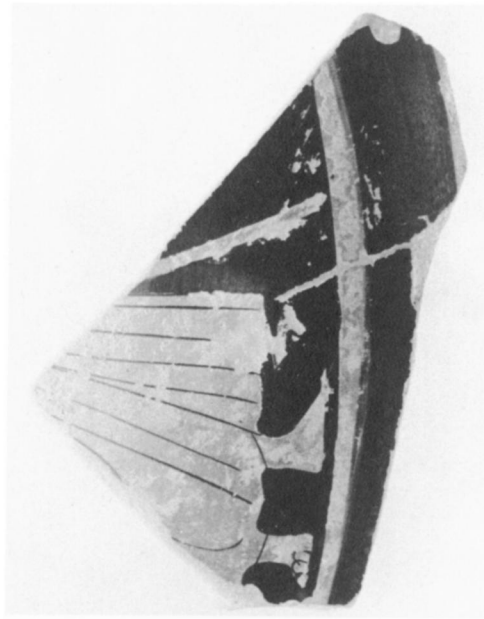
71

70

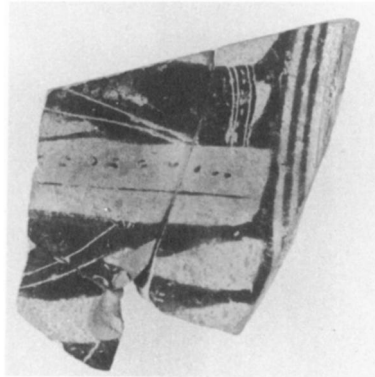


72

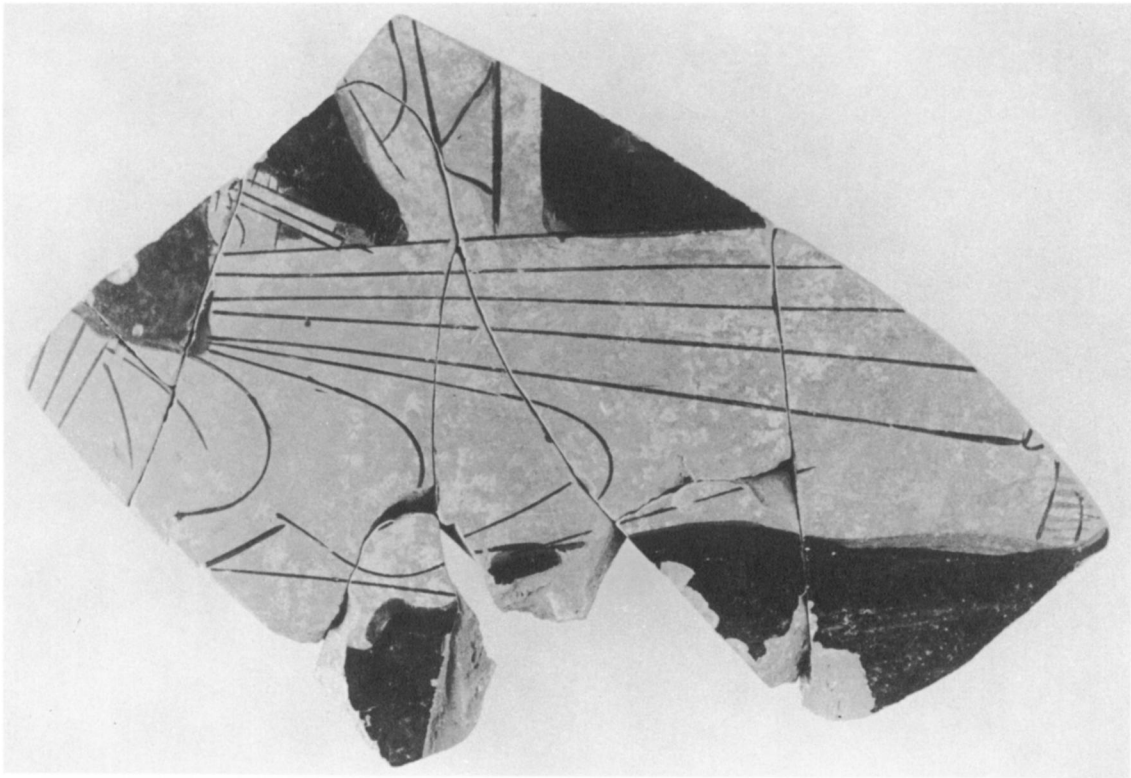
Grave B 9



75 (1:1)



73 (1:1)



74 (1:1)