

THE ATTIC QUOTA-LIST OF 453/2 B. C.

(PLATES 63-66)

JOHN McK. CAMP II at once recognized that the fragment of the quota-lists uncovered June 24, 1972 belonged in List 2 above fragment 10 and preserved parts of columns VII (obverse face) and VIII (right lateral face). At the time at which he submitted his report (with commendable promptness), although the stone had been transported to the Epigraphic Museum, it had not been incorporated physically into the *lapis primus*.¹ The pleasant responsibility of supervising this reconstruction became mine in the summer of 1974.²

To remove the surrounding plaster and to place the new fragment, which I shall call 10a, above fragment 10 embodied a simple operation, one that led, however, to a number of unexpected and inexorable conclusions.

It became immediately obvious that between Camp's line 12 in columns VII (Χαλχεδ[όνιοι]) and VIII (a triangular apex in the first stoichos) and line 13 in *A.T.L.* I and II (ΔΓ[ΙΙΙ] and [Λεφσ]ιμάριοι) one line must be inserted.³ This means that columns I-IX of List 2 contained 18 rather than 17 names. The projection at the bottom of fragment 10a that governs the distance between its surface and that of fragment 10 may be seen in Camp's plate 63, b and c and my Plate 66.

Camp reads the top line of column VIII (right lateral surface) as [Ἀ]β[υδανοί], which falls in the same line as *hairaioi* in column IX (preserved on fragment 11)⁴ and must therefore, like *hairaioi*, be the first name in the column. The relationship between fragments 10a and 11 is precisely determined; if confirmation were needed, it would be supplied by the quota Η[Ρ] in VIII, 7 (fragment 10a), which falls in place alongside [Γαλέ]φσιοι in IX, 7 (fragment 11). Plates 64 and 65 illustrate fragment 10a set in plaster as it appears now amid its neighbors.⁵

To illustrate the relationship, I transcribe columns VII-IX.⁶

¹ *Hesperia* 43, 1974, pp. 314-318 with plate 63, b and c. The captions on the plate are reversed: b in fact shows the right lateral surface and c the obverse.

² A generous grant from the Canada Council facilitated my visit to Athens. The work of reconstruction in the National Epigraphic Museum was accomplished by kind permission of the Director, Mrs. Dina Peppas-Delmouzou, and with the indispensable collaboration of her assistant, Charoula Karapa, and the skilled and cheerful staff. I also express my thanks to T. Leslie Shear, Jr. for his generosity in providing access to fragments discovered in the Agora and to John Camp, who freely discussed with me his readings and interpretations; they responded promptly to my requests for photographs and squeezes.

³ B. D. Meritt, H. T. Wade-Gery, M. F. McGregor, *The Athenian Tribute Lists* I, Cambridge, Mass., 1939 and II, Princeton, 1949, List 2.

⁴ See the drawing in *A.T.L.* I, pl. III.

⁵ I owe these photographs to Mrs. Peppas-Delmouzou.

⁶ Line 1 is occupied by the prescript, which is cut wholly on the obverse face (columns I-VII).

	VII		VIII		IX
2	-----	-----	-----	[.]ε[-----]	[HHH] <i>hairaioi</i>
	[.]Ϝ ₁	-----	[HHH]	Κεβ[ρένιοι]	[Ϝ] <i>Νεοπολίται</i>
	ΔΔΓ	-----	[H]	Σκάφ[σιοι]	[HH] <i>Ὀλύνθιοι</i>
5	ΔΓΗΙΙΙ	Ναρ[ισβαρές]	[ΔΓ]ΗΙΙΙ	Παισεν[οί]	[H] [Μ]εκυβερναῖοι
	ΠΗΗΗ	Θασσθ[αρές]	[H]Ϝ	Κλαζομέγ[ιοι]	----- [Σε]ρμυλιές
	[Ϝ]	Ἰγρες	Η	Φ[ο]καιές	Η[Ϝ] [Γαλέ]φσιοι
	Ϝ	Καύνιοι		παρὰ [.]ε[.]κο	Ϝ [Δικαιο]πολίται
	[Ϝ]	Πασσανδ[ές]	ΗΗϜ	Φ[ο]καιές	----- [Κυζζικ]ενοί
10	ΔΔΔΗΗΗ	Κρνές	[X]H[H]	Τορον[αῖοι]	----- [... ⁵ ...]εσ
	H	Στρεφσαῖ[οι]	[H]	Μυρι[ναῖοι]	-----
	ϜΗΗΗ	Χαλχεδ[όνιοι]	-----	^ [-----]	-----
	-----	-----	-----	-----	-----
	ΔΓΗ[ΙΙΙ]	-----	-----	[Λεφσ]ιμάνιοι	-----
15	ΠΗ<Π>Η	Ἀ[στυρενοί]	[ΔΔΔΔΗΙΙΙ]	[Κα]σολαβές	-----
	ΔΓΗΙΙ	Γρυν[ειές]	-----	[Σ]τόλιοι	-----
	ΔΓΗΙΙ	Πιτανα[ζοι]	-----	Πολιχνῖται	-----
	HϜ	Ἀστακεν[οί]	-----	Σίγγιοι	-----
19	ΗΗ	Σπαρτόλιο[ι]	[H]	Σαναῖοι	-----

VII, 3: the sign for 50 drachmai is cut in the second stoichos.

7: I follow Camp in identifying Ἰγρες with Πίγρες (Πίκρες, Πίτρες) of Syangela and I restore the quota of half a talent.

11: observe that the single figure of the quota is not cut flush with the left-hand margin.

12: in agreeing with Camp's reading I notice in the third stoichos the perceptible slope of the vertical, which indeed falls in line with the vertical of the rho in the line above: the letter must be lambda.

VIII, 2: Camp reads [Ἀ]β[υδενοί]. I believe, however, that the extant letter is epsilon. The vertical is completely preserved but only part of the top horizontal. The middle and lower horizontals, fortunately, are wholly visible; they are straight, and each comes cleanly to an end, whereas the lower loop of beta should be formed by sharply slanting incisions (as in the beta of [Μ]εκυβερναῖοι in IX, 5; *A.T.L.* I, p. 15, fig. 12).

IX, 9: for the restoration [Κυζζικ]ενοί in place of [Κλαζομ]ένιοι, now made impossible by the new entry in VIII, 6, see Camp (footnote 1), p. 317 with note 16.

The addition of fragment 10a and the consequent increase in the length of columns I-IX swell the tributaries of 453/2 to 170 (in 172 lines).⁷ The extra name to be restored in column I should be sought in the "appendix" of List 4, V;⁸ I suggest [Τελάνδριοι] with a quota of 100 drachmai plus a few obols.

The insertion of fragment 10a into the stele led to a further revelation: the upper

⁷ List 2 had already been recognized as unusually long in *A.T.L.* III, Princeton, 1950, p. 265.

⁸ *A.T.L.* III, pp. 8-9.

fragments (1, 1a, 3, 4, 5, 6)⁹ were not set correctly in the plaster. They lay 0.055 m. too high. There is no physical join between these upper fragments and the rest of the monument. Fragment 6 is therefore crucial because it preserves parts of the first ethnics inscribed in List 2, columns II and III: [Κο]δαπές and [Ξερμυλ]ιῆ[ς].¹⁰ These must, of course, be placed in the same line as [.]ε[---] in column VIII and *hairaioi* and *Πελειᾶται* in columns IX and X.¹¹ Miss Karapa and I, aided by the skilled experience of Panagiotis and Stelios in the association of related fragments, dismantled the top of the stele and rebuilt it. The texts and the stele are now in agreement.¹²

The relationship between fragment 1 and the other fragments of the left lateral surface that comprise List 14 is also affected, for the former has been lowered 0.055 m. Here we found that, although fragment 1 was occupying a false position, the text had been restored with satisfying accuracy in *A.T.L.* I and II.¹³

Since the beginning of the new excavations in the Agora three fragments (1a, 10a, 181) have been added to the *lapis primus*, to Lists 1, 2, and 15 respectively.¹⁴ Each has been made accessible to scholars with admirable expedition and each has made a significant contribution to knowledge. I very much hope that archaeological investigation will continue in the Agora and I look forward, as do all scholars, to further revelations.

MALCOLM F. MCGREGOR

UNIVERSITY OF BRITISH COLUMBIA

⁹ 1a is the recently discovered fragment published by Meritt, *Hesperia* 41, 1972, pp. 403-417, pls. 99 and 100.

¹⁰ See the drawing in *A.T.L.* I, pl. III.

¹¹ In this respect the restorations in *A.T.L.* I and II and the drawing in *A.T.L.* I, plate III are correct. The error occurred in the computation of the distance between [...⁶...]ες, the last preserved entry of column IX, and [Λεφσ]ιμάνοι, the first column VIII, as two lines rather than three.

¹² Plate 63 shows the obverse face after correction.

¹³ See also *A.T.L.* I, pl. XIV, where the drawing needs no adjustment. When the erroneous physical reconstruction of the top of the stele occurred, I do not know. It is to me significant that the computations and drawings of *A.T.L.* I and II reveal merely a one-line error in the measurement of the gap (in 1938) between fragments 11 and 10. Possibly the stele was not in agreement with the restored texts then. I have heard that the top fragments were taken from the stele at some time during the last decade; if this is true, the replacement may have been made carelessly. See Meritt's comments, *Hesperia* 41, 1972, p. 405, note 10.

¹⁴ For fragment 1a see Meritt, *op. cit.* (note 9 above); for fragment 10a Camp, *op. cit.* (note 1 above); for fragment 181 Meritt, *Hesperia* 41, 1972, pp. 420-421, and McGregor, *Hesperia* 45, 1976, pp. 171-172.

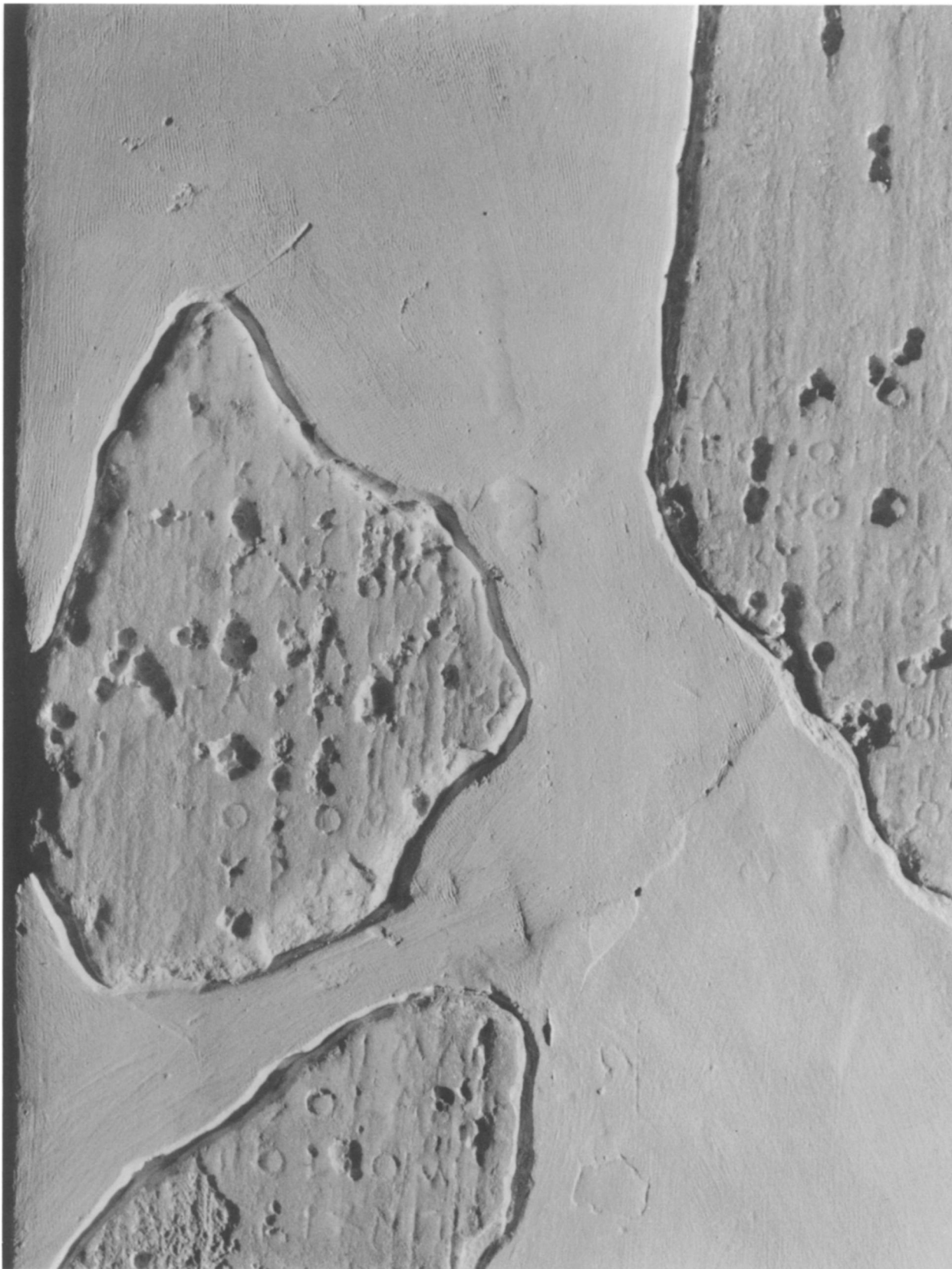


The upper fragments of the *lapis primus*, obverse face (Lists 1 and 2) as they now appear

MALCOLM F. MCGREGOR: THE ATTIC QUOTA-LIST OF 453/2 B.C.



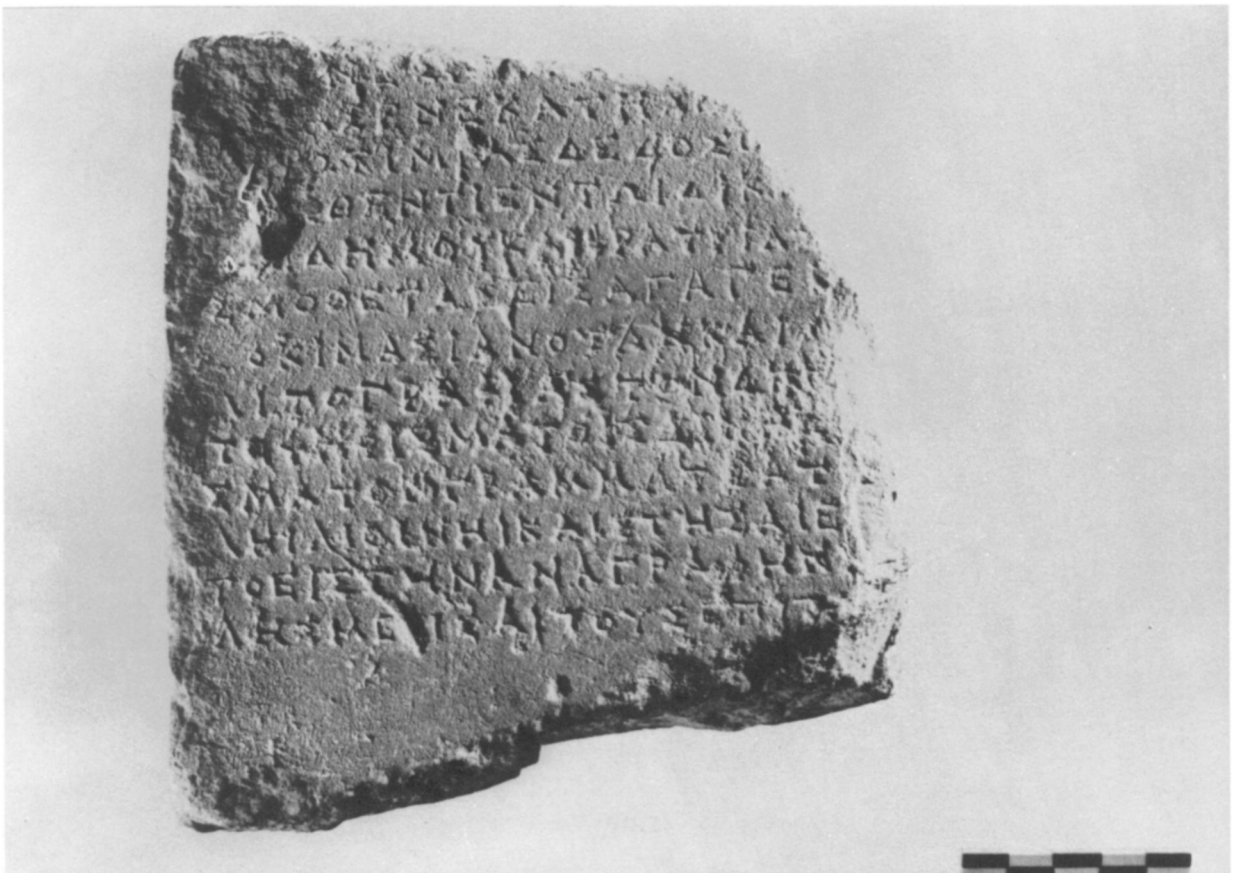
The obverse face of fragment 10a set in plaster



The right lateral face of fragment 10a set in plaster



MALCOLM F. MCGREGOR: THE ATTIC QUOTA-LIST OF 453/2 B.C.



STEPHEN V. TRACY: GREEK INSCRIPTIONS FROM THE ATHENIAN AGORA