

A TIBERIAN POTTERY DEPOSIT FROM CORINTH

(PLATES 28–34)

εἰς μνήμην τοῦ Γεωργίου Κάχρον

EXCAVATIONS in the southwest corner of the Forum at Corinth in the spring of 1976 revealed the northern part of a large Roman building lying just outside the limits of the Forum, south of the south tower of the West Shops. This building was first discovered in a test trench in excavations in the spring of 1960¹ and its late Roman phases were revealed in 1974 and 1976.² Excavation of the earlier Roman phases of the building produced the Tiberian floor deposit discussed here and another large group of pottery of later date which will be published separately.

The Roman Cellar Building, as this structure is now called, lay immediately to the west of the north-south road which came from Sikyon and continued towards Acrocorinth, forming the original western boundary of the Forum. Minor streets bordered the northern and western sides of the building; it probably continues to the south beyond the present limits of excavation.

Three rooms of the Roman Cellar Building have been completely excavated (Fig. 1). A deep cellar, which is entered by a stair at its southeast corner, originally occupied the northern part of the building for its full east-west width; the ground-floor level of the room(s) which lay above this can still be established from the cuttings for the ceiling beams of the cellar and from the preserved threshold by which the building was originally entered from the north. To the southwest of the cellar lay a smaller, nearly square room (room 2 in the preliminary report), and here a large group of pottery was found lying broken on the floor and mixed with the debris of a fallen wall. A threshold at the southeast corner of the room possibly gave access to the southern part of the building. The foundation of this threshold is continuous with the wall between rooms 2

¹H. S. Robinson, "Excavations at Corinth, 1960," *Hesperia* 31, 1962, pp. 111–112.

²C. K. Williams, II, and J. E. Fisher, "Corinth 1974: Forum Southwest," *Hesperia* 44, 1975, pp. 9–10; C. K. Williams, II, "Corinth 1976: Forum Southwest," *Hesperia* 46, 1977, pp. 41, 58–62.

The sigillata from this deposit formed part of a study of the sigillata and local imitations from the post-War excavations at Corinth submitted to Bryn Mawr College as a doctoral dissertation. I express my gratitude to Charles K. Williams, II, Director of the Corinth Excavations, who offered me the material for publication and did everything possible to facilitate my research, to Nancy Bookidis and Joan Fisher of the Corinth staff who advised me, respectively, on problems of inventory and identified the coins from the deposit, to Richard and Glynnis Jones of the Fitch Laboratory of the British School at Athens who carried out the analyses of the material reported in the Appendix. The final work on the Catalogue was done in Corinth in 1977/1978 while I held the George Kachros Memorial Fellowship from the American School of Classical Studies at Athens. Ioannidou and Bartzioti took the photographs, and the profiles are the work of Diane G. Peck, Marsha Palaima, and Helen H. Townsend.

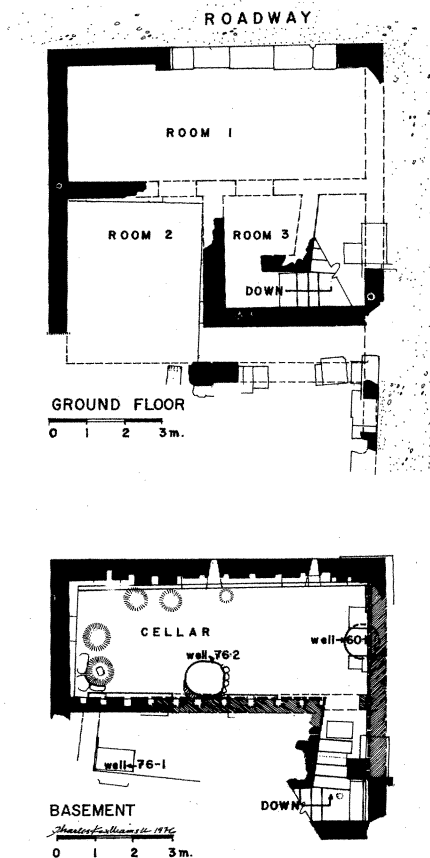


FIG. 1. Plan of the Roman Cellar Building.

and 3 and must belong to the original construction of the building; its condition suggests that the east-west wall immediately to the south, robbed out in the late Roman period, was the south wall of room 2. The level of the threshold (+82.536 m.) establishes the upper limit for the original floor of room 2.

The Roman Cellar Building as presently exposed was probably constructed by excavating a large hole, deep and regular in its northern part where the cellar was to be, sloping irregularly and steeply upwards toward the south. The walls of the cellar and the foundations of the building were then constructed against the sides of the hole and in its interior. Room 2 and the center of the stair in room 3 were then filled to the level of the ground floor and a floor of crushed bedrock was tamped down in room 2. The deep fill below the floor of the room eventually settled; when it was excavated, the floor of the room sloped substantially upwards toward the west wall and the northwest corner of

the room.³ This settling would have been reinforced if, as seems probable, there was also a doorway in the northeast corner of the room, providing access from the room over the cellar; traffic through the room would then have compacted the eastern part of the subfloor layers.

The pottery deposit in room 2 was 0.35/0.40 to 0.57 m. thick (the top had been unevenly cut away by later Roman construction) and consisted of broken whole pots and sherds mixed with mud-brick debris; most of the pottery was concentrated in the lower 0.15 or 0.20 m. of the stratum although joins occurred throughout; some of the pots were found lying parallel to the floor, others were jumbled at an angle, and the large Arretine plate (5) lay vertically on edge. Although the mud-brick debris ran against the west, north and east walls of room 2 and over the southeastern threshold, few sherds were found in the northern part of the deposit and the concentration of whole pottery increased toward the south where it terminated at the robbing trench of the probable south wall of the room. It is therefore probable that the pottery, which had been stored along the south wall of the room, was thrown to the floor by an earthquake when the upper, mud-brick wall of the building collapsed on top of it. This interpretation is supported by evidence for the rebuilding of the west wall of the building at this time and the partial resetting of the ceiling of the cellar.⁴

THE FLOOR DEPOSIT

Treatment of the material

As the pottery deposit was being excavated the excavator noticed that along the east wall of room 2 one or two sherds of pottery of the 6th century after Christ had appeared with the pottery-deposit material. An attempt to isolate this late disturbance was unsuccessful. When the pottery had been mended and was picked up for storage all baskets which were contaminated with later material were lotted as lot 1976-99 and all uncontaminated baskets as lot 1976-98. No pottery from this deposit was thrown away and the contamination appeared only at one point along the east wall of the room.

The criteria for the selection of material to be included in the published catalogue were the following: 1) All Hellenistic (pre-146 B.C.) pottery was omitted; this consisted of non-joining single sherds making up one fifth by volume of the material in lots 1976-98 and 1976-99; joins to sherds in the construction fill showed that it derived from this source (and possibly also from the mud brick). 2) All the complete and nearly complete pottery was included. 3) Vessels with complete profiles or which were partially mended from a number of fragments were included unless they duplicated more

³This is clear in the notebook. Because the western floor was thin and discontinuous, and the pottery deposit continued on the eastern side, the excavator continued to excavate the whole room. The western floor and the top of the underlying construction fill were thus removed with the eastern part of the pottery deposit. This explains why no further floor was found in the western part of the room and accounts for fragmentary Hellenistic pottery in the floor deposit lot, a few sherds of which joined to others in the construction fill.

⁴Williams, *Hesperia* 46, 1977, p. 61.

complete material. 4) An attempt was made to include a representative of each ware present in the deposit. 5) Single sherds were omitted unless called for by 4. 6) Lamps and glass were selected on the same basis as the pottery, but all the miscellaneous finds were included except a Classical spindle whorl and a Neolithic celt.⁵ All of the pieces presented in the Catalogue come wholly or partly from the uncontaminated lot 1976-98 except **75** and **107**. Eleven single sherds which were not inventoried were drawn and returned to the lot; they are included in the Catalogue. Due to the number of non-joining fragments it is not possible to state exactly the number of vessels represented; a sherd count for each ware was made after the major mending had been completed (no vessel was intentionally counted more than once) and appears after the headings in the Catalogue.

Coins

The floor deposit produced a number of coins. These were identified and published by Joan Fisher, Corinth numismatist, in her report on the coins of the 1976 excavation season.⁶ A list of these coins is appended here for the reader's convenience.

Lot 1976-98

- 1976-112 Greek, Boiotian Federal, *ca.* 244-197 B.C.
- 1976-123 Corinth, Duovir under Augustus, *ca.* 17 B.C.
- 1976-124 Greek, Sikyon, 4th century B.C. or later
- 1976-125 Corinth, Duovir under Augustus, 27 B.C.-A.D. 14
- 1976-127 Greek Imperial, 1st-2nd century after Christ
- 1976-136 Corinth, Duovir under Augustus, A.D. 4/5
- 1976-137 Greek, Athens, 2nd-1st century B.C.
- 1976-138 Corinth, Duovir under Julius Caesar, 49-44 B.C.
- 1976-139 Corinth, Duovir under Augustus, 17 B.C.
- 1976-126 was not a coin; 1976-128 and 1976-129 disintegrated.

Lot 1976-99

- 1976-99 Greek, Apamea, 133-48 B.C.
- 1976-91 and 1976-100 were not coins.

Catalogue of Finds: Pottery, Lamps, Glass, and Small Finds

The pottery found in the floor deposit is grouped by wares in the following Catalogue, with lamps, glass and miscellaneous finds included at the end to give a complete picture. Substantial quantities of western and eastern sigillata and other wares are present. The Arretine ware and the lamps provide the best evidence for a date early in the principate of Tiberius.

⁵MF-1976-16 and MF-1976-17, respectively.

⁶J. E. Fisher, "Coins: Corinth Excavations, 1976, Forum Southwest," *Hesperia* 49, 1980, pp. 1-29.

CATALOGUE

In addition to the abbreviations commonly used for *Hesperia*, the following are employed for the Catalogue and Discussion of the Catalogue:

- Agora V* H. S. Robinson, *The Athenian Agora, V, Pottery of the Roman Period: Chronology*, Princeton 1959.
- Antioch IV, i* F. O. Waagé, ed., *Antioch on-the-Orontes, IV, i, Ceramics and Islamic Coins*, Princeton 1948.
- Berger L. Berger, *Römische Gläser aus Vindonissa*, Basel 1960.
- Bolsena IV* C. Goudineau, *Fouilles de l'École française de Rome à Bolsena (Poggio Moscini) 1962–1967, IV, La céramique arétine lisse* (École française de Rome, *Mélanges d'archéologie et d'histoire*, Suppl. 6), Paris 1968.
- Conimbriga IV* M. Delgado, F. Mayet, and A. Moutinho de Alarcão, *Fouilles de Conimbriga, IV, Les sigillées*, Paris 1975.
- Corinth IV, ii* O. Broneer, *Corinth, IV, ii, Terracotta Lamps*, Cambridge, Mass. 1930.
- Corinth XII* G. R. Davidson, *Corinth, XII, The Minor Objects*, Princeton 1952.
- D-W H. Dragendorff and C. Watzinger, *Arretinische Reliefkeramik*, Reutlingen 1948.
- "Haltern" S. Loeschcke, "Keramische Funde in Haltern," *Mitteilungen der Altertumskommission für Westfalen* 5, 1909, pp. 101–322.
- Hama III, ii* A. P. Christensen and C. Friis Johansen, *Hama, Fouilles et recherches 1931–1938, III, ii, Les poteries hellénistiques et les terres sigillées orientales*, Copenhagen 1971.
- Hayes, *Glass* J. W. Hayes, *Roman and Pre-Roman Glass in the Royal Ontario Museum*, Toronto 1975.
- Hayes, *Hesperia* 42, 1973 J. W. Hayes, "Roman Pottery from the South Stoa at Corinth," *Hesperia* 42, 1973, pp. 416–470.
- Loeschcke, *Lampen* S. Loeschcke, *Lampen aus Vindonissa*, Zurich 1919.
- Mitsopoulou-Leon V. Mitsopoulou-Leon, "Keramik aus Basilika und Prytaneion—Ein Überblick," *JOAI* 50, 1972–1975, Beiblatt, cols. 495–524.
- O-C A. Oxé and H. Comfort, *Corpus Vasorum Arretinorum* (*Antiquitas*, 3 ser., 4), Bonn 1968.
- Ostia II* F. Berti, A. Carandini, et. al., *Ostia II (Studi Miscellanei 16)*, Rome 1970.
- Samaria-Sebaste III* J. W. Crowfoot, G. M. Crowfoot, and K. M. Kenyon, *Samaria-Sebaste, III, The Objects from Samaria*, London 1957.
- Tarsus I* H. Goldman, ed., *Excavations at Gözlü Kule, Tarsus, I, The Hellenistic and Roman Periods*, sect. VI: F. F. Jones, "The Pottery," Princeton 1950.
- Williams, *Hesperia* 46, 1977 C. K. Williams, II, "Corinth 1976: Forum Southwest," *Hesperia* 46, 1977, pp. 40–81.

Nota Bene: For Haltern, Goudineau, Samaria, Dragendorff, Broneer, and Isings with type or form numbers see respectively "Haltern", pl. X (= O-C, pl. I); *Bolsena IV*, Tables récapitulatives des formes, pp. 371–375; *Samaria-Sebaste III*, figs. 73, 77–82; H. Dragendorff, "Terra Sigillata," *BonnJbb* 96/97, 1895, pls. I–III; *Corinth IV, ii*, "Classification," *passim*; and C. Isings, *Roman Glass from Dated Finds*, Groningen 1957.

All measurements are given in meters. Corinth comparanda are cited by inventory (C, CP, L, or FSt) numbers only.

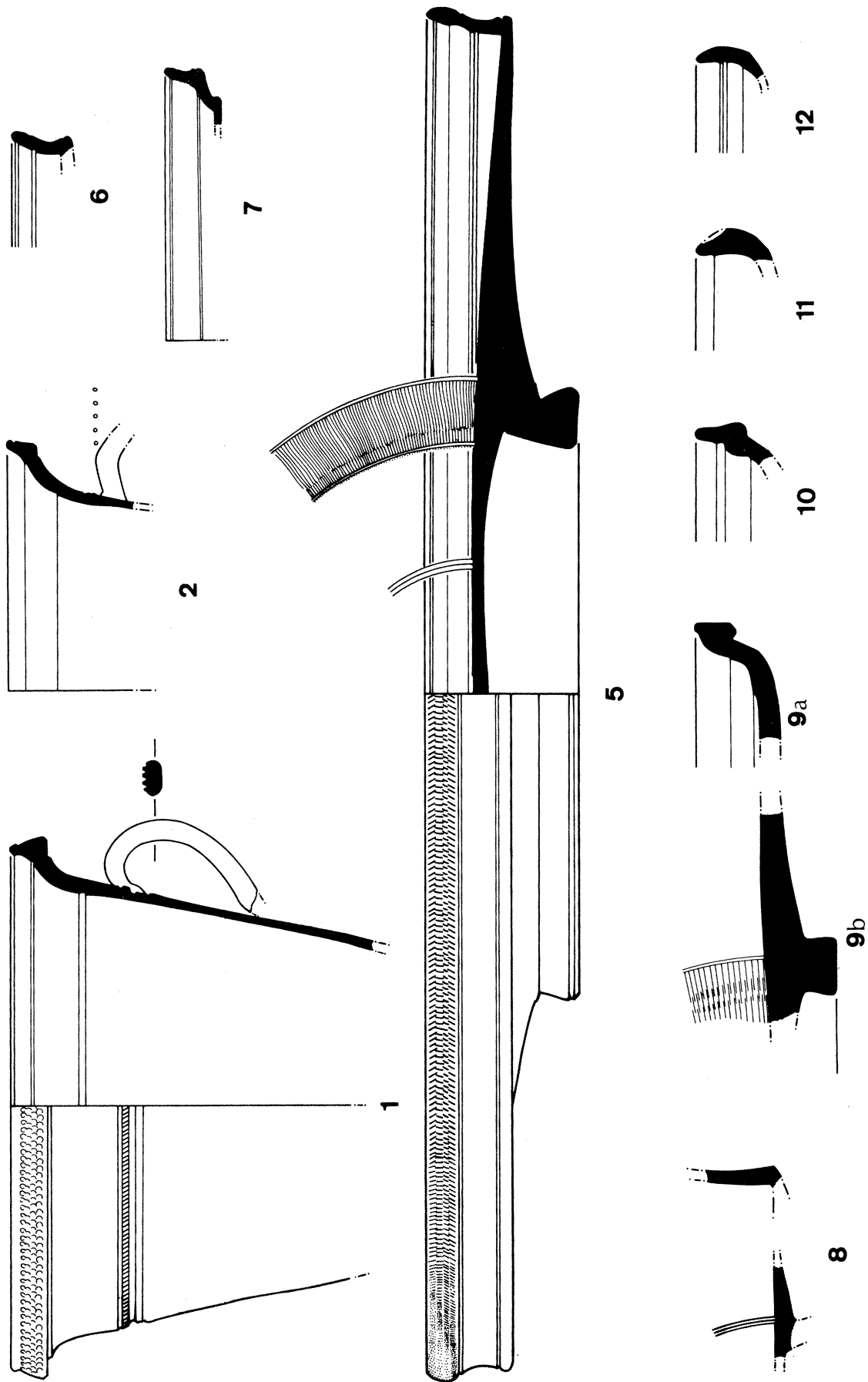


FIG. 2. Arretine ware: 1, 2, 5-12. Scale 1:2.

ARRETINE WARE (1-16 plus 60 sherds)⁷

1. Modiolus Fig. 2, Pl. 28

C-1976-20 a-e, C-1974-53 (handle). P. H. 0.122, D. rim 0.178. Many fragments of upper wall and rim; non-joining handle fragment found in later stratum.

Modiolus with slightly flaring conical body, overhanging rim and single handle attached to upper wall. High rim with everted triangular lip has two fascias (the upper one rouletted) separated by a groove; triangular lip rouletted with groove above. Concave molding on interior of lip and groove at mid-point of rim on interior. Grooved vertical strap handle with wavy bifurcating attachment above is attached at base of rim, over ovolo. Signature in relief field: :MPEREN: BARGATE, both stamps in a rectangular frame. Relief decoration: horizontal wreath of laurel leaves and buds encircles vase; above, horizontal vine stem encircles vase with alternating pairs of leaves and bunches of grapes, both with tendrils; at top, double-framed ovolo-and-tongue border below a row of closely spaced bosses. Space for signature was achieved by leaving out one pair from vine group but alternation continues across break. Tendrils of vine group made by stamping and by manuscript lines. Glaze probably painted onto handle.

Published: Williams, *Hesperia* 46, 1977, p. 78, no. 34, pl. 12.

For the profile, cf. *Bolsena* IV, B-2B'-31 and B-2B'-34; for the stamps, O-C 1256; for the ovolo, cf. D-W, fig. 1, ovolo 13; for the grapes cf. *ibid.*, pl. 22:277.

2. Modiolus Fig. 2

C-1976-395. Est. D. rim 0.158-0.160 (warped). Six joining fragments of rim and upper handle; non-joining rim fragments in lot; no fragments of relief field.

On exterior two grooves separate relief field from rim; offset below lip, groove near top of lip. Offset concave molding on interior of lip; groove

at mid-point of rim. Grooved vertical strap handle with wavy bifurcating attachment above is attached at base of rim. One row of pearl decoration at top of relief field. Warped in firing.

3. Relief fragment Pl. 28

C-1976-396. H. 0.047. Single body fragment.

Fragment of upper wall of crater with groove at top of relief field and concave band at same level on interior. Relief decoration: body covered with wide, imbricated leaves. At top of field, row of circular fillers of which a seven-petal rosette with center and two double concentric circles are preserved adjacent to each other.

Cf. Dragendorff, *BonnJbb* 96/97, 1895, pls. V:38 and VI:67 by L. Pomponius Pisanus and a Puteolan potter respectively; D-W, pl. 21:264, assigned to Bargathes also by A. Stenico, *Revisione critica delle pubblicazioni sulla ceramica arretina*, Milan 1960, no. 1207.

4. Relief fragments Pl. 28

C-1976-455 a-c. Three non-joining fragments.

Fragments of relief cup with convex wall separated by a groove and rouletted half-round molding from plain vertical rim. Relief decoration: lower zone of vertical nautili placed between lower ends of upper zone of large nautili inclined obliquely to the left. Upper nautili spiral to right at their tops and there is a rosette between each pair of nautili. Schematic leaf band and small narrow ovolo at top of field.

Attributable to Bargathes. Cf. C. Goudineau, "C ramique ar tine   reliefs de Bolsena," *M l-Rome* 80, 1968, p. 179, no. 24, pl. X, which is similar except that the nautili in both registers are spiraling. For the spiraling nautili, cf. D-W, pls. 20:208, 338 (which also has the rosettes) and 21:337; for the straight nautili and possibly the same ovolo, *ibid.*, pl. 21:217.

5. Haltern type 2 Fig. 2, Pl. 34

C-1976-22. H. 0.054, D. foot 0.210, D. rim 0.474. Complete profile. About half preserved;

⁷C-1976-12, which comes from the 4th-century (after Christ) level over the floor deposit, is probably to be associated with it. In shape it is similar to *Conimbriga* IV, no. 205, pl. VIII, which comes from pre-Claudian levels, and its stamp is a duplicate of *ibid.*, no. 240, p. 43, pls. XII, XIII.

also non-joining fragments in lot. Resting surface and interior of foot not glazed.

Broad trapezoidal foot with recessed interior. Slightly oblique rim with narrow lower and wide upper molding on exterior, defined respectively by a groove above and a groove below; upper molding rouletted. Interior rim has a groove, a narrow fascia, a *cyma reversa* molding and another groove. Lip flat. Double incised groove and two single grooves on floor, D. 0.086, 0.171 and 0.207 respectively; fine linear rouletting between single grooves. Central stamp:

HILARV/SAVFEI

in framed rectangle. Roughened rectangular marks in rouletting on floor indicate where two of the three kiln supports rested.

Published: Williams, *Hesperia* 46, 1977, p. 78, no. 36, pl. 30.

Cf. *Bolsena* IV, C-2A-38 which has a simple channel on the interior rather than a *cyma reversa*.

6. Haltern type 2 Fig. 2

Lot 1976-98:3. Single rim sherd.

7. Haltern type 3 Fig. 2

C-1976-23. P. H. 0.021. Single rim fragment with half of applied spiral handle.

Molding between floor and rim angular on exterior. Rim has a constricted band set off by grooves from an upper and a lower molding. Interior quarter-round molding offset from the concave rim; groove below lip.

Cf. *Conimbriga* IV, no. 123 and also the interior profile of no. 99, p. 16, pl. VII.

8. Goudineau form 3 Fig. 2

C-1976-401 a, b. Mended non-joining fragments of lower rim and outer floor; non-joining rim fragment in lot. Glaze has an oily luster in indirect light.

From a cup with a ring foot, shallow curving lower wall, vertical concave upper wall, and two vertical handles attached to upper wall. Double groove on floor over (missing) foot, est. D. 0.090. Inside the grooves is a line where another pot rested in firing.

9. Haltern type 1 Fig. 2

C-1976-397 a, b. Est. D. foot 0.220, est. D. rim 0.470-0.480. Fragments of rim, floor and foot; non-joining fragments in lot. Resting surface and interior of foot not glazed. Glaze has oily sheen in indirect light.

Ring foot with wide resting surface, slightly contracted above. Rim undercut and with vertical outer face. Groove at lip. Groove on floor, est. D. 0.210, with fine rouletting towards center of plate. Marks of one curving kiln support over rouletting.

Cf. *Bolsena* IV, A-2B-8.

10. Haltern type 1 Fig. 2

C-1976-398. Est. D. rim 0.448. Single rim sherd; non-joining floor fragments in both lots.

Rim slightly undercut on exterior with vertical face to lip. On interior, concave band between floor and wall set off by groove from quarter-round molding; above the molding, groove and another concave band below the lip.

Cf. *Conimbriga* IV, no. 47, pl. IV.

11. Haltern type 4, Goudineau form Fig. 2
19/30

C-1976-399. P. H. 0.028. Single rim sherd, chip missing from exterior.

Rim lunate in section. Shallow offset on interior placed well below lip.

Cf. *Bolsena* IV, B-2C-85.

12. Haltern type 4 Fig. 2

C-1976-400. Est. D. rim 0.320. Single rim sherd.

Double groove on interior of rim below lip.

13. Haltern type 9 Pl. 28

C-1976-402. P. H. 0.032. Single fragment of about one third of cup from foot to lower rim, center of floor missing. Glaze has a pronounced oily luster on both interior and exterior.

Cup with high, spreading ring foot. Slightly concavo-convex wall. Rounded molding rouletted and defined by grooves at top and bottom of rim. Bottom of interior curves into wall, transition marked by a discontinuous groove. Floor cracked before glazing; glaze has seeped through to inside.

14. Haltern type 15 Pls. 28, 34

C-1976-25 a, b, C-1976-26. Est. D. foot 0.050, est. D. rim 0.108. Three non-joining fragments of foot and upper wall.

Beveled ring foot. Widely oblique lower wall. Upper wall with convex molding bordered by grooves near mid-point on exterior and concave molding bordered by grooves slightly lower down on interior; exterior molding rouletted. On the interior, floor curves into wall; a groove near base of wall. Groove below lip on exterior. Graffito on interior of foot.

Similar are A. Frova, ed., *Scavi di Luni: relazione preliminare di scavo 1970-1971*, Rome 1973, CM 2512/3, pl. 63:24; Hayes, *Hesperia* 42, 1973, p. 431, no. 62, pl. 84 = C-36-1198; and *Bolsena IV*, C-2A-60 which lacks the interior molding and the rouletting.

15. Cup base Pl. 34

C-1976-403. Est. D. base ring 0.053. Single fragment of one quarter of floor and base ring.

Cup or beaker with low rectangular base ring and horizontal floor. Incised groove on floor, D. 0.040. Central stamp: [EE] in a rectangle.

The stamp is probably one of He(l)enus P. Corneli, O-C 509.

16. Stamped fragment Pl. 34

C-1976-24. Max. p. dim. 0.056. Two joining floor sherds. Glazed on both sides.

Two incised grooves on floor, D. 0.017 and 0.020. Central stamp; PHILA/AVILL in a rectangle.

Published: Williams, *Hesperia* 46, 1977, p. 78, no. 35.

See O-C 254 a.

EASTERN SIGILLATA A (17-24 plus 19 sherds)**17. Crater** Fig. 3, Pl. 28

C-1976-21 a-e. P. H. 0.141, est. D. rim 0.175. Complete profile except pedestal foot; 37 joining and non-joining fragments preserve about one half.

Hollow pedestal foot missing. Rim with everted triangular lip. Interior rim offset from body,

groove below flat, upward inclined surface to lip. Relief decoration: ridge forms a ground line in front of which is a repeated frontal statue of Artemis wearing a peplos and her quiver. She stands in a Polykleitan stance, right leg bent, left straight, right arm hanging straight down, left arm bent up close to her side and holding an object; her head is inclined to her left. Between the statues a twisted female figure in a short, frothy chitoniskos dances to the right holding her breasts in both hands. She steps forward with her right foot, her shoulders are twisted to full front and her head is again in profile to the right. Her long hair is tied in a double chignon. Oblique oak(?) leaves between a ridge and a groove form the upper border of the field.

Published: Williams, *Hesperia* 46, 1977, pp. 77-78, no. 33, pl. 30.

For the decoration see *Antioch IV*, i, fig. 22, nos. 10, 16(?), 19, 22, 27-29; for the shape, *ibid.*, no. 485, pl. VI. For other examples of Eastern Sigillata A relief ware in imitation of Arretine cf. *Tarsus I*, fig. 156, nos. 693, 694; *Hama III*, ii, R1, figs. 72, 74-77; and at Corinth, C-36-2301. It is not clear whether the note, A. Stenico, "Ceramica aretina a rilievo della Coll. Pisani-Dossi del Museo de Milano," in *Studi in onore di A. Calderini e R. Paribeni III*, Milan 1956, pp. 413-414, note 4, refers to another such relief crater or to a Hellenistic molded relief bowl.

18. Samaria form 1 Fig. 3

C-1976-27. H. 0.043, D. base ring 0.178, D. lip 0.293. Complete profile except center of floor; eleven joining fragments give about five sixths.

Plate with low base ring or foot and oblique convex wall. Interior of base recessed in two degrees; exterior beveled. Triple circle of rouletting on floor, D. 0.055. Marks of three kiln supports on floor and on resting surface. Wall burned in one place.

For the rim cf. *Hama III*, ii, no. 1.11, fig. 26; there is no close parallel for the base.

19. Samaria form 5 Fig. 3

C-1976-404 a, b. Est. D. rim 0.420. Two mended fragments of floor and rim; non-joining fragments in lot and a non-joining floor fragment

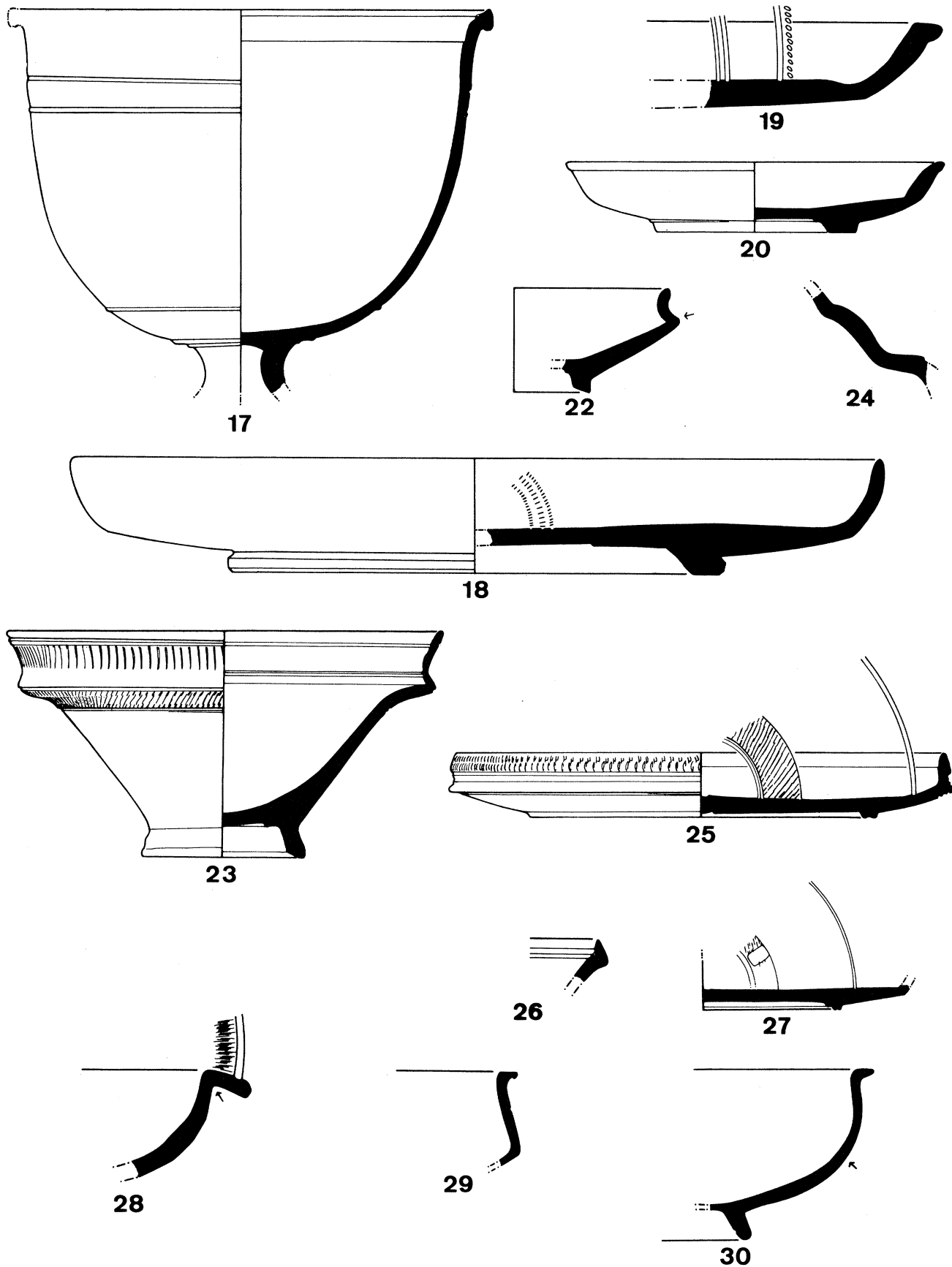


FIG. 3. Eastern Sigillata A: 17–20, 22–24. Eastern Sigillata B: 25–27. Other imported red wares: 28–30. Scale 1:2.

from lot 1976-110 (fill of stairway to cellar) joined a piece from lot 1976-117 (cellar fill).

Platter or plate with low base ring, convex flaring wall and narrow horizontal rim. Band of dot rouletting on floor outside an incised groove, est. D. 0.304. Floor fragment has two double incised grooves, est. D. 0.259 and 0.304 respectively. Surface of undersurface of floor cracked in drying. Finger smear of clay on floor on top of glaze.

20. Samaria form 11 Fig. 3

C-1976-28. H. 0.026, D. base 0.075, D. rim 0.138. Complete profile, about three quarters preserved.

Plate or saucer with low beveled base ring, oblique wall, and slightly everted lip. Ridge at edge of interior of base ring. Glaze drips and brush marks near lip.

Cf. *Agora* V, G9; *Samaria-Sebaste* III, fig. 79:6; *Tarsus* I, no. 371, fig. 192.

21. Samaria form 11 Pl. 28

C-1976-29. H. 0.024, D. base 0.081, D. rim 0.141. Complete profile, nearly complete.

Same as 20. Step at edge of interior of base. Brush marks visible over entire interior where glaze has worn away: circular on wall and outer part of floor, straight across center.

22. Samaria form 14/23 Fig. 3

C-1976-405 a, b. Est. D. base 0.056, est. D. rim 0.112. Two non-joining fragments allow restoration of nearly complete profile; center of floor missing; another non-joining rim fragment in lot.

Bowl with ring base, strongly oblique wall, and concave vertical rim. Inward beveled resting surface and step at edge of interior of base.

23. Samaria form 23 Fig. 3

C-1976-31. H. 0.081, D. foot 0.061, est. D. rim 0.160. Complete profile, about half preserved.

See Appendix.

Flaring beveled ring foot; interior of foot beveled in from resting surface and center of foot in two degrees. Slightly concave wall turning out abruptly to flange at top; everted upper wall rouletted between grooves. Oblique rim; exterior rou-

letted with groove below lip; two grooves on interior rim.

Cf. *Samaria-Sebaste* III, fig. 68:8, but the interior profile of the rim is more rounded and there are single rather than double grooves. For other pieces with the same type of rouletted decoration see *Hama* III, ii, pp. 168-170, nos. 23.14-23.25, figs. 65, 66.

24. Lid? Fig. 3

C-1976-406. P. H. 0.032. Single fragment, broken all around.

Exterior glazed by dipping; glaze drips on lower interior.

High lid with complex curve. Groove at top of convex member (missing). Offset horizontal flange curving into quarter-round section, followed by lower edge of concave section.

EASTERN SIGILLATA B (25-27 plus 12 sherds, very fragmentary)

25. Imitation Haltern type 2 Fig. 3, Pl. 34

C-1976-32 a, b. H. 0.023, D. base 0.127, D. rim 0.179. Complete profile. Two non-joining fragments give half of base to three quarters of rim.

Plate with low base ring with single groove on resting surface. Interior of base has small central depression with nipple. Flat floor curving up at edges to sharp flange and vertical rim, which has a faceted concave band and a rouletted convex band above. Interior rim also concavo-convex, with groove below lip. Triple incised groove at outer edge of undersurface of floor below flange. Double incised grooves and two single grooves on floor, D. 0.048, 0.075 and 0.156 respectively; rouletting between inner grooves. Central stamp: ΠΟ/ΘΟΥ in a rectangle.

Published: Williams, *Hesperia* 46, 1977, pp. 78-79, no. 37, pl. 30.

Cf. Hayes, *Hesperia* 42, 1973, p. 453, no. 135, pl. 86 = C-37-1844; P. Hellström, *Labraunda*, II, i, *Pottery of Classical and Later Date, Terracotta Lamps and Glass*, Lund 1965, no. 211, pl. 35. For the stamp cf. R. Heberdey, "Der Rundbau auf dem Panajirdagh: Kleinfunde," in *Forschungen in Ephesos veröffentlicht vom Österreichischen archäolo-*

gischen Institute I, Vienna 1906, p. 172, no. 39-43; other examples in Corinth: C-35-63, C-36-1185.

26. Plate fragment Fig. 3

Lot 1976-98:10. Single fragment of rim.

Cf. Mitsopoulou-Leon, col. 510, fig. 5:i.

27. Plate fragment Fig. 3, Pl. 34

C-1976-33. Est. D. base 0.100. Two joining fragments of base ring and floor, broken all around.

Grooved base ring has heavy step on interior. Undersurface of floor rises slightly, and angle to wall is rather sharp. Double and two single incised grooves on floor, D. 0.042, 0.056 and 0.114 respectively; rouletting and radial stamps between double grooves and inner single groove. Central and one (of four) radial stamps preserved:

IATR/OCLI

in a rectangle. Partially burned black.

Cf. O-C 1231, 1232 in Greek and Latin. Other examples of this potter in Corinth: C-36-1659 with II and C; C-36-766, C-38-518, and C-75-153, all Latin. For radial stamping on Eastern Sigillata B see Mitsopoulou-Leon, col. 510. Possibilities for the shape are Heberdey, in *Forschungen in Ephesos I*, p. 171, no. 28 by the same potter, or Mitsopoulou-Leon, fig. 5:h, or Hayes, *Hesperia* 42, 1973, p. 453, no. 133, pl. 86 = C-36-2186.

OTHER IMPORTED RED WARES (28-30 plus 1 sherd)

28. Bowl with horizontal rim Fig. 3

C-1976-414 a, b. Est. D. rim 0.29. Two mended non-joining fragments of wall and rim; non-joining body and rim fragments in lot.

Hard, fine, slightly micaceous fabric fired light red (2.5YR 6/8)⁸ at core, and lighter towards surface (7.5YR 7/6). Lustrous red glaze (2.5YR 4/6) varying to dusky red and black (2.5YR 3/2, 2.5YR 2.5/). The wear of the glaze from the outer edge of the rim is characteristic of the fabric.

Open bowl of which the wall curves from nearly horizontal at floor to vertical below rim; upper exterior wall slightly contracted. Broad horizontal

rim rouletted on the inner half; rouletting bordered by a broad groove.

For a later version apparently of the same form, cf. C-74-156 (same fabric) and C-36-1754 (local) = Hayes, *Hesperia* 42, 1973, p. 464, no. 212, pl. 91.

29. Bowl with angular carination Fig. 3

C-1976-415. Est. D. rim 0.140. Three joining fragments preserve profile from below carination to rim and about one quarter of circumference; non-joining fragment of same size in lot. Glaze flaking.

Attic? Hard, micaceous, light-red fabric (2.5YR 6/8). Totally glazed; micaceous red glaze (2.5YR 5/6 on exterior, 2.5YR 5/8 on interior).

Bowl with flaring body to angular carination, upper wall tapering to narrow horizontal rim. Groove at mid-point of upper wall.

30. Bowl with horizontal rim Fig. 3

C-1976-416 a, b. Est. D. foot 0.065, est. D. rim 0.155. Two mended non-joining fragments allow restoration of complete profile except center of floor; non-joining fragments in lot.

Attic? Fabric as 29. Totally glazed; micaceous red to dark red glaze (2.5YR 4/8 on rim, 2.5YR 3/6 on exterior).

Hemispherical bowl with beveled ring foot. Wall begins to contract below narrow horizontal rim. Burned after breaking.

Cf. *Agora V*, G65-G67.

GRAY WARES (31-39 plus 2-3 sherds from another vessel similar to 31, and about 30 others)

31. Platter with stamped rim Pl. 29

C-1976-245 a, b. Est. H. 0.028, est. D. rim 0.640. Two non-joining fragments mended from 10 pieces give nearly complete profile. Twenty-three mended non-joining fragments in lot preserve about one quarter.

Light reddish brown fabric (5YR 6/3) with occasional medium-sized lime inclusions and much silvery mica, lamellar in appearance but with a clean

⁸ *Munsell Soil Color Charts*, Baltimore 1971.

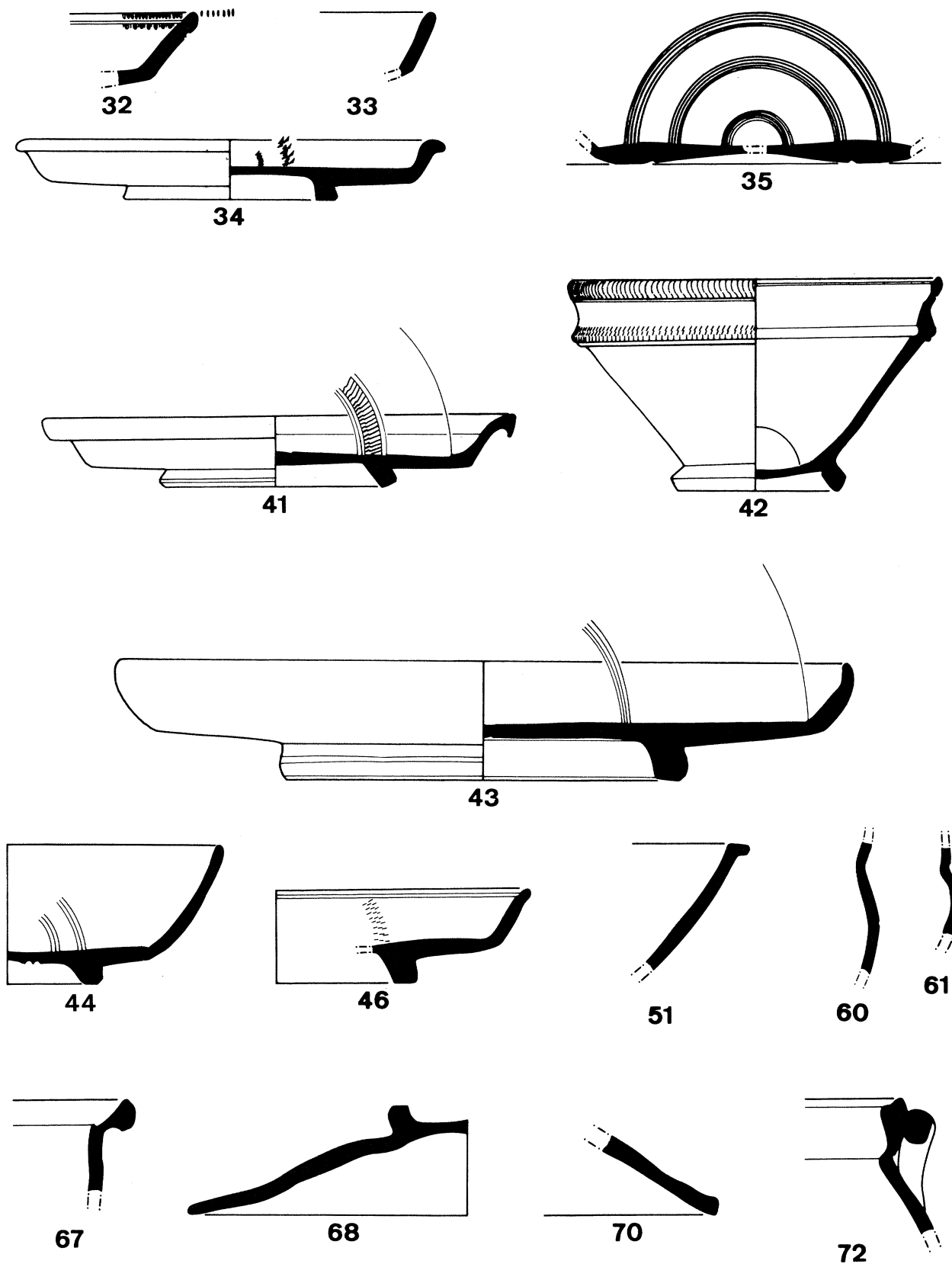


FIG. 4. Gray wares: 32–35. Local fine and coarse wares: 41–44, 46, 51, 60, 61, 67, 68, 70, 72. Scale 1:2.

fracture. Black glaze, dull on exterior, burnished on interior. Cf. 34.

Platter with low, grooved base ring and horizontal rim. Rim with half-round molding forming raised lip at top of wall, then two low convex moldings, a faceted band with simplified braid pattern, and a widely beveled outer edge with individually stamped egg-and-dotted-tongue motif.

Cf. Mitsopoulou-Leon, col. 505, fig. 4:d, which is not glazed on the exterior.

32. Plate

Fig. 4

C-1976-417. Est. D. rim 0.29-0.30. Two joining fragments of rim to edge of floor. Mended non-joining rim fragment in lot.

Hard and dense but still slightly porous gray fabric (est. 10YR 4.75/1) with a few fine white inclusions (lime possibly dissolved). Totally glazed; semilustrous gray glaze, slightly streaky and thinner on exterior (very dark gray 10YR 3/1 and very dark grayish brown 10YR 3/2).

Plate with oblique wall. Broad groove set well below lip on exterior defines half-round rim. On interior a groove closer to lip. Interior wall flat. Bands of rouletting on outside of lip and above and below interior groove. Interior more carefully smoothed than exterior which shows scratchy finishing marks.

33. Plate

Fig. 4

C-1976-418. Est. D. lip 0.236. Single rim fragment. Non-joining floor fragment in lot.

Hard, dense, micaceous, light-gray fabric (10YR 6.5/1) with occasional orange inclusions. Totally glazed(?); semilustrous dark gray glaze (5Y 4/1).

Plate with tapering, horizontal floor and narrow oblique rim with inward rounded lip.

34. Plate

Fig. 4

C-1976-42. H. 0.022, D. foot 0.073, D. rim 0.150. Complete profile. Many joining fragments give about one third; one non-joining rim fragment in lot.

Slightly splintery, reddish brown fabric (5YR 5/3) with small white inclusions and much silvery mica, fired dark gray at unglazed surfaces (5YR 4/1). Glazed on interior and on exterior rim.

Black glaze (2.5YR N2.5/) lustrous on interior, dull on exterior. Cf. 31.

Small plate with low ring foot and oblique wall to strongly outturned rim. A single and a double row of rouletting on the floor, D. 0.026 and 0.048 respectively. Foot spreading and sharply cut.

35. Plate floor

Fig. 4

C-1976-419. D. floor 0.109. Six joining fragments give almost complete floor; center of floor and rim missing.

Hard, grayish brown fabric (10YR 5/2) with mica and a few white inclusions. Interior glazed; lustrous brown to reddish brown glaze (7.5YR 5/2 to 5YR 4/3) with occasional mica.

Concavo-convex base of plate with wide groove just inside resting surface, at point of inflection. Floor slightly depressed towards rim. Three sets of grooves on floor incised with a multiple point, D. 0.026, 0.061 and 0.093 respectively.

36. Bowl of "Megarian" type

Pl. 29

C-1976-41 a, b. H. 0.070, est. D. lip 0.160. Complete profile. Two non-joining fragments mended from 11 pieces; two non-joining fragments in lot.

Gritty, micaceous, dark gray fabric (5Y 3.5/1) with tiny white inclusions. Totally glazed; flaking, thin black glaze (2.5Y N2/ to 5Y 2.5/2).

Squat bowl with rounded bottom and lower wall broadly flaring to slightly inturned rim. Exterior rim inset from body by groove. Pointed lip. Relief decoration on exterior: lower wall has three rows of leaves with straight central stalk topped by dot, which spring from the ridge around the plain(?) central medallion. A ridge separates the upper wall decoration, which consists of a row of blob rosettes between two rows of dots, from the lower body, and another ridge marks this upper border off from the rim. Graffito on exterior rim.

For similar profile and decoration in a related fabric, cf. A. Laumonier, *Délos*, XXXI, *La céramique hellénistique à reliefs*, Paris 1977, pls. 131: 9309, 2380 and 134:82.

37. Ovoid pitcher

Pl. 29

C-1976-421 a, b. Max. D. 0.118. Two mended non-joining fragments give profile from foot to

just below neck; handle and neck missing. One piece of b added from lot 1976-117.

Soft, gritty, pale brown fabric (10YR 6/3) with small white and pale orange inclusions. Exterior glazed; micaceous glaze, brown to black (7.5YR 5/4 to 7.5YR N2/).

Ovoid pitcher with low, wide ring foot, maximum diameter just above foot, handle attached to upper shoulder. Double lines of rouletting on shoulder almost form grooves. Lower handle attachment just above rouletting.

38. = 59

39. Appliqué Pl. 29

C-1976-422. Single shoulder fragment, broken all around.

Hard, coarse, dark gray fabric (5Y 4/1) with many small white inclusions of two or three kinds and some mica. Exterior glazed, drips on interior; black glaze with slightly metallic luster (7.5YR N2/).

Human figure appliqué on the tapering shoulder of closed vessel. Male figure moves vigorously to right; flexed left arm extended before him, flexed right arm behind. Shoulders almost frontal. Head in profile shows short hair to eyebrow and ear level, broad diadem or turban. Cursory musculature and features in high relief.

LOCAL FINE AND COARSE WARES (40-72 plus fine: 60 sherds, one third from closed vessels; cooking: at least 27 vessels)

40. Modiolus Pl. 29

C-1976-407 a, b. Est. D. lip 0.154. Fourteen joining fragments give about one third of rim and part of upper body; non-joining rim and part of handle (b) added from lot 1976-117; base missing.

Soft, porous orange fabric (5YR 6/6) with mica and fine white inclusions. Thick, non-adherent, micaceous red glaze (between 10R 4/6 and 2.5YR 4/6) with black spots covers interior rim and exterior. Cf. 49 and 54.

Vertical upper wall curves into everted triangular rim. Groove on exterior face of rim; shallow

concave band inside lip. Two grooves on exterior wall, 0.070 below lip.

Cf. 1 and C-60-214, a complete example in local fabric published in H. S. Robinson, "A Green-glazed Modiolus from Corinth," in *Χαριστήριον εἰς Ἀναστάσιον Κ. Ὀρλάνδον*, Γ', Athens 1965, p. 183 and note 10, pl. LXI:c.

41. Imitation Haltern type 1 Fig. 4, Pl. 34

C-1976-35. H. 0.025, D. base 0.076, D. rim 0.168. Complete profile, nineteen joining fragments preserve about two thirds.

Totally glazed by dipping from foot. Glaze on floor changes from red through black to yellowish red from stacking in kiln. See Appendix.

Biconically beveled ring base. Angle between undersurface of floor and wall sharp. Groove at lip. Grooves on floor, D. 0.061 and 0.074 respectively, with rouletting between them. Central stamp:

CEI EI

in *tabella ansata*. Graffito on undersurface of floor. Burned after breaking.

For the stamp cf. C-62-6 and CP-2687 = O-C 408 s. For the shape cf. C-62-6 (local) and C-1977-129 (Italian).

42. Imitation Haltern type 8 Fig. 4

C-1976-38. H. 0.075, D. base 0.058, est. D. rim 0.128. Complete profile. Thirteen joining fragments give about one third. Non-joining fragment in lot.

Spreading beveled ring base. Rim with two rouletted rounded moldings and a concave band between them; lower molding has deep groove in center; grooves define concave band. Interior profile parabolic to groove which sets off rim; rim is convex-concave with groove below the lip. Groove on floor, D. 0.031. Traces of rectangular stamp.

43. Imitation Samaria form 1 Fig. 4, Pl. 34

C-1976-34. H. 0.041, D. base ring 0.138, D. lip 0.256. Complete except for small fragment of wall.

High, heavy ring base with wide, beveled resting surface; interior of foot slightly stepped and with depressed center. Double groove incised on

floor, D. 0.106. Central stamp: IVLI retrograde in *tabella ansata* with nails in the four corners. Wedge-shaped double dipping streak. Marks of three, irregularly circular, kiln supports on floor and on resting surface. Burned after breaking.

Duplicate stamp: C-1976-182.

44. Imitation Samaria form 2 Fig. 4
C-1976-30. H. 0.049, D. base 0.065, est. D. lip 0.151. Complete profile. Two joining fragments give complete base and small section of rim.

Double-dipping streak; glaze peeled away except from upper wall. Cf. 57. See Appendix.

Double incised groove and inverted cone form center of interior of base. Nearly flat floor articulated from curving oblique wall. Two sets of double grooves on floor, D. 0.038 and 0.056.

45. Imitation Samaria form 10, complete rim in lot 1976-98.

46. Imitation Samaria form 11 Fig. 4
C-1976-408. H. 0.034, D. base 0.088, est. D. rim 0.174. Twelve joining pieces preserve one third to one half; center of floor missing. Glaze badly worn.

Slightly beveled base ring. Groove inside lip. At least three overlapping bands of rouletting on floor over base ring. Finger smears in glaze around base ring and one below rim.

47. Imitation Samaria form 16 Pl. 29
C-1976-36. H. 0.074, D. base 0.059, est. D. rim 0.142. Complete profile. Four joining fragments give whole base and about one fifth of rim.

Flaring ring base with deep concavity and slight ridge at base of wall; interior of base ring a broad truncated cone. Stacking color change on exterior.

48. Imitation Samaria form 22 Pl. 29
C-1976-37. H. 0.055, D. base 0.057, est. D. rim 0.135. Complete profile. Nine joining fragments give whole base and about one quarter of rim. Non-joining fragment in lot.
Totally glazed. See Appendix.
Flaring beveled ring base with step on interior.

49. Imitation Samaria form 22
C-1976-409 a, b. Est. D. rim 0.158. Mended non-joining fragments from outer edge of base

ring to about one quarter of rim. Non-joining fragments in lot.

Fabric as 40. Shape as 48.

50. Imitation Samaria form 23 Pl. 29
C-1976-39. H. 0.046, D. base 0.037, D. rim 0.085. Complete profile. Single fragment preserving about two thirds.

Hard, very pale brown (10YR 8/3) or white fabric (2.5Y 8/2) with abundant tiny voids, small, rounded, dark gray inclusions sparse to moderate in number, and one or two larger white inclusions. Very thin glaze, very dark gray (10YR 3/1) to yellowish red (5YR 4/6), mostly peeled from interior.

Beveled ring base with wide resting surface; groove marks transition to undersurface of foot which has central nipple. Groove marks junction of base ring and wall. Rim has concave band and groove above.

Cf. *Samaria-Sebaste* III, fig. 81:6; *Antioch* IV, i, shape 453m, pl. V; *Tarsus* I, no. 417, fig. 194.

51. Bowl Fig. 4
C-1976-410. Est. D. rim 0.140-0.150. Two joining fragments from lower wall to rim.

Bowl with ring base formed by pointed bottom of flaring, slightly convex wall and with narrow, flat rim slightly beveled on underside.

For the same shape in Eastern Sigillata B see Hayes, *Hesperia* 42, 1973, p. 454, no. 154, pl. 87 = C-36-34.

52. Saucer
C-1976-60. H. 0.016, D. rim 0.081. Nearly intact.
String-cut base. Curving wall. Rounded lip.

53. Saucer Pl. 29
C-1976-61. H. 0.016, D. rim 0.088. Complete; rim chipped.
Exterior only partially glazed.
Cf. 52. Wide flaring wall with lip turned slightly inward.

54. Pitcher or amphora Pl. 29
C-1976-411. Est. D. base 0.055. Five joining fragments give complete base, profile to upper

shoulder and lower handle attachment. (Two pieces from lot 1976-117.)

Similar to 40. Exterior totally glazed.

Angular pitcher or amphora with ring base, widely oblique lower wall to carination, vertical belly, sloping shoulder above another carination. Shoulder at angle complementary to lower wall. Carination between lower wall and belly sharpened by scraping; upper carination more rounded. Lower attachment of vertical strap handle(s) at mid-shoulder.

Cf. *CVA*, Stuttgart 1 [Germany 26], 71 [1283]:6; and see also J. W. Hayes, *Roman Pottery in the Royal Ontario Museum*, Toronto 1976, no. 89, p. 20, fig. 5, pl. 11. Both of these are Eastern Sigillata A from which the local example is presumably copied.

55. Pitcher or amphora

C-1976-412. D. base 0.078. Twelve joining fragments preserve about half of base and part of lower body; non-joining wall fragments in lot.

Red glazed to just above base ring; glaze flaking.

Beveled base ring, concave above and with slight offset on interior. Broadly flaring lower wall.

56. Pitcher Pl. 30

C-1976-40 a, b. D. base 0.096. Two mended non-joining fragments preserve foot, profile of lower wall and about half of shoulder to edge of neck.

Exterior red glazed except interior of foot; glaze peeling from wall.

Pitcher with flaring ring foot with flat inset interior. Flaring convex wall to angular carination and sloping shoulder, narrow neck. Groove and handle attachment at mid-shoulder. White painted decoration on upper half of shoulder: short diagonal lines around neck and below circles alternating with parallel lines in pairs.

57. Pitcher Pl. 30

C-1976-454 a, b. Two mended non-joining fragments preserve most of body with profile to upper shoulder and upper neck and lip.

Fabric and glaze as 44; exterior red glazed to just above foot.

Carinated pitcher with ring foot, hemispherical lower body; angular carination marks off concave shoulder curving into neck; neck curves out to thickened rim with horizontal upper surface. Groove above angular carination. Two ribs below rim.

For the same general shape cf. *Agora* V, G2, pl. 4.

58. Cylindrical vessel Pl. 30

C-1976-413. P. H. 0.086. Two joining fragments of wall, broken all around; mended non-joining wall fragment in lot.

Local? Relatively soft, gritty reddish yellow fabric (5YR 6/8) with red and dark inclusions. Exterior red glazed, smears of glaze on interior.

Cylindrical vessel, probably with open mouth. Wall has pinkish white (7.5YR 8/2 to 7.5YR 8/4) painted decoration of three bands of globular leaves, staggered.

59. (= 38) Pitcher mouth Pl. 30

C-1976-420. D. lip 0.085. Nine joining fragments give about four fifths of rim, neck and upper wall, handle missing. Glaze worn from exposed edges.

Local. Relatively hard, gritty, light-gray fabric (5Y 7/1) with tiny white and black inclusions. Interior of mouth and exterior glazed; glaze crept into edges of handle attachment; very dark gray to black glaze (7.5YR N3/ to 7.5YR N2/).

Pitcher with continuous profile, sloping upper wall, short neck and everted, upward thickened rim, handle attached to underside of rim. Shallow groove on interior emphasizes lip.

Cf. C-65-618, the same form in local red ware.

60. Pink-slipped bowl Fig. 4

C-1976-426 a, b. Two mended non-joining fragments of shoulder and lower rim, broken all around.

Local? Slipped on exterior, glazed on interior. Slip pink (5YR 8/3.5); glaze light red to red depending on thickness (2.5YR 6/8 to 2.5YR 5/6).

Bowl with flaring lower wall curving to convex shoulder and out to vertical, slightly convex rim. Single incised groove on shoulder.

- 61. Pink-slipped pitcher** Fig. 4
C-1976-427. Single body sherd, broken all around. Slip worn.
Cf. **60.** Exterior pink slipped (5YR 8/2 pinkish white).
Belly fragment from a jug with strongly convex, vertical lower wall curving in to a concave band; upper wall only slightly convex, vertical.
- 62. Pink-slipped pitcher** Pl. 34
C-1976-428. D. base 0.089. About one half of base, graffito not complete; non-joining fragments of body, neck, mouth and handle in lot.
Local? Relatively hard, gritty, reddish yellow fabric (5YR 7/5) with white inclusions, fired much yellower in outer half (nearly 10YR 8/5). Exterior totally slipped except part of interior of base; pinkish white slip (7.5YR 8/2).
Base of jug with globular body, narrow neck and wide angular mouth. Wide, rounded base ring with narrow groove on resting surface curves in to interior of base. Graffito on interior of base.
For a similar, but smaller, pitcher cf. C. W. Blegen, H. Palmer and R. S. Young, *Corinth*, XIII, *The North Cemetery*, Princeton 1964, p. 296, 510-1.
- 63. Moldmade thymiaterion** Pl. 30
MF-1976-101 a, b. a: p. H. 0.076, W. at horns 0.086; b: p. H. 0.068. Two mended non-joining fragments preserve part of base edge and back, both ears and horns, lower portion of thymiaterion bowl.
Local. Hard, reddish yellow fabric (5YR 7/6) fired very pale brown at surface (10YR 7.5/4) with small dark, white and red inclusions. Traces of pink paint on ears, yellow on horns.
Thymiaterion, of which the body is made in a two-part mold, and the bowl is handmade(?) and added separately. Flat base of thymiaterion open at bottom with a groove around the outside just above the edge. Tufted cow's ears and short curving horns, hair on poll. Plain flaring kalathos between horns. Back plain with round vent-hole and end of signature incised after removal from mold: []ION. Interior of kalathos discolored by fire.
- 64. Wheel-thrown thymiaterion** Pl. 30
C-1976-59. P. H. 0.085, D. rim 0.098. Six joining pieces give profile to below flange; foot and part of rim missing.
Local. Fine, relatively soft, reddish yellow fabric (between 5YR 7/6 and 7.5YR 7/6) with few visible inclusions. Traces of white lime slip.
Wheelmade thymiaterion with hollow cylindrical stem foot to heavy horizontal flange; above is the bowl with oblique wall and everted horizontal rim.
Cf. *Agora* V, H15, M74, pls. 8, 21; such vessels are not uncommon in 1st-century contexts at Corinth; see also *Corinth* XII, no. 893, p. 131, pl. 66.
- 65. Casserole** Pl. 30
C-1976-67. H. to rim 0.048, est. D. rim 0.220 (slightly warped). Complete profile, one handle missing. Twelve joining fragments preserve almost one half.
Hard, reddish brown fabric (2.5YR 4/4) fired dark gray near surface and with small white, orange and clear inclusions.
Casserole with slightly convex bottom articulated from vertical wall, short flanged everted rim with thickened rounded lip, and two horizontal handles. Handles, circular in section, attached to lower wall and pressed lightly against lip. Flange on interior rim relatively high and sharply cut.
- 66. Casserole** Pl. 30
C-1976-66. H. to rim 0.060, D. rim 0.237. Complete profile; 17 joining fragments give most of whole, one handle missing.
Local. Hard, loosely compacted, red fabric (2.5YR 5/6) with medium-size oxidized white inclusions.
Cf. **65.** Slightly warped convex bottom. Rim heavy, outward thickened and beveled inward to pointed lip. Interior flange barely articulated. Handles, circular in section, attached to underside of rim and pressed against upper rim along most of their length.
- 67. Casserole rim** Fig. 4
Lot 1976-98:1. Single rim fragment.
Moderately compacted red fabric (2.5YR 5/8) with medium-size, rounded, translucent white in-

clusions and more angular oxidized white inclusions, and a few smaller round gray bits. Exterior surface blackened from rim.

68. Lid Fig. 4

C-1976-65. H. 0.033-0.043, est. D. rim 0.192 (badly warped). Complete profile; about one quarter preserved.

Hard, red to dark gray fabric (2.5YR 5/6, 10YR 4/1) with small to medium-size white and red inclusions.

Shallow conical lid with slightly everted rim and beveled knob handle deeply hollowed out. Wall has slight compound curve. Interior partly fire blackened.

69. Lid

C-1976-434. H. 0.056, est. D. rim 0.228. Complete profile; non-joining rim fragment in lot.

Hard, red fabric (2.5YR 5/6) with many small opaque white inclusions and mica visible on surface. Surface fired slightly iridescent reddish brown (2.5YR 5/4) to dull gray.

Cf. 68. Wheel ridges on exterior near knob.

70. Lid Fig. 4

Lot 1976-98:4. Single rim fragment.

Fabric similar to 67, but inclusions larger and more angular.

71. Stew pot Pl. 30

C-1976-68. P. H. 0.205, D. rim 0.356. Nearly complete profile; 40 joining fragments preserve about two thirds, part of one handle missing. Restored in plaster.

Local. Hard, loosely compacted, red fabric (2.5YR 5/7) with small to medium-size oxidized white inclusions.

Deep stew pot with curving bottom, bulging body, articulated, slightly convex vertical rim, two horizontal handles attached to upper body and pressed upward against rim. Body slightly sagging. Rim beveled inward from lip. Handles circular in section.

72. Stew-pot rim Fig. 4

Lot 1976-98:7. Single rim fragment.

Cf. 71. Characteristic drying cracks on surface.

IMPORTED COOKING WARES

Pompeian-red Ware (73-75 plus 1 sherd)

73. Haltern type 75A Fig. 5

C-1976-63. H. 0.053, est. D. base 0.520, est. D. rim 0.590. Outer floor and wall about one quarter preserved, center of floor missing; non-joining fragments in lot.

Hard, yellowish red fabric (5YR 5/6) with black, dark red and clear sand-size temper and with black and golden mica. Interior and rim slipped and polished; red slip (10R 4/8) with tiny silvery mica.

Baking pan with horizontal floor, flaring convex wall and rounded lip. Possibly moldmade. Three sets of grooves incised with a multiple point are preserved on floor; est. D. 0.284, 0.366, 0.445.

74. Haltern type 75B Fig. 5

C-1976-64. H. 0.044, est. D. base 0.370, est. D. rim 0.454. Fourteen joining fragments of rim and floor preserve almost half of circumference; center of floor missing.

Hard, yellowish red fabric (5YR 4/6), finer grained than 73, with opaque white and clear small sand-size temper and white mica. Interior and rim slipped and polished; micaceous red slip (close to 10R 4/8).

Pan with horizontal floor, flaring convex wall and thick, horizontal rim. Possibly moldmade. Two sets of four incised grooves preserved on floor, est. D. 0.226 and 0.294. Two holes drilled for lead repair clamps in rim and wall. Cf. M. Vegas, *C  ramica com  n romana del Mediterr  neo occidental*, Barcelona 1973, p. 49, form 15:7, fig. 16.

75. Pompeian-red-ware plate Fig. 5

C-1976-431 a, b. H. 0.041, est. D. base 0.280, est. D. rim 0.370. Two mended non-joining fragments of outer floor and rim.

Hard, micaceous and porous fabric with sand-size temper, fired reddish yellow (2.5YR 6/6-5YR 6/6) to brown (7.5YR 5/4) at surfaces, black at core. Mottled red slip (2.5YR 4/6) burned black over large parts of floor from use; interior burnished.

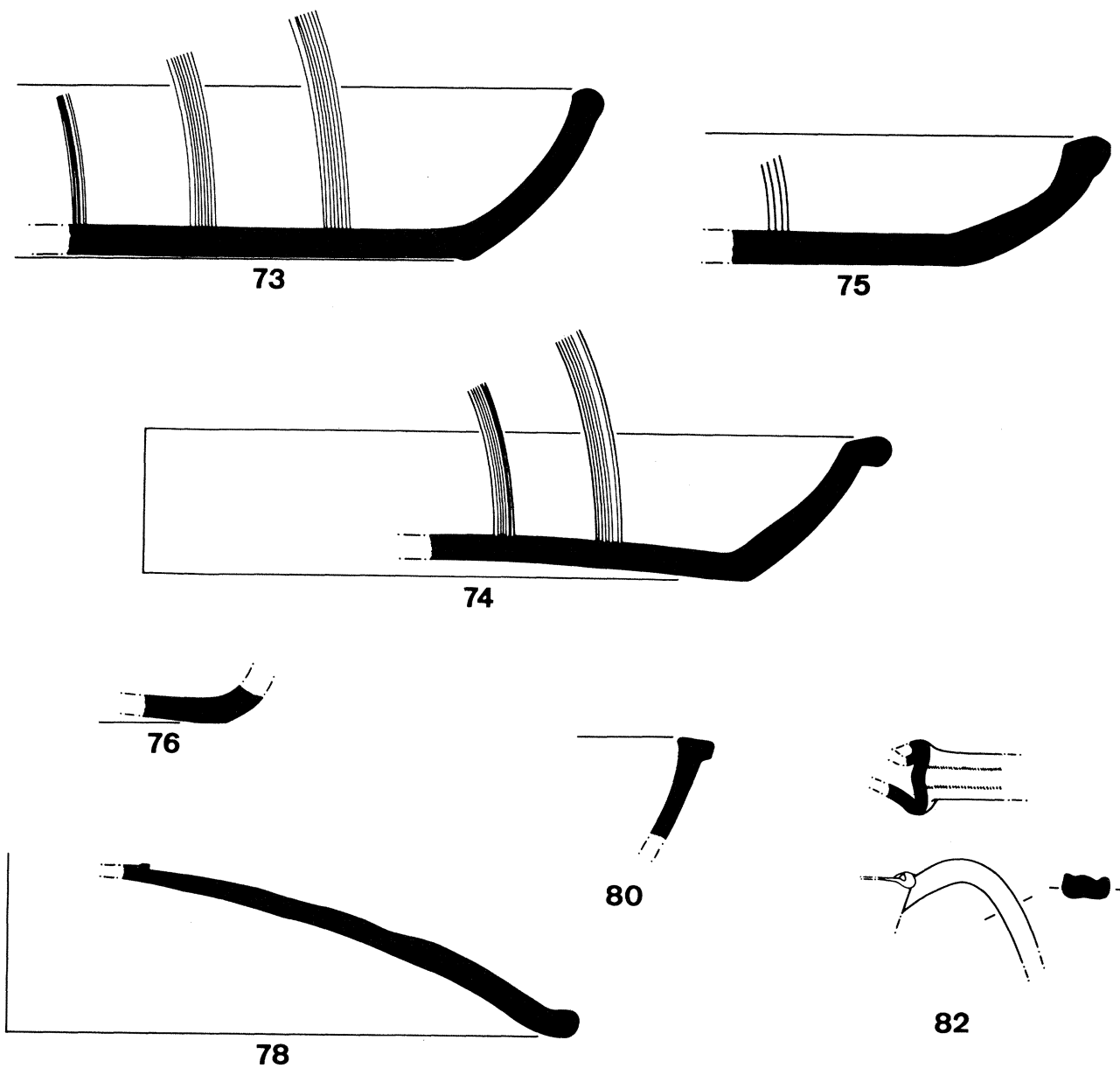


FIG. 5. Pompeian-red ware: 73–75. Other imported cooking wares: 76, 78, 80, 82. Scale 1:2.

Baking pan similar to 74, but with slightly inward beveled rim. Two sets of grooves incised on floor with a multiple point, est. D. 0.094 and 0.166. Base and lower exterior wall roughly finished.

Other Imported Cooking Wares (76–82)

76. “Orlo bifido” plate fragment

Fig. 5

Lot 1976–98:5. Single fragment of base of wall.

Homogeneous light-red fabric (2.5YR 6/8) with abundant, small, rounded black inclusions, a few white and fewer, larger dark red.

77. Frying pan Pl. 31

C-1976-433. Est. D. base 0.300, est. D. lip 0.368. Four joining fragments of floor and about one fifth of lip, handle missing.

Hard, coarse, light to dark brownish gray fabric (10YR 6/2, 10YR 4/2) with mica visible on surface. Rounded coarse sand imbedded in base.

Frying pan with horizontal floor, flaring concave wall to rounded lip. Interior wall slightly offset from floor. Burnishing marks on floor cover soot and should be from cleaning.

Cf. S. L. Dyson, *Cosa: the Utilitarian Pottery*, *MAAR XXXIII*, Rome 1976, 22II-43, fig. 46; P. Quiri, in *NSc* 26, 1972, suppl., "Sibari III," no. 309 (PdC 11336), p. 385, figs. 420, 448; *Agora V*, G113-G115, pls. 7 and 72.

78. Cooking lid Fig. 5

C-1976-432. H. 0.051, est. D. rim 0.345. Nearly complete profile, 12 joining fragments preserve about one fifth.

Hard, light-red fabric (2.5YR 6/8) with mostly small black inclusions, possible golden mica, also lime and quartz or feldspar; same as 76. Exterior surface wet smoothed; weak red (2.5YR 4/2) wash on rim.

Shallow domed lid with outward thickened rim and low ridge near top, est. D. ridge 0.080. Possibly moldmade. Outer 0.041 of interior fire blackened.

For the general type see Vegas (above, under 74), p. 52, form 16.

79. Olla or jar Pl. 31

C-1976-435. Est. D. lip 0.158. Three joining fragments of shoulder and rim preserve about one quarter of rim.

Very hard and dense fabric with small inclusions (mostly white and a few red), fired reddish brown in inner half (2.5YR 5/4), dark gray in outer half (2.5YR N3.5/); color change along sharp line. Lower interior surface almost iridescent.

Globular jar with sloping shoulder and high, inset neck with sharply everted rim. Neck tapers

slightly. Rim strongly concave on interior to receive lid. Two incised grooves with incised wave pattern between them at top of shoulder. Ridge below rim impressed by hand with piecrust decoration.

80. Cooking-pot rim Fig. 5

Lot 1976-98:2. Single rim fragment.

Lamellar red fabric (2.5YR 5/8) with moderate, small, slightly oxidized white inclusions and one or two orange bits.

For the shape cf. Dyson, *MAAR XXXIII*, PD27-29, fig. 31 and VD-20, fig. 20, identified as skillets.

81. Ovoid pitcher Pl. 31

C-1976-436. D. base of neck 0.035, est. max. D. 0.156. Fifteen joining fragments give nearly half of shoulder and part of lower wall, neck broken away at base.

Fine, very hard fabric, light brown (7.5YR 6/4 and yellow and redder) with fine inclusions and a few coarse black inclusions. Exterior surface covered by a finely micaceous pinkish gray to dark gray wash (7.5YR 6/2 to 10YR 4/1).

Pitcher with ovoid body, maximum diameter at base of broad shoulder, and narrow neck.

82. Pitcher with pinched mouth Fig. 5

Lot 1976-98:11. Mouth and handle mended.

Homogeneous light-red fabric (10R 6/8) with tiny white and dark inclusions, and probable mica; surface fired dark gray.

THIN-WALLED WARES (83-94 plus 62 sherds, 1 with painted decoration)

83. Beaker Fig. 6

C-1976-45. H. 0.067, D. base 0.061, est. D. lip 0.078. Complete profile. Fifteen joining fragments give most of base, two small sections of rim; non-joining fragments in lot.

Very fine, hard fabric, fired red (2.5YR 5/8) at core, gray at surfaces, with fine white inclusions. Totally slipped; lower exterior red (2.5YR 4.5/6), upper exterior and interior streaky gray (5YR 5/1) and light yellowish brown (10YR 6/4).

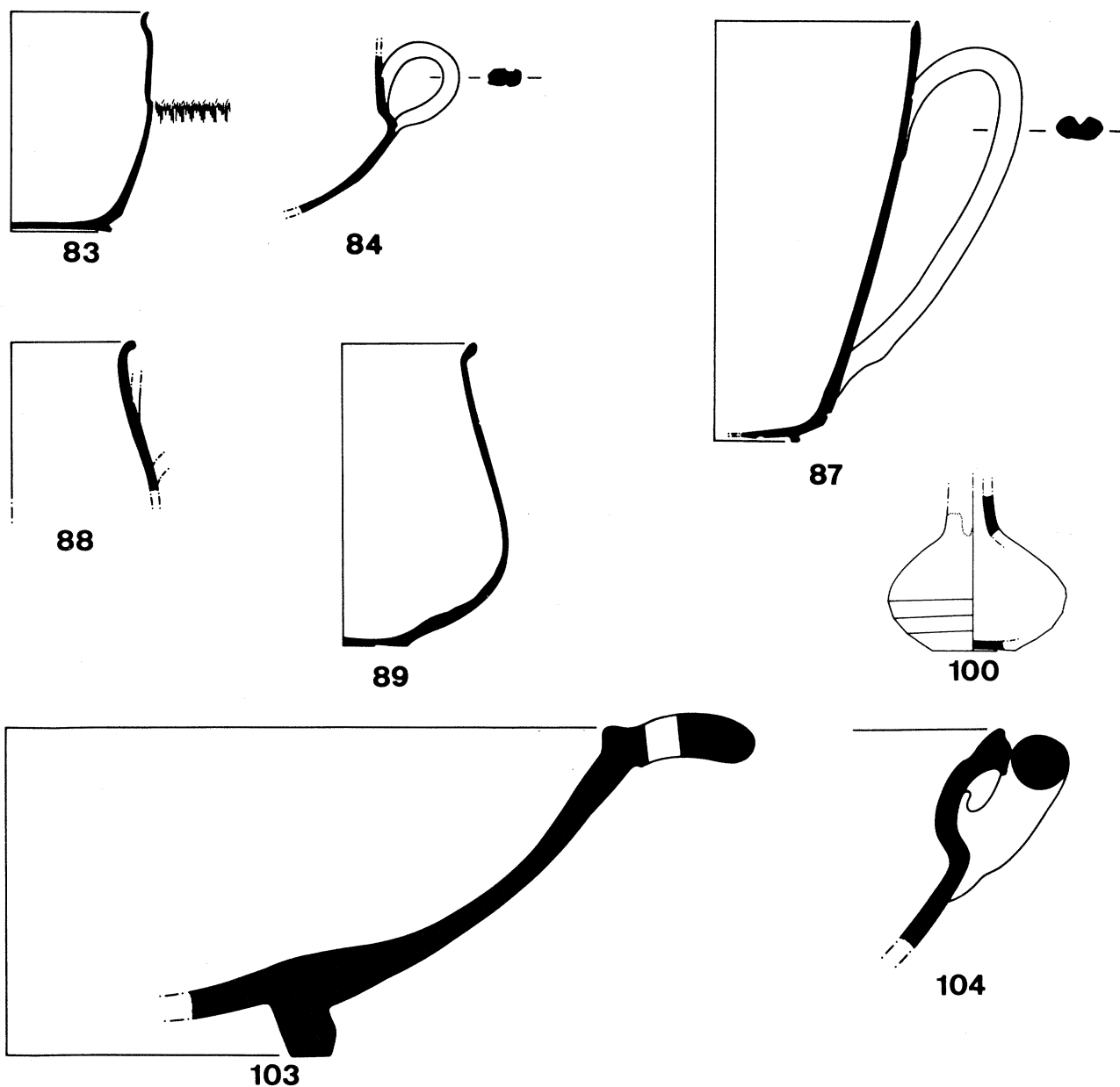


FIG. 6. Thin-walled wares: 83, 84, 87-89. Miscellaneous wares: 100, 103, 104. Scale 1:2.

Beaker with disk base offset from oblique wall. Tall inset rim with sharp carination between wall and rim on interior. Slightly everted lip defined by broad groove on exterior. Wide band of rouletting at top of exterior wall.

Form related to M. T. M. Moevs, *The Roman Thin Walled Pottery from Cosa (1948-1954)*, *MAAR* XXXII, Rome 1973, form XXXII, and to F. Mayet, *Les céramiques à parois fines dans la péninsule ibérique*, Paris 1975, form XVII =

Hayes, *Hesperia* 42, 1973, p. 461, no. 181, pl. 89 = C-36-2360.

84. Skyphos Fig. 6

C-1976-423 a, b. Est. max. D. 0.11. Two mended, non-joining fragments from just above base to just below rim and one handle, about one fifth of whole.

Fabric as **83**, some mica visible and upper body surface fired weak red (2.5YR 5/2).

Skyphos with flaring convex lower body to angular carination marked by groove. Vertical upper body inset. Vertical loop handles attached at mid-point of upper wall and to carination; single groove on handle. Groove on upper body, probably at mid-point between carination and rim.

85. Hemispherical bowl Pl. 31

C-1976-43. H. 0.064, D. base 0.054, D. lip 0.113. Complete profile. Thirteen joining fragments preserve most of vessel; non-joining fragments in lot.

Fine, hard-fired red fabric (10R 5/7 to 2.5YR 5/7) with scattered white inclusions and some mica, fired light reddish brown (5YR 6/4) below groove on exterior.

Bowl with disk base, broad lower wall curving to vertical upper wall, plain lip. Canted groove near exterior of undersurface of base. Groove on exterior upper wall.

Cf. Vegas (above, under **74**), type 34, variant *a*, p. 82, fig. 27:1; Moevs, *MAAR* XXXII, form XXXVI.

86. Hemispherical bowl

C-1976-44. H. 0.061. Complete profile. Five joining fragments give less than half; non-joining fragments in lot.

Fabric as **85**. Gritty, hard-fired red fabric (2.5YR 5/6) with white inclusions, fired reddish brown (near 5YR 5/3) at core where thickest.

Shape as **85**. Disk base has concave undersurface.

87. Tankard Fig. 6

C-1976-46. H. 0.128, D. base 0.051, est. D. lip 0.120. Nearly complete profile. Fifty-three joining fragments give just less than half; one handle missing.

Hard-fired, gritty red fabric (2.5YR 5/8), gray on exterior (5YR 5/1), with fine white inclusions and small orange inclusions.

Tankard with low angular base ring, angular carination between narrow bottom and high oblique wall, rounded lip. Two vertical handles attached below rim and to lower body. Groove 0.031 in diameter on interior of base; groove at base of wall above carination and another at level of upper handle attachment. Broad groove on handle.

Published: Williams, *Hesperia* 46, 1977, p. 77, no. 32, pl. 30.

Related to Moevs, *MAAR* XXXII, form LVI, and to Mayet (above, under **83**), form XIII.

88. Jug with flaring lip Fig. 6 (rim only)

C-1976-50. H. 0.082, D. lip 0.074. Nearly complete profile. Fifteen joining fragments give more than half; handle missing.

Slightly gritty, hard, micaceous fabric with white inclusions, fired red on interior (2.5YR 4/8) through gray core to light brown on exterior (close to 7.5YR 6/4).

Jug with flat base, ovoid body with maximum diameter below median, outturned lip. Single vertical handle attached above mid-body. Single groove incised at level of upper handle attachment.

Cf. Dyson, *MAAR* XXXIII, 22II-128, p. 135, fig. 52, which may be the same fabric, and CP-192.

89. Jug with flaring rim Fig. 6, Pl. 31

C-1976-49. H. 0.090-0.093, D. base 0.038. Complete profile, except handle. Fourteen joining fragments give base, about one quarter of rim.

Fabric as **88**. Slightly gritty, dark brown (7.5YR 4/2) to reddish yellow (5YR 4/6-5YR 6/6) fabric with white and orange inclusions.

Shape as **88** but with flaring, outward thickened rim.

Cf. *Corinth* XIII, no. 514-1, p. 297, pl. 99.

90. Bowl Pl. 31

C-1976-425. H. 0.101, D. base 0.046, est. D. rim 0.096. Complete profile, except handles. Eighteen joining fragments give complete base,

about half of body, small section of rim; non-joining fragments of rim and one handle in lot.

Hard, slightly gritty, dense red fabric (2.5YR 5/8) with fine non-calcareous white inclusions and mica. Upper exterior and whole interior surfaces mottled very dark gray (5YR 3/1) to dark reddish brown (5YR 3/2).

Bowl with false ring base, flaring lower wall with rounded carination to convex tapering upper wall, and convex everted rim. Off-center angular groove on underside of base; groove on upper exterior rim below lip; lip slightly squared. Upper handle attachment is to rim. Exterior surface smoothed.

91. Globular mug Pl. 31

C-1976-424. Est. D. lip 0.096. Thirteen joining fragments give about half of lower body and about one quarter of rim, handle missing; non-joining body sherds in lot.

Hard, very fine fabric with very fine to fine lime and mica. Surface of lower body and interior fired red (2.5YR 5/6); surface of upper exterior fired orange (2.5YR 6/6-5YR 6/6).

Mug has slightly sagging globular body with maximum diameter below median and angular everted rim. Single groove just below rim and another slightly lower. Vertical sliced handle attached between grooves, pressed up against rim and attached above median. Surface of lower body wiped while plastic to approximately level of stacking. Traces of burning on one side are probably from use.

92. Ovoid mug Pl. 31

C-1976-48. H. 0.080, D. base 0.038, D. lip 0.083. Complete profile. About one quarter of rim and upper wall missing.

Hard, gritty brown fabric (7.5YR 5/4) fired dark brown at base (7.5YR 4/2), light reddish brown above (5YR 6/5).

Mug with flat base, ovoid body with maximum diameter above median, everted rim. Interior of rim concave. Single groove on strap handle; handle attached to upper wall.

Published: Williams, *Hesperia* 46, 1977, p. 77, no. 31, pl. 30.

Cf. Hayes, *Hesperia* 42, 1973, p. 466, no. 232, pl. 90 = C-36-782.

93. Squat ovoid mug Pl. 31

C-1976-47. H. 0.078-0.081, D. base 0.048-0.052, D. rim 0.095. Complete profile, except handle. Many joining fragments preserve about two thirds; non-joining fragments in lot.

Gritty fabric, fired red at surface (2.5YR 5/6), gray at core (5YR 5/1), with scattered fine white inclusions and small red and black inclusions.

Mug with flat base, squat ovoid body with maximum diameter above median, inset convex rim. Single vertical handle attached to point of maximum diameter and to rim. Groove incised on shoulder.

94. Beaker Pl. 31

C-1976-437. D. base 0.047, Th. 0.002. Two joining fragments of complete base and wall to above median.

Hard fabric, slightly gritty and with small white and orange inclusions and mica, fired reddish gray and light reddish brown at core (5YR 5/2 to 5YR 6/3) and light red to reddish gray on surface (2.5YR 6/8).

Beaker with flat base and convex, slightly flaring wall.

Cf. Hayes, *Hesperia* 42, 1973, p. 466, no. 233, pl. 90 = C-36-1687, thinner but the same fabric; also CP-343.

KOAN/KNIDIAN CUPS (95-97 plus 7 sherds)

95. Two-handled cup Pl. 32

C-1976-51. H. to rim 0.077, max. H. 0.087, D. foot 0.069, D. rim 0.174. Complete profile. Many joining fragments including both handles.

Fine, hard-fired fabric with scattered fine inclusions and occasional mica; color varies from gray inside (10YR 5.5/1) to reddish yellow outside (5YR 6/6). Partially glazed; metallic glaze fired red to dark reddish brown (2.5YR 5/8, 5YR 3/1.5) on exterior, dark grayish brown (10YR 4/2) on interior.

Cup with low, flaring ring foot, oblique lower wall sharply carinated from slightly tapering upper wall, rounded lip. Two horizontal handles, doubled back on themselves and canted upwards, attached to upper wall. Central nipple inside foot.

Four palmettes carelessly stamped in circle near center of interior.

Published: Williams, *Hesperia* 46, 1977, p. 79, no. 39, pl. 31.

For the fabric and type of stamping, cf. *Agora* V, F29-31; for the attribution see J. W. Hayes, "Four Early Roman Groups from Knossos," *BSA* 66, 1971, p. 258, no. 8.

96. Two-handled cup Pl. 32

C-1976-52. H. to rim 0.077, max. H. 0.092, D. foot 0.072, est. D. rim 0.166. Complete profile, one handle missing; about half preserved.

Fine, hard-fired fabric with scattered inclusions, color varying from gray (7.5YR N5/) at core to red (5YR 7/6 to 5YR 6/3). Partially glazed; metallic glaze fired light red (2.5YR 6/8) to black on exterior, light olive gray (5Y 6/2) on interior.

Shape as **95** but rim slightly more vertical; no stamping on interior.

97. Two-handled cup Pl. 32

C-1976-53. H. to rim 0.079, max. H. 0.081, D. foot 0.075, D. rim 0.149. Complete profile, largely preserved including both handles. Glaze peeling.

Fine, hard-fired, light reddish brown fabric (5YR 6/5) with many fine white inclusions and mica. Partially glazed; dull dark reddish brown glaze (5YR 2.5/2). Overfired.

Ring foot beveled. Wide, steeply flaring lower wall, convex upper wall. Handles rounder in section and closer to wall than in **95** and **96**.

Published: Williams, *Hesperia* 46, 1977, p. 79, no. 38, pl. 31.

MISCELLANEOUS IMPORTED POTTERY (**95-106** plus 6 sherds as **98**, 10 as **99**, 1 other as **100**, 3-5 more fractional Koan amphoras, 1 Rhodian handle, 18 mixing-crater sherds as **104**)

98. Fusiform unguentarium Pl. 32

C-1976-54. D. base 0.020. Intact to just below rim.

Hard, micaceous fabric with inclusions, fired reddish brown (2.5YR 5/4) to gray (2.5YR N4/). White paint.

Fusiform unguentarium with flaring offset disk base and ovoid body with maximum diameter above median. Three white bands on body, shoulder and neck.

99. Bulbous unguentarium Pl. 32

C-1976-55. H. 0.101, max. D. 0.065, D. rim 0.031. Intact.

Hard, fine, pinkish brown fabric (7.5YR 7/3) with some tiny white, dark, and sparkling inclusions. Dull micaceous red (2.5YR 5/6) to dark gray glaze applied before final turning.

Bulbous unguentarium with slightly concave base, ovoid body with maximum diameter below median, horizontal lip. Base off-center from rim.

Cf. *Agora* V, G97.

100. Bulbous unguentarium Fig. 6

Lot 1976-98:9. Single fragment, mouth missing.

Dense fabric, core red (2.5YR 5/6) banded reddish brown (5YR 5/3) to red at surface (near 5YR 6/6), many tiny inclusions. Red glaze on neck.

Bulbous unguentarium with nearly biconical body.

101. Koan amphora, fractional Pl. 32

C-1976-429. P. H. 0.190, D. lip 0.068. Three joining fragments give part of rim and upper neck, one whole handle and angle of shoulder.

Medium hard, gritty, reddish yellow fabric (lighter than 5YR 7/6) with small white and dark inclusions, a few red (possibly grog), and a little possible mica. Slipped or wet smoothed; pinkish white surface (5YR 8/2 to 7.5YR 8/2) allows some inclusions to show through.

Shoulder rather steep, oblique. Vertical, double-rolled handle to level of lip turns sharply downwards to attach slightly below rim; bent in slightly to shoulder at lower attachment. Exterior wall of neck bulges slightly at level of handle and then contracts below undercut collar rim 0.017 high. Interior of neck smoothed, turning marks on interior of shoulder.

102. Amphora Pl. 32

C-1976-430. P. H. 0.087, D. rim 0.086. Joining fragments give part of rim, neck and shoulder with upper and lower handle attachments of one

handle; two joining and a few non-joining pieces in lot.

Hard, fine, light-red fabric (2.5YR 6/8) with occasional small, red and dark inclusions and mica. Interior neck glazed to level of upper handle attachment; exterior glazed to base of neck and to upper shoulder; slightly micaceous light-red to red glaze (2.5YR 6/5–2.5YR 5/8) with metallic sheen.

Storage or table amphora with broad convex shoulder, short, slightly tapering neck, and outward rounded and thickened rim. Oblique groove on upper neck at level of upper handle attachment. Strap handle attached to upper neck curves upwards; lower attachment to shoulder near neck.

103. Mortarium Fig. 6

C-1976-69. H. 0.103, est. D. rim 0.454. Complete profile except center of floor; nearly half preserved.

Fine, very pale brown fabric (about 10YR 7.5/3) with tiny white and red inclusions. Black and dark red grits, medium to coarse, pressed into surface of interior. Interior and rim wet smoothed.

Mortarium with heavy ring foot, flaring convex wall and wide everted horizontal rim. Rounded flange between wall and rim on interior. Two suspension holes pressed through wet clay of rim from top to underside.

104. Mixing-crater fragment Fig. 6

Lot 1976-98:8. Single rim fragment.

Fabric has a red core (2.5YR 6/8) and a light brown surface (7.5YR 6/4), with abundant tiny white, black, and oxidized (orange) white inclusions and a few large, angular, white and dark inclusions.

105. Two-handled jar Pl. 32

C-1976-57. H. 0.229, D. foot 0.078, D. lip 0.126. Complete profile; nearly complete.

Hard, gritty white fabric (2.5Y 8/2) with dark red inclusions, small to large, and a few small black inclusions.

Jar with ring foot slightly offset from body, ovoid body with maximum diameter above median, articulated vertical neck, thickened everted rim slightly undercut on exterior, two vertical strap handles. Broad concave band on interior of

rim to receive a lid. Ridged handles attached to upper body.

106. Ring stand Pl. 32

C-1976-62. H. 0.032, inner D. 0.060. Intact.

Hard, gritty, white fabric (between 10YR 8/2 and 2.5Y 8/2) with tiny-to-small, dark red inclusions.

Ring stand with slightly tapering concave profile articulated by rounded moldings at top and bottom. Resting surface beveled slightly inwards, as is top surface. Graffito on concave exterior:

DMATL|EAL.

LAMPS (107-121 plus 125 sherds)

107. Broneer type XVI, moldmade Pl. 33

L-1976-35. H. 0.030, D. 0.060. Single fragment of about half of body; nozzle and handle missing; glaze worn.

Local. Soft, porous fabric, pink to very pale brown (between 7.5YR 8/4 and 10YR 8/4). Exterior glazed; drips on interior; glaze very dark gray (10YR 3/1) going to pink (7.5YR 7/4) at finger smears.

Moldmade lamp with slightly concave disk base, oblique lower wall with rounded carination leading to tapering upper wall, inset flat discus. Large filling hole. Wick-hole close to body shows signs of soot. Handle attached to upper wall was added separately, and both the upper and lower joints had cracked through almost completely before glazing. There is a fragment of a second moldmade and glazed type XVI in the lot.

Cf. *Corinth* IV, ii, nos. 198-201 and pp. 56-57; nos. 198-200 come from strata of the first half of the 1st century after Christ, and no. 201 has no context.

108. Broneer type XVI, wheelmade Pl. 33

L-1976-2. H. 0.032, including handle 0.047, D. 0.058, L. 0.122. Complete. Glaze flaking.

Probably not local. Pink fabric (near 7.5YR 7/4) with small white inclusions. Red glaze (2.5YR 5/8) has dull-to-oily luster.

Shape as **107** but wheelmade. String-cut disk base. Sides nearly vertical curving into concave

discus. Ribbed handle attached to upper body. Traces of burning at wick-hole.

109. Broneer type XVI, wheelmade Pl. 33

L-1976-3. H. 0.030, D. 0.052. Seven joining fragments; handle and part of discus missing.

Local. Brittle, gritty fabric, brown (7.5YR 5/2) at core, yellowish red (5YR 5/6) further out; numerous small translucent inclusions (perhaps quartz or feldspar).

Cf. **108.** Sliced disk base. Squat convex body and slightly offset rim. Deeply inset discus. Surface burned.

110. Broneer type XVI, wheelmade Pl. 33

L-1976-8. H. 0.032, max. D. 0.064. Intact except for handle.

Local. Brittle, slightly gritty red fabric (near 3YR 5/8) with tiny white inclusions.

String-cut base. Squat, strongly convex body.

111. Moldmade lamp Pl. 33

L-1976-33. H. 0.030, including handle 0.055, D. base 0.031, D. body 0.062. Complete except for small section of rim, part of nozzle and back of handle. Glaze flaking, resting surface worn.

Hard, micaceous, fine reddish yellow fabric (5YR 7/7). Red glaze (2.5YR 5/6) with slight metallic luster, going to very dark gray (2.5YR N3/) under handle.

Moldmade lamp with indistinct raised base ring, double convex body with sharp carination, flat ridge marking off concave center, vertical band handle; nozzle has sharp top and triangular termination, and underside of nozzle has a sharp angle from tip to base of lamp; large wick-hole. Used.

Cf. R. H. Howland, *The Athenian Agora*, IV, *Greek Lamps and Their Survivals*, Princeton 1958, type 50B.

112. Broneer type XIX Pl. 33

L-1976-34. H. 0.036, including handle 0.043, D. flange 0.045. Single fragment, nozzle and part of base missing.

Soft, slightly gritty fabric, white to light gray (between 10YR 8/1 and 10YR 7/1) with fine, dark, and a few orange inclusions. Brown (7.5YR 5/4) to very dark gray (7.5YR N3/) wash covers interior and exterior to lower body.

Moldmade lamp with flat base, double convex body with angular carination, flange around filling hole (upper surface of flange convex); vertical band handle has a central rib and is attached at carination and to upper body against flange.

L-75-14, another type XIX lamp, has the same fabric.

113. Broneer type XXI Pl. 33

L-1976-10. H. 0.043, D. 0.102. Complete profile of body and large part of nozzle preserved; handle and handle shield missing. Non-joining fragment of discus in lot.

Relatively soft, fine pink fabric (7.5YR 8/4 and yellower) with few visible inclusions. Thin, micaceous, reddish yellow wash (mostly 7.5YR 7/6 and 7.5YR 6/6) going to dark gray in grooves (7.5YR N4/).

Large moldmade lamp with raised base ring and double volute nozzle with rounded termination. Rounded shoulder. Five molded bands at edge of discus. Many-petaled rosette on discus. Rectangular air-hole at back of neck channel. Marks of burning around large wick-hole.

114. Broneer type XXI Pl. 33

L-1976-4. H. 0.034, including handle shield 0.071, D. 0.071. Two joining fragments, part of handle and tip of nozzle missing, relief flaked away from discus. Surface flaking badly.

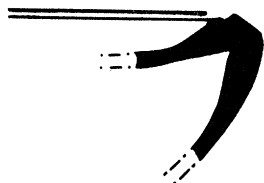
Local? Gritty white to very pale brown fabric (10YR 8/2 to 10YR 8/3). Thin reddish yellow wash (7.5YR 6/6) going to dark gray in the crevices (7.5YR N4/).

Shape basically as **113** but join of wall and discus sharp. Three molded bands at edge of discus. Air-hole on nozzle not pierced through. Triangular handle shield with over-all leaf design. Pierced moldmade handle. Traces of burning around wick-hole.

Cf. Loeschcke, *Lampen*, p. 213, fig. 2, shoulder IIa, type III, pp. 222-224; also *Corinth* IV, ii, fig. 34:5, p. 74.

115. Broneer type XXII Pl. 33

L-1976-5. H. 0.025, D. 0.075. Nine joining fragments give front half of lamp, including nozzle.



117

FIG. 7. Lamp 117. Actual size.

Local? Brittle white fabric (5Y 8/2), finely gritty. Thin slip, mottled strong brown (7.5YR 5/6) to brown (7.5YR 5/2).

Moldmade lamp with raised base ring, widely flaring body, and large discus with relief decoration. Three molded bands at edge of discus. Relief decoration, seated centaur conversing with a nude youth who has a bag slung over his left shoulder: Chiron instructing young Achilles. Narrow nozzle with shoulder volutes; air-hole. Base: within ring, [?] P.

Cf. G. Heres, *Die römischen Bildlampen der Berliner Antiken-Sammlung*, Berlin 1972, no. 38, pp. 21–22, pl. 8, from Corneto; also Loeschcke, *Lampen*, p. 213, fig. 2, shoulder IIa, fig. 1, nozzle Ia.

116. Broneer type XXII Pl. 33

L-1976–36. H. 0.035, est. D. 0.070. Six joining fragments give right side from nozzle to back and one quarter of lower body to base ring.

Medium soft, white fabric (10YR 8/1 to 10YR 8/2), slightly gritty but with no visible inclusions, a few tiny voids. Glaze mottled very dark gray (7.5YR N3/) to pinkish gray (7.5YR 6/2).

Shape as 115. Base ring faint. Triple ridge around discus is interrupted by a channel at the nozzle. Relief decoration appears to have been a series of weapons, of which two shields are preserved. Triangular nozzle with shoulder volutes; burning on nozzle. Within base ring part of one letter of signature.

The rim profile is a variant of Loeschcke, *Lampen*, fig. 2, shoulder I.

117. Fragment Fig. 7

Lot 1976–98:6. Single fragment.

Local? Medium soft, white fabric (2.5Y 8/2) with many tiny voids and fewer black inclusions, one or two red inclusions. Thin dull glaze, strong brown (7.5YR 5/6) to dark grayish brown (10YR 4/2–4/3).

This rim with a narrow bevel at the outer edge is typologically the latest rim in the deposit.

118. Fragment Pl. 33

L-1976–6. P. W. 0.045. Single fragment, complete discus.

Same as 114, 115. Brittle, very pale brown fabric (10YR 8/3), fine grit. Thin wash, strong brown (7.5YR 5/6) to dark gray in crevices (7.5YR N4/).

Relief decoration: Medusa head with hair drawn back and two snakes knotted under chin. Hole pierced through mouth; filling-hole at lower edge of discus. Two small globules of clay in dimples of cheeks indicate this was made in a plaster mold.

For a similar Medusa head cf. H. Goldman and F. F. Jones, "The Lamps," in *Tarsus I*, no. 149, p. 110, fig. 99.

119. Fragment Pl. 33

L-1976–7. P. W. 0.041. Single fragment of discus.

Cf. 114, 115, and 118. Brittle, very pale brown fabric (10YR 8/3), fine grit. Thin wash, strong brown or reddish yellow (7.5YR 5/6 and 6/6) going to dark gray in crevices (7.5YR N4/).

Relief decoration: Pegasos flying left.

Cf. Loeschcke, *Lampen*, no. 200, pl. 376, pl. XII.

120. Fragment Pl. 33

L-1976–9. P. W. 0.046. Two joining fragments of discus.

Italian? Slightly soft, pink fabric (7.5YR 8/4) with a few fine inclusions. Worn glaze, light red where thin (2.5YR 6/6) but mostly reddish brown (2.5YR 4/4).

Relief decoration: two figures seated side by side on draped chairs or on a couch. Nude male figure on left rests left arm on seat, has right arm raised. Semidraped female figure on right leans on

companion's shoulder; her himation is wrapped around her legs and gathered in her lap.

Cf. L-74-16, which is from a different mold.

121. Signed fragment Pl. 33

L-1976-11. P. W. 0.056. Three joining fragments of base and lower wall.

Slightly soft, light gray fabric (10YR 7/1). Glaze strong brown (7.5YR 4/6) to dark brown (7.5YR 3/2).

Within flat base-ring, two narrower rings and a signature: IVLI incised directly onto lamp before glazing. The third letter was made with the horizontal at the top rather than at the bottom of the vertical stroke.

GLASS (122-127 plus 8 fragments including pre-Roman)

122. Isings form 3 c Fig. 8

MF-1976-124. Est. D. rim 0.150. Single fragment of rim and upper wall. Non-joining sliver in lot.

Light olive-green glass with rough surface and strong iridescence.

Open bowl with low flaring wall and flaring rim with rounded lip. Short, slightly oblique ribs around center of body. Broad groove on interior separates wall from rim.

Cf. Hayes, *Glass*, no. 49, p. 20, fig. 2; *Corinth* XII, no. 601, p. 96; *Ostia* II, p. 76, pl. XV, fig. 229.

123. Isings form 3

MF-1976-125. P. H. 0.021. Single fragment of part of base and lower wall.

Light greenish blue glass with rough exterior surface and slight iridescence.

Bowl with slightly concave base and oblique lower wall. Lower ends of two widely spaced ribs preserved, do not extend to base.

Cf. Hayes, *Glass*, no. 47, p. 19, fig. 1.

124. Isings form 2 Fig. 8

MF-1976-127. D. rim 0.160. Five joining fragments, rim to lower wall; single non-joining fragment of lower wall in lot.

Opaque, dark olive-green glass with occasional amber rods and one or two rose rods, weathered black (late millefiori); *saftgrün*, *bernsteinfarben*, *rosa* (Berger, p. 96).

Bowl with flaring, double-convex wall and narrow, outturned, nearly horizontal rim. Fine striae on interior and exterior.

Cf. Hayes, *Glass*, no. 55 (profile), nos. 59-64, pp. 21, 24-25, fig. 2, pl. 5; Berger, nos. 38-40, p. 28, pl. 3; *Ostia* II, p. 77, pl. XV, fig. 235.

125. Isings form 1 Fig. 8

MF-1976-126. P. H. 0.048, Th. 0.001-0.004. Five joining fragments of rim and wall; possible non-joining fragments of same in lot.

Glass varies from amber near lip to light orange below (Berger, p. 96) with rough exterior surface and strong iridescence to milky weathering. Polishing marks on interior and exterior rim.

Plain bowl with slightly flaring convex wall and rounded lip. On interior, groove below lip and double groove part way down wall.

Cf. Hayes, *Glass*, no. 43, p. 18, fig. 1; *Ostia* II, pl. XV, fig. 233.

126. Skyphos with spur handles Fig. 8

MF-1976-123. L. of handle 0.028, Th. 0.001. Single fragment of handle spur and attachment to wall; lower part of handle missing.

Amber colored glass (Berger, p. 96) with rough surface and thin milky weathering.

Skyphos with vertical wall to level of upper handle attachment where it begins to turn outwards. Handle a separate piece attached with a broad tongue running down the wall; spur handle with rounded outer edge thinned and flattened, and lower member attached at an angle at this point.

Cf. Berger, no. 213, pl. 14, and no. 97, pl. 22.

127. Fragment Fig. 8

MF-1976-128. Est. D. rim 0.092, Th. 0.001. Three joining fragments of rim and upper wall.

Light amber, transparent glass with very smooth surface on interior; *bernsteinfarben* (Berger, p. 96). Iridescent and milky weathering; interior surface lightly pitted all over. Cup (?) with maximum diameter near median and concave, tapering upper wall to square lip. Groove below lip on exterior.

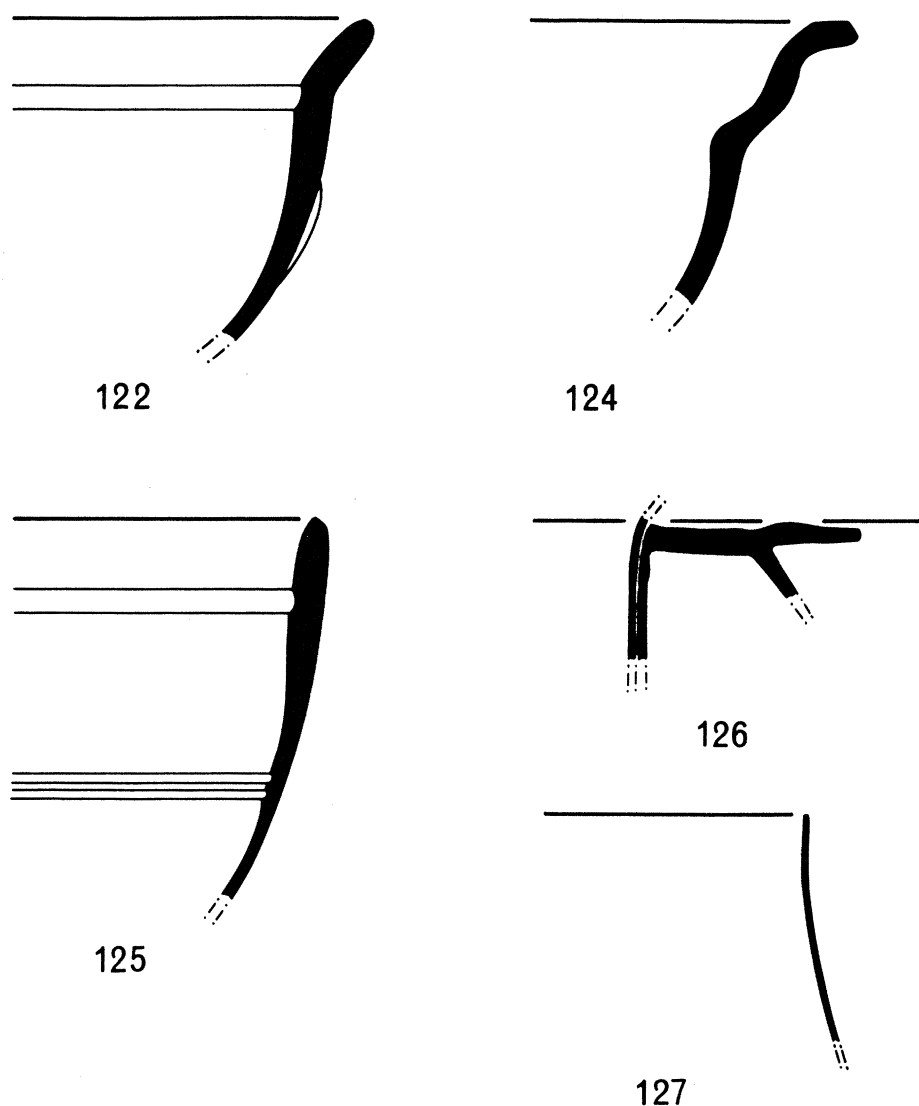


FIG. 8. Glass: 122, 124–127. Actual size.

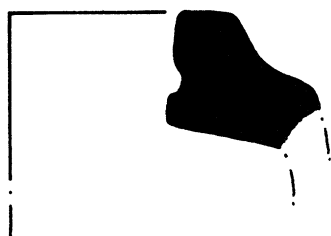
MISCELLANEOUS FINDS (128–132)

128. Faïence amphora shoulder Fig. 9
MF-1976-129. P. H. 0.018, est. D. mouth
0.050. Several joining fragments give more than
one quarter of circumference of shoulder only.
Surface badly worn.

Faïence, grayish white frit with a turquoise-to-
white surface.

Narrow, slightly sloping, amphora shoulder with
a thickened ring at base of neck. Sharp angular
carination between wall and shoulder. Groove on
interior of necking ring.

Cf. A. M. Donadoni Roveri, "Due vasi impe-
riali di faïence al Museo Egizio di Torino," in
Hommages à Maarten J. Vermaseren I, Leiden
1978, pl. LIV.



128

FIG. 9. Faience amphora fragment 128. Actual size.

129. Bone pin

Pl. 32

MF-1976-12. L. 0.083. Intact.

Bone pin with short, pointed, oval shaft and decorative head in the form of a woman's head. Transition between shaft and head marked by an oval section with diagonal grooves on lower part. Female head has hair parted in center and drawn back to a bun; hair around face rolled back and possibly bound by a fillet, then incorporated into bun; a lock of hair hangs down behind each ear; features sharply cut and small mouth pinched. Neck thick and cut in angular planes.

For the general type cf. *Corinth* XII, no. 2348, p. 285, pl. 119.

130. Bone die

Pl. 32

MF-1976-18. Cube 0.016 on each side. Single piece, drilled from both sides through two of the parallel faces and now hollow.

Bone die. Value of the faces marked by incised circle around a central dot. Values 1, 2, 5, and 6 preserved; 3 and 4 drilled through.

Cf. *Corinth* XII, no. 1745, pl. 100, but the arrangement of the faces in 130 is normal.

131. Conical loomweight

MF-1976-11. H. 0.087, D. bevel 0.065. Intact but worn at bevel and bottom scarred and worn.

Corinthian conical loomweight with two stamps: oval stamp above bevel has loomweight with base and rod through suspension hole; rectangular stamp below bevel inscribed MEAIΣ. Possibly re-used as a pounder or pestle.

Cf. *Corinth* XII, nos. 1163-1166, pl. 74.

MF-1976-16, a Greek terracotta spindle whorl or spool, and MF-1976-17, a Neolithic celt, have been omitted from this catalogue.

132. Stamped roof tile

Pl. 32

FP 299. P. L. 0.114, p. W. 0.099, Th. 0.034. Single fragment, broken on all sides.

Corinthian fabric, pink at core, tan at surface, with coarse, black and red inclusions.

Flat pan tile, coarsely finished on one side, slipped on the other. On the finished surface part of a rectangular stamp, p. L. 0.055, W. 0.024, letter H. 0.018, in Latin: []DAET. The last letter is inverted.

Cf. FSt 14, FSt 64, FSt 68, FSt 119, FSt 124, FSt 135, of which FSt 68 is published in O. Broneer, *Corinth*, X, *The Odeum*, Cambridge, Mass. 1932, fig. 135:b, pp. 137-138.

Discussion of the Catalogue

The Arretine vessels in the floor deposit find their closest parallels at Haltern (five examples) and in level B-2B' at Bolsena (four examples). Comfort and Ettlinger have already objected⁹ to Goudineau's early date for cups like 8 and this objection seems confirmed by the range of other Arretine shapes in this deposit; 8 is the first example of this shape identified outside Italy. 9 and 10 have parallels at Haltern and in level A-2A at Bolsena, and the presence here of a Haltern type 3, a Haltern type 9, and a Haltern type 15, forms which are rare and typologically late at Haltern, suggests a date for the

⁹H. Comfort, rev. of *Bolsena* IV, *AJA* 74, 1970, pp. 311-312; E. Ettlinger, rev. of *Bolsena* IV, *Germania* 49, 1971, pp. 264-271 reprinted in *Rei Cretariae Romanae Fautorum Acta*, Suppl. 2, 1977, p. 275.

Corinth deposit at least as late as A.D. 9. The single example of an applied spiral handle on **7** confirms this, for it is the only kind of appliqué found on undecorated forms at Haltern or in the early group at Vindonissa.¹⁰ A-2A-11 at Bolsena is a likely parallel for **15**; Comfort and Hayes consider that this form, Dragendorff form 4, was introduced about A.D. 15.¹¹

The three Italian stamps from the deposit are all rectangular. Despite the poor preservation of **15** the identification with He(l)enus P. Corneli seems assured by the form of the vessel: another specimen of the same form and fabric and with the same stamp has been found at Corinth.¹² Aside from numerous other occurrences the appearance of a stamp of Hilarus Saufei in level B-2B' at Bolsena should be considered in conjunction with the typological parallels noted in the preceding paragraph. All three of the potters represented probably worked at Arezzo and, although He(l)enus P. Corneli and Phila() Avilli are scarcely known outside Italy, the products of Hilarus Saufei have a Mediterranean, rather than a northern European, distribution.

The four Arretine relief vessels in the floor deposit are of considerable interest. Two are modiolis and two are craters, and all were probably manufactured by M. Perennius Bargathes, whose stamps appear on **1**. The enlarged pearls at the corners of both the Bargathes and M. Perennius stamps make the attribution of **1** to Bargathes Master B certain¹³ although no parallel exists for the heavy stem of the grape wreath, and the laurel wreath was previously attributed only to Tigranus.¹⁴ Duplicates of the individual stamps of **4**, such as the spiraling nautili, rosettes and possibly the ovolo, were attributed individually to Bargathes Master B,¹⁵ and this piece is also likely to be his work. The closest parallel for **3** is also by Bargathes. Unfortunately none of the relief decoration of the second modiolus was found, but its rim is closely paralleled in level B-2B' at Bolsena, a site where Perennian relief wares are dominant.

The period of Bargathes' activity within the workshop of M. Perennius is well known stylistically,¹⁶ but is nearly unknown from excavations. Along the Rhine the products of Tigranus are much more frequent than those of his successor Bargathes. Since both are found at Haltern along with a quantity of material of the provincial Ateius workshops¹⁷ there are two possibilities: 1) Bargathes was an Augustan potter who lost his German markets to the provincial Ateius factory, or 2) he began working as an independent potter only shortly before the destruction of Haltern. The latter alternative is corroborated at Bolsena. Although Goudineau rejected any congruence between the

¹⁰E. Ettlinger and R. Fellmann, "Ein Sigillata-Depotfunde aus dem Legionslager Vindonissa," *Germania* 33, 1955, pp. 364-373, pl. 35.

¹¹H. Comfort, "Imported Western Terra Sigillata," in *Antioch IV*, i, no. 214, pp. 76-77, note 182; Hayes, *Hesperia* 42, 1973, form 25, table 1, p. 449.

¹²C-37-1571.

¹³D-W, pp. 51-53.

¹⁴D-W, pl. 13:188 and 189.

¹⁵D-W, pl. 20:208, 338, pl. 21:217, 337, all discussed on pp. 51-53.

¹⁶A. Stenico, *EAA VI*, s.v. "Perennius," pp. 34-35.

¹⁷A. Oxé, *Arretinische Reliefgefäße vom Rhein*, Frankfurt 1933, p. 4.

stratigraphy of Bolsena and the relief sherds found, only one sherd of Bargathes as an independent owner was found in level B-2A, of which the plain vessels are later than Haltern, and *all* the relief vessels from the two latest strata (C-2B and C-2A) were of this potter. It therefore appears that, although he was producing independently in the last years of Augustus, Bargathes' production is overwhelmingly Tiberian, possibly extending into the early years of Claudius. The time at which one would expect to find a group of relief vessels only by Bargathes would be under Tiberius, although the Haltern connections of both the plain and relief wares in the floor deposit indicate a date earlier rather than later in his principate.

Eastern sigillata wares in general cannot be dated as precisely as their western counterparts, a difficulty which is due largely to the lack of historically dated deposits in the East but also to the fact that the individual vessel forms do not change as quickly. Three of the Eastern Sigillata A vessels in the floor deposit may be compared to pieces from the Roman Ia deposit at Samaria;¹⁸ the parallels to **18** and **23** are particularly convincing. To the late characteristics listed by Kenyon¹⁹ and confirmed here, i.e. heavier forms, more matt glaze, lack of a groove at the junction of base and wall on plates, and a step inside the base, may be added the disappearance of palmette stamping and a tendency to limit the amount of rouletting. The only dated example of Samaria form 11 (as **20**, **21**), *Agora* V, G9, comes from a Tiberian context;²⁰ in several other instances at Corinth these saucers are found in pairs. Relief vessels such as **17** have been generally assumed to imitate Augustan Arretine relief vessels and therefore have been assigned an Augustan date,²¹ although only the pieces from Tarsus have a context: the Roman Fill of the mid-1st century after Christ; **17** can clearly be dated in the Tiberian period. **24** is the first recorded example of a lid in Eastern Sigillata A fabric; the possibility that it is the shoulder of a pitcher seems excluded by the direction in which the glaze has dripped on the interior. As at Samaria it is clear that the so-called "Hellenistic" and "early Roman" forms of Eastern Sigillata A were being used side by side in the first quarter of the 1st century after Christ.

Eastern Sigillata B is very rare in the floor deposit and the only recognizable forms are plates; this paucity probably indicates that it was only beginning to be imported into Corinth at the time of the earthquake. The plate, **25**, is substantially complete and must be dated to the time of the deposit. The earliest piece similar to **26** was previously thought to come from a Claudian context.²² **27** is the second Eastern Sigillata B sherd on which radial stamping has been found;²³ it is presumably an imitation of the Arretine practice. The rarity of radial stamping on Eastern Sigillata B suggests that the practice

¹⁸ *Samaria-Sebaste* III, pp. 286, 289–290, 295–298, including fig. 68.

¹⁹ *Samaria-Sebaste* III, pp. 289–290.

²⁰ Hayes, *Hesperia* 42, 1973, p. 425; group G level IIa.

²¹ *Hama* III, ii, p. 194, and Hayes, *Roman Pottery in the Royal Ontario Museum*, Toronto 1976, pp. 18–19.

²² Mitsopoulou-Leon, fig. 5:i and col. 523.

²³ Mitsopoulou-Leon, col. 510 for ΔΙΟΦΑΝΟΥ radially.

was only adopted about the turn of the era and rapidly abandoned. Pothos, Iatroclus and Diophanos are thus among the earliest potters of this ware; the fact that Iatroclus signs the Latin form of his name is another indication of this.²⁴

Aside from the imported sigillata and the Corinthian red-glazed pottery discussed below, two other red-glazed fabrics, represented by three vessels, were found in the floor deposit. **29** and **30** are Attic, and the latter has a counterpart in the Tiberian part of Group G in the Athenian Agora, although it was probably a long-lived form. Plates of the same fabric as **28**, but which imitate the Eastern Sigillata A Samaria form 1, are also found in Corinth; the source of this fabric is therefore probably eastern.

On many eastern Mediterranean sites intentionally reduced, black-glazed pottery, usually with a gray or reddish gray fabric, is found in small amounts alongside the more common early Roman sigillata wares.²⁵ This is called "gray ware" and specimens of several different fabrics were present in the floor deposit. Fragments of large platters or trays like **31** are not rare in 1st-century contexts in Corinth and examples are also found elsewhere in Greece;²⁶ the frequency and fabric of pieces found at Ephesos suggest southwestern Asia Minor as a source. **34** is apparently the same ware. A few vessels at Corinth with the same profile and partial glaze are fired red, and other plates in this ware have Eastern Sigillata B profiles; this strengthens the hypothesis that this gray ware comes from southwestern Asia Minor. **36**, and possibly **39**, represent a second eastern "gray ware"; the former is a distant, or late, relative of the "Delian" bowls which flourished a century earlier.²⁷ A western source for some "gray ware" is suggested by **33**, of which the profile has parallels in Campana C ware from Sicily.²⁸ The popularity of "gray ware" at this time is attested by the appearance of local imitations such as **38**, a form which was also made at Corinth with a red glaze.

Locally made fine wares slightly predominate over the total of imported fine wares in this deposit. Imitations of Arretine are relatively few and **40–42** represent all the forms present. Although plates of Haltern type 2 were imported to Corinth at this time (**5**, **6**), there are no local imitations of this form in the floor deposit, and the imitations of the plain Arretine therefore recall the sigillata present at Oberaden rather than that at Haltern; it is possible that there was a time lag between the importation of a new Arretine form and its imitation by local potters. **41** is one of the two common profiles of imitation Haltern type 1 at Corinth; an Arretine plate with exactly the same profile was

²⁴Latin names and forms are rare among Eastern Sigillata B stamps and should probably all be connected with the original Italian proprietors of the industry. On these see most recently J. R. Wrabetz, "A New Serenus Stamping from Sardis and the Origins of the Eastern Sigillata B Ware," *HSCP* 81, 1977, pp. 195–197.

²⁵E.g. *Tarsus* I, nos. 527–542, 544, 556, 557, pp. 184–186 with references to Pergamon and Olbia; Ephesos: Mitsopoulou-Leon, cols. 505–506, fig. 4; *Agora* V, F26, F27, G46, G47, G74, G75, G87, G89, G91, G92, G168.

²⁶E. Kunze, ed., *Bericht über die Ausgrabungen in Olympia* VI, Berlin 1958, p. 49, fig. 28:a, d.

²⁷On the appearance of these bowls in Corinth see C. K. Williams, II, "Corinth 1977, Forum Southwest," *Hesperia* 47, 1978, p. 23 and note 34, nos. 23 and 24, pp. 36–37, pl. 3.

²⁸P. Pelagatti, "Akrai," *NSc* 24, 1970, p. 470, fig. 43.

found in 1977.²⁹ **40** is surely an imitation of **1**. The *tabella ansata* is the most common shape of potter's stamp found on Corinthian pottery.

Imitations of Eastern Sigillata A are the most numerous imitations of imported sigillata in the deposit, and more forms are present among the imitations than in the ware itself. The variety of "Hellenistic" forms side by side with "early Roman" types reflects the appearance of similar forms in Eastern Sigillata A and reinforces the suggestion that all were in use, and made, at one time. The imitations of Samaria form **22**, **48** and **49**, parallel the late Augustan examples of the form in group F in the Athenian Agora.³⁰ Of particular interest is **50** because the local imitations of relief lamps display the same fabric and glaze.

A large quantity of the locally made glazed fragments in the deposit belong to pitchers of various shapes. **54** is probably an imitation of Eastern Sigillata A and **57** may be as well. The painted decoration on the shoulder of **56** places it at the end of the Hellenistic tradition of painted lagynoi and West Slope ware. One locally made gray-ware pitcher is listed also with the other gray ware (**38/59**). The only other large group of pitchers in the floor deposit, cream-slipped and polished **61** and **62**, may also include some local examples (below, p. 171).

The local fabric which was used for the imitations of early Roman terra sigillata and for much Roman table and coarse ware at Corinth was identified by comparison with local pottery of Classical and Hellenistic date. This identification was later confirmed by chemical analysis (see Appendix). In range of color and hardness the Greek and Roman fabrics are the same, but the Roman paste is normally grittier in texture. Corinthian fabric is frequently soft, reddish yellow (5YR 7/6–7.5YR 7/6) with lime, other white, red, and less abundant black inclusions, but may range lighter to a very pale brown (10YR 8/3, 10YR 8/4); lighter-colored fabric is frequently harder. The color of the glaze³¹ is tied to the color of the fabric: red (2.5YR 4/8) on reddish yellow fabric, black on pink or very pale brown fabric. Around its circumference a single piece often ranges from one extreme of fabric and glaze to the other. It is also common for the core to be redder than the surface or for sections of the vessel not exposed to the kiln atmosphere, such as the interior of a jar or of a base ring, to be redder.

Another, more durable and brittle, fabric was employed by Corinthian potters for vessels which would receive harder use such as the series of cooking pots catalogued above and, in a finer version, for imitations of thin-walled wares and the wheelmade lamps of Broneer type XVI. It is hard, loosely compacted, and red (2.5YR 5/6) with small-to-medium opaque white inclusions oxidized orange on the surface; the surface or occasionally the whole pot may be fired gray. The surfaces of many of the smaller

²⁹C-1977-129; unfortunately the central potter's stamp is missing.

³⁰For the date of group F see Hayes, *Hesperia* 42, 1973, p. 425.

³¹This glaze has been referred to as slip or paint (Hayes, *Hesperia* 42, 1973, p. 463). At least in some instances it was applied in the same ways as to sigillata; the difference appears to be one of firing temperature or composition rather than technique. See also *Agora* V, p. 5.

cooking vessels in the floor deposit have a purplish, iridescent sheen, suggesting that they were fired nearly to the point of vitrification.

Besides their fabric the local cooking pots have an inward thickened, inward beveled lip, which distinguishes them, for example, from Corinthian Hellenistic vessels of the same shapes and from the Attic series in which the lip is outward thickened with a narrower bevel; both handles of two-handled vessels were usually set horizontally. **71**, one of the few stew pots in the deposit, is perhaps the largest found at Corinth. At least two of the casseroles (**66** and **67**) are also local as are the lids, which do not fit either of them very well (**69** and **70**). It is noteworthy that the only cooking vessels in this deposit which can be definitely classed as local have Hellenistic, i.e. Greek, antecedents. On the other hand, not all of the vessels with such antecedents need be local (**65** and **68**).

The variety of imported cooking vessels is surprising. Most prominent are the three baking dishes of Pompeian-red ware which are typical of the ware as it is found in Corinth. The profiles are comparable to those published by Hayes from the South Stoa³² rather than to the selections of forms shown by Goudineau³³ and Peacock³⁴ in their studies of the ware found in Bolsena and Britain respectively. **73** is similar in fabric and in the method of finishing the exterior to cooking pans of Italian "orlo bifido" type (as **76** here) and may be of Peacock's fabric 1. **74** is similar but its surface is very much more micaceous while the slip is less micaceous as well as more matt; it may be of fabric 2. The third, and smallest, plate (**75**) is clearly an imitation: the fabric is coarser and black at the core, the slip is very carelessly burnished and badly blackened, and all surfaces have suffered severely from use in the fire; the fabric and method of finishing the exterior closely resemble those of some of the frying pans and other cooking pans common in Corinth, Athens and elsewhere in slightly later contexts (see below).

Aside from the Pompeian-red-ware baking dishes and the local vessels described above there are vessels of several other fabrics present in the deposit; their specific sources are unknown at this time.³⁵ Frying pans (**77**), which are common at Corinth, are found also in Athens, Cosa and Sybaris in 1st-century (after Christ) contexts;³⁶ their interiors frequently show signs of burnishing on top of a heavy soot or charcoal deposit; was this a method of cleaning them? The collar rim, piecrust, and shoulder decoration of **79** seem to be related to western or European cooking vessels rather than to Aegean/Greek types,³⁷ and lids with a black-slipped rim, such as **78**, have a very wide

³² *Hesperia* 42, 1973, nos. 171–174, pp. 458–459, pl. 88.

³³ C. Goudineau, "Note sur la céramique à engobe interne rouge-pompéien (Pompejanisch-roten Platten)," *Mélanges de l'École française de Rome* 82, 1970, pp. 159–186.

³⁴ D. P. S. Peacock, "Pompeian Red Ware," in Peacock, ed., *Pottery and Early Commerce, Characterization and Trade in Roman and Later Ceramics*, London 1977, pp. 147–162, fig. 3.

³⁵ The western parallels given in the Catalogue are only suggestions based on the published profiles.

³⁶ Another fragment of such a frying pan found in 1974 has raised letters across the underside of the flat bottom indicating that the class is moldmade. Ordinarily the bottoms have suffered too much from the heat of the cooking fire for such inscriptions to be preserved.

³⁷ Cf. L. M. Saracino, "Russi," *NSc* 31, 1977, nos. 340 and 1360, pp. 58 and 132, fig. 79.

distribution in the western Mediterranean in late Republican and early Imperial times. Small and large pitchers with trefoil mouths (**82**) are not uncommon in Corinth at this time; their source must be some place with which Corinth had regular contact.

Some of the vessels classed here as thin-walled pottery were apparently also used over the fire (**90, 91**); the distinction made in the Catalogue is on the basis of shape rather than function. The range of shapes in the floor deposit is limited compared to what is found in Italy at this time, but there is no reason to doubt the Italian origin of the majority of the vessels, although they apparently come from different centers; only for **94** and the four similar bases in the context pottery is there a possibility that one or more may be local imitations. Hemispherical bowls (**85, 86**) are found at Haltern and continue to appear throughout the Julio-Claudian period. Vessels with the fine fabric and smooth finish of the beaker **83** and skyphos **84** are usually dated Augustan, if not earlier, but the tankard **87** is probably Tiberian and the small jugs (**88, 89**) are found in other Tiberian contexts in Corinth.³⁸

There remain a few miscellaneous vessels and types which deserve some comment. Koan/Knidian cups (**95–97**) are frequent in early Roman deposits at Corinth, but are found only sporadically before the establishment of the Roman colony. The cream- or pink-slipped and polished globular pitchers (**61, 62**), of which there were six in the floor deposit, are early 1st-century (after Christ) descendants of the similarly slipped and painted Hellenistic lagynoi; they are well represented at Corinth and Sikyon³⁹ and some may be locally made.⁴⁰ Fusiform (**98**) and bulbous (**99, 100**) unguentaria are approximately equally represented in the floor deposit; bulbous unguentaria like **99** with a globular body and simple everted rim are common in Greece and Italy, but **100** with a different fabric and nearly biconical body belongs to a rarer type. Wide-mouth jars (**105**) are found in Athens and Corinth in the first three centuries after Christ; they are apparently imports. Except for **102**, which may be a table amphora, the amphoras from the floor deposit were fractional Koans like **101**; there were three to five present.

The lamps from the Corinth deposit present a slightly different picture than does the western sigillata. They fall into two groups; lamps of Roman type with discus decoration in relief are in the majority and, in general, can be more closely dated than the lamps in the Hellenistic tradition, the second group.

117 is the only fragment from the deposit which has a distinct shoulder between the wall and the rings around the edge of the discus. The appearance and gradual development of this shoulder have been pointed out as a chronological indicator during the 1st century after Christ,⁴¹ and the lack of such a shoulder indicates a date early in the century. A difference in proportions between globule lamps, bird's-head lamps and volute lamps, all of which were present at Haltern, is also a chronological indicator. Bird's-head lamps are not found in Corinth. Globule lamps, of either Italian or Attic

³⁸CP-192 is from a Tiberian well fill below the core of the Julian Basilica.

³⁹On display in the museum in 1975.

⁴⁰Note also the presence of a bowl in the imported version of this ware: **60**.

⁴¹Loeschcke, *Lampen*, fig. 2 and *passim*.

manufacture, are not present in this deposit. The volute lamps lack the channel between the discus and the nozzle (Halter type 35b), a form which is also lacking at Vindonissa and which Loeschcke therefore believed to be earlier and characteristic of the Haltern period. The two Roman types mainly represented in the deposit, that with handle shield and rounded volute nozzle (**113**, **114**) and that with triangular nozzle and shoulder volutes (**115**, **116**), were both present in Tiberian groups at Vindonissa, and **114** and **119** have specific parallels there. On this basis the date of the lamps in the Corinth deposit should be as late as, or later than, the foundation of Vindonissa in A.D. 16/20.

The problem of the source of these lamps in Corinth needs to be reconsidered. Throughout the 1st century they occur in approximately equal quantities with Broneer type XVI, the Corinthian wheelmade lamp. This ratio is comparable to that between the imported and locally made fine wares in the floor deposit (above, p. 168) and might confirm Broneer's conclusion that lamps of his types XXI and XXII in Corinth are imported, mostly from Italy. These lamps commonly display a fabric which is fine to slightly gritty, with voids rather than dark inclusions, soft more often than hard, and white or cream in color;⁴² the glaze has flaked off and remains often only in the pinpoint irregularities of the surface where it is yellowish red, or around the edges of the relief where it is thicker and a metallic lead gray; the lamps were made in plaster molds.⁴³ This fabric is identical with that of the cup **50**, identified as a Corinthian imitation of Eastern Sigillata A, and very similar to that of **41** and **48**, which fall in the local group according to tests (see Appendix). Among the Italian lamps from the Agora in Athens only a few are of this fabric; the majority display a distinctly different fabric.⁴⁴ Unfortunately the properties of South Italian and Corinthian lamps are not felt to be readily distinguishable even by laboratory analysis. Therefore it remains only a probability that the lamps designated in the Catalogue were made in Corinth. Their source has no bearing on the chronology discussed above.

A substantial minority of the lamps are in the Hellenistic rather than the Roman tradition. **111**, imported from Athens or Knidos, although it lacks any traces of relief decoration on the shoulder, is a type which was popular during the 2nd and 1st centuries B.C.; its appearance in this deposit is therefore anomalous but its condition indicates that it was used together with the rest of the material. The fabric of the "Ephesos type" lamp **112** is from an unknown source; it is very light both in weight and in color.⁴⁵ The locally made lamps of Broneer type XVI from this deposit are of

⁴²The fabric of the individual lamps is described in detail in the Catalogue.

⁴³The best description of plaster molds and how to recognize their use from the lamps is found in D. M. Bailey, *A Catalogue of the Lamps in the British Museum*, I, *Greek, Hellenistic and Early Roman Pottery Lamps*, London 1975, pp. 4–5.

⁴⁴I wish to thank Judith (Perlzweig) Binder for looking at and discussing with me the lamps she published in *The Athenian Agora*, VII, *Lamps of the Roman Period*, Princeton 1961.

⁴⁵Clay molds for lamps of this type have been found in Corinth, see C. Roebuck, *Corinth*, XIV, *The Asclepieion and Lerna*, Princeton 1951, MF-9014 – MF-9016, pp. 81, 90, pls. 19:1, 21:4, but **112** is not comparable to Corinthian "gray ware" such as **38**. It is of interest that in this case technique appears to

particular interest. One, **107**, is moldmade, of the well-known Corinthian buff clay with black glaze; its presence here shows that moldmade lamps of this type belong to the period of the Roman colony rather than that previous to the Mummian destruction as Broneer suggested.⁴⁶ A few wheelmade lamps of type XVI, such as **108** and *Corinth* IV, ii, no. 196, may be distinguished by their fabric and profile; they are not Corinthian, but the fabric is found also in early Roman pottery here and is probably Peloponnesian.⁴⁷ The remainder of the type XVI lamps from the floor deposit are of the common variant of unglazed "coarse" fabric. This fabric is in fact usually fine with tiny or small white inclusions; it is similar to some thin-walled pieces as well as to the local cooking fabric (except in size of inclusions) and is normally red, reddish brown or brownish gray in color.

All of the glass from the floor deposit⁴⁸ is colored, although **123** is of the bluish green color common in later 1st-century contexts. Except for **126**, which has parallels only in the West, it is not possible to say whether these fragments are of western or eastern origin. Vessels similar to all except **124** have been found previously in Corinth and bowls such as **122**, **123** and **125** are common here; for most of the types the floor deposit provides a more precise date than was previously available. One fragment like **124** was found at Haltern⁴⁹ and others from Vindonissa were dated to the Tiberian-Claudian period; a few such pieces also come from Pompeii. The comparative material cited from Ostia indicates only that the forms are long-lived, as a date in the second half of the 1st century is not possible for the floor deposit. Despite the lack of parallels elsewhere for **127**, its thinness and technique suggest it is one of the newer pieces in the deposit.

Egyptian imports are generally rare in Roman Corinth and **128**, the shoulder of a faïence amphora, is the only one in this deposit; this seems to be the first example from a controlled excavation. The floor deposit also provides a welcome *terminus ante quem* for the activity of the Corinthian maker of the Latin-stamped tile **132**.

CONCLUSIONS

If the floor deposit had been found in a house, one would assume that it represents the complement of vessels in a contemporary kitchen: individual plates for eating as well as large platters for serving, drinking cups, and cooking pots and pans to be used on the open fire and in the oven, as well as other vessels useful in the preparation of

have followed form: lamps of the "Ephesos type" were made and copied in clay molds, of the Italian types in plaster.

⁴⁶The moldmade lamps of this type published in *Corinth* IV, ii, nos. 198–201, were found with pottery and coins of the 1st century after Christ, rather than in pre-Roman strata as Broneer thought. Excavators at Corinth currently believe that all type XVI lamps found in Corinth belong to the time of the Roman colony.

⁴⁷To this group probably also belong L 4120 and L-72-17 referred to by O. Broneer, *Isthmia*, III, *Terracotta Lamps*, Princeton 1977, pp. 25, 26–27, pl. 40:e, f.

⁴⁸Here I am considering *only* lot 1976–98.

⁴⁹"Haltern," p. 152.

food. But the early Roman Cellar Building is not a house; its position, size, and material indicate that it was almost certainly a public building, or at least a building open to the public. And the pottery shows this, too: there is an overabundance of serving platters in comparison to individual plates, many of the drinking vessels are glass, and large storage vessels including full-size amphoras are conspicuously absent.⁵⁰ A building open to the public with provisions for serving food and drink is most likely to be a restaurant or tavern, and room 2 in which the floor-deposit material was stored and found was probably its pantry. No answer to the questions of whether or not the building had any additional functions or why it is one of the earliest Roman buildings in the Forum area at Corinth can be given on the basis of the material discussed here; perhaps further excavation in the southern part of the building may provide a solution.

The most striking feature of the floor deposit is the number of shapes and types present in a relatively small group of pottery. Only in Eastern Sigillata A, local Corinthian ware, and possibly the lamps do imitations of western fabrics appear. The Eastern Sigillata A pieces **17**, **22**, and **23**, close imitations of their Arretine prototypes, and the five more traditional vessels in the Catalogue suggest that imitation of western prototypes was a recent phenomenon in this ware. Local Corinthian potters were imitating both Arretine and Eastern Sigillata A forms and techniques, as well as Italian lamps, but the forms they were imitating are those current in this deposit; since no imitations of earlier shapes are present it is possible that the Roman Corinthian pottery industry was still in its infancy, perhaps no more than a quarter of a century old at the time of the earthquake which destroyed the pottery. The evidence of the deposit therefore suggests that it was in the late Augustan period at the earliest that western products were exported eastward in sufficient quantity to stimulate imitation in the eastern fabrics.

The strategic position of the Roman colony at Corinth in the economy of the early 1st century after Christ emerges clearly from a study of the deposit. Although single vessels from other cities of the Greek mainland may have been mistakenly included in other categories, it is clear that no substantial body of such material exists and that Corinth was not a nexus of mainland Greek (Achaean) trade at this time. Its importance, and presumably its wealth, lay in the link between east and west furnished by the Isthmus. An east-west route across the northern Mediterranean is reflected in the sources of the pottery and other finds in the floor deposit: Syria, southwestern Asia Minor and adjacent islands, Corinth, probably southern Italy or Sicily, and Etruria or, more likely, Rome. That this route remained of crucial importance later in the 1st century is shown by Nero's abortive attempt to cut a canal across the Isthmus.

The excavation of the early Roman Cellar Building revealed that it was damaged by an earthquake and repaired. The contents of the floor deposit of room 2 show that this earthquake occurred in the early years of Tiberius' principate. In A.D. 23 Tiberius requested from the Senate a three-year remission of the tribute of Aegium, a town

⁵⁰Provision for large storage vessels was found in the cellar: Williams, *Hesperia* 46, 1977, p. 60 and fig. 5.

some distance west of Corinth on the north coast of the Peloponnesos, because it had suffered damage by an earthquake.⁵¹ Such remissions usually imply severe damage, and it is likely that the earthquake was an unusually strong one and that neighboring towns were also damaged to a lesser extent. The coincidence of an early Tiberian earthquake at Corinth attested by the archaeological evidence and a historical earthquake centered on Aegium in A.D. 22/23 suggests that in fact the two are identical and that the early Roman Cellar Building at Corinth was damaged in the earthquake of A.D. 22/23. Thus the deposit at Corinth joins the deposits at Haltern and Pompeii as one of the handful of deposits of the 1st century after Christ with secure *termini ante quem*.

If accepted, this conclusion may have wider implications for Italian sigillata, which has been thought to evolve very rapidly. For despite the 14-year difference in date between Haltern and Corinth the western sigillata is virtually identical. This casts a new light on the Haltern pottery, which would now all be regarded as forming a single non-evolving unit; for instance, at least in A.D. 9, if not necessarily as late as A.D. 22/23, plates of Haltern type 1 (service I) were still being used, and presumably still being made, alongside plates of Haltern type 2 (service II). As a result the evidence from other sites would invite reconsideration; strata from a number of sites such as Bolsena would not need compression into a decade or so in the late Augustan period but, with a slower rate of evolution, may encompass at least the earlier part of the Tiberian period as well. On the other hand, the difference between the Arretine from the Corinth deposit and the provincial Ateius sigillata in the earlier group at Vindonissa (above, footnote 10) is striking and must be explained; it is possible that the introduction of the *planta pedis* stamp and a preference for service II distinguish the work of the provincial Ateius factory from the contemporary products of Arezzo.

KATHLEEN SLANE WRIGHT

BRYN MAWR COLLEGE

Appendix

Of the imported sigillata the fabric which is oftenest close in appearance to Corinthian is Eastern Sigillata A; sherds are often difficult to tell apart, pieces with whole profiles being more easily distinguished. When an opportunity arose for the analysis of some Roman pottery from Corinth twelve specimens were selected as follows: 1) Four pieces of Eastern Sigillata A were chosen, 17 (C-1976-21 d), 23 (C-1976-31), C-1976-183, C-60-325; 2) four local pieces including one piece of utility pottery, C-60-214, C-60-349, C-74-133, C-75-138; 3) four other local pieces which had

⁵¹Tacitus, *Annals* IV.13. Since the request was submitted to the Senate in A.D. 23, the earthquake presumably took place early in 23 or during the previous year.

originally been identified as Eastern Sigillata A by myself or someone else, **41** (C-1976-35), **44** (C-1976-30), **48** (C-1976-37), C-60-200. We hoped that groups 1 and 2 would serve as controls against which to measure group 3 and that, if group 3 proved to be local, groups 2 and 3 together would establish a range for Corinthian Roman fine (and utility) pottery.

The following report was received from Richard Jones of the Fitch Laboratory, British School at Athens.

Report on the analyses of Roman Pottery from Corinth

Aims

1. To compare the compositions of the twelve sherds.
2. To determine whether the compositions can be accommodated within the known composition characteristics of Corinth.

Method

The samples were analyzed by optical emission spectroscopy using the standard technique. The percentage concentration of nine elements in their oxide form was determined.

Results

The compositions of the samples are given in the Table. In addition, the concentration ranges associated with an 80% level of confidence are given for 1) Corinth coarse-ware pottery (15 samples) of the 4th century B.C. and 2) fine Mycenaean pottery of the LH I/II period from Korakou (19 samples).

Comments

Samples 1, 3, 4, 5, 6, 8, 10 and 11 fit quite satisfactorily into the Corinth ranges, and so may be considered to be local products. Samples 2, 7, 9 and 12 fall outside the Corinth ranges; their Mg, Cr and Ni contents, in particular, are significantly higher than those in Corinthian pottery. These samples must be taken to be imports. It is noted that, for several of the samples assigned to Corinth, one or two elements do in fact fall outside the Corinth ranges; for example, sample 1 has higher than average Mg, sample 3 has low Fe and sample 6 has high Ca. Bearing in mind, however, that 1) the Corinth control groups are of a different period from that of the present samples under investigation and 2) that the present samples are fine wares in contrast to the 4th-century B.C. coarse ware, these discrepancies should be tolerated. Calcium, for example, existing as free calcite in the clay, and as part of the clay structure, does vary naturally in amount in pottery and often to a considerable extent. Fortunately the compositions of samples 2, 7, 9 and 12 diverge greatly from the general Corinth composition, so that their assignment as imports may be held with confidence.

R. E. JONES

FITCH LABORATORY
BRITISH SCHOOL AT ATHENS
MARCH 1977

Corinth, Roman pottery

Sample	Percentage element in oxide form:								
	Al	Mg	Fe	Ti	Mn	Cr	Ca	Na	Ni
1. C-60-214	15.5	4.6	6.4	0.62	0.119	0.027	22.5	0.86	0.023
2. C-60-325	21.9	6.8	11.5	1.15	0.081	0.059	15.2	2.75	0.046
3. C-60-349	14.2	2.4	5.8	0.52	0.068	0.023	16.1	1.2	0.030
4. C-60-200	18.1	2.45	7.3	0.81	0.070	0.034	13.2	3.0	0.020
5. C-74-133	15.5	1.6	6.3	0.49	0.069	0.041	14.8	0.94	0.021
6. C-75-138	20.5	2.45	7.4	0.64	0.084	0.040	25.0	1.5	0.028
7. C-1976-21d	16.0	7.7	12.0	0.90	0.096	0.050	18.2	2.0	0.056
8. C-1976-30	23.1	3.1	7.8	0.90	0.108	0.028	19.4	2.6	0.0205
9. C-1976-31	18.1	6.1	8.7	0.96	0.047	0.044	14.1	2.05	0.033
10. C-1976-35	18.5	2.3	6.6	0.63	0.074	0.024	21.0	1.37	0.021
11. C-1976-37	21.2	2.8	7.3	0.70	0.085	0.031	19.0	1.15	0.025
12. C-1976-183	21.8	8.6	10.4	1.2	0.093	0.061	21.4	2.55	0.048

350 B.C. Corinth

Coarseware

80% ranges	16.2-24.0	2.6-4.2	7.7-10.7	0.59-0.85	0.076-0.11	0.025-0.043	11.15-18.3	0.54-0.94	0.020-0.058
------------	-----------	---------	----------	-----------	------------	-------------	------------	-----------	-------------

LH I/II Korakou

80% ranges	13.9-23.3	2.3-4.3	7.04-9.96	0.64-0.90	0.069-0.115	0.023-0.047	9.7-19.7	0.70-2.32	0.016-0.036
------------	-----------	---------	-----------	-----------	-------------	-------------	----------	-----------	-------------



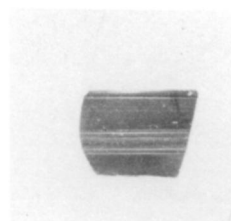
1



3



13



14



4



view A



view B

17



21

Scale 1:3 except 3 and 4, 1:1

Arretine and Eastern Sigillata A pottery

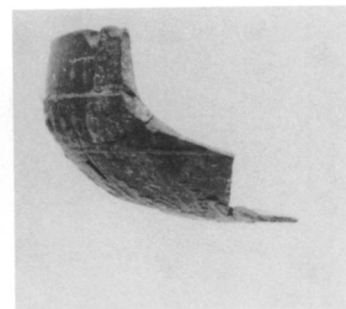
KATHLEEN S. WRIGHT: A TIBERIAN POTTERY DEPOSIT FROM CORINTH



31

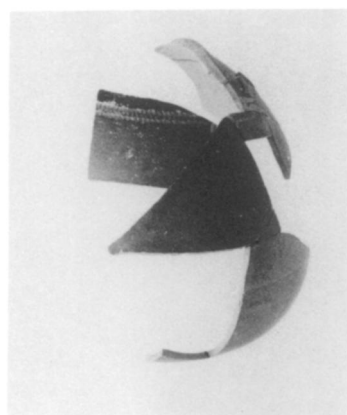


view A



view B

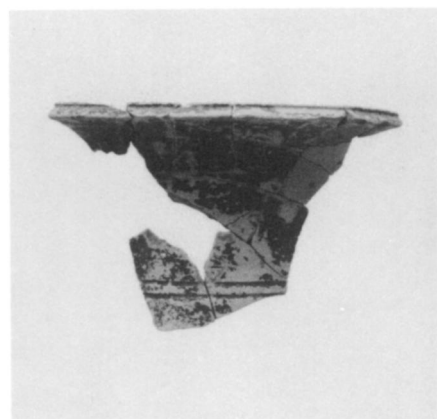
36



37



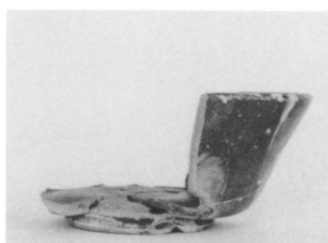
39



40



47



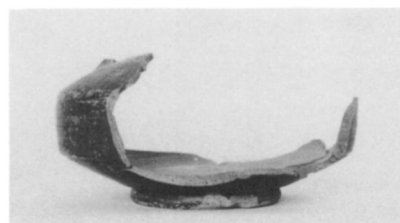
48



50



53

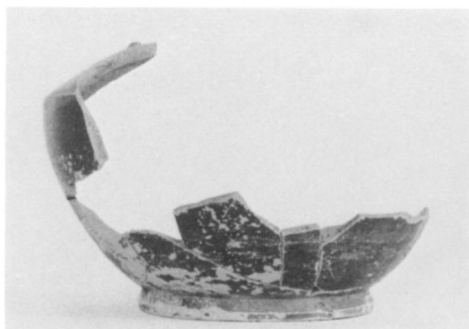


54

Scale 1:3 except 39, 1:1

Gray wares and local fine ware

KATHLEEN S. WRIGHT: A TIBERIAN POTTERY DEPOSIT FROM CORINTH

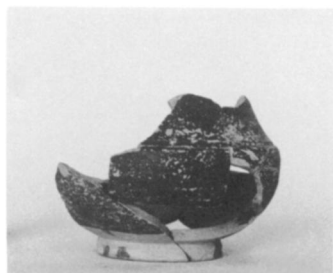


view A



view B

56



57



58



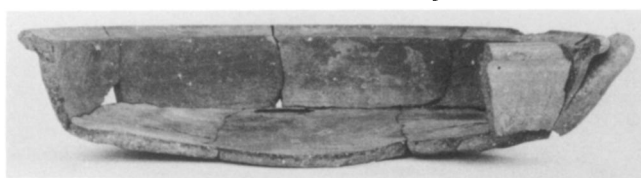
59



63



64



65



66



71

scale 1:3
except 71, 1:5

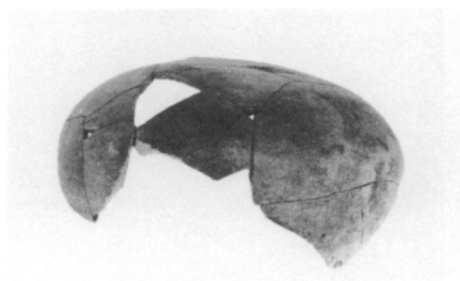
Local fine and cooking wares



77



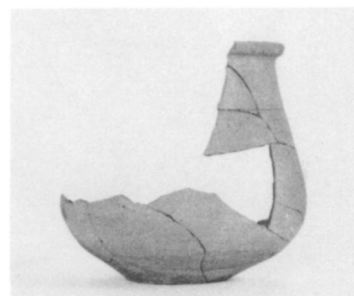
79



81



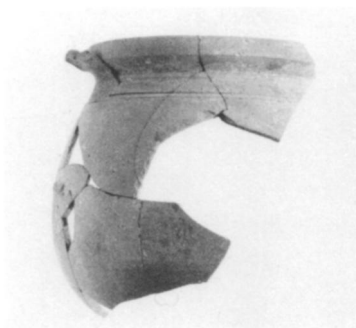
85



89



90



91



92



93



94

Scale 1:3

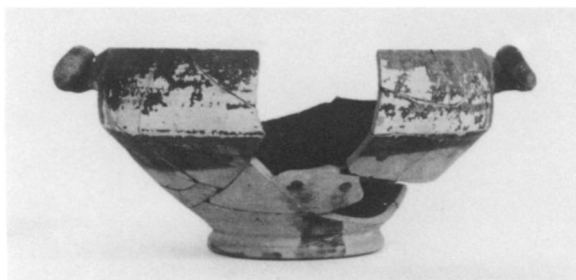
Imported cooking wares and thin-walled wares



95



96



97



98



99



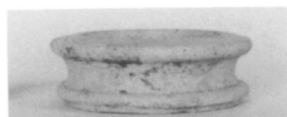
102



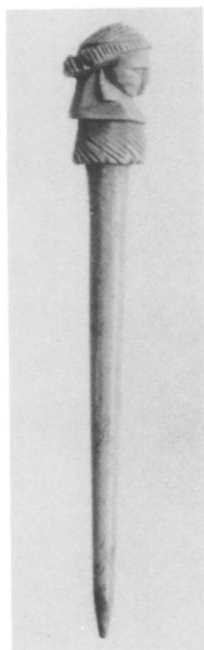
101



105



106



129



130



132

Scale 1:3 except 129, 130, 1:1

Koan cups, miscellaneous imported pottery and small finds



107



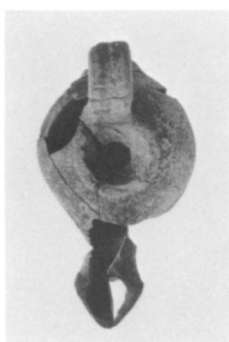
108



109



110



111



112



115



116



113



114



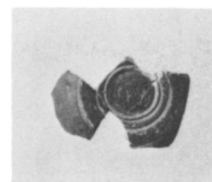
118



119



120



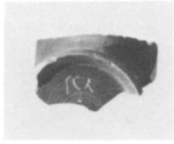
121

Scale 1:3

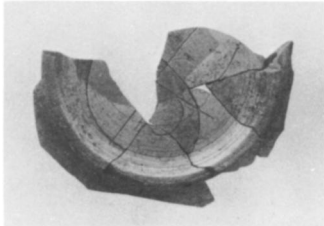
Lamps

KATHLEEN S. WRIGHT: A TIBERIAN POTTERY DEPOSIT FROM CORINTH

PLATE 34



14



62

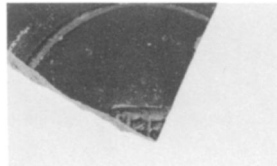


41

Graffiti. Scale 1:3



5



15



16



25



27



41



43

Stamps. Scale 1:1