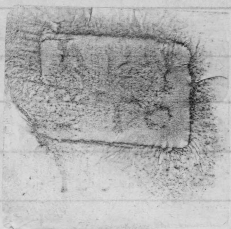
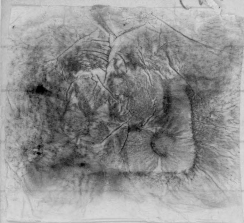


ΑΡΙΣΤΟ(

(R 93A)

R



Bonachi - 29.X.52, sheet 3,14

'Αρι
στο(

"wide thick early
curved"

10

Alexandria, Benachi 29.X.52, sheet 3, 14 ^{AD}

Pulch Wank, KBW 5, whole amph
of Kyren - type (like those of law)
(not quite same die)

Kaunos, Asia Minor, Turkish exc. no
011308 TT VI. (see letter of 17.X.90
from B. Schmaltz) V.G no 55