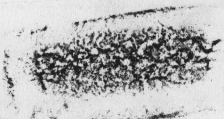


ΚΡΟΙΣΟΣ

R


See also under miscel.  
file

  
Jerusalem

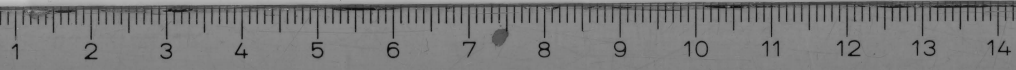
284

RG 48

Κροίσου

  
Tanaïs 9512724

1a



Jerusalem, (Jmp A 2.3 no 284), VG no 48, see  
letter of 4.XI.94 from K. Prag and letter  
of 12.XI.95 from D. Snow

Tanais inv. 95/2724 "rund form des Henkes in der  
Periode I oder frühen Per. II" according<sup>to</sup> Dr.  
Jöhrens