

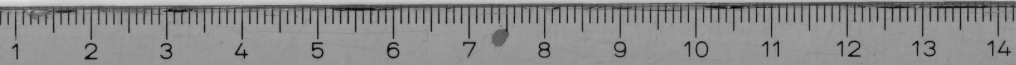
ΚΩΚΟΣ

R

ΚΩΚΟΥ

late Rh.

la



Delos : seen 12.XI.50, case 12 (then was
another one in another case)

BCH 32, 32

Delos - TD 2657, 3276



29

30

31

32

33

34

35

36

37

38

39

189.26

TD 3276

1d

29 30 31 32 33 34 35 36 37 38 39