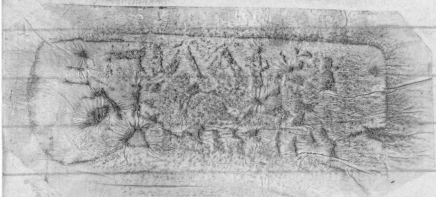


ΛΑΦΕΙΔΗΣ, ep.

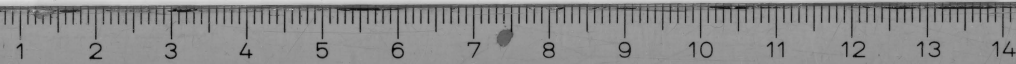
ΑΡΤ. Ρ



Alex. Benachi, 28.IV.54, N<sup>o</sup> 462

Ἐπί Λαφεί  
δεύς Ἄρ  
ταριτίου

110



Rhodes : ΜΣ, R 115

AD

Alex: Benachn 28. IV. 54, No 462 etc

Lindos: N. 284, 4

Pella: A 2248

Cyprus, Oikia Διονύσου: G 689 (OΔ 1051)

Palestine: Asdod, Dothan 1971, p 47, fig 9, 20

116