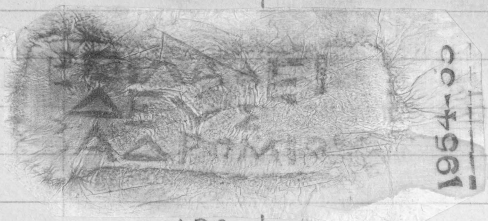


ΛΑΦΕΙΔΗΣ, ερ.

ΒΑΔ. Ρ

248. ΕΠΙΛΑΦΕΙ  
ΔΕΥΞ  
ΒΑΔΡΟΜΙΟΥ

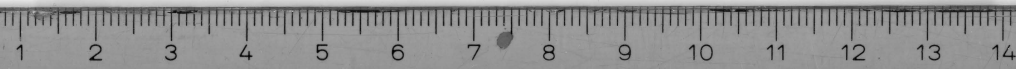
Her. m. 13, 248



ABC

Ἐπί Λαφεί-  
δευς  
Βαδρονίου

19a



Herm. 13, 248

Alexandria Benachi 1954-55

Lindos: N. 284, 5

AD

196

