



THE AMERICAN SCHOOL OF CLASSICAL STUDIES AT ATHENS  
ONE HUNDRED AND THIRTIETH / ONE HUNDRED AND THIRTY-FIRST ANNUAL REPORTS  
2010-2011 AND 2011-2012







Excavators at work in the Athenian Agora

# THE AMERICAN SCHOOL OF CLASSICAL STUDIES AT ATHENS ONE HUNDRED AND THIRTIETH / ONE HUNDRED AND THIRTY-FIRST ANNUAL REPORTS, 2010–2011 AND 2011–2012

MESSAGE FROM THE BOARD PRESIDENT AND MANAGING COMMITTEE CHAIR . . . . .	3
I30TH ANNIVERSARY HIGHLIGHTS . . . . .	4
PROGRAMS . . . . .	6
ARCHAEOLOGICAL FIELDWORK . . . . .	10
RESEARCH . . . . .	14
PUBLICATION . . . . .	18
OUTREACH . . . . .	20
ASCSA LECTURES AND CONFERENCES . . . . .	22
IN MEMORIAM: DOREEN CANADAY SPITZER . . . . .	24
TRUSTEES AND OVERSEERS . . . . .	25
STAFF OF THE SCHOOL . . . . .	26
MEMBERS OF THE SCHOOL . . . . .	28
COOPERATING INSTITUTIONS AND THEIR REPRESENTATIVES . . . . .	31
DONORS . . . . .	34
EDWARD CAPPS SOCIETY . . . . .	36
FINANCIAL REPORTS . . . . .	38







## MESSAGE FROM THE BOARD PRESIDENT AND MANAGING COMMITTEE CHAIR

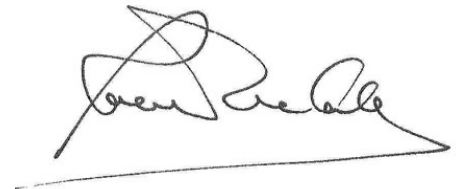
**O**n behalf of the American School of Classical Studies at Athens, we are pleased to introduce this report of the School's operations during its two most recent fiscal/academic years.

The world has changed since the American School of Classical Studies at Athens was established in 1881, and the School has changed with it. Transcending its original mandate—to foster the study of Greek thought and life and to enhance the education and experience of scholars seeking to become teachers of Greek—today's American School is a vibrant, engaged institution that provides unparalleled resources for the advanced study of all aspects of Greek culture, from antiquity to modern times. It also contributes considerably to the dissemination of information about Greek history and archaeology to an ever more diverse audience, both through its activities on Greek soil and through expanding technological means.

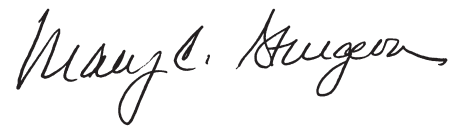
Decades of thoughtful stewardship, visionary leadership, and steadfast support shaped the School's development into the preeminent center for the study of the Greek world from antiquity to the present. The celebration during this reporting period of the 130th anniversary of its founding provided an opportunity for everyone in the ASCSA community to reflect on the School's origins and evolution and to look ahead to the challenges and opportunities to come. As we move past our 131st year, we are grateful to have in place an infrastructure that will enable us to continue to evolve and to maintain our relevance to the multiple constituencies we serve.

None of our achievements would be possible without the dedication of the School's Director, faculty, and staff; the commitment of those who come forward to serve as members of the various administrative bodies; the guidance and support of our Trustees; the loyalty of the School's many friends

and colleagues; and the generosity of our donors. Thanks to their contributions, the ASCSA goes forward as a vibrant institution dedicated to its mission to advance knowledge of Greece and other areas of the classical world through scholarship, excavation, publication, and outreach.



*Robert A. McCabe*  
*President, Board of Trustees*



*Mary C. Sturgeon*  
*Chair, ASCSA Managing Committee*

**The Academic Program members in Delphi. The School organizes many student trips a year to significant sites in Greece and the Mediterranean.**

## 130<sup>TH</sup> ANNIVERSARY OF THE SCHOOL

**T**he School celebrated the 130th anniversary of its founding. Festivities commemorating the occasion took place in June 2011 and featured a number of special anniversary events, including awards to four great Philhellenes, the School's inaugural alumni award, an alumni trip, and an exhibition of material from the School Archives highlighting the history of the School's academic program.

During the anniversary celebrations, the School held an award ceremony to honor several individuals for their many years of service on behalf of the School and Greek culture.

① Alan Boegehold was the recipient of the School's inaugural Aristeia Award, established to honor alumni/ae who have provided exceptional service to the School and have contributed in extraordinary ways to the School's mission. ② Former School Director James D. Muhly accepts a Philhellene Award on behalf of awardee Malcolm H. Wiener; the other Philhellene Award winners were Charles K. Williams, II, David W. Packard, and Lloyd E. Cotsen.



③ School Director Jack L. Davis delivers the keynote address, "The ASCSA, Then and Now."

④ Natalia Vogeikoff-Brogan, curator of the 130th anniversary exhibition, shows items on display to U.S. Ambassador Daniel Smith and his wife, and Nikolettta Valakou of the Greek Ministry of Culture. The exhibition featured photographs, documents, and memorabilia spanning the history of the program as well as a video installation streaming short film clips for each of the School's decades through 1970.





5 Following the events in Athens, a group of ASCSA alumni/ae, led by Mellon Professor Margaret M. Miles, embarked on the first-ever alumni/ae trip. In keeping with the spirit of traditional School trips, the alumni/ae trip included site reports, lively discussions, and visits to iconic sites throughout Greece. (Pictured at left: The travelers gathered at the famous Lion of Amphipolis, re-erected in 1936 by legendary archaeologist Oscar Broneer.)



6 Reception in the plaza in front of Cotsen Hall. Enjoying the festivities: 7 Chairman of the Gennadius Library Overseers Alexander E. Zagoreos, ASCSA Trustee Elizabeth Gebhard, and Overseer Anthony Lykiardopoulos; 8 Mrs. Matti Egon, Gennadius Library Director Maria Georgopoulou, and Sharon Stocker, wife of Director Jack L. Davis; 9 Managing Committee Chair Mary Sturgeon, President Emeritus James R. McCredie and wife Marian McCredie.





## PROGRAMS

Students get up close and personal with ancient sites. On the Academic Program's trip to Turkey, Regular Member Jess Lamont and Judy Barringer explore the remarkable carved figures at Adamkayalar.



Left: The Agora Excavations summer volunteer program trains participants in the basic techniques of excavation, including proper use of tools; cleaning and investigating stratigraphy; delicate cleaning of artifacts in the ground; sifting and flotation; basic conservation of objects; and the keeping of excavation records. Here, Lisa Mays uncovers animal bones.



*“Nowhere else have I felt a part of such a vibrant and stimulating academic community. From the alumni, visiting researchers, professors, and fellow students, the atmosphere has been one of warm collegiality and encouragement. I have benefited greatly from my interactions with other scholars of all ranks and stages in their careers, and look forward to continuing the discussions.”*

— MEGAN CAMPBELL (UNIVERSITY OF TORONTO),  
2010–11 THOMAS DAY SEYMOUR FELLOW

During 2010–11 and 2011–12, 35 graduate students took part in the School’s nine-month **Regular Program**, consisting of field trips to major archaeological sites of the Greek world; seminars presented by School faculty and staff; and training in archaeological techniques at the School’s excavations at Ancient Corinth. Also admitted to the School during this period were dozens of Student Associate Members (young scholars whose dissertation research necessitated their presence in Greece under the auspices of the School) and Senior Associate Members pursuing independent research (see *Appendix for a list of members and their areas of research*). These scholars both benefited from and enriched the vibrant educational environment of the ASCSA as they participated in portions of the School’s Regular Program and shared their own knowledge with

members of the School community.

Teaching and learning are year-round activities at the ASCSA, where two **Summer Sessions** took place in each of the two academic years covered by this report. Patterned after the Regular Program trips, these sessions introduce roughly 20 participants per group—undergraduates, high school teachers, graduate students, and college professors from a variety of fields—to relevant archaeological and historic sites and museums in Greece in an intensive six-week program of travel, lectures, and site reports. Students came away from the sessions with a solid understanding of the topography, built environment, and artistic, architectural, and political periods of Greek history.

Eleven students from the U.S., Europe, and Turkey participated in July 2011 in the Gennadius Library’s biennial **Byzantine Summer School Program**.

The program is designed to give attendees the opportunity to perfect their linguistic and paleographic knowledge of Medieval Greek through class instruction and visits to museums, libraries, archaeological sites, and Byzantine monuments around Athens.

In keeping with its teaching mission, the School continued to offer unparalleled opportunities for hands-on training in archaeological excavation and conservation techniques. The **Agora Excavations summer volunteer program** annually enabled more than 30 young excavators to participate in all aspects of archaeological fieldwork. The **Agora Conservation Laboratory’s summer internships** gave students an opportunity to treat freshly excavated archaeological finds and to learn about preventive and long-term care of archaeological collections.

Regular Member Debra Trusty (2010–11 Philip Lockhart Fellow) studying materials in the Corinth Museum.





*“Whether philologist or art historian or middle school teacher, none of these students will teach future courses in the sterile environment of pure text.”*

—2011 SUMMER SESSION II DIRECTOR GLENN R. BUGH



Above: Tim Gregory at Isthmia during the Summer Session program in 2011.



Far left: Chris Young and Mike Laughy sort through pottery sherds at the Agora Excavations.



Left: Megan O'Connor, a graduate student in the University of Toronto's Master of Museum Studies program, had a 12-week summer internship at the Agora Excavations as part of her coursework, enabling her to combine her interests in classical archaeology and collections management in a practical setting.





**Far left:** Agora Excavations Director John Camp shows Regular Members how Athenian history is reflected in the cuttings on the Monument of the Eponymous Heroes in the Agora.

**Left:** Mellon Professor Margie Miles led an optional trip to Egypt in the spring of 2012, undeterred by the nuisance of broken bones.



**Left:** In 2012, Director Jack Davis accepted on behalf of the ASCSA an award "For Excellence in Education" presented by Theodoros Pangalos, Deputy Prime Minister of Greece, at the American-Hellenic Chamber of Commerce's annual New Year's Reception on the occasion of its 80th anniversary. It was a proud moment for the School, with the U.S. Ambassador and Cultural Attaché and hundreds of prominent businesspeople in attendance.

**Above:** Students listen to a report by Melissa Eaby at Messene.



## ARCHAEOLOGICAL FIELDWORK



**Medieval pottery (ca. first quarter of the 13th c. A.D.) from a large pit south of the South Stoa at Ancient Corinth.**

**A**rchaeological fieldwork continued at the ASCSA's long-running excavations at Ancient Corinth and at the Athenian Agora. These projects continue to yield a broad array of information and material relevant to the research and publication interests of School Members, staff, and the scholarly community, as well as to provide opportunities for dozens of students to actively participate in archaeological and conservation work.

In addition to providing direct support for the excavation fieldwork, Corinth and Agora Excavations staff members performed a wide range of excavation- and research-related functions such as archiving, photography, site and material conservation, digitization, and drafting. They also provided critical support to scholars wishing to consult and study material from these important excavations.





**Left:** Frankish area south of Temple E undergoing conservation before opening the area to tourists.

**Below left:** Charles Williams, with Nancy Bookidis, presenting stratigraphy to Regular Members Emilia Oddo and Evelyn Adkins during the 2011 excavations at the Theater.

**Below:** Professor Michael MacKinnon and Regular Member William Flint Dibble studying the animal bones from the 2011 Theater excavations.

**Bottom:** Jasper intaglio inscribed with Artemis riding a deer found in the excavations south of the South Stoa in 2012.



In 2011 the *Emeritus* Director of the **Corinth Excavations**, Charles K. Williams, II (pictured above with *Emeritus* Co-Director Nancy Bookidis), returned to direct the excavations in the West Hall of the Theater at Corinth, in order to investigate how “vast quantities” of sheep and cattle bones cited decades ago by famed excavator Richard Stillwell related to activities in the theater. Mr. Williams uncovered more of the bone deposit, finding that it dated between

A.D. 450 and 600 and was unrelated to the theater *per se*. Well over a ton of bones were recovered, making it one of the largest deposits of its kind in the Mediterranean. Excavations also yielded a partially preserved, half-life-size female head in white marble; a complete head of a satyr, of high quality but badly weathered; and many architectural fragments that will aid in the proper restoration of the structures.







Excavations at the Athenian Agora in 2010 and 2011 uncovered material that ranged in date from the fifth century B.C. to the Frankish period. Left: a Late Roman lamp. Below left: A Hellenistic cistern excavated in 2010. Below: Joel Cook in the well from 2011 that yielded the large collection of pots (see front cover).



Below: Repairs and improvements to the Agora Excavations' Stoa of Attalos, funded under a European Economic Area grant, included conservation work on Agora statuary. Funding under the EEA grant is also designated for digitization initiatives in the Agora; these initiatives and similar efforts at the Corinth Excavations will enable the ASCSA to offer researchers and students the largest single data bank of digital archaeological resources in the Mediterranean world.



In recent excavation seasons, during which efforts in the **Athenian Agora** continued to focus on the area concentrated around the Stoa Poikile, wells proved to offer substantial evidence for dating the activities in this area. Directly behind and north of the Stoa, where little information yet existed about the use of the area before the Byzantine period, excavators in 2010 recovered a Hellenistic cistern, which

contained a mass of fragments of solidly painted wall plaster at a depth of just over a meter. The date of abandonment of the well was placed at the transition from the third to second century B.C. In 2011, a well located within the Stoa, uncovered several years previously, was excavated to a depth of nearly seven meters. The excavation recovered over 100 pots, many intact or nearly so, as well as two lamps. The assumption that

the well would prove to be associated with the Middle Byzantine walls found higher up was disproven by these finds: the pot assemblage dates to the fifth and sixth centuries A.D., and one of the lamps carries the name of a well-known fabricant whose workshop was active in the second half of the fourth through the mid-fifth centuries A.D.



Agora scholar Susan Rotroff, a longtime member of the ASCSA, was the recipient of the Archaeological Institute of America's highest award, its prestigious Gold Medal Award for Distinguished Archaeological Achievement, in 2011. Research on the Hellenistic period, especially the pottery, has been her lifelong focus; she is the author of three large volumes in the Agora publication series, which cover all the Hellenistic pottery from the site, as well as (with John Oakley) a *Hesperia* supplement on a large deposit of fifth-century pottery. Shown here measuring the capacity of a chytra (stewpot) from the rich Agora collection of utilitarian pottery, she is also pursuing research involving Hellenistic pottery from the Corinth Excavations.



Left: A mass of painted wall plaster fragments found in the cistern uncovered in 2010 undergoes analysis in the Agora's conservation lab.

The School continued to function as liaison between the Greek Archaeological Service and the ASCSA-affiliated institutions conducting excavations and survey projects on Greek soil, in keeping with its long-established role as legal sponsor of American archaeological research in Greece. Active projects conducting fieldwork under the auspices of the ASCSA and their director(s) included:

#### Excavations at Gournia

L. Vance Watrous, *SUNY-Buffalo*

#### Excavations at Ancient Nemea

Kim Shelton

*University of California, Berkeley*

#### Mochlos Excavation Project

Jeffrey Soles, *University of North Carolina at Greensboro*;

Costis Davaras

*Honorary Ephor of Antiquities, University of Athens [Emeritus]*

#### Mt. Lykaion Excavation and Survey Project

David Gilman Romano

*University of Pennsylvania, Museum of Archaeology and Anthropology*;

Mary E. Voyatzis, *University of Arizona*;

Michalis Petropoulos, *Honorary Ephor*; Anna Karapanagiotou, *39th Ephoreia of Prehistoric and Classical Antiquities, Tripolis*

#### Archaeological Reconnaissance of Uninvestigated Remains of Agriculture (AROURA) at Gla

Michael F. Lane, *University of Maryland, Baltimore County*;

Vassilios L. Aravantinos, *9th Ephorate of Prehistoric and Classical Antiquities, Thebes*

#### Excavations at Thebes

Kevin Daly and Stephanie Larson

*Bucknell University*; Vassilios L.

Aravantinos, *9th Ephorate of Prehistoric and Classical Antiquities, Thebes*

#### The Damnoni Excavation

Thomas F. Strasser, *Providence College*;

Eleni Panagopoulou, *Ephoria of Palaeoanthropology and Speleology of Southern Greece*



## RESEARCH

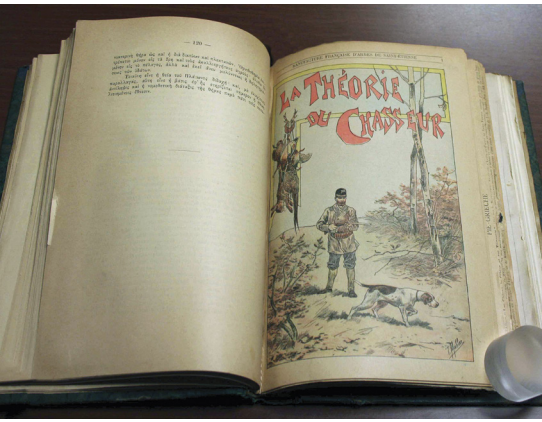
The School's libraries—the Gennadius (shown here) and the Blegen—continue to improve their content and services through acquisitions, resource sharing, and technology enhancements.



*I spent over a month working in the Blegen Archives, where I was able to examine all of the original excavation notebooks, drawings, and photographs associated with Carl Blegen and Marion Rawson's excavation of the Palace of Nestor site from 1939 to 1966. These notes were an invaluable resource for my dissertation work, providing a wealth of unpublished information and new insights on old topics.*

— EMILY EGAN, 2010—II IONE MYLONAS SHEAR FELLOW





Among the items acquired during this period was a bound collection of pamphlets on hunting belonging to Johannes Gennadius, which included an autograph letter to Stephanos Skouloudis, whose archives are housed in the Gennadius Library.

The holdings of the School's research libraries continued to expand to meet the needs of visiting researchers and scholars.

As of 2012, the collection of the **Blegen Library** neared the milestone of 100,000 physical volumes. Nearly 3000 new monographs were added to the Blegen holdings over the 2010–11 and 2011–12 academic years, of which more than 400 were acquired as gifts or through exchange agreements. Among notable additions to the collection were the electronic format edition of *Supplementum Epigraphicum Graecum* and the Packard Humanities Institute's Classical Latin Texts.

The **Gennadius Library** added to its holdings, by gift and purchase, rare materials and works of art, including:

- *Akolouthies* pamphlets significant to the history of the Orthodox liturgical tradition

- Bilingual Greek-Latin edition of Achilles Tatius' Hellenistic novel *Erotika*, published in Leiden in 1640
- Artworks by Roger Tourte (1903–1972)
- Artworks donated by several artists who participated in the 2010 exhibit "Johannes Gennadius and his World"
- Abraham Ortelius's *Thesaurus geographicus*, published in 1611, in its original binding
- *A general view of the rise, progress, and brilliant achievements of the American navy, down to the present time* (Brooklyn [1828]), which includes an account of the battle of Navarino
- Rare book on the Peloponnesus, *L'origine della Morea* (Venice, 1686)
- Children's book on geography, *Των παιδων η Γεωγραφία: με επτά γεωγραφικούς πίνακας και*

εβδομήκοντα τρεις εικονογραφίας, printed in Malta by the American Typography in 1832

- 1932 book on the life of Cephalonian adventurer Konstantinos Gerakis (1647–1688)
- Armenian Bible printed in Istanbul in 1895
- Six volumes of the Greek philological journal *Γράμματα*, published in Alexandria (1911–1921), demonstrating the significance of the Greek diaspora on modern Greek thought
- Nineteenth-century periodicals *Ο αστήρ της Ανατολής* (The Star of the Orient) and *Magazzino pittorico universal*
- Several important books from the library of Eleutherios and Lili Venizelos.

2011–12 ASCSA Student Associate Members Emily Egan, Christian Cloke, and Dallas DeForest consult the School Archives in the Blegen Library. Among the Archives' recent acquisitions are several hundred letters that famed archaeologist Carl W. Blegen wrote to his sisters and brother from Greece, from 1910 to 1970; the correspondence was donated to the School by Blegen's nephew, Robert Blegen.





*"I visited your web page and found [the Schliemann digital diaries and copybooks] with great joy. Their quality is amazing! The scans are very helpful for all of us, who are not so lucky to be able to work in the Gennadius Library constantly."*

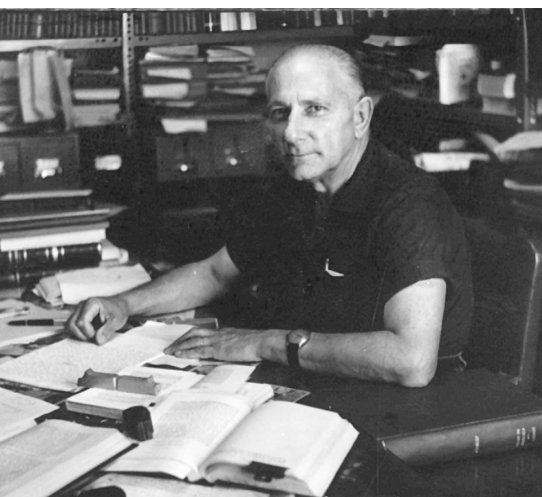
— MICHAELA ZAVADIL, AUTHOR OF EIN TROJANISCHER FEDERKRIEG:  
DIE AUSEINANDERSETZUNGEN ZWISCHEN ERNST BOETTICHER  
UND HEINRICH SCHLIEMANN

Among the materials donated to the **Archives** of the School and the Gennadius Library during this period were:

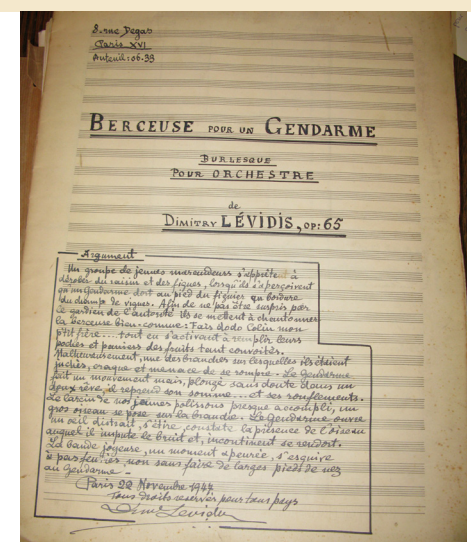
- Papers of composer Dimitry Levidis
- Papers of Konstantinos Bouras, a member of the resistance organization Midas 614
- Letters that the famed archaeologist Carl W. Blegen wrote to his sisters and brother from Greece, from 1910 to 1970
- Drawing by architect Charles Frederick Owsley of the house of Alice Walker Cosmopoulos in Old Corinth
- Early-twentieth-century lantern slides and reels of film that belonged to Oscar Broneer, depicting ancient and modern monuments of Athens and other sites
- Papers of journalist and politician Constantine A. Vovolinis
- Personal papers of Vasilis Vasilikos, author of more than 90 books, including the novel "Z"
- Correspondence between French poet and translator Xavier Bordes and Nobel-laureate poet Odysseus Elytis, as well as photographs of Elytis, audio tapes, and press clippings, from Mr. Bordes' personal papers
- Collection of folders that belonged to Peter Topping, former Gennadius Librarian, concerning administrative issues of the library
- Letters that well-known poet Kostis Palamas wrote to Nicholas D. Fandrides, as well as some of his books with Palamas's autograph inscription
- Personal correspondence of Spyridon Marinatos from 1929 to 1939, covering his service as Ephor of Antiquities on Crete and as Director of Antiquities in the Ministry of Education

The Archives also bought several hundred photographs related to the Schliemann family and its descendants (especially the Andromache Schliemann Melas branch). This collection adds valuable information to the Schliemann papers and sheds light on the Melas family, one of the most important Athenian families of the first half of the twentieth century.

**Below: Papers of composer Dimitry Levidis were donated to the archives by his niece, Mrs. Rita Bouboulidou. Levidis, who lived in France from 1910 to 1932, was prolific in many genres and much appreciated during his career.**



Left: In 2012, Mrs. Alexandra Vovolini donated her father's papers to the Archives of the Gennadius Library. Journalist and politician Constantine A. Vovolinis was the creator of the Great Greek Biographical Dictionary. The 2,655 files of the archive contain data that Mr. Vovolinis collected with the intention to write biographical essays of people active in Greek public life in the late nineteenth and twentieth centuries. The researchers who have already used the archive say that it is an invaluable tool for historical research.







Left: Eleanna Prevedorou, 2011–12 Wiener Laboratory J. Lawrence Angel Fellow in Skeletal Studies, used Laboratory resources and facilities for her research on Bronze Age burial practices.



Scientific research on archaeological materials is greatly assisted by the growing reference collections housed within the **Wiener Laboratory**. The Wiener Laboratory's permanent reference collections benefited from the contributions of both time and materials by laboratory staff, fellows and associates, excavators, interested scholars, and colleagues at other research institutions.

Recent donations to the Wiener Laboratory have expanded the lab's existing archaeobotanical comparative collection, with significant contributions to the extant collection of seed specimens. A modern human dental comparative collection and a freshwater fish bone reference collection were also recently established.

Above: In academic year 2011–12, the Wiener Laboratory launched a series of five thematic workshops (pots, food, bones, color, and stones) designed to introduce Regular Members to how science-based archaeology can help contextualize their research and inform their conclusions. Here, students gain hands-on experience with clay in a workshop conducted by Lab Fellow Eleni Nodarou and Jerolyn Morrison.



## PUBLICATION

In 2012, the School began offering ASCSA eBooks either as a standalone option or in a print plus electronic bundle. The availability of the dual format—print for the office, digital for traveling—is in response to the needs of today's readers.

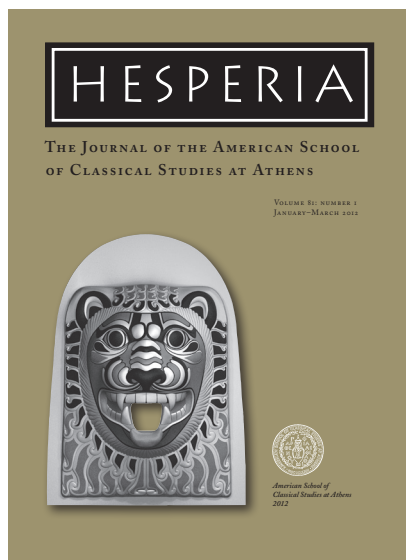


ASCSA Publications continues to fulfill its mission to foster the study of Greece in all periods, as well as other areas of the classical world. Andrew Reinhard joined the Princeton office as the Director of Publications in August 2010. In 2011, ASCSA Publications set two records, publishing seven monographs totaling over

5,000 typeset pages. The Gennadeion Monographs series was resurrected by its sixth volume, simultaneously published in Greek and English. *Hesperia* Supplements received a facelift via new cover designs and branding. In 2012, ASCSA Publications created eBooks of current titles and print-on-demand editions of out-of-print volumes.



Right: In its eightieth volume year, *Hesperia* consolidated its online presence by placing the full run of issues in JSTOR's Current Scholarship Program (CSP). The journal also adopted an Open Access policy, making all issues published between 1932 and 2009 available for free on the ASCSA's website.



Left: *Histories of Peirene: A Corinthian Fountain in Three Millennia* by Betsey Robinson (pictured), received the PROSE Award from the Professional and Scholarly Publishing (PSP) division of the Association of American Publishers, recognizing the publication as the best book in the category of archaeology and anthropology for 2011.



Author Kathleen Lynch poses with her *Hesperia* Supplement, *The Symposium in Context* — the first in the series published with the new branding.

The following volumes were produced in academic years 2010–11 and 2011–12:

## 2010

*The Sanctuary of Demeter and Kore: The Terracotta Sculpture (Corinth XVIII.5)*, Nancy Bookidis

*Crete in Transition: Pottery Styles and Island History in the Archaic and Classical Periods (Hesperia Supplement 45)*, Brice L. Erickson

## 2011

*Histories of Peirene: A Corinthian Fountain in Three Millennia (Ancient Art and Architecture in Context 2)*, Betsey A. Robinson

*The Symposium in Context: A Late Archaic House Near the Athenian Agora (Hesperia Supplement 46)*, Kathleen M. Lynch

*Exploring Greek Manuscripts in the Gennadius Library (Gennadeion Monographs VI, Greek and English editions)*, Maria Politi and Eleni Pappa, eds.

*Inscriptions: The Dedicatory Monuments (Agora XVIII)*, Daniel J. Geagan

*The Early Bronze Age Village on Tsoungiza Hill (Nemea Valley Archaeological Project I)*, Daniel J. Pullen

*Land of Sikyon: Archaeology and History of a Greek City-State (Hesperia Supplement 39)*, Yannis A. Lolos

*STEGA: The Archaeology of Houses and Households in Ancient Crete (Hesperia Supplement 44)*, Kevin T. Glowacki and Natalia Vogeikoff-Brogan, eds.

## 2012

*The New Griffon, vol. 12: Hidden Treasures at the Gennadius Library*, Maria Georgopoulou and Irini Solomonidi, eds.

*The Roman and Byzantine Graves and Human Remains (Isthmia IX)*, Joseph L. Rife



## OUTREACH

At the 2011 Open Meeting on the Work of the School, ASCSA Director Jack Davis summarized the past year's activities for a standing-room-only audience in the School's Cotsen Auditorium (shown here) and, the following week, for attendees in Thessaloniki.



The ASCSA is deeply committed to building and supporting collaborative relationships within the academic, scientific, and cultural communities, thereby enriching the experiences not only of School Members but of the broader public.

The School's formal lecture program brought renowned academics representing diverse fields to speak at the ASCSA. Lectures in Athens are

broadcast live on the School's website at [www.ascsa.edu.gr/index.php/about/livestream](http://www.ascsa.edu.gr/index.php/about/livestream), and are archived for later access.

School staff also participated in a number of conferences, symposia, workshops, and exhibitions. A representative list of these efforts is included on pages 22–23.





Left: The Gennadius Library held an event on October 11, 2011, at Cotsen Hall to celebrate the publication of *Exploring Greek Manuscripts in the Gennadius Library*, volume VI in the relaunched Gennadeion Monographs series. Speakers at the event included Gennadeion Director Maria Georgopoulou, volume co-editor Maria Politi, and Director of Publications, Andrew Reinhard (via Skype from the U.S.) The event was broadcast live.

Below left: Second graders from the elementary school of Ancient Corinth discuss ancient medicine in the Asklepieion room with Corinth Assistant Director Ioulia Tzonou-Herbst.



Above: Marinela and Margaret Samourkas with one of the historical maps on display in the Gennadeion's Basil Room, part of the 2011 exhibition "Abraham Ortelius' Greece. Maps from Margaret Samourkas's Collection." Curated by George Tolia of the National Hellenic Research Foundation, the exhibition explored the cartographic resources on which Ortelius based his maps of Greece and its regions from antiquity to the sixteenth century.



Left: Helen Milonas, ASCSA Trustee Charles K. Williams, II, and Executive Director Irene Romano enjoy the School's annual Clean Monday event in New York City, which benefits the Gennadius Library.



## ASCSA LECTURES AND CONFERENCES

### IN ATHENS

#### 2010–11

Apostolos Doxiadis (Writer, Logicomix), Alecos Papadatos (Illustrator, Logicomix), and Eric Shanower (Cartoonist, Age of Bronze): “Graphic Greeks: Ancient Greece in Three Comics Narratives”

Jacques Bouchard (University of Montreal): “Οι Φαναριώτες και ο πρώιμος Διαφωτισμός” [Role of the Phanariots in the Early Enlightenment (1680–1780)] (introduction by Alexis Malliaris)

Kathleen Warner Slane (University of Missouri–Columbia): “A Decent Burial: Commemoration and Community in Roman Corinth”

Trustees’ Lecture: Cynthia W. Shelmerdine (The University of Texas at Austin): “The Ordinary Mycenaean”

Walter Scheidel (Stanford University): “The Quality of Life in Classical Antiquity”

Xeni Arapogianni (ΑΗ΄ΕΠΚΑ) Παλιές και νέες αρχαιολογικές ανακαλύψεις στη Μεσσηνία

Roderick Beaton (King’s College London): “Exiles in Pisa, 1821: Mavrokordatos, the Shelleys, and the Greek Revolution”

Suraiya Faruqi (Istanbul Bilgi University): “Working in Cotton, Metal and Fayence: Ottoman Artisans in the Early Modern Age”

Exhibition: “Abraham Ortelius’ Greece. Maps from Margaret Samourkas’s Collection” (opening lecture: George Tolia, National Hellenic Research Foundation)

John Bennet (University of Sheffield): “Telltale Depictions: A Contextual View of Mycenaean Wall-Paintings”

Workshop: “Mycenaean Wall-Paintings in Context: New Discoveries and Old Finds Reconsidered” (co-sponsored with KERA)

Silvana Blazevska (National Institution Stobi): “New Excavations at Stobi 2009–2010”

Corey Brennan (American Academy in Rome): “Baldness in the Greek and Roman Imagination”

Open Meeting on the Work of the School: Jeffrey S. Soles (University of North Carolina–Greensboro): “The Goddess and the Ancestors at Mochlos, Crete”

Walton Lecture: Sir Michael Llewellyn Smith (King’s College London): “Kings, Princes and Powers: Venizelos and Dilemmas of National Revival”

Malcolm H. Wiener Lecture: Michael MacKinnon (University of Winnipeg): “Animals in the Agora: Reconstructing Cultural Life in Ancient Athens from Zooarchaeological Remains”

Archives Lecture: Evanthis Hatzivasilou (University of Athens): “The Americans and the Greeks, 1949–1959: Intervention and Modernization”

*Fitch-Wiener lectures held at ASCSA:*

Michael MacKinnon (University of Winnipeg): “Taking sides: Cultural choices in ancient animal sacrifice”

Albert Ammerman (Colgate University) and Ioannis Iliopoulos (University of Patras): “Sourcing the earliest roof tiles and architectural terracottas in Rome”

Vicky Elefanti (Ephoreia of Palaeoanthropology and Speleology of Southern Greece): “When Neanderthals and moderns met. The case of Lakonis I Cave, southern Peloponnese”

Georgia Tsartsidou (Ephoreia of Palaeoanthropology and Speleology of Southern Greece): “Investigating palaeolithic plant exploitation using phytolith analysis: The example of Theopetra Cave in Thessaly, Greece”

Ioanna Moutafi (University of Sheffield): “The secret of the mosque: A perplexing burial assemblage of the Ottoman period from the Anavarini-Dedid Mosque, Pylos”

#### 2011–12

Book Presentation of Gennadeion Monograph VI: “Exploring Greek Manuscripts in the Gennadius Library,” edited by Maria L. Politi and Eleni Pappa (in collaboration with the Greek Paleographical Society)

Jörg Rambach (ΑΗ΄ΕΠΚΑ): “Recent Prehistoric Finds at the Costa Navarino Resort in Messenia”

Ioulita Iliopoulou (Poet): “Οδυσσέας Ελύτης. Στοιχεία μιας ποιητικής ταυτότητας”

Björn Forsén (University of Helsinki): “Sanctuary of Secrets: Agia Paraskevi of Arachamitai in Arcadia from the Sixth to the First Century B.C.”

Vassilis Vassilikos (Author): “Λογοτεχνία και τεχνολογία”

Richard Hodges (University of Pennsylvania and Butrint Foundation): “An ‘Ice Age Settling on the Roman Empire’: Excavating Butrint between Strategy and Serendipity”

Joseph W. Day (Wabash College): “A Muse on Stone or an ‘Un-read Muse’: Did Greeks Read Inscribed Epigrams?”

Glenn A. Peers (University of Texas at Austin): “Forging Byzantine Animals: Manuel Philes in Renaissance France”

Edward E. Cohen (University of Pennsylvania): “Financial Crisis! Economic Lessons from Ancient Athens”

Alice-Mary Talbot (Dumbarton Oaks): “Women and Mt. Athos: Insights from the Archives of the Holy Mountain”



Meera Dass (Architectural Historian, New Delhi): "The Stambhas and Dvajas (Dedicatory Pillars to Gods) and the Greek Presence in Central India"

Eleni Banou (Β' ΕΠΙΚΑ) and Eleni Tsivilika: "More on the Middle Minoan Period in Crete: The Case of the Coastal Site of Pera Galenoi"

Open Meeting on the Work of the School: Clemente Marconi (New York University): "New Investigations on the Akropolis of Selinunte, Sicily: The Archaeology of a Greek Colony in the West"

Stathis Kalyvas (Yale University): "Αντίσταση και Εμφύλιος: Διερευνώντας μία δύσκολη διαπλοκή"

Joanita Vroom (University of Amsterdam): "Mr. Turkey Goes to Turkey. How a Dutch Diplomat Wined and Dined in 18th-century Constantinople"

Malcolm H. Wiener Lecture: Michael D. Glascock (University of Missouri-Columbia): "Chemistry and Provenance: Production and Exchange of Ceramics from Greece and the Eastern Mediterranean"

Walton Lecture: Henry Maguire (Johns Hopkins University): "Nectar and Illusion: Art, Nature, and Rhetoric in Byzantium"

Nancy Bookidis (ASCSA): "Corinth: A Portrait of an Idiosyncratic City"

Artemis Cooper (Biographer): "Patrick Leigh Fermor in Greece"

Archives Lecture: Fikret Yegül (University of California, Santa Barbara): "Our Complicity in this Classical Looting: Triangulating the Past at Sardis, 1922–1925"

*Fitch-Wiener lectures held at ASCSA:*

Eleanna Prevedorou (Arizona State University): "Shedding light on the dark Cave of Andritsa, Argolid: A biogeochemical approach to the Early Byzantine human remains"

Konstantinos Kopanias (University of Athens), Angelos Hadjikoumis (British School at Athens), Sherry Fox (American School of Classical Studies), "Integrating science and archaeology in Kurdistan: The Tell Nader Project, Erbil, Iraq"

Valasia Isaakidou (University of Sheffield), "Biographical bones and symbolic stones? Exploring materiality in the EBA Aegean"

Chryssi Bourbou (28th Ephorate of Byzantine Antiquities): "Outside the Confined Burial Ground: Towards the Bioarchaeology of the Marginalized Death in Antiquity"

## IN THE U.S.

### 2010–11

John McK. Camp II (Director of the Athenian Agora Excavations of the ASCSA), "The Archaeology of Democracy: Excavations in the Athenian Agora," at the Embassy of Greece, Washington, DC

Katherine A. Schwab (Fairfield University), "Investigating the Surface: the Parthenon Metopes and Caryatid Hairstyles," at the Embassy of Greece, Washington, DC

Maria Georgopoulou (Director of the Gennadius Library), "Venice and Byzantium after 1204," at the Consulate General of Greece, New York, NY

### 2011–12

David Gilman Romano (University of Pennsylvania, Museum of Archaeology and Anthropology), "Zeus on an Arcadian Mountaintop and the Parrhasian Heritage Park of the Peloponnesos," at the Embassy of Greece, Washington, DC

In celebration of the 100th anniversary of the birth of Nobel laureate poet Odysseus Elytis (1911–1996), the Gennadius Library collaborated with the B. & M. Theocharakis Foundation for the Fine Arts and Music on a major exhibition of Elytis' creations, with a focus on his artwork. The Library loaned nearly 200 items from the Elytis Papers for use in the exhibition.



Jack L. Davis (Director of the ASCSA), "Restoring History to a Dark Age of Greece: the Peloponnese under the Turks, 1500–1828," at the Consulate General of Greece, New York, NY

Guy D.R. Sanders (Director of the Corinth Excavations of the ASCSA), "Trampling Out the Vintage Where the Grapes of Wrath are Stored: Everyday Life in Corinth and Washingtonia at the Time of the Greek War of Independence," at the Embassy of Greece, Washington, DC

Edward E. Cohen (University of Pennsylvania; Trustee Emeritus of the ASCSA Board of Trustees and Member of the Board of Overseers of the Gennadius Library), "Financial Crisis! Economic Lessons from Ancient Athens," at the Embassy of Greece, Washington, DC



## IN MEMORIAM:

## DOREEN CANADAY SPITZER, 1914–2010

“The Trustees of the American School of Classical Studies at Athens are saddened by the loss, on Monday, September 6th [2010], of their colleague, benefactor, and friend, Doreen Canaday Spitzer. She was a remarkable force in the history of the School, its guiding spirit for decades. A student member, fresh out of Bryn Mawr, in 1936–1939, she joined the Board of Trustees in 1978 and served as its President from 1983 to 1988. Then, as President of the Friends of the American School, she was responsible for establishing the School’s professional archives, for founding the Newsletter, and for beginning annual “On Site” tours. For all her contributions, her leadership, and her infectious enthusiasm, the School owes an enormous debt of gratitude. We shall not soon see her equal.”

— memorial to Trustee Emerita Doreen Canaday Spitzer,  
presented by President Emeritus James R. McCredie  
at the Annual Meeting of the Trustees of the ASCSA,  
October 29, 2010

Doreen Spitzer in 1937 at Phaistos with  
a friend and at Vouliagmeni. Below: With  
husband Lyman.







## BOARD OF TRUSTEES OF THE ASCSA, 2010–11 THROUGH 2011–12

Malcolm H. Wiener, *Chair*  
(as of 10/28/2011)  
Charles K. Williams, II, *Chair*  
(until 10/28/2011)  
Robert A. McCabe, *President*  
Henry P. Davis, *Treasurer*  
William T. Loomis, *Secretary*

Joan Bingham  
Andrew P. Bridges  
Jane E. Buikstra  
Jonathan Z. Cohen  
Paul D. Friedland  
Elizabeth R. Gebhard  
Mary R. Lefkowitz  
J. Robert Maguire  
James R. McCredie\*  
Nassos Michas  
(as of 10/29/2010)  
Hunter R. Rawlings III  
Damaris Skouras  
William Slaughter  
Mary C. Sturgeon\*\*\*  
Phaedon T. Tamvakakis  
(as of 10/29/2010)

Judith Ogden Thomson  
Malcolm H. Wiener  
(until 10/28/2011)  
Charles K. Williams, II  
(as of 10/28/2011)  
Alexander E. Zagoreos  
(as of 10/29/2010)

**Trustees Emeriti/ae**  
Alan L. Boegehold  
Edward E. Cohen  
Lloyd E. Cotsen\*  
(as of 10/29/2010)  
Charles Fleischmann, III†  
(until 3/2/2011)  
Hunter Lewis\*  
Herbert L. Lucas

Mary Patterson McPherson  
Andre Newburg  
James H. Ottaway, Jr.\*\*  
(as of 10/29/2010)  
David W. Packard  
William Kelly Simpson\*\*  
Doreen C. Spitzer\*†  
(until 9/6/2010)

\*President *Emeritus/a*  
\*\*Chair *Emeritus*  
\*\*\**Ex Officio*  
†Deceased



## BOARD OF OVERSEERS OF THE GENNADIUS LIBRARY, 2010–11 THROUGH 2011–12

Alexander E. Zagoreos, *Chair*  
Nassos Michas, *Vice Chair*  
Phaedon T. Tamvakakis,  
*Secretary-Treasurer*

Ted Athanassiades\*  
(*Emeritus* as of 6/6/2011)  
Nicholas G. Bacopoulos  
Alan L. Boegehold\*\*  
(*Emeritus* as of 10/27/11)  
R. Nicholas Burns  
(as of 11/22/2010)  
Edward E. Cohen  
Apostolos Th. Doxiadis  
Anastasios I. Leventis  
Anthony G. Lykiardopoulos  
Lana J. Mandilas  
(*Emeritus* as of 10/28/10)  
Olga Maridakis-Karatzas  
Mark Mazower  
(as of 10/27/11)

Robert A. McCabe, *Ex Officio*  
E. Leo Milonas  
Irene Moscahlaidis  
(*Emeritus* as of 6/6/2011)  
Andre Newburg  
(*Emeritus* as of 6/12/2012)  
Theodore Sedgwick  
(until 7/27/2010)  
Margaret Samourkas  
George T. Soterakis  
(as of 10/27/11)  
Yiannis Stournaras  
(until 10/28/2010)  
Mary C. Sturgeon, *Ex Officio*  
Susan Buck Sutton  
(as of 10/27/11)

Nicholas J. Theocarakis  
Alexandra C. Vovolini  
(as of 2/3/2012)

**Emeriti/ae**  
Lloyd E. Cotsen\*\*  
Michael S. Dukakis  
Edmund Keeley  
Loucas Kyriacopoulos  
Helen Philon  
Petros K. Sabatacakis  
Elias M. Stassinopoulos  
Catherine deG. Vanderpool

\*Vice Chair *Emeritus*  
\*\*Chair *Emeritus*



## STAFF OF THE SCHOOL, ACADEMIC YEARS 2010–11 AND 2011–12

## IN GREECE

**Director and Professor of Classical Studies:**

Jack L. Davis

**Andrew W. Mellon Professor of Classical Studies:**

Margaret M. Miles

**Secretary of the School:**

Robert A. Bridges, Jr.

**Whitehead Professors:**

Nancy Felson and Clemente Marconi ('10–'11), Joseph Day and Glenn A. Peers ('11–'12)

**Malcolm H. Wiener Visiting Research Professor:**

Michael MacKinnon ('10–'11)

**Directors of the Summer Sessions:**

Kirk Ormand, Clayton M. Lehmann (Summer 2010); Glenn Bugh, Mary Lou Zimmerman-Munn / Mark Munn (Summer 2011)

**General Manager:**

Pantelis Panos

**Administrator:**

Maria Pilali (until 12/2010)

**Administrative Assistant to the Director:**

Ioanna Damanaki ('11–'12)

**Development Assistant:**

Irin Mantzavinou

**Head Accountant:**

Demetra Bakodima

**Accountant:**

Dina Zissopoulou

**Bursar:**

Denise Giannaris

**Manager of Loring Hall:**

Niamh Michalopoulou

**Administrative Secretary:**

Elena Kourakou

**Administrative Assistant:**

Pandelis Paschos

**Receptionists:**Eleni Balomenou  
Natassa Kanellopoulou**Information Systems & Technology Manager:**

Tarek Elemam

**Information Technology****Assistant:**

Konstantinos Tzortzinis

**EEA Grant Project Coordinator:**

Maria-Louiza Laopodi

**Doctor:**

Nikos Michalopoulos

**Archives****Doreen Canaday Spitzer****Archivist:**

Natalia Vogeikoff-Brogan

**Research Archivist:**

Leda Costaki

**Reference Archivist:**

Eleftheria Daleziou

**Assistant Archivist:**

Vassilis Spanos (until 6/2011)

Alexis Malliaris

**Blegen Library****Head Librarian:**

Karen Bohrer

**Associate Librarian:**Elisavet Mitsou Gignoli  
(until 12/2010)**Collection Development****Librarian:**Yuki Furuya (until 6/2011)  
Jeremy Ott (as of 11/2011)**Cataloguing Librarian:**

Eleni Sourligka (as of 1/2011)

**Assistant Librarian:**

Maria Tourna

**Library Assistant, Cotsen Hall****Secretary**

Susanna Ipiroti

**Library Assistant**

Maria Gkoutidou (as of 1/2011)

**Librarian Emerita:**

Nancy A. Winter

**Gennadius Library****Director:**

Maria Georgopoulou

**Administrative Assistant to the Director:**

Maria Smali

**Senior Librarian:**

Irin Solomonidi

**Assistant Librarian,****Acquisitions:**

Gabriella Vasdeki

**Cataloguer:**

Giannis Valourdos

**Periodicals Cataloguer:**

Asimina Rodi

**Assistant Librarian, Reading****Room Desk Attendant:**Andreas Sideris  
(until 6/2011)**Reading Room Desk****Attendants:**Euphrosyne Panagopoulou,  
Dimitris Velentzas**Photographic Archives:**

Katerina Papatheophani

**Research Associate:**

Aliki Asvesta

**Head Librarian, Emerita:**

Sophie Papageorgiou

**Agora Excavations****Director:**

John McK. Camp, II

**Manager ('10–'11) /****Deputy Director ('11–'12):**

Craig A. Mauzy

**Secretary:**

Jan Jordan

**Architect Emeritus:**

Richard C. Anderson

**Registrar:**

Sylvie Dumont

**Head Conservator:**Amandina Anastassiades  
(until 6/2011)

Karen Lovén (as of 7/2011)

**Assistant Conservator:**

Karen Lovén (until 6/2011)

**IT Specialist:**

Bruce M. Hartzler

**Database Project:**

Pia Kvarnström Stavrinidi

**Photographer:**

Angelique Sideris

**Archaeological Illustrator:**

Annie Hooton

**Corinth Excavations****Director:**

Guy D.R. Sanders

**Assistant Director:**

Ioulia Tzonou-Herbst

**Conservator:**

Nikol Anastasatou

**Architect:**

James A. Herbst

**Director Emeritus:**

Charles K. Williams, II

**Assistant Director Emerita:**

Nancy Bookidis

**Wiener Laboratory****Director:**

Sherry C. Fox

**Administrative Assistant****to the Director:**

Eleni D. Stathi ('10–'12)







## STAFF OF THE SCHOOL, ACADEMIC YEARS 2010–11 AND 2011–12

### IN THE UNITED STATES

#### Executive Director:

Mary Emerson (as of 3/2012)

#### Administrative Director:

Irene Bald Romano  
(until 2/2012)

#### Executive Associate:

Mary E. Darlington

#### Budget Director:

Richard Rosolino

#### Consulting Chief Financial Officer:

John J. Sproule

#### Bookkeeper:

Linda Ferry (until 12/2011)  
Bridget Carnevale (as of 2/2012)

#### Development Officer and Events Manager:

Jane Conlon Goble

Capital Campaign and  
Corporate, Foundation, and  
Government Relations Manager:  
Minna M. Lee

#### Administrative Assistant for Development:

Glynn Chesnut  
(until 10/2011)

#### Database Manager and Development Assistant:

Abigail Fischer (as of 1/2012)

#### Receptionist:

Holly Dawn Crane

#### Director of Publications:

Andrew Reinhard (as of 8/2010)

#### Managing Editor:

Carol A. Stein ('10–'12)

#### Acting Director of Publications:

Carol A. Stein (until 8/2010)

#### Editor, *Hesperia*:

Tracey Cullen

#### Interim Editor, *Hesperia*:

Mark Langdon  
(7/2011 – 1/2012)

#### Editor, Monographs:

Michael A. Fitzgerald

#### Editor:

Timothy D. Wardell

#### Production Manager:

Sarah George Figueira

#### Manager, Creative Services:

Mary Jane Gavenda

#### Editor *Emerita*:

Marian McAllister

Staff photos, clockwise from top: Kolonaki campus in Athens; Princeton, New Jersey office; Excavations at Ancient Corinth; and Athenian Agora Excavations.

Photo, opposite page: Secretary of the School Robert Bridges retired from the School at the end of the 2012 academic term after 29 years of service (shown here with a Summer Session student at the Brauron Museum).



## MEMBERS OF THE SCHOOL

2010–11

## REGULAR MEMBERS

Fellows of the School**Evelyn Wynn Adkins**

University of Michigan  
Michael Jameson Fellow  
*Identity politics and social history in Apuleius' Latin novel The Golden Ass*

**John Tristan Barnes**

University of Missouri –  
Columbia  
John Williams White Fellow  
*Cultural identity and cultural geography of the southeast Aegean from 1200–700 B.C.E.*

**David Matthew Buell**

SUNY – Buffalo  
James H. and Mary Ottaway, Jr.  
Fellow  
*Settlement patterns and urbanism in the Bronze Age Mediterranean*

**Megan Campbell**

University of Toronto  
Thomas Day Seymour Fellow  
*Social and economic history of Classical and Hellenistic Crete*

**Andriy Fomin**

Rutgers, The State University  
Martin Ostwald Fellow  
*How Dio wrote history: Intellectual, historical and literary techniques*

**Johanna M. Hobratschk**

Johns Hopkins University  
Bert Hodge Hill Fellow  
*Analysis of ancient ceramics*

**Noah Kaye**

University of California  
at Berkeley  
Heinrich Schliemann Fellow  
*Attalid administration 188–133 B.C.*

**Katie Lamberto**

SUNY – Buffalo  
Lucy Shoe Meritt Fellow  
*Dionysos in the Second Sophistic*

**Emilia Oddo**

University of Cincinnati  
Emily Townsend Vermeule  
Fellow  
*Neopalatial pottery from Myrtos-Pyrgos*

**Bice Peruzzi**

University of Cincinnati  
James Rignall Wheeler Fellow  
*How the populations of Peucetia chose to represent themselves through grave good assemblages*

**Emily Elizabeth Stevens**

Bryn Mawr College  
Virginia Grace Fellow  
*Mediterranean interactions in the rise of Greek civilization*

**Debra Ann Trusty**

Florida State University  
Philip Lockhart Fellow  
*Pots in the periphery: Ceramic analysis of Mycenaean cooking pottery & its implications for secondary centers*

Other Regular Members**Jacquelyn H. Clements**

Johns Hopkins University  
*Greek sanctuaries and festivals, topography, spolia and the reuse/appropriation of ancient materials and sites, and funerary archaeology and iconography*

**Martin Gallagher**

Boston University  
*Town planning and settlement patterns and their connections to larger social trends in the Archaic and early Classical periods*

**Reema Raihana Habib**

Florida State University  
*Demography and identity in Hellenistic mortuary populations*

**Alex R. Knodell**

Brown University  
*Iron extraction and the ironworking landscapes of Euboea*

**Amanda Susan Reiterman**

University of Pennsylvania  
University of Pennsylvania  
Colburn Fellow  
*Objects with histories in Greek and colonial contexts during the 6th and 5th centuries B.C.*

**Jeffrey Allen Rop**

Pennsylvania State University  
*Greek mercenaries in the 4th-century Achaemenid empire*

## ASSOCIATE MEMBERS

Holding School Fellowships**Natalie D. Abell**

University of Cincinnati  
Paul Rehak Traveling Fellow  
(2009–2010)  
*Reconsidering a cultural crossroads: Diachronic analysis of island identity and Aegean connectivity in Bronze Age Kea*

**William Bruce**

University of Wisconsin –  
Madison  
Eugene Vanderpool Fellow  
*Industry, community and the sacred: Life outside the city walls at Sardis before and after the Persian conquest*

**Christian F. Cloke**

University of Cincinnati  
Homer A. and Dorothy B.  
Thompson Fellow  
*Populating the Nemea Valley landscape*

**Dallas DeForest**

Ohio State University  
Fulbright Fellow, Honorary Jacob  
Hirsch Fellow  
*Baths and the culture of bathing in Late Antique Greece, 300–700 A.D.*

**Emily Egan**

University of Cincinnati  
Ione Mylonas Shear Fellow  
*Nestor's Megaron: Contextualizing a Mycenaean institution at Pylos*

**Sarah James**

University of Texas at Austin  
Henry S. Robinson Corinth  
Research Fellow  
*The Hellenistic pottery from the Panayia Field, Corinth: A typological and historical analysis*

**Hüseyin Öztürk**

University of Cincinnati  
Doreen C. Spitzer Fellow  
*The formation of Mycenaean identities*

**Jessica Paga**

Princeton University  
Gorham Phillips Stevens Fellow  
*Architectural agency and the construction of Athenian democracy*

**Kelcy Sagstetter**

University of Pennsylvania  
Edward Capps Fellow  
*Documentation and epigraphical analysis of ancient Greek inscriptions via 3-D laser scanning*

**Krisztina Szilagyi**

Princeton University  
M. Alison Frantz Fellow  
*After the prophet's death: The body of Muhammad in Christian-Muslim polemic*

Student Associate Members**Lillian Dogiama**

McMaster University  
Coulson/Cross Fellow  
*Lithic material from Catalhöyük, a Neolithic site in central Anatolia*

**Sara Franck**

University of Minnesota,  
Twin Cities  
Anne C. and Oliver C. Colburn  
Fellow (AIA)  
*Bucolic architecture: Hellenistic pastoral temples in the Peloponnese*

**Mark Hammond**

University of Missouri –  
Columbia  
*From sherds to assemblages: A diachronic view of archaeological assemblages and their economic implications in late Roman Corinth (3rd–7th c. A.D.)*

**Jason Harris**

University of Southern California  
*Mobility and identity among Greeks in Magna Graecia during the late Classical and Hellenistic periods*

**David Hoot**

University of Florida  
*Roman Epidauros*

**Styliani Kalle**

Coulson/Cross Fellow  
*Greece and Turkey: Representations of "Ourselves" and of the "Other" in Greek and Turkish history school textbooks and construction of national identities (1950–1974)*



**Georgios Karatasios**  
University of Athens  
Coulson/Cross Fellow  
*Mechanisms and procedures of transformation during the Samos Hegemony (1834–1912)*

**Ioannis Kolakis**  
Coulson/Cross Fellow  
*Social history of the Greek island of Chios during the late 18th & early 19th century*

**Christina Kolb**  
University of Cincinnati  
*The changing landscapes of Roman Crete*

**Nitzan Levin**  
University of Haifa  
*Bees, honey and hives: Representation and meaning in ancient Greek art, 7th–4th century B.C.*

**Sarah Madole**  
Institute of Fine Arts,  
New York University  
*Sarcophagus imagery and the construction of identity in Roman Asia Minor*

**Ismini A. Miliaresis**  
University of Virginia  
CAORC Multi-Country  
Research Fellow  
*Heating and fuel consumption in the Forum baths at Ostia: An interdisciplinary approach*

**Jerolyn Elizabeth Morrison**  
INSTAP East Crete  
Study Center  
University of Houston  
*Cooking pots and cooking practices*

**Ioanna Moutafi**  
University of Sheffield  
Wiener Laboratory J. Lawrence  
Angel Fellow in Human Skeletal  
Studies  
*Bioarchaeological analysis of the human remains from the Mycenaean cemetery of Voudeni, Achaea*

**Lincoln Thomas Nemetz-Carlson**  
Ohio State University  
Kress Art and Architecture in  
Antiquity Fellow  
*Perceptions of the past and depictions of the present in Athenian monumental art of the 5th century*

**David R. Scahill**  
University of Bath  
*The architecture of the South Stoa at Corinth*

**Senior Associate Members**  
**(Holding Fellowships Awarded Through the ASCSA)**

**Katherine M. Harrell**  
University of Sheffield  
Jacob Hirsch Fellow  
*Violence and the making of the Mycenaean social order*

**Paul A. Iversen**  
Case Western Reserve University  
Kress Publications Fellow  
*The Greek and Latin inscriptions found on Temple Hill, Corinth*

**Danielle Leigh Kellogg**  
Brooklyn College, CUNY  
NEH Fellow  
*Deme and domicile: The movement of populations in Attika*

**Luisa Sonia Klinger**  
University of Haifa  
Kress Publications Fellow  
*The small finds of the Demeter and Kore sanctuary at Ancient Corinth*

**Theodora B. Kopestonsky**  
Denison University & Columbus  
State Community College  
Henry S. Robinson Corinth  
Research Fellow  
*Analysis & interpretation of the stratigraphy, artifacts, spatial organization, & use of a small area of the ancient Greek city of Corinth - Kokkinovrysi*

**Pasquale Massimo Pinto**  
Universita di Bari  
Cotsen Traveling Fellow  
*Constantinos Simonides in the Gennadius Library*

**Paul D. Scotton**  
California State University –  
Long Beach  
Kress Publications Fellow  
*Julian Basilica at Corinth: An architectural investigation*

**Mohammed Tagi Shariat-Panahi**  
University of Athens  
Henry S. Robinson Corinth  
Research Fellow  
*Economic and demographic history of Corinth in the early seventeenth century*

**Kathleen Warner Slane**  
University of Missouri –  
Columbia  
NEH Fellow  
*A slice through time: Tombs along the north terrace of Corinth*

**Georgia Tsartsidou**  
Ephoreia of Palaeoanthropology  
& Speleology of Southern Greece  
Wiener Laboratory Fellow in  
Environmental Studies  
*Flora exploitation and subsistence practices by the palaeolithic and mesolithic occupants of Theopetra cave in Thessaly, Greece: The evidence from phytolith analysis*

**2011–12**

**REGULAR MEMBERS**

**Holding School Fellowships**

**Andrew James Connor**  
University of Cincinnati  
Bert Hodge Hill Fellow  
*The economic and legal infrastructure of the Middle Egyptian temples in the Roman period*

**Stephanie Pamela Craven**  
University of Texas at Austin  
Lucy Shoe Meritt Fellow  
*Influence of Ptolemies on the Aegean world*

**William Flint Dibble**  
University of Cincinnati  
Heinrich Schliemann Fellow  
*Analyzing primary archaeological evidence for food practices*

**Charles A. George**  
Rutgers, The State University  
Emily Townsend Vermeule  
Fellow  
*Theophrastus of Eresus*

**David Thomas Hewett**  
University of Virginia  
Fowler Merle-Smith Fellow  
*Religion, literature, epigraphy*

**Allison Jean Kemmerle**  
Brown University  
Fulbright Fellow; Honorary  
James Rignall Wheeler Fellow  
*Methods of study in epigraphy*

**Jessica Laura Lamont**  
Johns Hopkins University  
Michael Jameson Fellow  
*Amphiaraios' new identity at Oropos, as seen in the last quarter of the 5th century B.C.E.*

**Michael Stevens Leese**  
University of Michigan  
at Ann Arbor  
Virginia Grace Fellow  
*Economic decision-making and business strategies in ancient Greece*

**Jonathan Charles MacLellan**  
University of Texas at Austin  
Martin Ostwald Fellow  
*Greek drama and religion*

**Kyle William Mahoney**  
University of Pennsylvania  
John Williams White Fellow  
*Greek and Roman history, historiography, and archaeology*

**Sarah Jeanette Miller**  
University of Virginia  
James Rignall Wheeler Fellow  
*The role of wise advisor in Herodotus*

**Simon Mark Oswald**  
University of Virginia  
Thomas Day Seymour Fellow  
and Paul Rehak Traveling Fellow  
*Carmina Epigraphica*

**Nicholas James Swift**  
SUNY–Buffalo  
Philip Lockhart Fellow  
*Strabo and language*

**Other Regular Members**

**Leigh Anne Lieberman**  
Princeton University  
*The Persistent Past: Refoundations in Sicily; Magna Graecia in the 5th and 4th centuries B.C.E.*

**Rachel Catherine McCleery**  
Florida State University  
*Public life in Roman Corinth*

**Sharada Price**  
University of Iowa  
*Courtesans in the Second Sophistic*

**Benjamin Laughlin Truesdale**  
University of Pennsylvania  
University of Pennsylvania  
Colburn Fellow  
*Origin and evolution of Christian historiography*



## ASSOCIATE MEMBERS

Holding School Fellowships**John Tristan Barnes**

University of Missouri  
Gorham Phillips Stevens Fellow  
Cultural geography and cultural identity of the southeast Aegean from the end of the Bronze Age through the eighth century

**David Matthew Buell**

SUNY–Buffalo  
Doreen C. Spitzer Fellow  
Urbanism and settlement archaeology in the Bronze Age Mediterranean: A comparative approach

**Sara Jane Franck**

University of Minnesota,  
Twin Cities  
John L. Caskey Fellow  
Bucolic architecture: Hellenistic pastoral temples in the Peloponnese

**Aaron Greener**

Bar-Ilan University  
Jacob Hirsch Fellow  
Late Bronze Age imported pottery in the land of Israel: Between economy, society and symbolism

**Mark David Hammond**

University of Missouri –  
Columbia  
Eugene Vanderpool Fellow;  
Henry S. Robinson Corinth Research Fellow  
From sherds to assemblages: a diachronic view of archaeological assemblages and their economic implications in late Roman Corinth

**Ioanna Moutafi**

University of Sheffield  
Ione Mylonas Shear Fellow  
Bioarchaeological analysis of the LH cemetery of Voudeni, Archaea: Towards a holistic understanding of burial practices and their relationship to social structure

**Robert Joseph Nichols**

Indiana University  
Edward Capps Fellow; Harry Bikakis Fellow  
Rhetoric of Timoria: Constituting vengeance in *Lysias*

**Emilia Oddo**

University of Cincinnati  
Homer A. and Dorothy B. Thompson Fellow

*From pots to politics? Analysis of the neopalatial pottery from the north slope dump at Myrtos Pyrgos, Crete*

Student Associate Members**William Nolan Bruce**

University of Wisconsin  
Kress Art and Architecture in Antiquity Fellow  
Industry, community, and the sacred: Life outside the city walls at Sardis

**Dallas DeForest**

Ohio State University  
Baths and the culture of bathing in late antique Greece, 300–700 A.D.

**Brent Douglas Gilbert**

Catholic University of America  
Fulbright Fellow  
Greek Medice, the image of God, and trinitarian polemic in Gregory of Nyssa's *De Hominis Opificio*

**Myrsini Gkouma**

Vrije Universiteit, Amsterdam  
Wiener Laboratory  
Geoarchaeology Fellow  
Paleolandscape reconstruction on the lakeside of Dispilio: A geoarchaeological approach

**Renee Marie Gondek**

University of Virginia  
Women, dress and nuptial imagery on Attic vases

**Emily Graff**

University of Waterloo  
Wiener Laboratory Travel Grantee  
Mycenaean occupancy of ancient Kallithea: Understanding a population's health, culture, and lifestyle through bioarchaeological analysis

**Jerolyn Elizabeth Morrison**

University of Houston  
Cooking pots and cooking practices

**Niki Papakonstantinou**

University of Sheffield  
Wiener Laboratory Research Associate  
Analysis of human remains from two Mycenaean tholos tombs in Messenia, southern Peloponnese, Greece

**Eleana Prevedorou**

Arizona State University  
Wiener Laboratory J. Lawrence Angel Fellow in Skeletal Studies



2011–12 Members at Goritsa.

*Descent ideology, postmarital residency and cemetery structure: A bioarchaeological approach to sociopolitical organization in early Bronze Age Aegean*

**Angele Rosenberg-Dimitracopoulou**

University of Chicago  
“Praxiteleanism” in Classical and Late Classical Greece

**Debra Ann Trusty**

Florida State University  
Pots in the periphery: Ceramic analysis of Mycenaean cooking pottery and its implications for secondary centers

Senior Associate Members  
(Holding Fellowships Awarded  
Through the ASCSA)**Georgios Antoniou**

Democritus University of Thrace  
George Papaiannou Fellow  
Legacy of the resistance in the postwar political life of Greece: A first evaluation

**Eleni Hasaki**

University of Arizona  
Kress Publications Fellow  
Penteskouphia Pinakes and potters at work in ancient Corinth

**Sarah James**

University of Texas at Austin  
Kress Publications Fellow  
Hellenistic cooking wares, coarse wares, and minor finds

**Gilbert Marshall**

University of London  
Wiener Laboratory Research Associate  
Kephalaria Cave chipped stone project

**Angelos P. Mattaiou**

Greek Epigraphical Society  
Arete Foundation Post Doctoral Epigraphical Fellow  
Laws and decrees of the Athenian state, 403/2–353 B.C.

**China Phebe Shelton**

Framingham State University  
Wiener Laboratory Research Associate  
Food, ritual, and society of Roman Kenchreai

**Anastasia Tatiana**

**Theodoropoulou**  
Université de Paris I; Panthéon Sorbonne  
Wiener Laboratory Post-Doctoral Research Fellow  
From fishermen to citizens: Zooarchaeology and the sea in the rising Greek World

**Chavdar S. Tzochov**

Sofia University  
(St. Kliment Ohridski)  
Kress Publications Fellow  
The Amphora stamps from Thasos found in the Athenian Agora

**Alessia Zambon**

Université de Paris I; Panthéon Sorbonne  
Cotsen Traveling Fellow  
Barbie du Bocage's archives



## COOPERATING INSTITUTIONS AND THEIR REPRESENTATIVES

**American Numismatic Society**  
Peter G. van Alfen

**Amherst College**  
Rebecca H. Sinos

**Arcadia University**  
Jan Moryka Sanders

**Arizona State University**  
None elected

**Austin Peay State University**  
Timothy F. Winters  
George Pesely ('11-'12)

**Bard College**  
None elected

**Barnard College**  
Nancy Worman

**Bethel College**  
Christopher Stackowicz

**Boston College**  
Gail Hoffman

**Boston University**  
James R. Wiseman ('10-'11)  
Curtis N. Runnels  
Mark Alonge

**Brevard College**  
Robert A. Bauslaugh

**Brigham Young University**  
None elected

**Brock University**  
Richard W. Parker  
Allison Glazebrook  
Robert Angus K. Smith

**Brooklyn College, CUNY**  
('11-'12)  
None elected

**Brown University**  
Adele C. Scafuro

**Bryn Mawr College**  
James C. Wright  
Camilla MacKay  
Alice Donohue

**Bucknell University**  
Kevin F. Daly  
Janet D. Jones  
Stephanie L. Larson

**Buffalo State College**  
Harriet Blitzer

**California State University, Fresno**  
David Berkey  
Honora Chapman

**California State University, Long Beach**  
Paul D. Scotton

**Carleton College**  
Nancy C. Wilkie

**Case Western Reserve University**  
Jenifer Neils  
Paul Iversen

**Chapman University ('12)**  
Justin St.P. Walsh ('12)

**City University of New York**  
Kim J. Hartswick

**Clark University**  
Rhys F. Townsend

**Colgate University**  
Albert Ammerman  
Rebecca Ammerman

**College of Charleston**  
James M.L. Newhard

**College of New Jersey**  
Lee Ann Riccardi

**College of the Holy Cross**  
Blaise Nagy  
Ellen E. Perry

**College of William and Mary**  
John H. Oakley  
William E. Hutton  
Barbette Spaeth

**College of Wooster ('11-'12)**  
Monica Florence ('12)  
Josephine Shaya ('12)

**Colorado College**  
Ruth Kolarik ('11-'12)  
Sanjaya Thakur ('11-'12)

**Columbia University**  
Richard Billows  
Marcus Folch  
Ioannis Mylonopoulos

**Concordia University (Montreal)**  
None elected ('10-'11)  
Jane Francis ('12)  
George W.M. Harrison ('12)

**Cornell University**  
Kevin Clinton ('10-'11)  
John E. Coleman ('10-'11)  
Sturt Manning ('12)

**Creighton University**  
Geoffrey W. Bakewell ('10-'11)  
None elected ('11-'12)

**Dartmouth College**  
Jeremy B. Rutter

**Davidson College**  
Peter M. Krentz  
Michael K. Toumazou

**Denison University**  
Timothy Paul Hofmeister ('11-'12)  
Garrett A. Jacobsen ('11-'12)  
Rebecca F. Kennedy ('11-'12)

**DePauw University**  
Rebecca Schindler

**Dickinson College, Central Pennsylvania Consortium**  
None elected

**Duke University**  
Sheila Dillon  
Carla M. Antonaccio

**Dumbarton Oaks Research Library**  
John Duffy

**Emory University**  
Sandra L. Blakely  
Niall W. Slater  
Bonna D. Wescoat

**Fairfield University**  
Katherine A. Schwab  
Marice Rose ('12)

**Florida State University**  
Daniel J. Pullen  
James P. Sickinger  
Christopher A. Pfaff

**Fordham University**  
Sarah Peirce

**Franklin and Marshall College, Central Pennsylvania Consortium**  
Ann R. Steiner

**George Mason University**  
Carol C. Mattusch

**George Washington University**  
None elected

**Georgetown University**  
Catherine M. Keesling

**Gettysburg College, Central Pennsylvania Consortium**  
Carolyn S. Snively

**Gonzaga University**  
Andrew L. Goldman

**Grand Valley State University**  
Melissa Morison  
William Morison

**Grinnell College**  
Gerald V. Lalonde ('10-'11)  
Dennis Hughes ('12)

**Gustavus Adolphus College**  
Mary McHugh

**Hamilton College**  
Barbara Kirk Gold

**Hampden-Sydney College, Randolph College/Sweet Briar/Hampden-Sydney College Consortium**  
Daniella Widdows or  
Janice Siegel

**Harvard University**  
Carmen Arnold-Biucchi

**Hollins University**  
Christina A. Salowey

**Hunter College**  
Robert Koehl

**Illinois State University**  
Georgia Tsouvala

**Indiana University**  
Margaretha Kramer-Hajos  
Sarah Bassett

**Indiana University – Purdue University at Indianapolis**  
Robert Sutton

**Institute for Advanced Study**  
Angelos Chaniotis ('11-'12)

**Institute of Fine Arts, NYU**  
James R. McCredie ('10-'11)  
Katherine Welch  
Clemente Marconi

**Iowa State University**  
Margaret S. Mook

**Johns Hopkins University**  
H. Alan Shapiro  
Dimitrios Yatromanolakis



**Kennesaw State University**  
Susan Kirkpatrick Smith  
Kristen Seaman

**Lake Forest College**  
C. Richard Fisher ('11-'12)

**Lawrence University**  
Carol L. Lawton

**Louisiana State University**  
None elected

**Loyola University in Maryland**  
Martha C. Taylor

**Loyola University of Chicago**  
Gregory W. Dobrov  
Laura C. Gawlinski  
Brian M. Lavelle

**McMaster University**  
Sean Corner  
Spencer Adams Pope

**Michigan State University**  
Carl Anderson  
Jon Frey

**Middlebury College**  
Jane D. Chaplin  
Pavlos Sfyroeras

**Millsaps College**  
Michael L. Galaty ('11-'12)  
Holly M. Sypniewski ('11-'12)

**Mount Holyoke College**  
Paula Debnar

**Nebraska Wesleyan University**  
Rick Cypert

**New York University**  
Joan B. Connelly

**Northwestern University**  
Robert W. Wallace

**Oberlin College**  
Kirk W. Ormand  
Andrew T. Wilburn ('11-'12)

**Ohio State University**  
Timothy E. Gregory  
Fritz Graf  
Mark Fullerton

**Ohio University**  
Ruth Palmer

**Ohio Wesleyan University**  
Donald Lateiner  
Lee M. Fratantuono

**Pembroke College**  
None elected

**Pennsylvania State University**  
Mark H. Munn  
Mary Lou Zimmerman Munn

**Pitzer College**  
Stephen L. Glass

**Pomona College**  
Richard D. McKirahan

**Princeton University**  
Christian Wildberg

**Providence College**  
Thomas F. Strasser  
Fred K. Drogula ('11-'12)

**Purdue University**  
Nicholas Rauh  
Charles Watkinson

**Radcliffe College**  
David G. Mitten

**Randolph College, Randolph College/Sweet Briar/Hampden-Sydney College Consortium**  
Amy R. Cohen

**Randolph-Macon College**  
Elizabeth Ann Fisher

**Rhodes College**  
Kenneth Morrell  
Geoffrey Bakewell ('12)

**Rice University**  
Carolyn K. Quenemoen ('10-'11)  
Harvey Yunis ('12)

**Rutgers, The State University**  
Thomas J. Figueira  
Sarolta A. Takács

**Savannah College of Art and Design**  
Patricia A. Butz  
Celeste Lovette Guichard  
Periklis Pagratis

**Scripps College**  
David Roselli

**Smith College**  
Thalia Pandiri

**Smithsonian Institution**  
Melinda Zeder ('11-'12))

**Southern Methodist University ('10-'11)**  
Karl Kilinski ('10)†

**Southwestern University**  
Halford W. Haskell

**Stanford University**  
Richard P. Martin

**State University of New York, Buffalo**  
Carolyn Higbie  
L. Vance Watrous

**Swarthmore College**  
Rosaria Vignolo Munson

**Sweet Briar College, Randolph College/Sweet Briar/Hampden-Sydney College Consortium**  
None elected

**Temple University**  
Philip Betancourt  
Daniel Tompkins

**Texas A & M University**  
Cemal M. Pulak  
Nancy Klein

**Texas Christian University**  
Richard L. Enos

**Texas Tech University**  
David Larmour

**Trinity College**  
Martha K. Risser

**Trinity University**  
Mark B. Garrison

**Tufts University**  
None elected

**Tulane University**  
Jane B. Carter

**Union College**  
Mark Toher

**University of Arizona**  
Mary Elis Voyatzis  
David G. Romano ('12)  
Eleni Hasaki ('12)

**University of Arkansas, Fulbright College**  
Daniel B. Levine

**University of British Columbia**  
Hector Williams

**University of California, Berkeley**  
Emily Mackil  
Kim Shelton

**University of California, Davis**  
Lynn E. Roller

**University of California, Irvine**  
Margaret M. Miles  
Maria Pantelia

**University of California, Los Angeles**  
Kathryn A. Morgan  
Sarah Purefoy Morris  
John K. Papadopoulos

**University of California, Santa Barbara**  
Borimir Jordan  
Brice L. Erickson  
John W.I. Lee

**University of Chicago**  
Jonathan M. Hall  
Richard Neer

**University of Cincinnati**  
Jack L. Davis  
Kathleen M. Lynch  
Eleni Hatzaki

**University of Colorado**  
Elspeth R.M. Dusinberre ('10-'11)

**University of Colorado, Boulder, in consortium with University of Illinois, Urbana-Champaign**  
Elspeth R.M. Dusinberre ('11-'12)

**University of Florida**  
Barbara A. Barletta  
Robert S. Wagman

**University of Georgia**  
Naomi J. Norman  
Nicholas C. Rynearson

**University of Illinois at Chicago**  
Jennifer L. Tobin

**University of Illinois, Urbana-Champaign, in consortium with University of Colorado, Boulder**  
William M. Calder ('11-'12)

**University of Illinois, Urbana-Champaign, in consortium with University of Iowa**  
William M. Calder ('10-'11)

**University of Iowa, in consortium with University of Illinois at Urbana-Champaign ('10-'11)**  
Mary J. DePew ('10-'11)  
Brenda J. Longfellow ('11)

**University of Iowa ('11-'12)**  
Mary J. DePew ('12)  
Brenda J. Longfellow ('12)

**University of Kansas**  
Michael Shaw  
John Younger

**University of Manitoba**  
Mark L. Lawall

**University of Mary Washington**  
Liane R. Houghtalin

**University of Maryland**  
Marjorie Venit

**University of Maryland, Baltimore County**  
Carolyn G. Koehler



**University of Massachusetts**  
Brian Breed

**University of Michigan**  
Sharon C. Herbert  
Christopher Ratté

**University of Minnesota**  
Frederick A. Cooper ('10-'11)++  
S. Douglas Olson

**University of Mississippi**  
None elected

**University of Missouri, Columbia**  
Kathleen W. Slane  
Ian Worthington

**University of Missouri, St. Louis**  
Michael B. Cosmopoulos

**University of Montreal**  
None elected

**University of Nebraska**  
Effie Athanassopoulos  
Michael Hoff

**University of North Carolina, Chapel Hill**  
Jodi Magness  
Kenneth Sams  
Mary C. Sturgeon

**University of North Carolina, Greensboro**  
Jeffrey S. Soles  
Joanne M.A. Murphy ('12)

**University of North Florida**  
Philip Kaplan

**University of Notre Dame**  
Robin F. Rhodes

**University of Oklahoma**  
Ellen Green  
Kyle Harper  
Samuel Huskey

**University of Oregon**  
Jeffrey M. Hurwit

**University of Pennsylvania**  
Jeremy J. McInerney  
Ralph Rosen  
Thomas Tartaron

**University of Pennsylvania Museum of Archaeology & Anthropology**  
Ann Blair Brownlee  
Barbara Hayden  
Jane Hickman ('12)  
David G. Romano ('10-'11)

**University of Pittsburgh**  
Harry C. Avery

**University of Rhode Island**  
Mary B. Hollinshead

**University of Richmond**  
Elizabeth Baughan  
Walter Stevenson  
Erika Zimmerman Damer ('11-'12)

**University of South Carolina**  
David Voros

**University of South Dakota**  
Clayton M. Lehmann

**University of South Florida**  
William M. Murray

**University of Southern California**  
None elected

**University of Southern Indiana**  
Michael Dixon

**University of Tennessee**  
Aleydis Van de Moortel

**University of Texas, Austin**  
Thomas G. Palaima  
Glenn A. Peers  
Paula J. Perlman

**University of Toronto**  
Ephraim Lytle  
Dimitri Nakassis

**University of Vermont**  
M.D. Usher

**University of Victoria**  
R. Brendan Burke

**University of Virginia**  
Jenny Strauss Clay  
Elizabeth Meyer  
Jon D. Mikalson

**University of Washington**  
James J. Clauss  
Kathryn Topper

**University of Waterloo, in consortium with Wilfrid Laurier University**  
Maria Liston

**University of Wisconsin, Madison**  
William Aylward

**Valparaiso University**  
Mark S. Farmer

**Vanderbilt University**  
Barbara Tsakiris  
Bronwen Wickkiser  
Betsey A. Robinson



**2010-11 Regular Members and a few friends inside the Temple of Aphaia on Aegina.**

**Vassar College**  
Barbara Olsen ('11-'12)

**Virginia Polytechnic Institute**  
Glenn R. Bugh

**Wabash College**  
Leslie P. Day  
Joseph Day ('10-'11)  
Jeremy Hartnett ('12)  
Matthew Sears ('12)

**Washington University, St. Louis**  
Robert D. Lamberton  
Susan I. Rotroff

**Wayne State University**  
Brian Madigan ('11-'12)

**Wellesley College**  
Bryan Burns

**Wesleyan University**  
None elected ('10-'11)  
Kathleen Birney ('12)  
Eirene Visvandi ('12)

**Westminster College**  
Robert A. Seelinger

**Wichita State University**  
Frederick Hemans

**Wilfrid Laurier University, in consortium with University of Waterloo**  
Gerald P. Schaus

**Willamette University**  
Ortwin Knorr  
Ann M. Nicgorski  
Scott H. Pike

**Williams College**  
Kerry A. Christensen  
Elizabeth P. McGowan

**Woods Hole Oceanographic Institution**  
None elected ('10-'11)  
Brendan P. Foley ('12)

**Wright State University**  
Jeanette Marchand

**Yale University**  
Milette Gaifman

+Deceased (d. 1/2011)  
++Deceased (d. 9/2011)

PLEASE NOTE: We make every effort to ensure that our information is correct. If we have made an omission or spelling error please contact us at [ascsa@ascsa.org](mailto:ascsa@ascsa.org).



## DONORS 2010-2012

**\$500,000 +**

European Economic Area  
Packard Humanities Institute  
Malcolm Hewitt Wiener  
Foundation  
Prof. Charles K. Williams, II

**\$100,000 - 499,999**

Arete Foundation  
Mr. Lloyd Cotsen and  
Mrs. Margit Sperling-Cotsen  
Dorothy Dinsmoor  
Fowler Merle-Smith Family  
Charitable Lead Trust  
Horace W. Goldsmith  
Foundation  
Samuel H. Kress Foundation  
The McCabe Family  
National Endowment for the  
Humanities  
Mr. and Mrs. James H. Ottaway, Jr.  
Randolph-Macon College  
U.S. Department of Education  
Mr. and Mrs. Alexander E.  
Zagoreos

**\$50,000 - 99,999**

Stathis Andris  
Council of American Overseas  
Research Centers (CAORC)  
The A.G. Leventis Foundation  
Mr. Hunter Lewis and  
Ms. Elizabeth Sidamon-Eristoff  
Mr. and Mrs. William T. Loomis  
Mr. and Mrs. Nassos Michas  
The Stavros S. Niarchos  
Foundation  
Mr. and Mrs. Petros Sabatacakis

**\$25,000 - 49,999**

Mr. and Mrs. Ted Athanassiades  
Dr. Nicholas G. Bacopoulos and  
Dr. Calypso Gounti  
The Behrakis Foundation  
Canellopoulos Foundation  
Mr. and Mrs. Henry P. Davis  
Inavale Foundation  
Joukowsky Family Foundation  
The Gladys Kriebel Delmas  
Foundation  
OPAP S.A.  
Philo tes Gennadeiou  
Nancy P. Weston

**\$15,000 - 24,999**

Betsy Z. and Edward E. Cohen  
Jack L. Davis and Sharon Stocker  
N. Demos Foundation, Inc.

Mrs. Julie Herzig Desnick and  
Dr. Robert Desnick  
Jessie Ball duPont Fund  
Mary and Michael Jaharis  
The Luther I. Replogle  
Foundation  
Ambassador and Mrs. Theodore  
Sedgwick  
Marilyn M. Simpson Charitable  
Trust  
Dr. and Mrs. Constantine T.  
Tsitsera  
Mr. and Mrs. Malcolm H. Wiener

**\$10,000 - 14,999**

American Research Institute in  
Turkey (ARIT)  
ASCSA Alumni Association  
Joan Bingham  
Andrew P. Bridges and  
Prof. Rebecca Lyman  
The Brown Foundation, Inc.  
Mr. and Mrs. George  
Counantaras  
Jessica and John Fullerton  
Mr. and Mrs. Barry Jacobson  
Anastasios Leventis  
Annette Merle-Smith  
Irene Moschallidis  
Rebecca Sinos  
Mr. and Mrs. Phaeton T.  
Tamvakakis

**\$5,000 - 9,999**

Alapis SA  
Elizabeth Angelicousis  
Prof. and Mrs. Alan L. Boegehold  
Patricia Neils Boulter  
Institute for Aegean Prehistory  
Mr. and Mrs. Thomas L. Kalaris  
Prof. Mary R. Lefkowitz  
Prof. Maria A. Liston  
Prof. and Mrs. James R.  
McCredie  
Mr. and Mrs. Andre Newburg  
Prof. and Mrs. Hunter R.  
Rawlings III  
Lady Judith and Sir John  
Thomson

**\$1,000 - 4,999**

Elie Abemayor  
Lisa Ackerman  
Prof. Rebecca Miller Ammerman  
Robert J. Appel  
Barry L. Atkinson  
Philip H. Auerbach  
Prof. Anna S. Benjamin  
Andrea M. Berlin

Mr. and Mrs. John H. Biggs  
Dr. Elizabeth C. Boggess  
Edwin L. Brown  
Prof. Jane Buikstra  
Plato Cacheris  
Mr. and Mrs. Thomas A. Cassilly  
Mary K. Dabney and James C.  
Wright  
Mr. and Mrs. Richard H. Davis  
Richard H. Davis, Jr.  
Deutsches Archäologisches  
Institut, Athens  
Dr. Ernestine S. Elster  
Elizabeth King Filiotis  
Prue Morgan Fitts  
Friedman Family Foundation  
Prof. Frank J. Frost  
Prof. Geraldine C. Gesell  
Prof. and Mrs. Costas Gogos  
Priscilla B. Grace  
The Greater Cincinnati  
Foundation  
Prof. Guy M. Hedreen and  
Prof. Elizabeth P. McGowan  
Ludmila Schwarzenberg Hess  
The Jordan-Evans Family  
Foundation  
Maria Karalis  
Prof. and Mrs. Edmund Keeley  
Eileen McIlvaine Koerner  
Gerald and Dorothea Lalonde  
Prof. Donald Lateiner  
John C. Lavezzi  
Leon Levy Foundation  
Mr. and Mrs. Herbert T. Lucas  
William T. Maccary, III  
Maliotis Charitable Foundation  
Prof. Miranda C. Marvin\*  
George S. Mavrogenes  
Lynne McClendon  
Prof. John C. McEnroe  
Dr. Mary Patterson McPherson  
Peter C. Meinig Revocable Trust  
Mr. and Mrs. J. K. Menoudakos  
Prof. Jon D. Mikalson  
Irene Miliou  
Hon. and Mrs. E. Leo Milonas  
Prof. Jenifer Neils  
Newman-Tanner Foundation  
Alexander S. Onassis Public  
Benefit Foundation (USA)  
Prof. John G. Pedley  
Prof. Karl M. Petruso  
Ambassador and Mrs. Alexander  
Philon  
Reverend Daniel E. Pilarczyk  
Chris Plum  
Robert L. Pounder  
Michael Psaros

Linda Collins Reilly  
Maureen Richards  
Prof. Susan I. Rotroff  
William Rue  
Matthew Ruttenberg  
Prof. Jeremy B. Rutter  
Prof. Mary Scranton and  
Mr. Roger Flood  
Prof. Thomas J. Sienkewicz  
Anthi Simotas  
Prof. Carolyn Snively  
Solow Art and Architecture  
Foundation  
Mr. and Mrs. William G. Spears  
Mr. and Mrs. Elias M.  
Stassinopoulos  
Elbridge and Evelyn Stuart  
Foundation  
Prof. Mary C. Sturgeon  
Profs. Robert and Susan Sutton  
Martha C. Taylor  
Profs. Stephen Tracy and  
June Allison  
Dr. and Mrs. Juergen Trumpf  
Dr. Elias Tsoukas  
Anastasia Tsunis  
Nantia Tzevelekiou-Papaioannou  
Prof. and Mrs. Kenneth T.  
Wright, Jr.

**\$500 - 999**

C.R. Bard Foundation  
Virginia M. Besl  
William and Jane Biers  
Robert D. Blegen  
Ann S. Bowers  
Amelia Brown  
Prof. R. Brendan Burke  
Prof. Mary R. Bynum and  
Mr. J. Philip Calabrese  
Prof. W. Robert Connor  
Mr. and Mrs. Theodore  
Demetriou  
Helen Dracopoulos-Mercatis  
Eric Foster  
Hallie Franks  
Prof. Elizabeth R. Gebhard and  
Dr. Matthew Dickie  
Ms. Davina Given  
Dan Grace  
Lydia H. Hadjipateras  
Cynthia M. Harrison  
Prof. David P. Hunt  
Dr. Henry R. Immerwahr  
Mr. and Mrs. Harold Isbell  
Ambassador and Mrs. Andrew  
Jacovides  
Mr. and Mrs. Keith D. Jewell  
Prof. Charles Kahn



Carolyn G. Koehler  
Margaret L. Laird  
Demetrios D. Lappas  
Profs. Carol L. Lawton and  
Jere Wickens  
Prof. Albert Leonard, Jr.  
The Arthur L. Loeb Foundation  
Prof. Kathleen M. Lynch  
Dimitri A. Manthos  
Dr. Richard S. Mason and  
Prof. Carol Mattusch  
John J. Medveckis  
Prof. Margaret M. Miles  
George S. B. Morgan  
Prof. Sarah Purefoy Morris and  
Prof. John K. Papadopoulos  
Margaret A. Mottier  
Helen F. North\*  
Hazel Palmer  
Mr. and Mrs. Joel Papernik  
Pepsico Foundation  
Prof. Dia M. L. Philippides  
Jerome Pollitt  
Dominic Popielski  
John S. Price  
Prof. Daniel J. Pullen  
Prof. David Gilman Romano and  
Dr. Irene B. Romano  
Louis A. Ruprecht, Jr.  
Marian Hill Sagan  
Prof. Christina A. Salowey  
Ann and Harry Santen  
Prof. Adele C. Scafuro  
Prof. Gerald P. Schaus  
Alex Schiller  
Dr. Katherine Schwab  
Drs. Robert and Joanna Seibert  
Kathleen Warner Slane  
Prof. Marie Spiro  
Mr. and Mrs. Charles Steinmetz  
Dr. Anna McCann Taggart  
Jennifer Tobin  
Prof. Mark Toher  
Dr. and Mrs. Sotirios J. Vahaviolos  
Prof. Peter van Minnen  
Dr. Catherine deG. Vanderpool  
and Dr. Theodore Politis  
Mr. and Mrs. Peter A. Vlachos  
Helen E. Wagner  
Prof. William C. West, III  
Prof. James R. Wiseman

#### \$499 AND UNDER

Helen Abadzi  
Karen B. Alexander  
Profs. Peter S. and Susan H. Allen  
Dr. Ann Hersey Allison  
Mark Alonge  
Jessica Amelar  
Peter Amram  
Sherry D. Anderson

Prof. Virginia Anderson-  
Stojanovic  
Amb. and Mrs. Achilleas  
Antoniades  
Mr. and Mrs. Tom Apostol  
Nolis S. Arkoulakis  
Charlotte P. Armstrong  
Mr. and Mrs. Richard Arnold  
Ede J. Ashworth  
Mr. and Mrs. Gerasimos  
Augustinos  
Mr. J. Keith Ausbrook  
Prof. Harry C. and JoAnn Avery  
Prof. and Mrs. Roger Bagnall  
Aaron Baker  
Timothy O. Baldwin  
Prof. Anastasius C. Bandy  
Dr. Elizabeth J. Barber  
Sandra Bartusis  
Sandra L. Batalden  
Lily Y. Beck  
Charles F. Begley  
Shirley Hersom Bennette  
Mr. Geoffrey C. Benson  
Prof. David L. Berkey  
Nancy S. Bernard  
Dr. and Mrs. Bruce H. Bielfelt  
Prof. Darice Birge  
Dr. Elizabeth Tucker Blackburn  
Lawrence J. Bliquez  
Christoph Boerker  
James F. Bogue  
Barbara Bohlen  
Suzanne Bonefas  
Elizabeth Bongie  
Dr. Nancy Bookidis  
Prof. Eugene N. Borza and  
Ms. Kathleen Pavelko  
Thomas Boyd  
Prof. Brendan Boyle  
Charles and Mary Brand  
Dr. Ann Brownlee and  
Dr. David Brownlee  
Robert J. and Helen V. Buck  
Prof. Glenn R. Bugh  
Katharine Butterworth  
Peter B. Caloyeras  
Carol Campbell  
Bill and Susan Caraher  
Edwin Carawan  
Jennifer E. Carinci  
Mr. and Mrs. Philip Cavanaugh  
Fred A. Cazel, Jr.  
Catia Z. Chapin  
Prof. John Cherry  
Judith A. Chester  
Mr. and Mrs. Chriss  
Prof. Matthew R. Christ  
Anne Wall Christeson  
Dr. Rozalia Christidou  
Margaret N. Clark  
Sarah Walton Clark

Prof. Diskin Clay  
Jenny Strauss Clay  
Dr. Jacquelyn Collins Clinton  
Wendy E. Closterman  
Prof. Ada Cohen  
Dr. Marianthe Colakis  
Judy Cole  
Prof. Susan Cole  
Amanda Jo Coles  
Mr. and Mrs. Robert J. Cooley  
Mme. Eustathia P. Costopoulos  
Stephanie P. Craven  
Tad Crawford  
Mary Jane Crotty  
Dr. Tracey Cullen  
Mrs. William C. Cullen  
Dr. Patricia Daily  
Jean M. Davison  
Christina F. and James A. Dengate  
Jonathan P. Desnick  
Jean H. DeWolfe  
Prof. Michael Dixon  
Prof. John J. Dobbins  
Catharine-Mary Donovan  
Mr. and Mrs. Emmanuel Dounias  
Mr. and Mrs. Robert Drews  
Dr. Dian Duryea  
Prof. Stephen L. Dyson  
Joanna P. Edstrom  
George Edwards, Jr.  
Sarah Gay Edwards  
Mary C. Eliot  
Prof. James A.S. Evans  
Lynne Eagles  
Prof. Gary Farney  
Jacqueline Fehrenbach  
Nancy Felson  
Prof. Anne Feltovich  
Mr. and Mrs. Hart Fessenden  
Susan J. Finke  
Prof. John E. Fischer  
Thomas Fitzpatrick  
Marjorie Anne Flory  
Mr. and Mrs. Michael O'S. Floyd  
Barbara Ann Forbes  
Robert L. Friedlander  
Laura M. Gadbery  
Tom Garvey  
Charles Gates  
Jon Geissmann  
Dr. Maria Georgopoulou  
Prof. Linda Maria Gigante  
Mr. and Mrs. John M. Gleason  
Mr. Michael and Mrs. Hilary  
Pitcairn Glenn  
Melissa Gold  
Dr. Eugenia Gorogianni  
Libby Graves  
James Gray  
Heather Grossman  
Dr. Janet B. Grossman  
Dr. Rosanne M. Gulino

Themis J. Hedges  
Greta Ham  
Karen J. Hammerlof  
Lydia Hankins  
Harry Haralambakis  
David Harpin  
Prof. Karelisa Hartigan  
Eleni Hasaki and Alan May  
Dr. and Mrs. George  
Hatsopoulos  
Barbara-Jean Helvie  
Sophia P. Henry  
James H. Hicks  
Nicolle E. Hirschfeld  
Theodore S. Hirtz  
Prof. Gail L. Hoffman  
Prof. Mary B. Hollinshead and  
Mr. William Hollinshead  
Margaret E. Horsnell  
Liane R. Houghtalin  
Prof. Rolf O. Hubbe  
George Huxley  
Jim T. Inscoc and Elmore B. Inscoc  
Prof. Paul A. Iversen  
Mr. and Mrs. Thomas P. Jedelev  
Rita J. Jeremy and J. Barry Gurdin  
Jotham Johnson  
James H. Joy  
Prof. Elias Kapetanopoulos  
Dr. Michael Kaplan and  
Dr. Maureen Kaplan  
Penelope Karageorge  
Susan Katzev  
Prof. Shigenari Kawashima  
Hilary T. Kenyon  
Gatewood Folger Kerr and  
Robert Kerr  
Hope T. Kerr  
Helen King  
Vicky Knoedler  
Prof. Dr. Helmut Koester  
George and Tina Kolovos  
Robert A. Koonce  
Dr. Theodora B. Kopestonsky  
Dr. Robert J. Kossmann  
Mr. and Mrs. Kenneth H. Kraft  
Kathleen Krattenmaker  
Prof. Peter Krentz  
John Kyriakides  
Constantina J. Lardas  
Kay Smith Larriue  
Mr. and Mrs. Richard J. Lauter  
Prof. and Mrs. Gilbert Lawall  
Prof. Eleanor Winsor Leach  
Edward Lee  
Prof. John W.I. Lee  
Ms. Minna M. Lee and  
Dr. James B. Summitt, Jr.  
Prof. Clayton M. Lehmann  
William J. Leitold  
Julia Lenaghan  
Dr. John R. Lenz



Daniel W. Leon  
 Prof. Daniel B. Levine  
 Dr. Richard F. Liebhart  
 John H. Light  
 The Lockhart Family  
 Alison D. Lonshein  
 Jerry O. Lorant  
 Paul J. Lountzis  
 Dr. Nicholas G. Loutsion  
 Claire L. Lyons  
 Prof. Ephraim Lytle  
 Dr. Georgia Ann Machemer  
 Maine Community Foundation  
 Martha Manheim  
 Dr. and Mrs. George Maragos  
 Christopher Marchetti  
 Ira S. Mark  
 Dr. Gilbert David Marshall  
 Paul L. Marsolini  
 Prof. Thomas R. Martin  
 Dr. Samantha Leah Martin-McAuliffe  
 Mr. and Mrs. Lazaros P. Mavrides  
 Dr. Marian H. McAllister  
 Dr. Anne McCabe  
 James H. McCrory  
 Mr. and Mrs. William H. McNeill  
 Sarah Mench  
 Dr. Catherine S. Mercer  
 Estate of Lucy Shoe Meritt  
 Mr. and Mrs. Irwin Merker  
 Sandy Mermelstein  
 Prof. Elizabeth Meyer  
 Nicholas Mihalios  
 Linda Miller  
 Dr. Michele A. Miller  
 George P. Mitchell  
 Dorothy Monahan  
 Prof. Kathryn A. Morgan  
 Kristen L. Morrison  
 Dr. Marcia Morrissey  
 Ethel M. Munn  
 Jerry Muntz  
 Adrian Muraru  
 Neiman Marcus Group  
 Dr. Joseph L. Nelson, Jr.  
 Judith Nelson  
 Col. Andonios Neroulia, USA (Ret)  
 Kevin and Cindy Nichols  
 Lucia Nixon  
 Dr. Anke L. Nolting  
 Prof. Naomi J. Norman  
 Jacob E. and Leona M. Nyenhuis  
 James Stephen O'Connor  
 Phyllis Odiseos  
 Dorinda J. Oliver  
 Prof. S. Douglas Olson  
 Dr. Andrei Opait  
 Eric Orlin  
 Kirk Ormand

Jane Hoeffel Otte and David Otte  
 Mr. and Mrs. Hugh D. Pallister, Jr.  
 Efsthios D. Papadimas  
 Lizabeth W. Papageorgiou  
 Prof. Amy Louise Papalexandrou  
 Richard W. Parker  
 David B. Parshall  
 Kimberley C. Patton  
 Dr. Leonard M. Paul  
 Dr. Thomas D. Paxson, Jr.  
 Dr. Martha J. Payne  
 Susan Goff Pearl  
 Prof. E. Pemberton and I. McPhee  
 Peter M. Perhonis and Faye Polillo  
 Pfizer Foundation  
 Dr. Michael Plakogiannis  
 Prof. Spencer Pope  
 Dr. Barbara A. Porter  
 Kristine Posch  
 Mr. Peter G. and Dr. Paula Nassen Poulos  
 Prof. Kurt A. Raaflaub  
 Roberta A. Rankin  
 Prof. George Rapp  
 Mr. and Mrs. William Remillong  
 Dr. Diane S. Rennell  
 Dr. and Mrs. Myron Resnick  
 Dr. Alice Swift Riginos  
 Betsey Robinson  
 Louise J. Robinson  
 Linda J. Roccas  
 George A. Rodetis  
 Mr. and Mrs. James A. Rogers  
 William D. Romaine  
 Chris Roosevelt  
 Oren Root  
 Joseph R. Ruff  
 Curtis Runnels  
 Prof. David W. Rupp  
 Dr. Peter M. Russo  
 Kelly Erin Ryan  
 L. Hugh Sackett  
 Susan C. Salay  
 Natalie Saltiel  
 Dr. Jan Motyka Sanders  
 Nanako Sawayanagi  
 Prof. Joseph B. Scholten  
 Joe Schott  
 Peter Schultz  
 Cynthia Schwenk  
 Mr. and Mrs. Richard Scribner  
 Dr. Nancy Serwint  
 Kim A. Severson  
 Prof. H. Alan Shapiro  
 Dr. Heather F. Sharpe  
 Prof. Joseph Shaw  
 Carole G. Shea  
 Ann C. Sheffield  
 Colin Shelton  
 Dorothy M. Shepard  
 Agnes Sherman  
 Corinne E. Shirley

Prof. Janice Siegel  
 Elizabeth Simpson  
 Pamela Sinkler-Todd  
 Ileana Sioris  
 Prof. Niall W. Slater  
 Sarah Dublin Slenczka  
 Dawn Smith-Popielski  
 Susan M. Smith  
 Prof. Jeffrey S. Soles  
 Mr. and Mrs. George T. Soterakis  
 Barbette Stanley Spaeth  
 Jennifer Lynne Stahl  
 Mr. and Mrs. George Stamatoyannopoulos  
 Barbara H. Stanton  
 Stavros Stavrides  
 Dr. and Mrs. Denny Stavros  
 Diana Stewart  
 Marilyn Stewart  
 Prof. Olin J. Storvick  
 Prof. Thomas F. Strasser  
 Christos Stratakis  
 Diane Arnson Svarlien  
 Prof. Andrew Szegedy-Maszak  
 Dr. Alice-Mary Maffry Talbot  
 Kim S. Tarka  
 Prof. Thomas F. Tartaron  
 T.P. Tassios  
 Ronald Tauber  
 Teagle Foundation  
 Prof. William G. Thalmann  
 Megan L. Thomsen  
 Dr. Richard A. Todd  
 Joan Tomaszewski  
 Prof. Daniel Tompkins  
 Prof. Michael K. Toumazou  
 Prof. Barbara Tsakirgis  
 Prof. Georgia Tsouvala and Prof. Lee Brice  
 Lucy C. Turnbull  
 LT COL Michael C Turoff  
 USAF (Ret)  
 Mr. Peter W. Van Der Nailen  
 Dr. Frances Van Keuren  
 Orestes G. Varvitsiotes  
 Dr. and Mrs. Anthony Vasilas  
 Dora Vassilicou  
 Prof. Peter Vernezze  
 Christina McGuire Villarreal  
 K. D. Vitelli  
 Zoe Vlachos  
 Natalia Vogekoff-Brogan  
 Margaret A. Waggoner  
 Dr. Michael B. Walbank  
 Jeremy M. Walker  
 Irene Wanner  
 Prof. Allen M. Ward, Jr.  
 Jean S. Wellington  
 James M. Wells  
 Christopher S. Werner  
 Emily Blanchard West  
 Susan Hensley Wester

## EDWARD CAPPS SOCIETY

### Honorary Co-Chairs

Alan L. Boegehold  
 Ronald S. Stroud

### Members

Theodore Athanassiades  
 Sandra J. Bartusis  
 Martha W. Baldwin Bowsky  
 Mr. and Mrs. Edward E. Cohen  
 Mr. and Mrs. Jonathan Z. Cohen  
 Lloyd E. Cotsen  
 Henry P. Davis  
 Elizabeth R. Gebhard  
 Geraldine C. Gesell  
 Karelisa V. Hartigan  
 Caroline M. Houser  
 Katherine Keene  
 Carol Lawton & Jere Wickens  
 Hunter Lewis  
 William T. Loomis  
 Lana J. Mandilas  
 The McCabe Family  
 James R. McCredie  
 Annette Merle-Smith  
 Nossos Michas  
 Jon D. Mikalson  
 George S. B. Morgan  
 James Ottaway, Jr.  
 David W. Packard  
 Petros K. Sabatacakis  
 Margaret Samourkas  
 Alexandra Shear  
 Julia Louise Shear  
 T. Leslie Shear  
 William Kelly Simpson  
 Carolyn S. Snively  
 Nicholas J. Theocarakis  
 Malcolm H. Wiener  
 Charles K. Williams, II  
 John Younger  
 Alexander E. Zagoreos

Wendy P. White  
 Martha Heath Wiencke  
 Prof. Nancy C. Wilkie  
 Emily Marie Spence Williams  
 Emily Howe Wilson  
 George E. Wishon  
 Dr. Birgitta Wohl  
 Jeffrey S. Wood  
 Themis Xatzgianni  
 Mr. and Mrs. Spyros Xenakis  
 Elizabeth T. Yarnall  
 Paschalina Ziamou



## HONORARY GIFTS

In Honor of the Class of 1973–74  
Carolyn G. Koehler

In Honor of the Class of 1983–84  
Prof. Liane R. Houghtalin

In Honor of the Class of 1986–87  
Anonymous  
Aaron Baker  
Andrea M. Berlin  
Suzanne Bonefas  
Nicolle E. Hirschfeld  
Prof. Gail L. Hoffman  
Kathleen Krattenmaker  
Eric Orlin  
Barbette Stanley Spaeth  
Jennifer Tobin

In Honor of the Class of 1992–93  
Greta Ham

In Honor of the Summer Class of 2009  
Jennifer E. Carinci

In Honor of Ambassador Gianna Angelopoulos-Daskalaki  
Dr. Robert Desnick and Mrs. Julie Herzig Desnick

In Honor of the ASCSA Staff  
Nancy Felson

In Honor of Fr. Edward W. Bodnar, SJ  
Gatewood Folger Kerr and Robert Kerr

In Honor of John McK. Camp II  
Prof. Robert L. Pounder

In Honor of Jenny Strauss Clay  
Eric Foster

In Honor of Jack Davis  
Anonymous

In Honor of Jack Davis and Sharon Stocker  
Curtis Runnels  
Ann and Harry Santen  
Prof. Kathleen Lynch

In Honor of Jack Davis, Mary Sturgeon, Irene Romano, and the US/Greece-based staffs of the School  
Andrew P. Bridges and Prof. Rebecca Lyman

In Honor of our dear friends and colleagues Jack Davis at the end of his Directorship of our beloved School in Athens and James Wright as he starts his  
Robert F. and Susan Buck Sutton

In Honor of Jack L. Davis  
Harry and Ann Santen Fund of the Greater Cincinnati Foundation

In Honor of Liz Mitsou Gignoli  
Wendy P. White

In Honor of Robert and Dina McCabe  
Prof. Andrew Szegedy-Maszak

In Honor of John Papadopoulos and Sarah Purefoy Morris  
Mr. and Mrs. Charles Steinmetz

In Honor of Hunter Rawlings  
Robert J. Appel  
Ann S. Bowers  
Friedman Family Foundation  
The Peter C. Meinig Revocable Trust  
Newman-Tanner Foundation

In Honor of Cynthia Shelmerdine  
Kirk Ormand

In Honor of F. Michael Wester  
Susan Hensley Wester

In Honor of Alexander E. Zagoreos  
Mr. and Mrs. Richard Scribner

In Honor of Alexander Zagoreos and Emeline Theophania de Bure  
Kristine Posch

## MEMORIAL GIFTS

In Memory of L.T. Brown  
Jenny Strauss Clay

In Memory of Maureen Cavanaugh  
Chris Plum

In Memory of Frederick Cooper  
Prof. Alan L. Boegehold  
Julie Boegehold  
Libby Graves  
Prof. Clayton M. Lehmann  
Jacob E. and Leona M. Nyenhuis  
Prof. John G. Pedley  
K. D. Vitelli

In Memory of Charles Malcolm Edwards  
Sarah Gay Edwards

In Memory of C.W.J. Eliot  
Prof. and Mrs. Kenneth T. Wright, Jr.

In Memory of Charles Fleischmann  
Mr. and Mrs. Harry Santen

In Memory of Virginia Grace  
Dan Grace

In Memory of Maria Bura Hasaki  
Eleni Hasaki and Alan May

In Memory of Herbert M. Howe  
Emily Howe Wilson

In Memory of Mike Jameson  
Martha C. Taylor

In Memory of Jotham Johnson (1905-1967)  
Jotham Johnson

In Memory of Mabel Lang  
Patricia N. Boulter  
Libby Graves  
Prof. Jenifer Neils

In Memory of Philip Lockhart  
Ms. Barbara-Jean Helvie  
Mr. John H. Light  
The Lockhart Family  
Dr. Leonard M. Paul  
Mr. and Mrs. Joseph Ruff  
Christopher S. Werner  
Mr. and Mrs. Jeffrey S. Wood  
Elizabeth T. Yarnall

In Memory of Nancy Ashby Mavrogenes  
Margaret A. Mottier

In Memory of Helen F. North  
Prof. H. Alan Shapiro

In Memory of Mrs. Maria Zelia Phillippides  
Nancy P. Weston

In Memory of Antony and Isabelle Raubitschek  
Mr. Andrew P. Bridges and Prof. Rebecca Lyman

In Memory of Robert and Louise Scranton and Edward Capps  
Prof. Mary Scranton and Mr. Roger Flood

In Memory of Doreen Canaday Spitzer  
Mr. and Mrs. Richard Arnold  
Nancy S. Bernard  
Dr. Ernestine S. Elster  
Lydia Hankins  
Prof. Mary B. Hollinshead and Mr. William Hollinshead  
Prof. George L. Huxley  
Claire L. Lyons  
Dr. Richard Mason  
Dr. Marian H. McAllister  
Lucia Nixon  
Prof. John G. Pedley  
Mr. and Mrs. William Remillong  
Maureen Richards  
Prof. David Gilman Romano and Dr. Irene B. Romano  
Carole G. Shea  
Dorothy M. Shepard  
Dr. Anna McCann Taggart  
Helen E. Wagner

In Memory of my Parents: Homer and Dorothy Thompson  
Hilary T. Kenyon

In Memory of F. Michael Wester  
Susan H. Wester

\*Deceased





KPMG LLP  
Suite 200  
1305 Walt Whitman Road  
Melville, NY 11747-4302

### Independent Auditors' Report

The Board of Trustees  
American School of Classical Studies  
at Athens:

We have audited the accompanying statement of financial position of American School of Classical Studies at Athens (the School) as of June 30, 2012, and the related statements of activities and cash flows for the year then ended. These financial statements are the responsibility of the School's management. Our responsibility is to express an opinion on these financial statements based on our audit. The prior year summarized comparative information has been derived from the School's 2011 financial statements and, in our report dated December 21, 2011, we expressed an unqualified opinion on those financial statements.

We conducted our audit in accordance with auditing standards generally accepted in the United States of America. Those standards require that we plan and perform the audit to obtain reasonable assurance about whether the financial statements are free of material misstatement. An audit includes consideration of internal control over financial reporting as a basis for designing audit procedures that are appropriate in the circumstances, but not for the purpose of expressing an opinion on the effectiveness of the School's internal control over financial reporting. Accordingly, we express no such opinion. An audit also includes examining, on a test basis, evidence supporting the amounts and disclosures in the financial statements, assessing the accounting principles used and significant estimates made by management, as well as evaluating the overall financial statement presentation. We believe that our audit provides a reasonable basis for our opinion.

In our opinion, the financial statements referred to above present fairly, in all material respects, the financial position of American School of Classical Studies at Athens as of June 30, 2012, and the changes in its net assets and its cash flows for the year then ended in conformity with U.S. generally accepted accounting principles.

**KPMG LLP**

November 9, 2012



STATEMENT OF FINANCIAL POSITION  
YEARS ENDING JUNE 30, 2011 AND JUNE 30, 2012

ASSETS	2011	2012
Cash and Cash Equivalents	1,298,769	861,569
Accounts Receivable	1,104,345	1,278,689
Accrued Investment Income	499,957	421,865
Prepaid Expenses	90,766	128,906
Investments (at Market)	158,848,651	144,217,785
Plant Assets, net of accumulated depreciation	5,947,107	5,644,273
<b>TOTAL ASSETS</b>	<b><u>\$167,789,595</u></b>	<b><u>\$152,553,087</u></b>
<b>LIABILITIES &amp; NET ASSETS</b>		
Liabilities:		
Accounts Payable and Accrued Expenses	612,225	595,334
Deferred Revenues	166,278	155,555
<b>TOTAL LIABILITIES</b>	<b><u>\$778,503</u></b>	<b><u>\$750,889</u></b>
Net Assets:		
Unrestricted		
Operating	69,656,626	61,687,893
Designated for future capital projects	585,317	675,317
Investment in plant assets	5,947,107	5,644,273
<b>TOTAL UNRESTRICTED ASSETS</b>	<b><u>\$76,189,050</u></b>	<b><u>\$68,007,483</u></b>
Temporarily Restricted	67,758,329	60,340,534
Permanently Restricted	23,063,713	23,454,181
<b>TOTAL NET ASSETS</b>	<b><u>\$167,011,092</u></b>	<b><u>\$151,802,198</u></b>
<b>TOTAL LIABILITIES &amp; NET ASSETS</b>	<b><u>\$167,789,595</u></b>	<b><u>\$152,553,087</u></b>

STATEMENT OF ACTIVITIES  
YEARS ENDING JUNE 30, 2011 AND JUNE 30, 2012

REVENUES & GAINS	2011	2012
Student Tuition & Fees	571,788	522,151
Federal Awards	280,214	255,794
Contributions	3,224,766	2,906,058
Investment return authorized for use in operations	6,646,199	6,621,500
Other Revenues (Losses)	812,447	364,336
	<hr/>	<hr/>
<b>TOTAL REVENUES &amp; GAINS</b>	<b><u>\$11,535,414</u></b>	<b><u>\$10,669,839</u></b>
 EXPENSES		
Instruction	1,680,387	1,653,960
Publications	840,179	850,377
Libraries	2,662,961	2,549,276
Excavations & Research	3,489,876	4,179,225
General Administration	2,337,086	2,153,610
	<hr/>	<hr/>
<b>TOTAL EXPENSES</b>	<b><u>\$11,010,489</u></b>	<b><u>\$11,386,448</u></b>
 INCREASE (DECREASE) IN NET ASSETS, FROM OPERATING ACTIVITIES	 524,925	 (716,609)
	<hr/>	<hr/>
NET ASSETS AS OF BEGINNING OF YEAR	142,902,939	167,011,092
	<hr/>	<hr/>
<b>NET ASSETS AS OF END OF YEAR</b>	<b><u>\$167,011,092</u></b>	<b><u>\$151,802,198</u></b>





## VISION

The American School of Classical Studies at Athens strives to maintain and enhance its position as the preeminent center for the study of the Greek world from antiquity to the present day.

## MISSION

The American School of Classical Studies at Athens (ASCSA) advances knowledge of Greece in all periods, as well as other areas of the classical world, by training young scholars, sponsoring and promoting archaeological fieldwork, providing resources for scholarly work, and disseminating research. The ASCSA is also charged by the Hellenic Ministry of Culture and Tourism with primary responsibility for all American archaeological research, and seeks to support the investigation, preservation, and presentation of Greece's cultural heritage.

## PHILOSOPHY

The study of Greece from antiquity to the present day is critical for understanding the civilizations, history and culture of the Mediterranean, Europe, and Western Asia. The ASCSA supports a multidisciplinary approach to Hellenic studies, encompassing the fields of archaeology, anthropology, the archaeological sciences, topography, architecture, epigraphy, numismatics, history, art, language, literature, philosophy, religion, and cultural studies. As an institution in Greece sponsored by a consortium of institutions of higher education in North America, the ASCSA makes its resources available to qualified scholars, promotes the highest standards of research and archaeological fieldwork, and shares the results of its work.

**Back cover: American School of Classical Studies at the Kolonaki campus.**

**The ASCSA would like to thank all those who have contributed photography to this annual report.**





## THE AMERICAN SCHOOL OF CLASSICAL STUDIES AT ATHENS

54 Souidias Street, GR-106 76 Athens, Greece Telephone: +30-213-000-2400 Fax: +30-210-725-0584  
6-8 Charlton Street, Princeton, NJ 08540-5232 Telephone: 609-683-0800 Fax: 609-924-0578 [www.ascsa.edu.gr](http://www.ascsa.edu.gr)